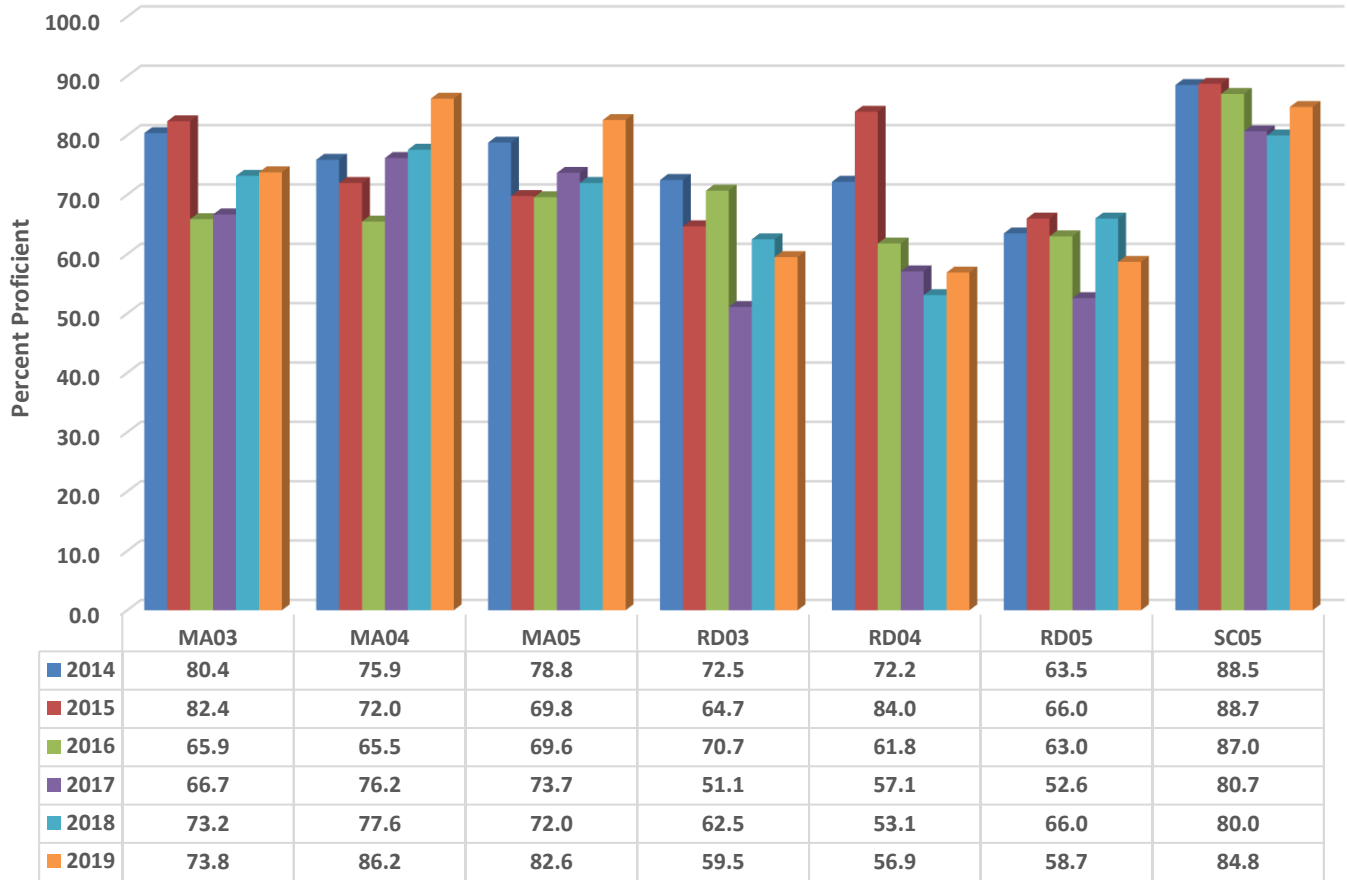


### Trindale Elementary Six Year Comparison Using GLP



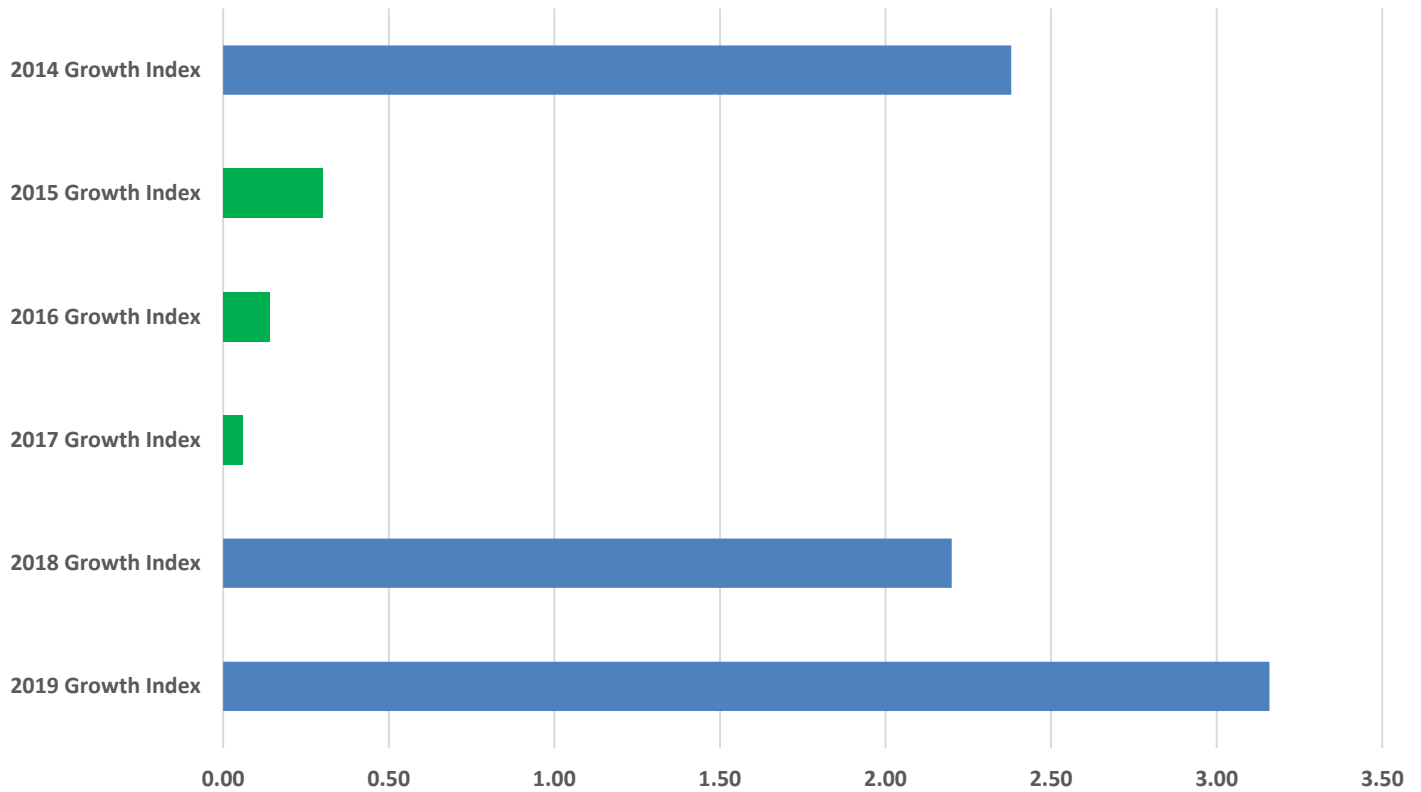
### READY Accountability Model

	CCR Denominator	CCR Percent	GLP Denominator	GLP Percent
2014	366	69.4	366	76.0
2015	361	66.5	361	75.3
2016	330	61.5	330	68.8
2017	345	55.1	345	65.8
2018	360	60.6	360	69.2
2019	338	55.6	338	71.9

### Growth and Participation Targets

	Growth Status	Total Targets	Targets Met	Percent Met
2014	Exceeded Expected Growth	17	17	100.0
2015	Met Expected Growth	17	17	100.0
2016	Met Expected Growth	8	8	100.0
2017	Met Expected Growth	9	9	100.0
2018	Exceeded Expected Growth	8	8	100.0
2019	Exceeded Expected Growth	8	8	100.0

### Trindale Elementary Six Year Growth Index



	2019 Growth Index	2018 Growth Index	2017 Growth Index	2016 Growth Index	2015 Growth Index	2014 Growth Index
■ Trindale	3.16	2.20	0.06	0.14	0.30	2.38

### Growth Index

	School Accountability Type	Index	Level
<b>2014</b>	Math, Reading, and Science	2.38	Exceeded Expected Growth
<b>2015</b>	Math, Reading, and Science	0.3	Met Expected Growth
<b>2016</b>	Math, Reading, and Science	0.14	Met Expected Growth
<b>2017</b>	Math, Reading, and Science	0.06	Met Expected Growth
<b>2018</b>	Math, Reading, and Science	2.20	Exceeded Expected Growth
<b>2019</b>	Math, Reading, and Science	3.16	Exceeded Expected Growth