

The district, school and site information and personal data is for INTERNAL USE ONLY and must be kept confidential. External use must be limited to sharing district data with that respective district only.



How to use this report

This report provides enrollment, action plan and assessment data for schools in the selected district, for the selected program and assessment. The data can be used to understand trends in work completed, identify current areas of focus, and suggests areas of opportunity for future policy and practice change efforts.

Data as of
Oct 27, 2020

District

This report is prepared exclusively for the following district:

▼ Christian Co Public Sch Dist ▼

Action Plans

The Action Plan is a tool to help schools manage tasks related to school health initiatives. Each school has one Action Plan, which can include items from both the Healthy Schools Program and RISE.

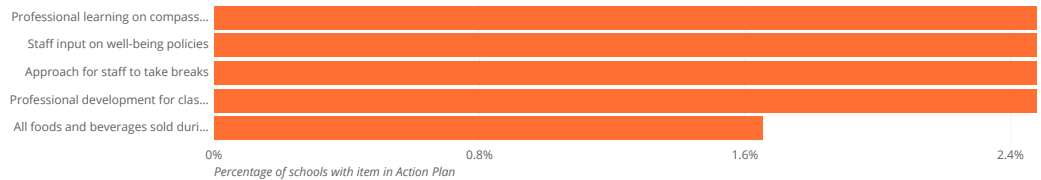
Total items in schools' Action Plans

121 items

Total items marked complete

8 items

Most commonly selected items on enrolled schools' Action Plans



Program

▼ Healthy Schools Program ▼

The following charts show data specific to the childhood health program you have selected.

This pie chart and table show the counts and percentages of schools in your district that are enrolled in this program. The support types are defined as:

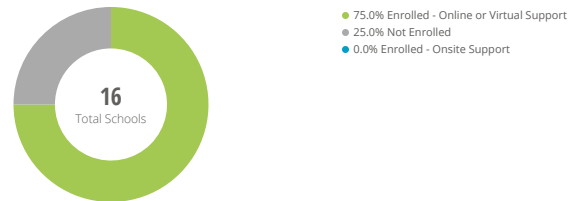
Onsite Support

A Healthier Generation Program Manager for the program selected above meets with school staff in-person, conducting workshops and supporting the school's involvement in Healthier Generation programs.

Online or Virtual Support

Healthier Generation supports the school's involvement in programs virtually, using either a Virtual Program Manager or the Member Engagement and Support Team as well as webinars, email, phone, on-demand learning and other digital tools.

School enrollment in your district by support type



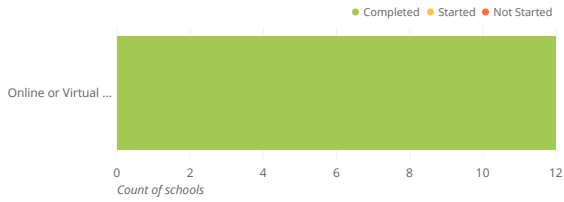
| Enrollment Type | Number of Schools | Percentage of schools |
|--------------------------------------|-------------------|-----------------------|
| Enrolled - Online or Virtual Support | 12 | 75% |
| Enrolled - Onsite Support | 0 | 0% |
| Not Enrolled | 4 | 25% |
| Total | 16 | 100% |

Assessment

Healthy Schools Assessment

The following charts show data specific to the childhood health program assessment you have selected.

Assessment completion by support type



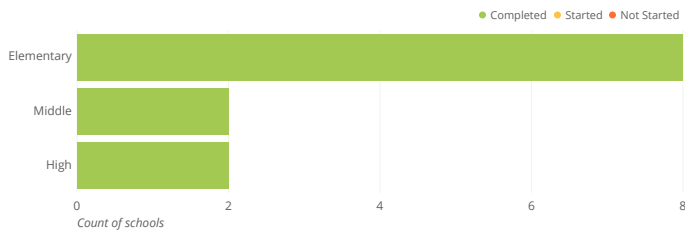
Assessment completion by support type

| Type | Completed | % Complete | Started | % Started | Not Started | % Not Started | Total |
|---------------------------|-----------|------------|---------|-----------|-------------|---------------|-------|
| All enrolled schools | 12 | 100% | 0 | 0% | 0 | 0% | 12 |
| Online or Virtual Support | 12 | 100% | 0 | 0% | 0 | 0% | 12 |

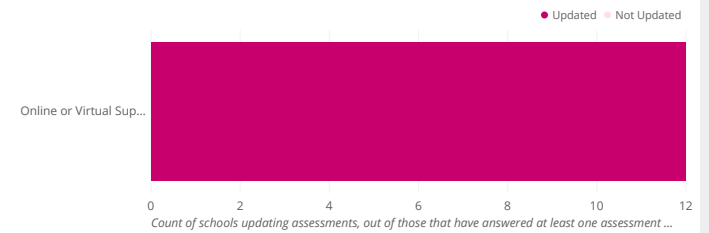
View all 2 rows and 8 columns

The Assessment completion by support type charts show how many schools in your district have completed (answered all questions at least once), started (answered at least one question, but not all of them) and not started this assessment.

Assessment completion among all enrolled schools, by grade level



Assessments updated by enrolled schools within the last 12 months, by support type



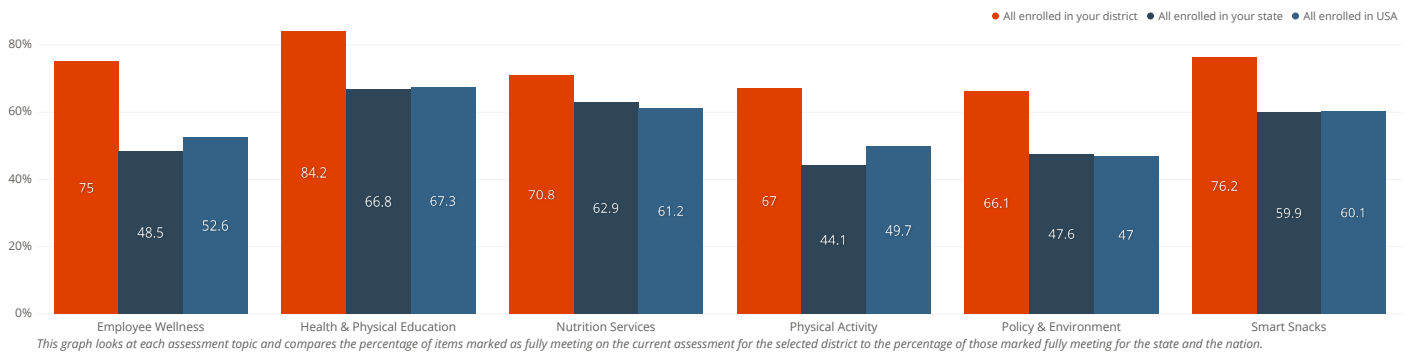
| Type | Completed | % Complete | Started | % Started | Not Started | % Not Started | Total |
|----------------------|-----------|------------|---------|-----------|-------------|---------------|-------|
| All enrolled schools | 12 | 100% | 0 | 0% | 0 | 0% | 12 |
| Elementary | 8 | 100% | 0 | 0% | 0 | 0% | 8 |
| Middle | 2 | 100% | 0 | 0% | 0 | 0% | 2 |
| High | 2 | 100% | 0 | 0% | 0 | 0% | 2 |

View all 4 rows and 8 columns

| Type | Updated | % Updated | Not Updated | % Not Updated |
|---------------------------|---------|-----------|-------------|---------------|
| All enrolled schools | 12 | 100% | 0 | 0% |
| Online or Virtual Support | 12 | 100% | 0 | 0% |

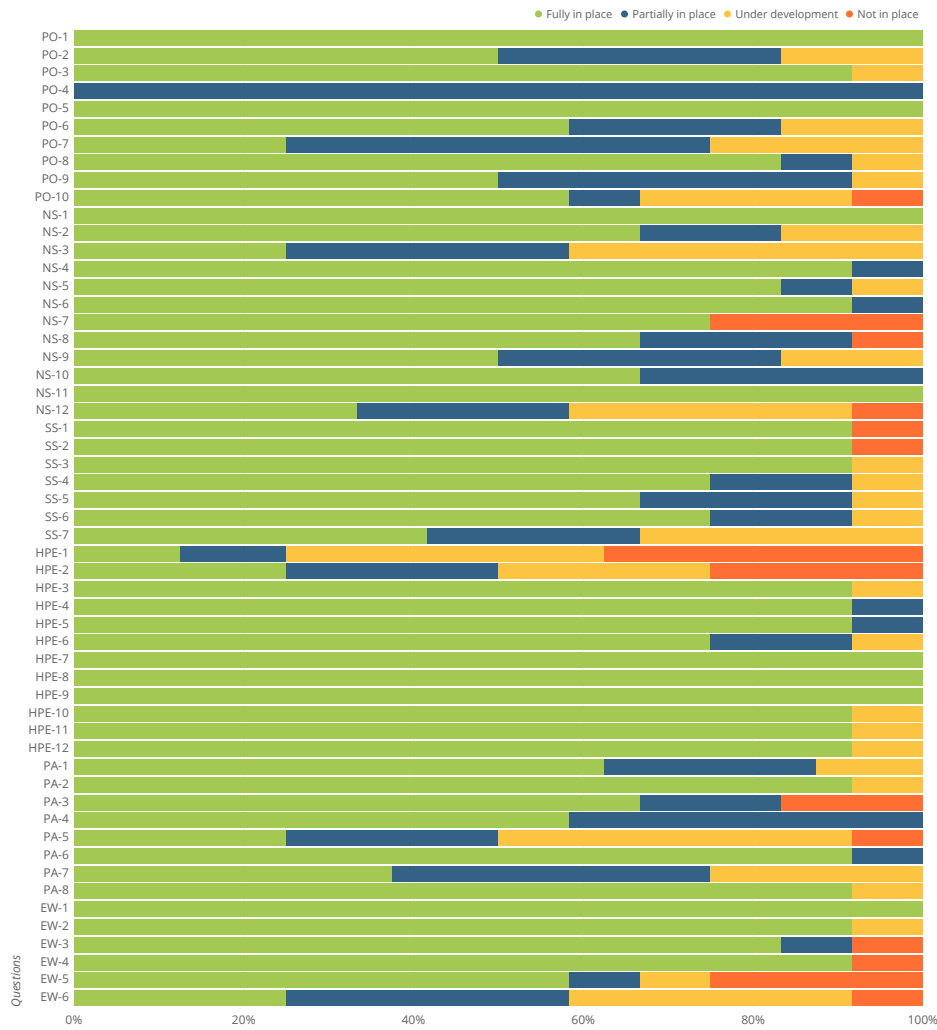
*Note: Other schools include K-8, K-12, and other schools not considered Elementary, Middle, or High

Percentage of items fully meeting best practices on the current assessment compared to state & national data

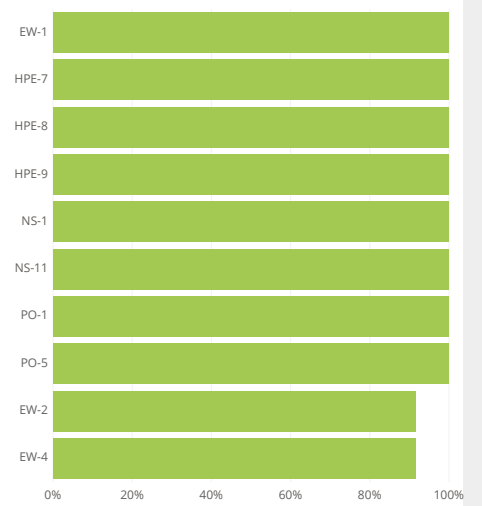


Note: The state and national benchmarks above include data from your district.

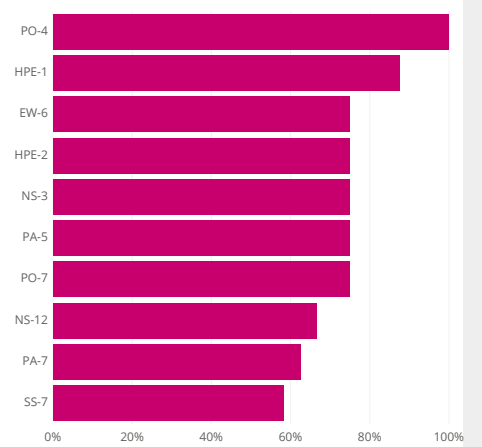
Assessment responses for schools in your district, listed by topic



Assessment responses with the highest percentage fully meeting



Assessment responses with the highest percentage not fully meeting

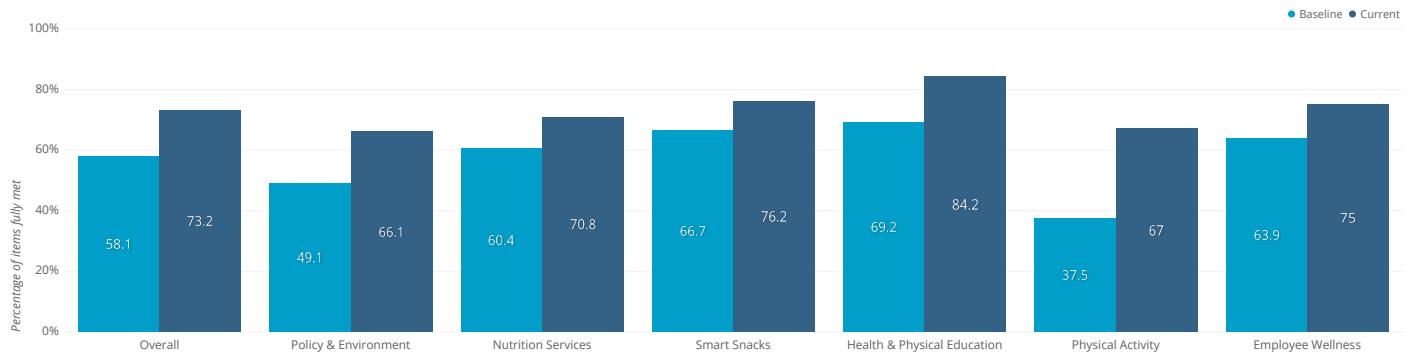


Assessment responses for schools in your district, listed by question

| Criteria | Fully in place:# | Not in place:# | Partially in place:# | Under development:# | Fully in place:% | Not in place:% | Partially in place:% | Under development:% | Question Description |
|----------|------------------|----------------|----------------------|---------------------|------------------|----------------|----------------------|---------------------|--|
| PO-1 | 12 | | | | 100 | | | | Representative school health committee or team |
| PO-2 | 6 | | 4 | 2 | 50 | | 33 | 17 | Written school health and safety policies |
| PO-3 | 11 | | | 1 | 92 | | | 8 | Local school wellness policy |
| PO-4 | | | 4 | | | | 100 | | School start times |
| PO-5 | 12 | | | | 100 | | | | Health services provided by a full-time school nurse |
| PO-6 | 7 | | 3 | 2 | 58 | | 25 | 17 | Counseling, psychological, and social services provided by a full-time counselor, social worker, and psychologist |
| PO-7 | 3 | | 6 | 3 | 25 | | 50 | 25 | Parenting strategies |
| PO-8 | 10 | | 1 | 1 | 83 | | 8 | 8 | Family engagement in school decision making |
| PO-9 | 6 | | 5 | 1 | 50 | | 42 | 8 | Community involvement in school health initiatives |
| PO-10 | 7 | 1 | 1 | 3 | 58 | 8 | 8 | 25 | Out-of-school programs |
| NS-1 | 12 | | | | 100 | | | | Breakfast and lunch programs |
| NS-2 | 8 | | 2 | 2 | 67 | | 17 | 17 | School breakfast |
| NS-3 | 3 | | 4 | 5 | 25 | | 33 | 42 | School lunch |
| NS-4 | 11 | | 1 | | 92 | | 8 | | Variety of offerings in school meals |
| NS-5 | 10 | | 1 | 1 | 83 | | 8 | 8 | Promote healthy food and beverage choices and school meals using marketing and merchandising techniques. |
| NS-6 | 11 | | 1 | | 92 | | 8 | | Annual continuing education and training requirements for school nutrition services staff |
| NS-7 | 9 | 3 | | | 75 | 25 | | | Venues outside the cafeteria offer fruits and vegetables |
| NS-8 | 8 | 1 | 3 | | 67 | 8 | 25 | | Collaboration between school nutrition services staff members and teachers |
| NS-9 | 6 | | 4 | 2 | 50 | | 33 | 17 | Student and family involvement in the school meal programs and other foods and beverages sold, served and offered on school campus. |
| NS-10 | 8 | | 4 | | 67 | | 33 | | Prohibit using food as reward or punishment |
| NS-11 | 12 | | | | 100 | | | | Adequate time to eat school meals |
| NS-12 | 4 | 1 | 3 | 4 | 33 | 8 | 25 | 33 | Farm to School activities |
| SS-1 | 11 | 1 | | | 92 | 8 | | | All foods sold during the school day meet the USDA's Smart Snacks in School nutrition standards |
| SS-2 | 11 | 1 | | | 92 | 8 | | | All beverages sold during the school day meet the USDA's Smart Snacks in School nutrition standards |
| SS-3 | 11 | | | 1 | 92 | | | 8 | Food and beverage marketing |
| SS-4 | 9 | | 2 | 1 | 75 | | 17 | 8 | All foods and beverages served and offered during the school day meet the USDA's Smart Snacks in School nutrition standards |
| SS-5 | 8 | | 3 | 1 | 67 | | 25 | 8 | All foods and beverages sold during the extended school day meet the USDA's Smart Snacks in School nutrition standards |
| SS-6 | 9 | | 2 | 1 | 75 | | 17 | 8 | All foods and beverages served and offered during the extended school day meet the USDA's Smart Snacks in School nutrition standards |
| SS-7 | 5 | | 3 | 4 | 42 | | 25 | 33 | Fundraising efforts during and outside school hours meet the USDA's Smart Snacks in School nutrition standards |
| HPE-1 | 1 | 3 | 1 | 3 | 13 | 38 | 13 | 38 | Minutes of physical education per week |
| HPE-2 | 1 | 1 | 1 | 1 | 25 | 25 | 25 | 25 | Years of physical education |
| HPE-3 | 11 | | | 1 | 92 | | | 8 | Sequential physical education curriculum consistent with standards |
| HPE-4 | 11 | | 1 | | 92 | | 8 | | Students active at least 50% of class time |
| HPE-5 | 11 | | 1 | | 92 | | 8 | | Professional development for physical education teachers |
| HPE-6 | 9 | | 2 | 1 | 75 | | 17 | 8 | Information and materials for physical education teachers |
| HPE-7 | 12 | | | | 100 | | | | Licensed physical education teachers |
| HPE-8 | 8 | | | | 100 | | | | Health education taught in all grades |
| HPE-9 | 4 | | | | 100 | | | | Required health education course |
| HPE-10 | 11 | | | 1 | 92 | | | 8 | Essential topics on physical activity |
| HPE-11 | 11 | | | 1 | 92 | | | 8 | Essential topics on healthy eating |
| HPE-12 | 11 | | | 1 | 92 | | | 8 | Opportunities to practice skills |
| PA-1 | 5 | | 2 | 1 | 63 | | 25 | 13 | Recess |
| PA-2 | 11 | | | 1 | 92 | | | 8 | Availability of physical activity breaks in classrooms |
| PA-3 | 8 | 2 | 2 | | 67 | 17 | 17 | | Promotion or support of walking and bicycling to and/or from school |

View all 55 rows and 10 columns

Percentage of items fully met on the baseline assessment compared to the current assessment



This graph compares the total number of assessment items fully implemented on the earliest Healthier Generation Healthy Schools Program Assessment, for each topic of the assessment, to the total number of assessment items that could be fully implemented for all schools. The graph also includes this information for the most recent update of the assessment.

Current assessment responses by schools in your district

| School Name | City | State | Postal Code | Low Grade | High Grade | Assessment Start Date | Assessment Baseline Date | Assessment Update Date | Action Plan Start Date | Action Plan Upd... |
|--------------------------------|--------------|-------|-------------|-----------|------------|-----------------------|--------------------------|------------------------|------------------------|--------------------|
| Christian Co High School | Hopkinsville | KY | 42240-2499 | 9 | 12 | Oct 19, 2018 | Oct 1, 2020 | Oct 1, 2020 | Oct 22, 2020 | Oct 22, 2020 |
| Christian Co Middle School | Hopkinsville | KY | 42240-2400 | 7 | 8 | Feb 18, 2019 | Oct 1, 2020 | Oct 1, 2020 | | |
| Crofton Elementary School | Crofton | KY | 42217-8169 | K | 6 | Oct 19, 2018 | Sep 11, 2020 | Sep 11, 2020 | | |
| Freedom Elementary School | Hopkinsville | KY | 42240-2649 | K | 6 | Jan 3, 2019 | Aug 10, 2020 | Aug 10, 2020 | | |
| Hopkinsville High School | Hopkinsville | KY | 42240-3899 | 9 | 12 | Feb 26, 2019 | Oct 1, 2020 | Oct 1, 2020 | | |
| Hopkinsville Middle School | Hopkinsville | KY | 42240-3898 | 7 | 8 | Jan 29, 2019 | Oct 1, 2020 | Oct 1, 2020 | Jan 7, 2020 | Jul 28, 2020 |
| Indian Hills Elementary School | Hopkinsville | KY | 42240-1399 | K | 6 | Jan 31, 2019 | Sep 30, 2020 | Sep 30, 2020 | Oct 1, 2020 | Oct 1, 2020 |
| Martin Luther King Jr Elem Sch | Hopkinsville | KY | 42240-8104 | K | 6 | Feb 14, 2019 | Sep 29, 2020 | Sep 29, 2020 | | |
| Millbrooke Elementary School | Hopkinsville | KY | 42240-5299 | K | 6 | Dec 29, 2018 | Sep 25, 2020 | Sep 25, 2020 | | |
| Pembroke Elementary School | Pembroke | KY | 42266-9760 | K | 6 | Feb 4, 2019 | Sep 28, 2020 | Sep 28, 2020 | Sep 16, 2019 | Sep 28, 2020 |
| Sinking Fork Elementary School | Hopkinsville | KY | 42240-9531 | K | 6 | Feb 4, 2019 | Mar 11, 2020 | Mar 11, 2020 | | |
| South Christian Elem School | Herndon | KY | 42236-8138 | K | 6 | Dec 14, 2018 | Oct 15, 2020 | Oct 15, 2020 | | |

[View all 12 rows and 129 columns](#)

Assessment responses on a scale of 0-3, where 0 = "Not in place", 1 = "Under development", 2 = "Partially in place", 3 = "Fully in place"

See .CSV file for full results