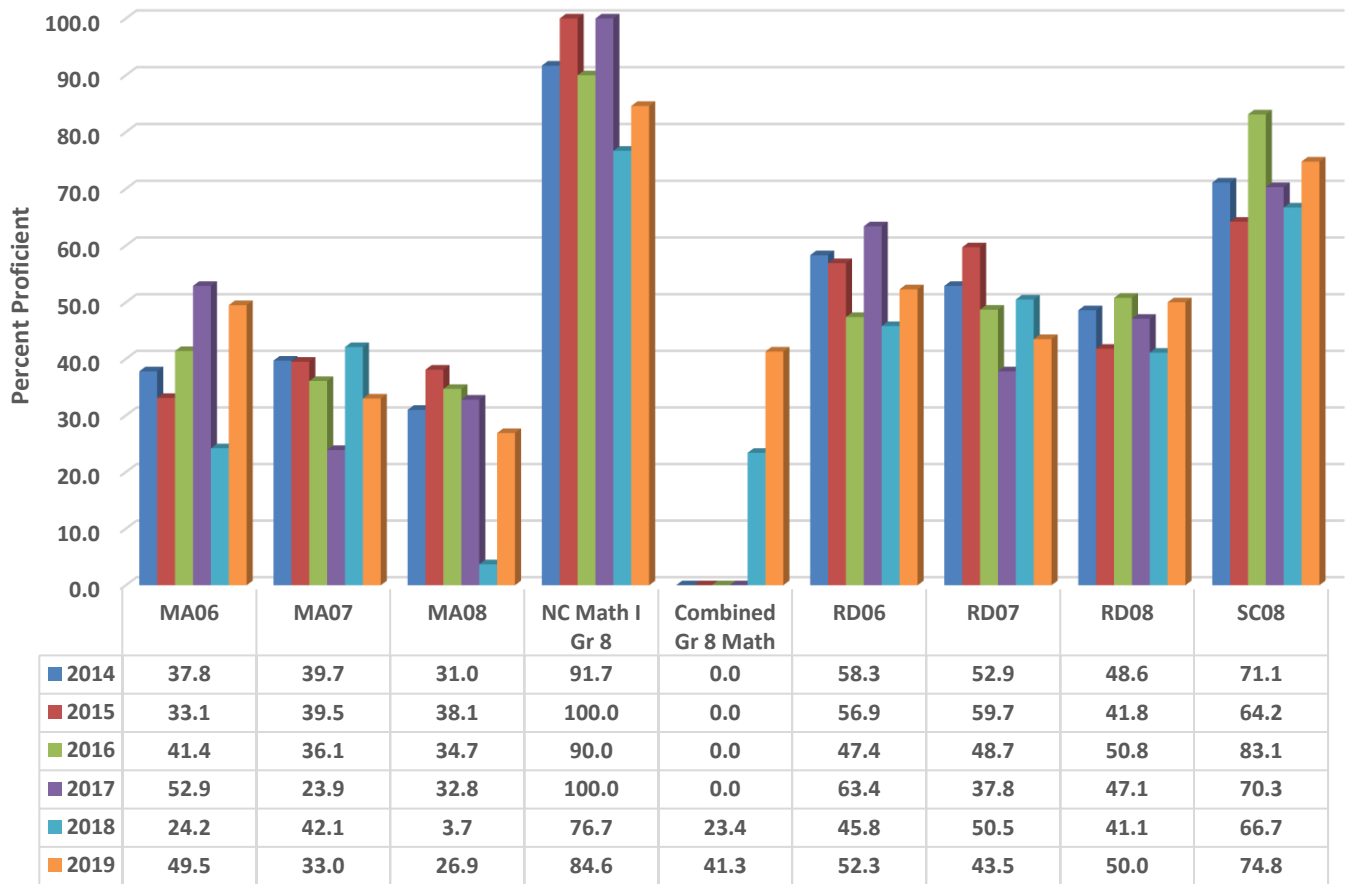


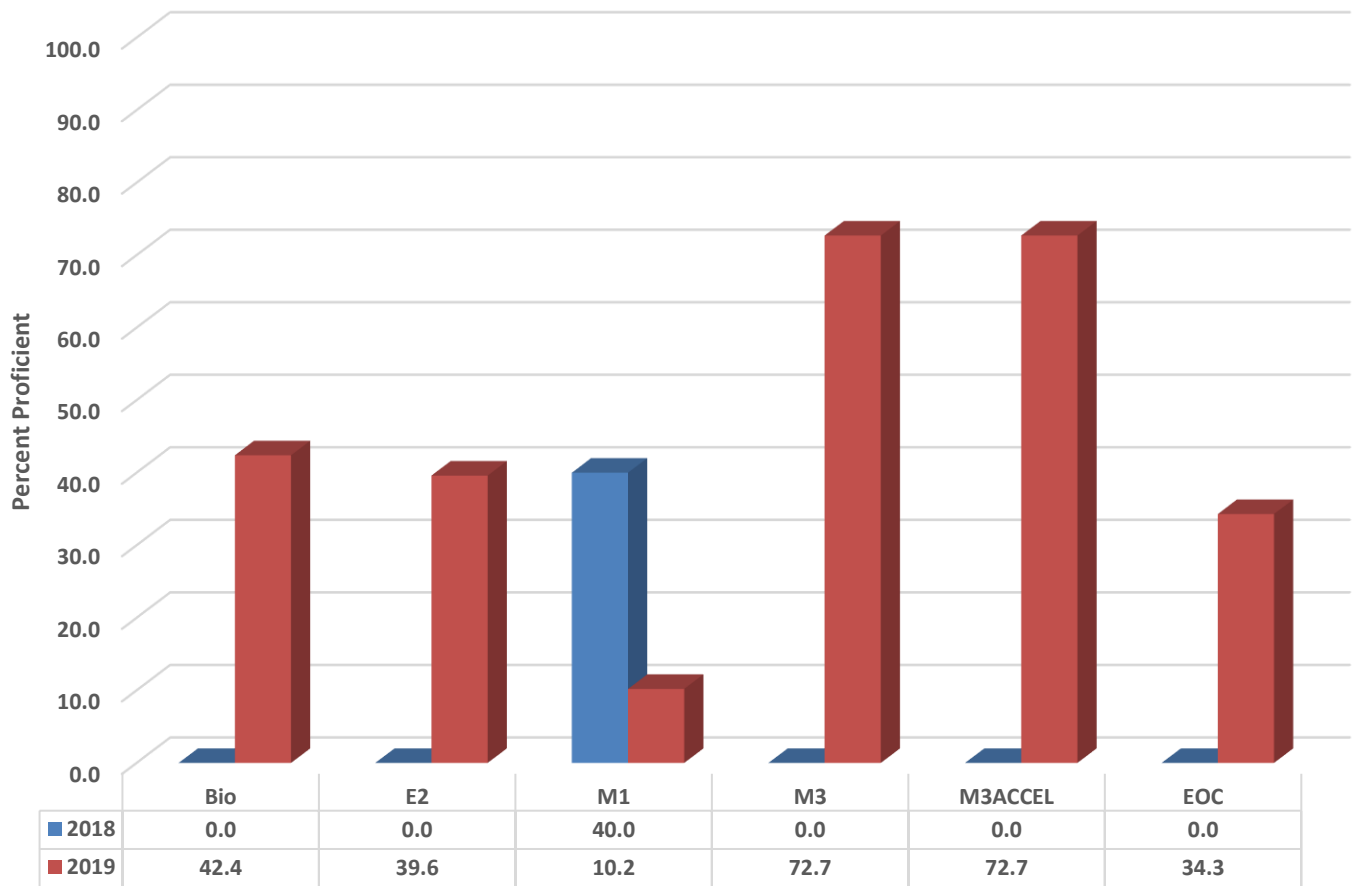
Uwharrie Ridge 6-12 Six Year Comparison Using GLP for Grades 6-8



READY Accountability Model

	CCR Denominator	CCR Percent	GLP Denominator	GLP Percent
2014	1000	39.0	1000	50.6
2015	951	38.6	951	49.3
2016	872	40.3	872	50.5
2017	817	39.2	817	47.9
2018	833	32.2	833	41.7
2019	935	33.0	935	46.2

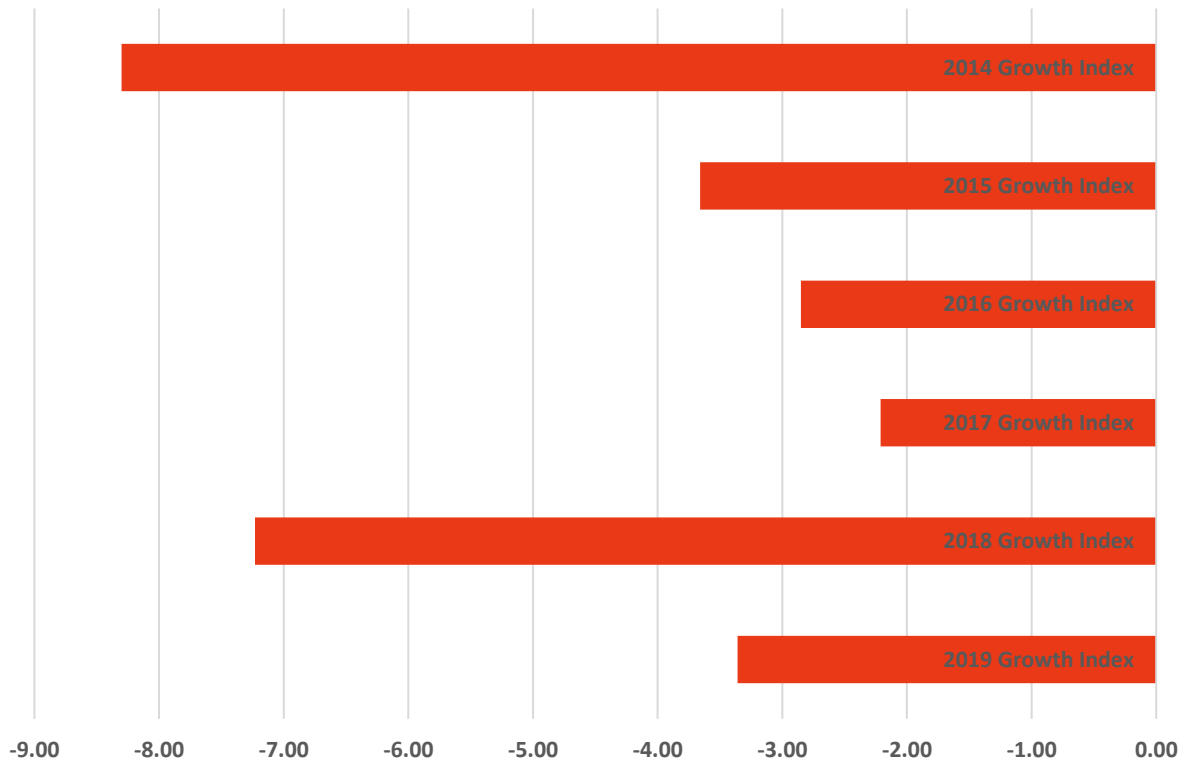
**Uwharrie Ridge 6-12
Six Year Comparison Using GLP for Grade 9-12**



Growth and Participation Targets

	EVASS Status	Total Targets	Targets Met	Target Percent
2014	Did Not Met Expected Growth	29	21	72.4
2015	Did Not Met Expected Growth	29	19	65.5
2016	Did Not Met Expected Growth	16	16	100.0
2017	Did Not Met Expected Growth	13	13	100.0
2018	Did Not Met Expected Growth	11	11	100.0
2019	Did Not Met Expected Growth	13	13	100.0

Uwharrie Ridge 6-12 Six Year Growth Index



	2019 Growth Index	2018 Growth Index	2017 Growth Index	2016 Growth Index	2015 Growth Index	2014 Growth Index
■ Uwharrie Ridge 6-12	-3.36	-7.23	-2.21	-2.85	-3.66	-8.30

Growth Index

	School Accountability Type	Index	Level
2014	Math, Reading, Science, and Math I	-8.30	Did Not Met Expected Growth
2015	Math, Reading, Science, and Math I	-3.66	Did Not Met Expected Growth
2016	Math, Reading, Science, and Math I	-2.85	Did Not Met Expected Growth
2017	Math, Reading, Science, and Math I	-2.21	Did Not Met Expected Growth
2018	Math, Reading, Science, NC Math I, English II, and Biology	-7.23	Did Not Met Expected Growth
2019	Math, Reading, Science, NC Math I, NC Math III, English II, and Biology	-3.36	Did Not Met Expected Growth