

Seaside School District 10

Pre-Proposal Conference Construction Management RFP

Before the School Bond



After the School Bond



Purpose of today's meeting

- Introductions
- District and Project Overview
- Vendor Registration Form
- Questions

Welcome to the Seaside School District

- Communities of Cannon Beach, Gearhart, and Seaside
- 1550 students enrolled in four schools
- Strong commitment to Literacy, STEM, and the ARTS
- Staff and school board with exceptional stability and longevity
- Highly committed community – 65% YES vote on the school construction bond

What We Believe...

**All students
can realize
success**

**Every decision must be viewed
through an equity lens**

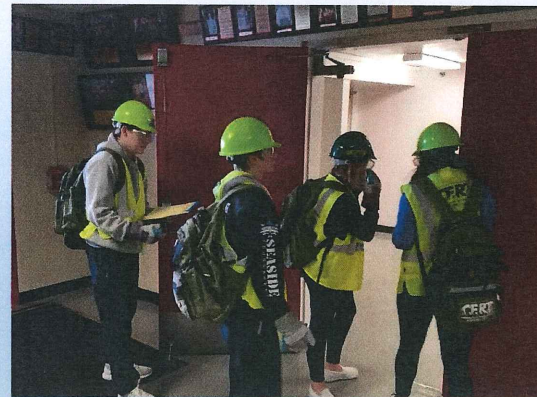
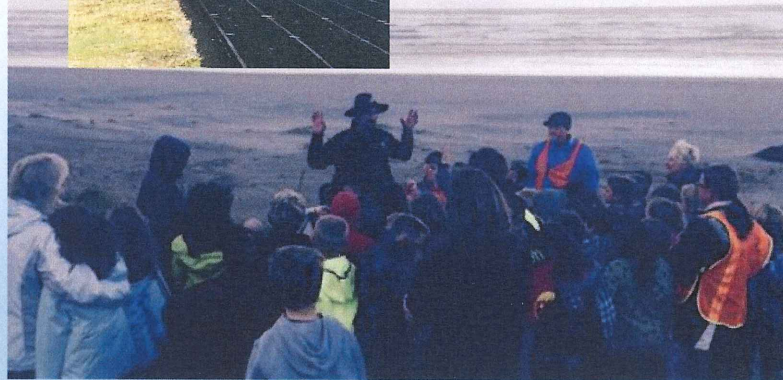
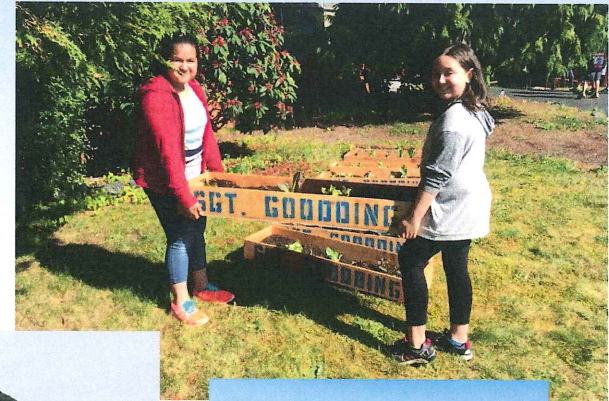
*We are in the
relationship
business*

**Best Effort, by
everyone,
for each child,
every day**

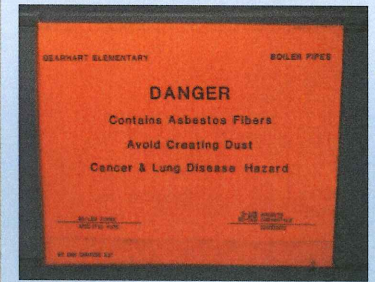
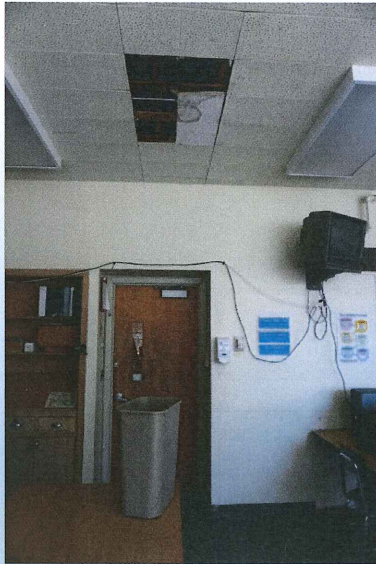
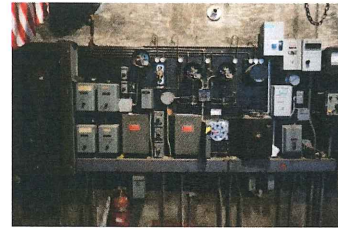
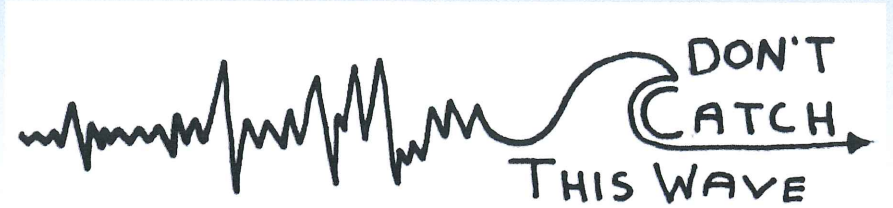
We grow the whole child

**We are
all teachers
& learners**

Creating an Extension of Our Local Environment



New K-12 Campus

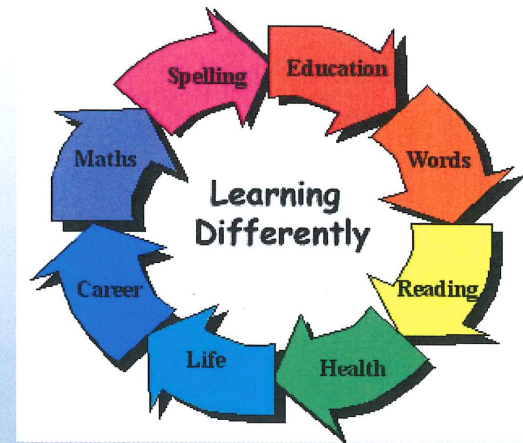


A Campus of Collaborative Financial Partners

- Coho Creek Culvert Project (2011)
 - \$428,593
 - *Necanicum Watershed Council, Oregon Watershed Enhancement Board, United States Fish and Wildlife Service, Oregon Department of Fish and Wildlife, City of Seaside, National Oceanic and Atmospheric Administration, L&C Tree Farms, LLC (Campbell Group)*
- New Campus Property Donation (2016)
 - 80 Acres
 - Weyerhaeuser
- Oregon School Capital Improvement Matching Program (OSCIM Program 2016)
 - \$4,000,000 Matching Grant
 - Oregon Department of Education, State of Oregon

Inclusion: Meeting the Requirements of our Students, Staff and Community

Integrating Equity



More than Meeting Requirements Exceeding Expectations



"Having worked at Intel for 19 years, I can tell you that **students need an up-to-date education to compete.** Not only don't our schools have current technology; they don't even have the outlets to plug it in. **This bond will fix that.**"

—Gail Dundas
Seaside Mom

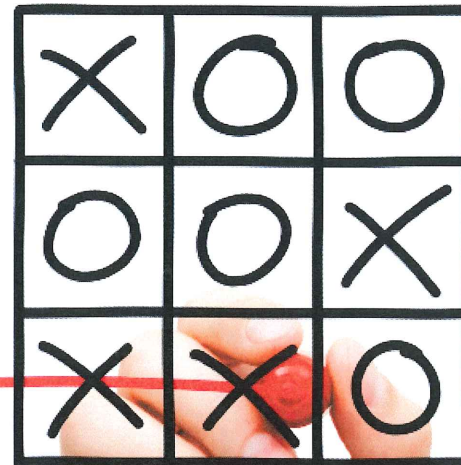


"Whether or not we have children in them now, **we all benefit from good schools.** They strengthen our property values our community. The people who came before us made sure we had the schools that helped us to a good life. **It's time we paid that forward.**"

—Carol Brenneman
Retiree

“To Infinity and Beyond”

THINK
OUTSIDE
THE BOX





TSUNAMI EVACUATION MAP SEASIDE & GEARHART, OREGON



IF YOU FEEL AN EARTHQUAKE:

- Drop, cover, and hold
- Move immediately inland to higher ground
- Do not walk for an official warning

SI USTED SIENTE EL TEMBLOR:

- Tírese al suelo, cúbrase, y espere
- Diríjase de inmediato a un lugar más alto que el nivel del mar
- No espere por un aviso oficial



ASSEMBLY AREA	OUTSIDE HAZARDOUS AREA: Evacuate to this area if you are in a tsunami evacuation zone (warning of 700 feet or less) and you are in a tsunami evacuation zone (warning of 700 feet or less)	ZONA DE PELIGRO EXTENDIDO: Evacue a esta zona si usted vive en un área de evacuación por tsunami (advertencia de 700 pies o menos) y usted vive en un área de evacuación por tsunami (advertencia de 700 pies o menos)
LOCAL CASCADIA EARTHQUAKE AND TSUNAMI Evacuation zone for a local Cascadia earthquake	MARSHING LOCAL (Verano de Cascadia) Evacuation zone for a local Cascadia earthquake	MARSHING LOCAL (Verano de Cascadia) Evacuation zone for a local Cascadia earthquake
DISTANT TSUNAMI Evacuation zone for a distant tsunami	MARSHING DISTANT (Zona de evacuación por un tsunami distante de un terremoto lejano) Evacuation zone for a distant tsunami	MARSHING DISTANT (Zona de evacuación por un tsunami distante de un terremoto lejano) Evacuation zone for a distant tsunami

MAP SYMBOLS / SIMBOLOS DEL MAPA

- Evacuation route / Ruta de evacuación
- Assembly area / Área reunión
- Bridge / Puente
- School / Escuela
- City Hall / Municipalidad
- Fire Department / Bomberos
- Law enforcement / Policía
- Hospital / Hospital
- Airport/Aeropuerto
- Trail / Sendero
- +38' Elevation, in feet / Elevación, en pies

SCALE / ESCALA
0.25 mile
0.25 km

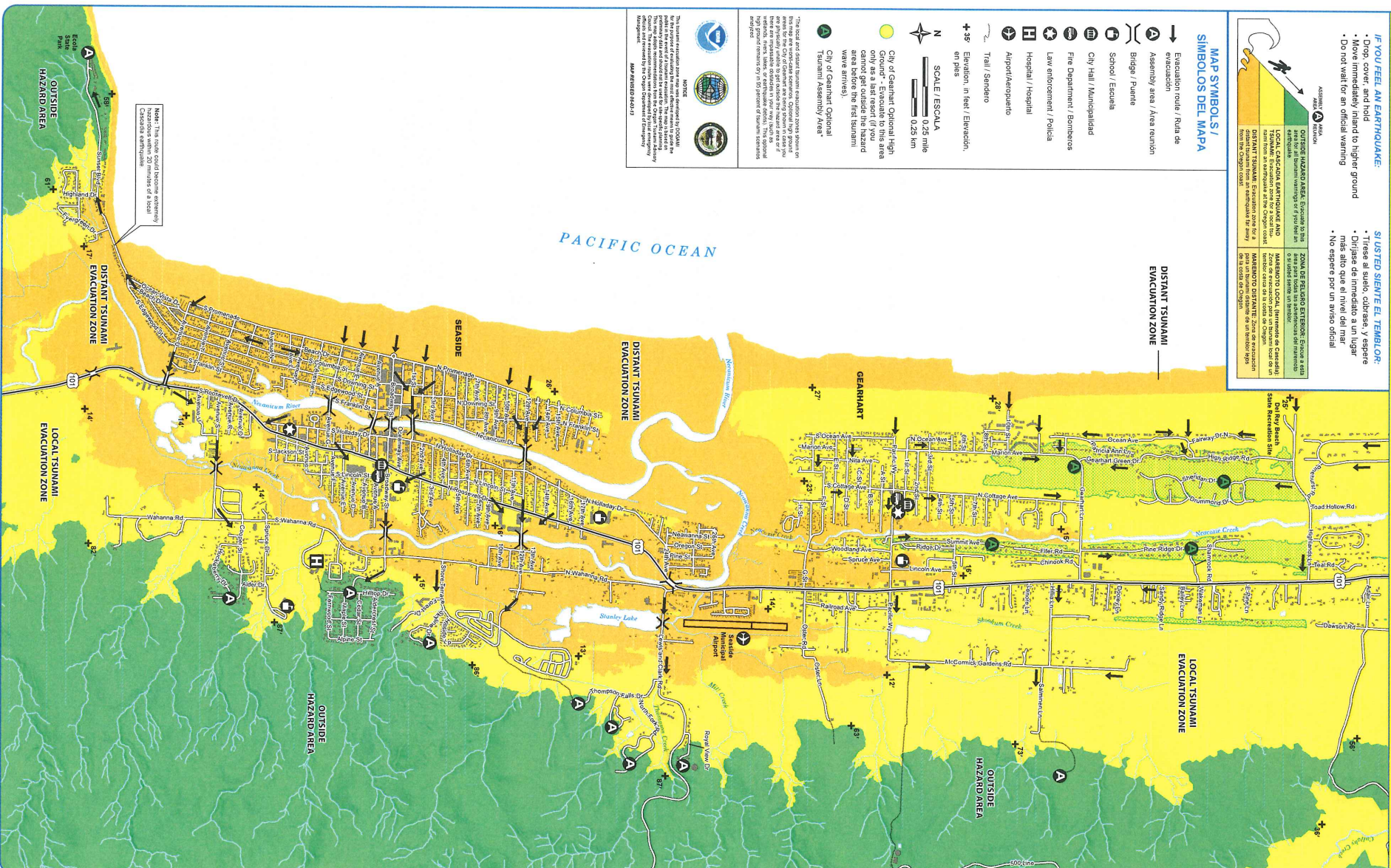
City of Gearhart Optional High Ground Evacuation Route
City of Gearhart Optional Tsunami Assembly Area*

This map and associated evacuation routes were developed by the City of Gearhart and the City of Seaside. The City of Gearhart and the City of Seaside are not responsible for any damage or injury that may result from the use of this map. The City of Gearhart and the City of Seaside are not responsible for any damage or injury that may result from the use of this map. The City of Gearhart and the City of Seaside are not responsible for any damage or injury that may result from the use of this map.



NOTICE

This map and associated evacuation routes were developed by the City of Gearhart and the City of Seaside. The City of Gearhart and the City of Seaside are not responsible for any damage or injury that may result from the use of this map. The City of Gearhart and the City of Seaside are not responsible for any damage or injury that may result from the use of this map. The City of Gearhart and the City of Seaside are not responsible for any damage or injury that may result from the use of this map.



Note: This route could become extremely hazardous during a local Cascadia earthquake.

If you feel an earthquake, a tsunami may be coming...

WHAT TO DO:

- **DROP COVER, HOLD** until the earthquake is over; protect yourself and get away from low-lying buildings.
- **MOVE IMMEDIATELY INLAND** to high ground.
- **FOLLOW EVACUATION ROUTE SIGNS** if you are on a road.
- **DO NOT WAIT** for an official warning.
- **DO NOT PACK** or delay.
- **DO NOT RETURN** to the beach—large waves may continue to come onshore for several hours.
- **WAIT** for an "all clear" from local emergency officials before returning to low-lying areas.



www.OregonTsunami.org



CONTACTS

City of Gearhart
489 Parkside Street
Seaside, OR 97138
(503) 738-0031 / 728-5511
www.cityofgearhart.com

Gearhart Fire Department
670 Public Way
Gearhart, OR 97138
www.gearhartfire.com

City of Gearhart
608 Public Way
Gearhart, OR 97138
www.cityofgearhart.com

Clatsop County Emergency Management
800 Exchange Street, Suite 402
Astoria, OR 97103
www.co.clatsop.or.us

Oregon Emergency Management
3225 State Street, Suite, OR 97201
P.O. Box 14702, Salem, OR 97306-5824
http://www.oregon.gov/OCDEM/

Oregon Department of Geology and Mineral Industries
800 NE Oregon Street, Suite 915
Portland, OR 97232
http://www.oregon.gov/ogdi/

Nature of the Northwest Information Center
800 NE Oregon Street, Suite 915
Portland, OR 97232
http://www.natureofnw.org

International Tsunami Information Center
737 Baring Street, Suite 3200
Honolulu, HI 96813
http://icdc.hawaii.edu/

BE PREPARED!

Assemble **emergency kits** with at least a 3-day supply for each family member:

- Local map showing safe evacuation routes to high ground
- First-aid supplies, prescriptions and non-prescription medication
- Water bottle and filtration or treatment supplies capable of providing 1 gallon per person per day
- Non-perishable food (ready-to-eat meals, canned food, baby food, energy bars)
- Cooking and eating utensils, can opener, Sterno® or other heat source
- Matches in water-proof container or lighter
- Shelter (tent), sleeping bags, blankets
- Portable radio, NOAA weather radio, flashlight, and extra batteries
- Rain gear, sturdy footwear, extra clothing
- Personal hygiene items (toilet paper, soap, toothbrush)
- Tools and supplies (pocket knife, shut-off wrench, duct tape, gloves, whistles, plastic bags)
- Cash

How to help with tsunami awareness in your community

- Start a tsunami buddy system
- Make and distribute emergency packs
- Initiate or participate in a local preparedness program

Visit OregonTsunami.org to find more great resources!

Climb to Assembly Area



Local tsunamis

A **local tsunami** can come onshore within 15 to 20 minutes after the earthquake — before there is time for an official warning from the national warning system. Ground shaking from the earthquake may be the only warning you have. Evacuate quickly!

Distant tsunamis

A **distant tsunami** will take 4 hours or more to come ashore. You will feel no earthquake, and the tsunami will generally be smaller than that from a local earthquake. Typically, there is time for an official warning and evacuation to safety. Evacuation for a distant tsunami will generally be indicated by a **3-minute siren blast** (if your area has sirens) and an announcement over NOAA weather radio that the local area has been put into an official **TSUNAMI WARNING**. In isolated areas along beaches and bays you may not hear a warning siren. Here, a **sudden change of sea level** should prompt you to move immediately to high ground. If you hear the 3-minute blast or see a sudden sea level change, first evacuate away from shoreline areas, then turn on your local broadcast media or NOAA weather radio for more information.

WHAT TO DO for both local and distant tsunamis

1. Evacuate on foot, if at all possible. Follow evacuation signs and arrows to an Assembly Area.*
2. If you need help evacuating, tie something **white** (sheet or towel) to the front door knob. Make it large enough to be visible from the street. If the emergency is a distant tsunami, then help may arrive. In the event of a local tsunami, it is unlikely that anyone will help you, so make a plan and be prepared!
3. Stay away from potentially hazardous areas until you receive an **ALL CLEAR** from local officials. Tsunamis often follow river channels, and dangerous waves can persist for several hours. Local officials must inspect all flooded or earthquake-damaged structures before anyone can go back into them.
4. After evacuation, check with local emergency officials if you think you have special skills and can help, or if you need assistance locating lost family members.

*Assembly areas are shown on the map. Do not confuse Assembly Areas with Evacuation Centers, which are short-term help centers set up *after* a disaster occurs.

WHAT TO KNOW about tsunamis

A **tsunami** is a series of sea waves, usually caused by a displacement of the ocean floor by an undersea earthquake. As tsunamis enter shallow water near land, they increase in height and can cause great loss of life and property damage.

Recent research suggests that tsunamis have struck the Oregon coast on a regular basis. They can occur any time, day or night. Typical wave heights from tsunamis occurring in the Pacific Ocean over the last 500 years have been 20–65 feet at the shoreline. However, because of local conditions a few waves may have been much higher — as much as 100 feet.

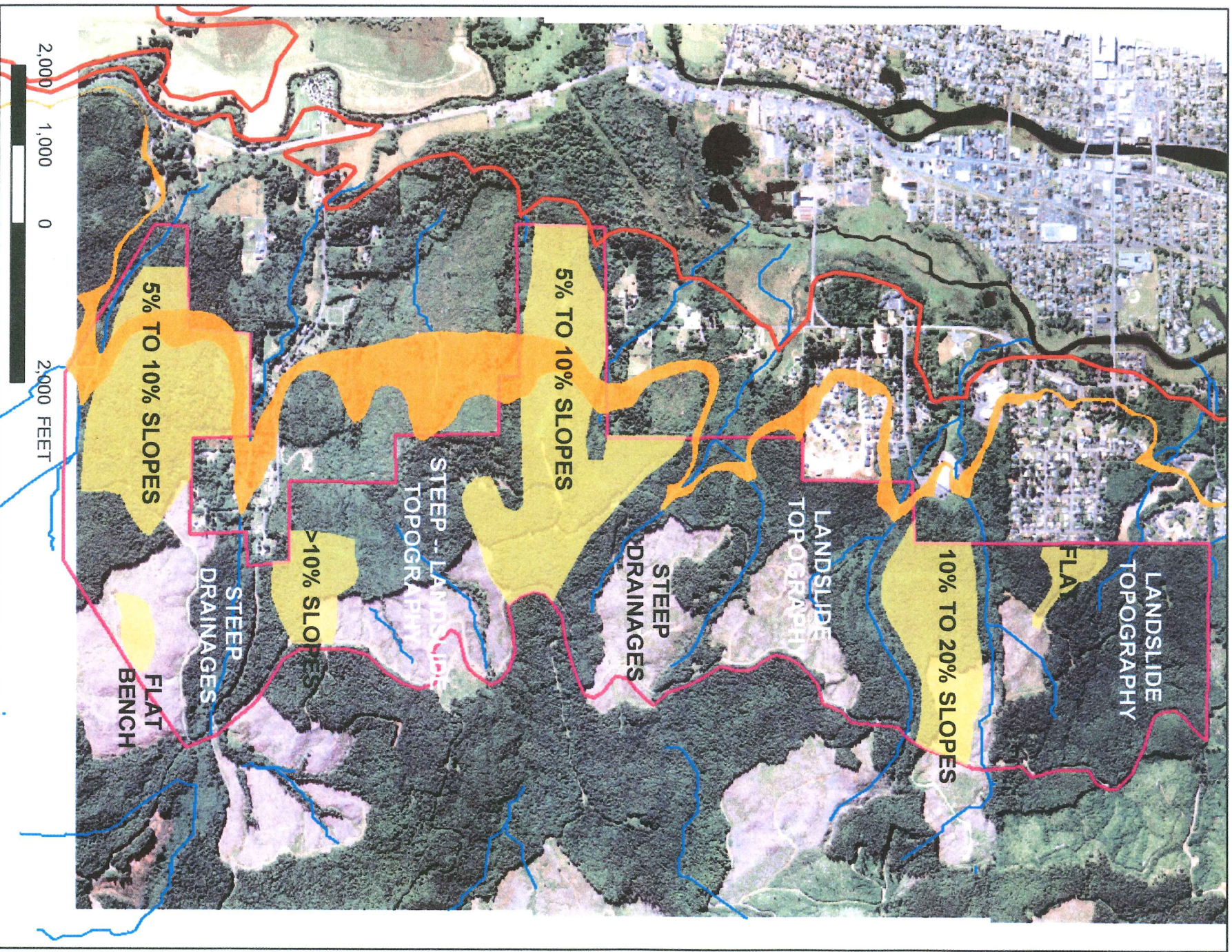
We distinguish between a tsunami caused by an undersea earthquake near the Oregon coast (a **local tsunami**) and an undersea earthquake far away from the coast (a **distant tsunami**).

Look for these hazard zone signs and be ready to leave the area by following evacuation route signs.








Seaside & Gearhart

This information could **save your life**. Please respond and share it with your family and friends.

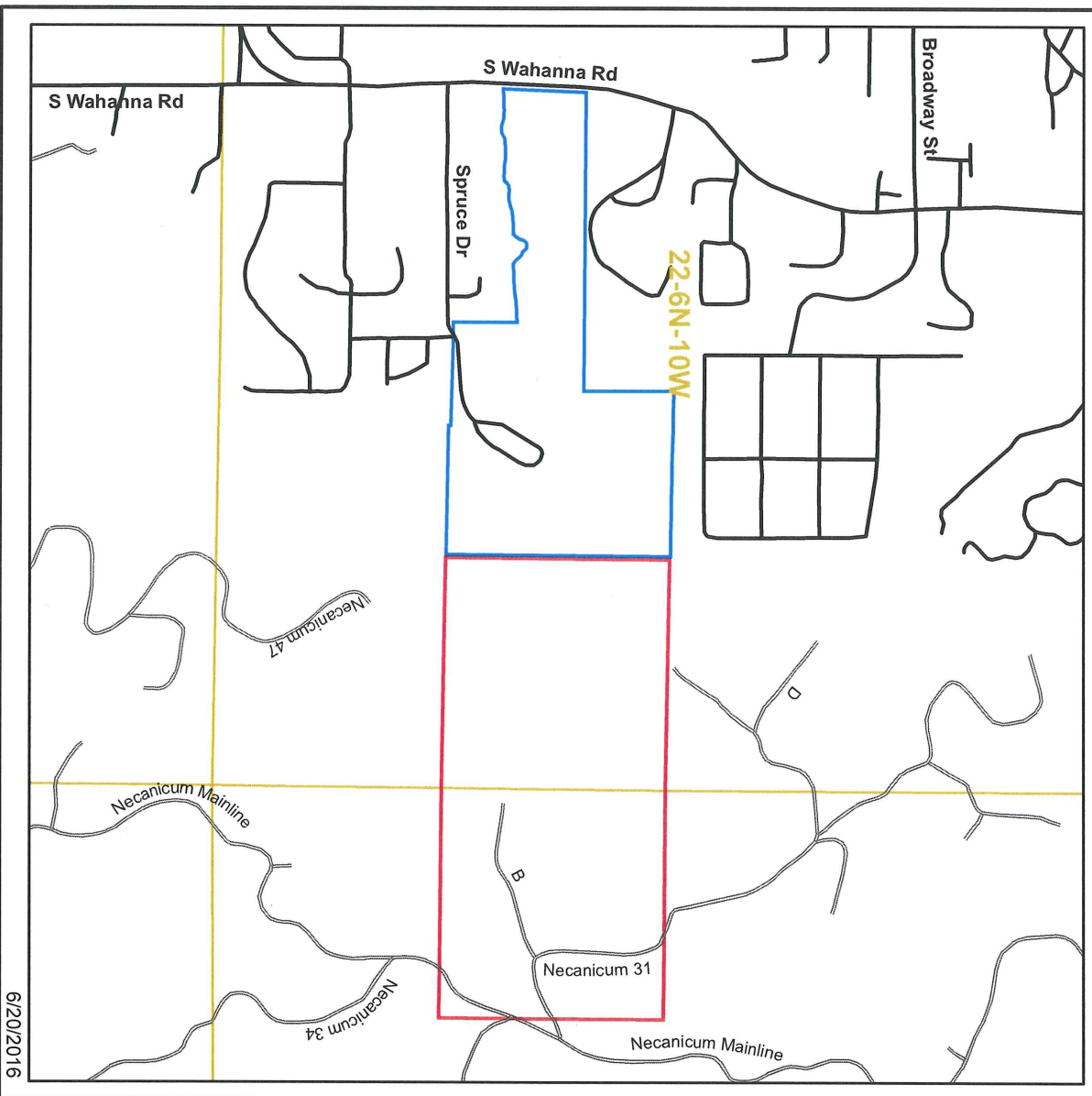


Land Donation Map

Clatsop County tax lots used for boundary delineation.

-  Seaside Heights Elementary School
-  Donated Property - Meyerhaeuser
-  Paved Road
-  Gravel Road
-  PLSS-Section

1 inch = 1,000 feet 



County: Clatsop
 Watershed: Necanicum
 FPA District: Astoria
 Elevation:



Weyerhaeuser

Latitude 45 59 13.232
 Longitude 123 54 2.258

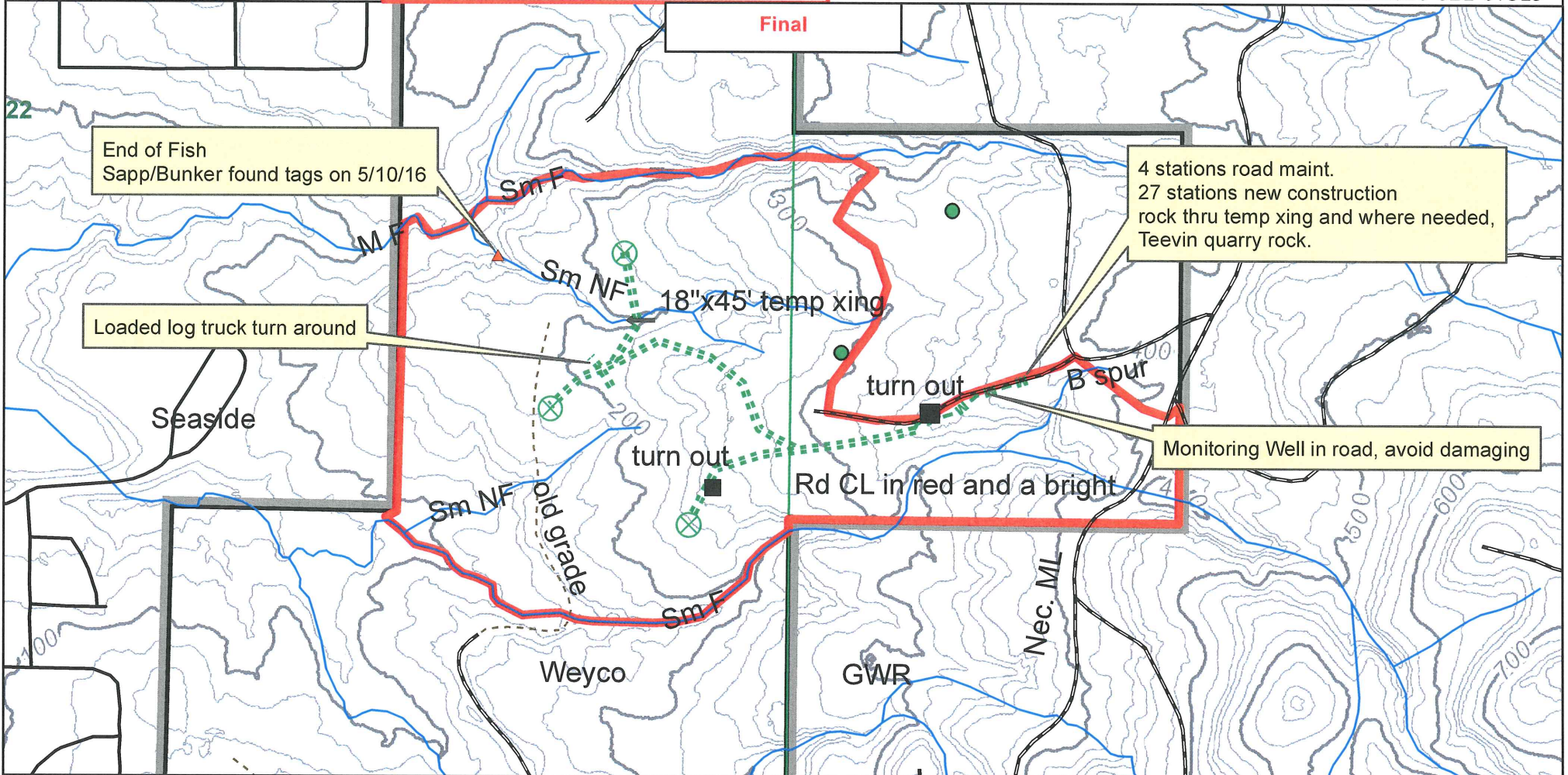
Emergency Route

From Seaside travel south on hwy 101 for 1 mile to Beerman Creek Rd. Turn east on this road and travel 1 mile to gate. proceed through gate, go 1/2 mile to jct, take north turn onto Nec ML.

Vernonia
 Clearcut HarvestR/W Map
 Seaside
 22-6N-10W



Setting: X7899
 R/W#: X6555
 HPU: SEASIDE
 Harv.Yr.: 2017
 FPA: 2016-521-07513



- | | | | | | |
|--|----------------|--|-------------------------------|--|------------------------|
| | Corner | | End of Fish | | Bridge |
| | Culvert | | Stream | | Rock Pit |
| | Lat/Long Pt. | | Small/Medium/Large | | Tail Tree |
| | Road Block | | Fish/Non-Fish | | Spoil Area |
| | Gate | | Intermittent | | Overhead Utility |
| | Landing | | Domestic Use Stream Segment | | Underground Utility |
| | Loggers Choice | | Domestic/Municipal Water Line | | |
| | Wildlife Tree | | | | Soils |
| | Water System | | | | Weyerhaeuser Ownership |

- Engineered Roads**
- New Construction
 - Maintenance
 - Reconstruction
 - Loggers Choice
 - Temporary
 - Abandon
- Existing Roads**
- Street/Highway
 - Paved
 - Gravel
 - Dirt
 - Undrivable

	Stations	
Timbered R/W	27	
Capital Grade	<u>New</u>	<u>Reconst</u>
Expense Grade	27	
Capital Rock		
Expense Rock	4-6	
Total Rock STA	4-6	
Total Grade STA	27	

Notify Engineer if survey corner is disturbed

Cut RW 50' wide, total.
 3 acres of RW MBF.
 85 MBF total.

Creator: SAPP
 Printed DATE: 06/14/2016

0 500
 1 inch = 500 feet
 Contour Interval 20 feet

