

Six-Month AHERA Asbestos Periodic Surveillance

For Compliance With:
State of Connecticut Department of Public Health (CTDPH)
Asbestos-Containing Material in Schools Regulation
(Sections 19a-333-1 through 19a-333-13)
and
United States Environmental Protection Agency (EPA)
Asbestos Hazard Emergency Response Act (AHERA)
(Title 40 CFR Part 763, Subpart E)

New Milford Public Schools
New Milford, Connecticut

October 2019



56 Quarry Road
Trumbull, CT 06611



FUSS & O'NEILL

November 4, 2019

Mr. Kevin Munrett
Facilities Manager
New Milford Public Schools
386 Danbury Road
New Milford, CT 06776

Re: Six-Month AHERA Asbestos Periodic Surveillance
Surveillance Dates: October 8 and October 9, 2019
New Milford Public Schools
Fuss & O'Neill Project No. 20071230.C40

Dear Mr. Munrett:

Enclosed is the Asbestos Hazard Emergency Response Act (AHERA) six-month periodic surveillance report prepared by Fuss & O'Neill, Inc. (Fuss & O'Neill) for the following school buildings of New Milford Public Schools in New Milford, Connecticut.

- | | |
|---------------------------------------|------------------------------------|
| 1. Facilities Administration Building | 4. Northville Elementary School |
| 2. Hill & Plain Elementary School | 5. Sarah Noble Intermediate School |
| 3. Lillis Administration Building | 6. Schaghticoke Middle School |

These reports are important documents that must be included in the existing Asbestos Management Plan (AMP). Each school should have its own report on file. In addition, a copy of each report should be maintained at a central location where the AMPs are stored.

If you have any questions regarding this report, please do not hesitate to contact me at (860) 646-2469, ext. 5333. Thank you for this opportunity to have served your environmental needs.

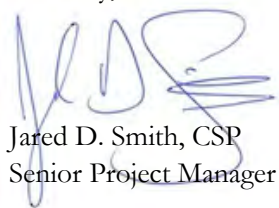
56 Quarry Road
Trumbull, CT
06611

t 203.374.3748
800.286.2469
f 203.374.4391

www.fando.com

California
Connecticut
Maine
Massachusetts
New Hampshire
Rhode Island
Vermont

Sincerely,



Jared D. Smith, CSP
Senior Project Manager

JDS/nw

Enclosure

Table of Contents

Six-Month AHERA Asbestos Periodic Surveillance New Milford Public Schools

Section 1	Facilities Administration Building
Section 2	Hill & Plain Elementary School
Section 3	Lillis Administration Building
Section 4	Northville Elementary School
Section 5	Sarah Noble Intermediate School
Section 6	Schaghticoke Middle School

Appendices

End of Report

APPENDIX A	FUSS & O'NEILL ASBESTOS INSPECTOR CTDPH LICENSES AND EPA ACCREDITATIONS
APPENDIX B	FLOOR PLANS

Section 1

Facilities Administration Building

Six-Month AHERA Asbestos Periodic Surveillance

For Compliance With:
State of Connecticut Department of Public Health (CTDPH)
Asbestos-Containing Material in Schools Regulation
(Sections 19a-333-1 through 19a-333-13)
and
United States Environmental Protection Agency (EPA)
Asbestos Hazard Emergency Response Act (AHERA)
(Title 40 CFR Part 763, Subpart E)

Facilities Administration Building
New Milford, Connecticut

October 2019



56 Quarry Road
Trumbull, CT 06611

Introduction

Fuss & O'Neill, Inc. (Fuss & O'Neill) was retained by New Milford Public Schools (the "Client") to conduct six-month periodic surveillances of previously identified asbestos-containing building materials (ACBM) at the Facilities Administration Building. This periodic surveillance was conducted in accordance with the requirements of the State of Connecticut Department of Public Health (CTDPH) Asbestos-Containing Material in Schools regulation (Section 19a-333-1 through 19a-333-13) and the United States Environmental Protection Agency (EPA) Asbestos Hazard Emergency Response Act (AHERA) regulation (Title 40 CFR Part 763, Subpart E).

On October 8, 2019, Ben Silverman and Scott Criscuolo of Fuss & O'Neill performed the periodic surveillance. Mr. Silverman and Mr. Criscuolo are CTDPH-licensed Asbestos Inspectors (refer to *Appendix A*). This surveillance was based on available information in the existing Asbestos Management Plan (AMP) for this building provided to Fuss & O'Neill by the Client.

Scope of Work

Periodic surveillance involves the visual reassessment of any ACBM or assumed ACBM in the AMP for the Facilities Administration Building. The date of the periodic surveillance, as well as the location of each area, was noted along with any changes of the ACBM condition. The results of this surveillance are listed in the periodic surveillance form included in this report.

Discussion

During this surveillance, minor changes in the condition of the ACBM identified in the AMP were observed. Specific ACBM locations are listed in the attached periodic surveillance form.

AHERA regulations pertain to interior identified or assumed ACBM and limited exterior ACBM. AHERA regulations do include ACBM located on exterior porticos, covered walkways, and mechanical equipment used to condition interior building air. Suspect ACBM has not been previously identified in these areas at the Facilities Administration Building; however, suspect asbestos-containing asphaltic roofing materials (built-up roofing, base flashing, sealants, waterproofing, etc.) were noted on the building exterior. In accordance with EPA National Emission Standards for Hazardous Air Pollutants (NESHAP), prior to disturbance, samples of these suspect ACBM must be collected and analyzed for asbestos content.

Conclusion

The majority of the previously identified ACBM were observed to be in similar condition to the most recent 6-month periodic surveillance with the exception of additional damaged pipe insulation and plaster ceiling observed in the basement as well as water damaged ceiling tile observed in the 1st floor Maintenance Assistant's office

If renovation or demolition activities are scheduled that will impact identified or suspect (assumed) ACM, the ACM or assumed ACM must be removed by a CTDPH-licensed Asbestos Abatement Contractor, or sampled to determine asbestos content prior to disturbance. This is a CTDPH Standards for Asbestos Abatement requirement, as well as an EPA NESHAP requirement.

Report prepared by Environmental Technicians Scott Criscuolo and Ben Silverman.

Reviewed by:



Eduardo Miguel Marques
Senior Environmental Analyst



Jared D. Smith, CSP
Senior Project Manager

6-Month Periodic Surveillance Form

Local Education Agency (LEA): New Milford Public Schools.

Facility Address: Facilities Administration Building, 386 Danbury Road, New Milford, CT 06776

Date of Surveillance: October 8, 2019

ACBM 6-Month Surveillance Report

Asbestos-Containing Building Material	Location	Previous Condition	Present Condition	Change in Condition (Yes/No)	Estimated Damaged Quantity	Comments
White Pipe Insulation	Basement	D	D	Yes	14 LF	8 LF of Pipe Insulation previously identified as damaged in the Basement. Material is covered with poly sheeting but remains loosely attached to the pipe. Additional 6 LF of damage identified October 2019. Pipe seam open, exposed.
White Pipe Fitting Insulation	Basement	G	G	No	NA	Material appears to be covered in PVC
White 1' x 1' Ceiling Tiles & Associated Glue Daubs	2 nd Floor NE Office (Previously Identified As 2 nd floor Secretary's Office)	IA	IA	No	NA	Material Primarily Covered by Thin Skim Coat and White Paint; Water Damage On Skim Coat Material assumed to be ACBM; recommend sampling prior to disturbance
Silver Duct Insulation	Attic, Basement Wall Cavities	G	G	No	NA	Material assumed to be ACBM; recommend sampling prior to disturbance

Asbestos-Containing Building Material	Location	Previous Condition	Present Condition	Change in Condition (Yes/No)	Estimated Damaged Quantity	Comments
Tan/Black Batt Wrapping Insulation	Attic	D	D	No	200 SF	Material is assumed to be ACBM. Recommend posting signage at entry to attic to restrict access. Recommend sampling material to determine asbestos content
Black Sheet Paper Underneath Two Layers of Flooring	Kitchen	IA	IA	No	NA	Material is inaccessible, only a small area is exposed where a dishwasher was previously located. Material assumed to be ACBM; recommend sampling prior to disturbance
Yellow Ceramic Wall Tile, associated grout and adhesive	Bathrooms	G	G	No	NA	Material assumed to be ACBM; recommend sampling prior to disturbance
Red Wall Paper	1 st Floor Bathroom, 1 st floor Secretary Office	G	G	No	NA	Material assumed to be ACBM; recommend sampling prior to disturbance
White/Blue Wall Paper	1 st floor Facilities Manager office, 1 st floor Maintenance Assistant office	G	G	No	NA	Material assumed to be ACBM; recommend sampling prior to disturbance
Yellow Wall Paper	1 st floor Storage room	G	G	No	NA	Material assumed to be ACBM; recommend sampling prior to disturbance

Asbestos-Containing Building Material	Location	Previous Condition	Present Condition	Change in Condition (Yes/No)	Estimated Damaged Quantity	Comments
Gray Plaster Base Coat	Throughout Walls, Ceiling and Chimney at the Attic	F	D	Yes	90 SF	Materials sampled in 2000 and determined to be Non-ACM. (Sample IDs: DF-1030-09A, DF-1030-11B, and DF-1030-9C.) Recommend additional sampling to meet NESHAP requirements prior to removing material from AMP
White Plaster Skim Coat	Throughout Walls, Ceiling and Chimney at the Attic	F	D	Yes	90 SF	Materials sampled in 2000 and determined to be Non-ACM. (Sample IDs: DF-1030-08A, DF-1030-10B, and DF-1030-8C.) Recommend additional sampling to meet NESHAP requirements prior to removing material from AMP
White Textured Skim Coat	Room 2-3, Stairwells	G	G	No	NA	Material assumed to be ACBM; recommend sampling prior to disturbance
White Gypsum Board Wall & Joint Compound	Rear foyer, Bathrooms, Room 1, 2-2, 2-3, 2-4	G	G	No	NA	Material not observed in rear foyer. Evaluate during next triennial inspection. Material assumed to be ACBM; recommend sampling prior to disturbance
White Laminated Wall Panel & Associated Adhesive	Kitchen (at stove/sink wall)	G	G	No	NA	Material assumed to be ACBM; recommend sampling prior to disturbance

Asbestos-Containing Building Material	Location	Previous Condition	Present Condition	Change in Condition (Yes/No)	Estimated Damaged Quantity	Comments
Black Laminated Counter Top	Kitchen	G	G	No	NA	Material assumed to be ACM; recommend sampling prior to disturbance
White 2" x 2" Ceiling Tiles	1 st floor Maintenance Assistant office	G	D	Yes	4 SF	6 Water Damaged Tiles Material assumed to be ACM; recommend sampling prior to disturbance.

Conditions: D = Damaged; F = Fair; G = Good; IA = Inaccessible; NA = Not Applicable

Surveillance conducted by: Ben Silverman



Scott Criscuolo



(Print name)

(Signature)

I, the LEA's Designated Person, have read and understood the findings noted above: _____ Date: _____

Section 2

Hill & Plain Elementary School

Six-Month AHERA Asbestos Periodic Surveillance

For Compliance With:
State of Connecticut Department of Public Health (CTDPH)
Asbestos-Containing Material in Schools Regulation
(Sections 19a-333-1 through 19a-333-13)
and
United States Environmental Protection Agency (EPA)
Asbestos Hazard Emergency Response Act (AHERA)
(Title 40 CFR Part 763, Subpart E)

Hill & Plain Elementary School
New Milford, Connecticut

October 2019



56 Quarry Road
Trumbull, CT 06611

Introduction

Fuss & O'Neill, Inc. (Fuss & O'Neill) was retained by New Milford Public Schools (the "Client") to conduct six-month periodic surveillances of previously identified asbestos-containing building materials (ACBM) at Hill & Plain Elementary School. This periodic surveillance was conducted in accordance with the requirements of the State of Connecticut Department of Public Health (CTDPH) Asbestos-Containing Material in Schools regulation (Section 19a-333-1 through 19a-333-13) and the United States Environmental Protection Agency (EPA) Asbestos Hazard Emergency Response Act (AHERA) regulation (Title 40 CFR Part 763, Subpart E).

On October 8, 2019, Ben Silverman and Scott Criscuolo of Fuss & O'Neill performed the periodic surveillance. Mr. Silverman and Mr. Criscuolo are CTDPH-licensed Asbestos Inspectors (refer to *Appendix A*). This surveillance was based on available information in the existing Asbestos Management Plan (AMP) for this building provided to Fuss & O'Neill by the Client.

Scope of Work

Periodic surveillance involves the visual reassessment of any ACBM or assumed ACBM in the AMP for Hill & Plain Elementary School. The date of the periodic surveillance, as well as the location of each area, was noted along with any changes of the ACBM condition. The results of this surveillance are listed in the periodic surveillance form included in this report.

Discussion

During this surveillance, minor changes in the condition of the ACBM identified in the AMP were observed. Specific ACBM locations are listed in the attached periodic surveillance form.

AHERA regulations pertain to interior identified or assumed ACBM and limited exterior ACBM. AHERA regulations do include ACBM located on exterior porticos, covered walkways, and mechanical equipment used to condition interior building air. Suspect ACBM have not been previously identified in these areas at the Hill & Plain Elementary School; however, suspect asbestos-containing asphaltic roofing materials (built-up roofing, base flashing, sealants, waterproofing, etc.) were noted on the building exterior. In accordance with EPA National Emission Standards for Hazardous Air Pollutants (NESHAP), prior to disturbance, samples of these suspect ACBM must be collected and analyzed for asbestos content.

Conclusion

The previously identified ACBM were observed to be in similar condition to the most recent 6-month periodic surveillance. Additionally flooring materials were abatement from the cafeteria and Room 19 during the summer of 2019.

If renovation or demolition activities are scheduled that will impact identified or suspect (assumed) ACBM, the ACBM or assumed ACBM must be removed by a CTDPH-licensed Asbestos Abatement

Contractor, or sampled to determine asbestos content prior to disturbance. This is a CTDPH Standards for Asbestos Abatement requirement, as well as an EPA NESHAP requirement.

Report prepared by Environmental Technicians Scott Criscuolo and Ben Silverman.

Reviewed by:



Eduardo Miguel Marques
Senior Environmental Analyst



Jared D. Smith, CSP
Senior Project Manager

6-Month Periodic Surveillance Form

Local Education Agency (LEA): New Milford Public Schools.

Facility Address: Hill & Plain Elementary School, 60 Old Town Park Road, New Milford, CT 06776

Date of Surveillance: October 8, 2019

ACBM 6-Month Surveillance Report

Asbestos-Containing Building Material	Location	Previous Condition	Present Condition	Change in Condition (Yes/No)	Estimated Damaged Quantity	Comments
Pipe Insulation & Associated Pipe Fitting Insulation	Throughout building – tunnels, above ceilings in corridor, classrooms, cafeteria, storage areas, main office, and within pipe chases	G	G/IA	Yes	NA	Some material inaccessible (above ceilings, in pipe chases).
Interior Boiler Roping, Gaskets, Firebrick Materials, etc.	Boiler room – within boilers one (1) and two (2)	IA	IA	No	NA	Material assumed to be ACBM; recommend sampling prior to disturbance
White 2'x4' Ceiling Tile	Throughout building	G	G	No	NA	Material assumed to be ACBM; recommend sampling prior to disturbance
Kiln Insulation	Art Room 15B	G	G	No	NA	Not Regulated by AHERA; for Informational Purposes Only. Material must be Managed/Disposed of as ACM. Maintain under O & M Plan. Material assumed to be ACBM; recommend sampling prior to disturbance
White Textured Ceiling Plaster	Entry to kindergarten school (Located in hallway by Rooms 1 and 3)	G	G	No	NA	Material assumed to be ACBM; recommend sampling prior to disturbance

Asbestos-Containing Building Material	Location	Previous Condition	Present Condition	Change in Condition (Yes/No)	Estimated Damaged Quantity	Comments
Plaster Ceiling	Boiler room	G	D	Yes	< 3 SF	Material assumed to be ACBM; recommend sampling prior to disturbance
Vibration Isolation Cloth	Gym Storage, Gymnasium (four locations)	G	G	No	NA	Material assumed to be ACBM; recommend sampling prior to disturbance
Gray Sink Undercoating	Classrooms 1, 2, 14A, 23A, 27, 28, 29, 30, 31, 33, 34, media center office, Art Room 15B, Music Room 15A, copy room opposite Room 13, Special Education/Health Room ("PTO") adjacent 15A	G	G	No	NA	Additional locations identified May 2019. Not Regulated by AHERA; for Informational Purposes Only. Material must be Managed/Disposed of as ACM. Maintain under O & M Plan. Material assumed to be ACBM; recommend sampling prior to disturbance
Black Sink Undercoating	Classrooms 3, 4, 5, 6, 7, 8, 9, 10, 11, 12, 13, 15-C, 16, 17, 18, 19, 20, 21, 22, 14, copy room, and main office work room	G	G	No	NA	Additional locations identified May 2019. Not Regulated by AHERA; for Informational Purposes Only. Material must be Managed/Disposed of as ACM. Maintain under O & M Plan. Material assumed to be ACBM; recommend sampling prior to disturbance
Blackboards & Associated Adhesive	Throughout building – corridors, classrooms, offices, library, main office, principal's office, teacher's room, storage rooms, and cafeteria	G	G	No	NA	Material assumed to be ACBM; recommend sampling prior to disturbance

Asbestos-Containing Building Material	Location	Previous Condition	Present Condition	Change in Condition (Yes/No)	Estimated Damaged Quantity	Comments
Tackboards & Associated Adhesive	Throughout building – corridors, classrooms, offices, library, main office, principal's office, teacher's room, storage rooms, and cafeteria	G	G	No	NA	Material assumed to be ACBM; recommend sampling prior to disturbance
Gypsum Board & Associated Joint/Taping Compound	Throughout building – corridors, classrooms (except 17 & 18), offices, storage rooms, toilet rooms, library, main office, principal's office, teacher's room, storage rooms, kitchen, boiler room, and cafeteria	G	G	No	NA	Material assumed to be ACBM; recommend sampling prior to disturbance. Gypsum board samples were collected in Rooms 17 & 18, and were determined to be Non-ACBM. Sample IDs: 080918BH-03A, & 080918BH-03B One sample of joint compound was taken in room 16 and found to be <1% ACM. Sample ID: 080918BH-09 Recommend additional sampling in representative locations prior to disturbance or removal from AMP
Gray Ductwork Joint Sealant and/or Paper	Throughout building – corridors, classrooms, offices, storage rooms, toilet rooms, library, main office, principal's office, teacher's room, storage rooms, kitchen, boiler room, and cafeteria	G	G	No	NA	Material assumed to be ACBM; recommend sampling prior to disturbance.
White Interior Window Glazing Compounds	Classrooms 1 – 22 (exterior window systems)	G	G	No	NA	Material assumed to be ACBM; recommend sampling prior to disturbance.

Asbestos-Containing Building Material	Location	Previous Condition	Present Condition	Change in Condition (Yes/No)	Estimated Damaged Quantity	Comments
Black Interior Window Glazing Compounds	Classrooms 27 – 34 (exterior window systems)	G	G	No	NA	Material assumed to be ACBM; recommend sampling prior to disturbance
Black Interior Column Caulking Compounds	Throughout building	G	G	No	NA	Material assumed to be ACBM; recommend sampling prior to disturbance.
Black Interior Window Sills	Throughout building –classrooms, offices, storage rooms, toilet rooms, library, principal's office, teacher's room, kitchen, and cafeteria	G	G	No	NA	Material assumed to be ACBM; recommend sampling prior to disturbance.
Brown 4" Cove Base & Associated Adhesive	Throughout building – corridors, classrooms, offices, storage rooms, toilet rooms, library, main office, principal's office, teacher's room, storage rooms, kitchen, boiler room, and cafeteria	G	G	No	NA	Brown cove base and associated adhesive sampled and determined to be non-ACBM in Classrooms 7 & 6. Sample IDs: 5-15-PB-01-04A, 5-15-PB-01-04B, 5-15-PB-01-05A, and 5-15-PB-01-05B Materials to be confirmed homogenous during subsequent surveillances.
Gray 4" Cove Base & Associated Adhesive	Psychologist Office 7A, 23B and conference room	G	G	No	NA	Material assumed to be ACBM; recommend sampling prior to disturbance.

Asbestos-Containing Building Material	Location	Previous Condition	Present Condition	Change in Condition (Yes/No)	Estimated Damaged Quantity	Comments
Black 4" Cove Base & Associated Adhesive	Room 22	G	G	No	NA	Black cove base and associated adhesive sampled and determined to be non-ACBM in Room 7. Sample IDs: 5-15-PB-01A, 5-15-PB-01B, 5-15-PB-02A, 5-15-PB-02B, 5-15-PB-03A, and 5-15-PB-03B Materials to be confirmed homogenous during subsequent surveillances
Cementitious Paneling	Exterior overhangs – classrooms 21-26, classrooms 16-20, teacher's room – 10, classrooms 9-10, kindergarten 1 – kindergarten 3, classrooms 4 - custodian room	G	G	No	NA	Not Regulated by AHERA; for Informational Purposes Only. Material must be Managed/Disposed of as ACM. Maintain under O & M Plan. Material assumed to be ACBM; recommend sampling prior to disturbance.
Green Ceramic Wall Tile, Associated Grout and Adhesive	Bathrooms – classrooms 7 & 9	G	G	No	NA	Material assumed to be ACBM; recommend sampling prior to disturbance.
Brown Ceramic Wall Tile Associated Grout and Adhesive	Bathrooms – classrooms 3, 5, 10, 11, 13, 14, and custodial closets	G	G	No	NA	Material assumed to be ACBM; recommend sampling prior to disturbance.
Red Ceramic Wall Tile, Associated Grout and Adhesive	Bathrooms – classrooms 1, 2, 6, & 12	G	G	No	NA	Material assumed to be ACBM; recommend sampling prior to disturbance.
Blue Ceramic Wall Tile, Associated Grout and Adhesive	Bathrooms – classrooms 4 & 8	G	G	No	NA	Material assumed to be ACBM; recommend sampling prior to disturbance.

Asbestos-Containing Building Material	Location	Previous Condition	Present Condition	Change in Condition (Yes/No)	Estimated Damaged Quantity	Comments
White With Yellow/Blue/Green Ceramic Floor Tile, Associated Grout and Adhesive	Bathrooms – classrooms & corridor bathroom at Room 2	G	G	No	NA	Material assumed to be ACBM; recommend sampling prior to disturbance.
White With Blue/Green Ceramic Floor Tile, Associated Grout and Adhesive	Bathrooms	G	G	No	NA	Material assumed to be ACBM; recommend sampling prior to disturbance.
White Ceramic Floor Tile, Associated Grout and Adhesive	Bathrooms	G	G	No	NA	Material assumed to be ACBM; recommend sampling prior to disturbance.
Brown 6" Quarry Tile, Associated Grout and Adhesive	Kitchen	G	G	No	NA	Material assumed to be ACBM; recommend sampling prior to disturbance.
Light-Blue 12" x 12" Floor Tile & Associated Adhesive	Classrooms, main office, assistant principal, nurse, book storage, media office, computer room, art, cafeteria, observation room, and corridors	G	G	No	NA	Cafeteria was abated in July 2019. Mastic remains where inaccessible underneath the stage. The AMP will be updated to reflect this change during the next triennial re-inspection Cracked/broken tiles observed in Art Room 15B, along slab joint. Material assumed to be ACBM; recommend sampling prior to disturbance.

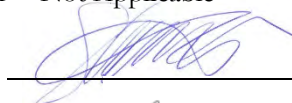
Asbestos-Containing Building Material	Location	Previous Condition	Present Condition	Change in Condition (Yes/No)	Estimated Damaged Quantity	Comments
Blue 12" x 12" Floor Tile & Associated Adhesive	Classrooms, main office, assistant principal, nurse, book storage, media office, computer room, art 15B, cafeteria, observation room, and corridors	G	G	No	NA	Cafeteria was abated in July 2019. Mastic remains where inaccessible underneath the stage. The AMP will be updated to reflect this change during the next triennial re-inspection. Material assumed to be ACBM; recommend sampling prior to disturbance. Classroom 7 was recently retiled with Blue 12"x12" Floor Tile
Tan 12" x 12" Floor Tile & Associated Adhesive	Classrooms 17, 23-26, Staff Room 15C	G	G	No	NA	< 1 SF of tile missing exposing mastic in room 26. Material not present in Classroom 17. Cracked/broken tiles observed in Music Room 15A, along slab joint. Material assumed to be ACBM; recommend sampling prior to disturbance.
Green 9" x 9" Floor Tile & Associated Mastic	Main office and main office work room	G	G	No	NA	
Tan 9" x 9" Floor Tile & Associated Mastic	Classrooms 5, 6, 8, 18, 19, Guidance Office 20A (under carpet), 21, and 22	G	G	No	NA	Material in Room 8 was abated in Summer of 2017. Material In room 19 was abated in July 2019. The AMP will be updated to reflect this change during the next triennial re-inspection

Asbestos-Containing Building Material	Location	Previous Condition	Present Condition	Change in Condition (Yes/No)	Estimated Damaged Quantity	Comments
Brown 9" x 9" Floor Tile & Associated Mastic	Classrooms 7, 9, 10, 49, Classroom closet in Room 2, electrical closet at Room 9, storage, and custodial closet	G	G	No	NA	Material abated from Room 7 in July 2018. Material In room 19 was abated in July 2019. The AMP will be updated to reflect this change during the next triennial re-inspection
Bright-green 9" x 9" Floor Tile & Associated Mastic	Copy room/mail room at principal's office	G	G	No	NA	
Dull green with white specks 9" x 9" Floor Tile & Associated Mastic	Copy room/mail room at principal's office	G	G	No	NA	
Green/gray 9" x 9" Floor Tile & Associated Mastic	Copy room/mail room at principal's office and room 17	G	G	No	NA	Material in Room 17 was abated. The AMP will be updated to reflect this change during the next triennial re-inspection
White with Black Streaks 9" x 9" Floor Tile & Associated Mastic	Copy room/mail room at principal's office and room 17	G	G	No	NA	Material in Room 17 was abated. The AMP will be updated to reflect this change during the next triennial re-inspection
Blue 9" x 9" Floor Tile & Associated Mastic	Classroom 4	G	G	No	NA	
Yellow Carpet Glue	Classrooms 1-5, 14A, media center, conference room, main office, speech, psychologist office 7A, Guidance office 20A, 23A	IA	IA	No	NA	Additional locations identified May 2019. Material assumed to be ACBM; recommend sampling prior to disturbance.
Black Rubber Flooring & Associated Adhesive	Gymnasium	G	G	No	NA	Material assumed to be ACBM; recommend sampling prior to disturbance.

Asbestos-Containing Building Material	Location	Previous Condition	Present Condition	Change in Condition (Yes/No)	Estimated Damaged Quantity	Comments
Stage Lighting Electrical Wiring	Stage	G	G	No	NA	Not Regulated by AHERA; for Informational Purposes Only. Material must be Managed/Disposed of as ACM. Maintain under O & M Plan. Material assumed to be ACBM; recommend sampling prior to disturbance.
Stage Curtain	Stage	G	G	No	NA	Not Regulated by AHERA; for Informational Purposes Only. Material must be Managed/Disposed of as ACM. Maintain under O & M Plan. Material assumed to be ACBM; recommend sampling prior to disturbance.

Conditions: D = Damaged; G = Good; IA = Inaccessible; NA = Not Applicable

Surveillance conducted by: Ben Silverman



Scott Criscuolo



(Print name)

(Signature)

I, the LEA's Designated Person, have read and understood the findings noted above: _____ Date: _____

Section 3

Lillis Administration Building

Six-Month AHERA Asbestos Periodic Surveillance

For Compliance With:
State of Connecticut Department of Public Health (CTDPH)
Asbestos-Containing Material in Schools Regulation
(Sections 19a-333-1 through 19a-333-13)
and
United States Environmental Protection Agency (EPA)
Asbestos Hazard Emergency Response Act (AHERA)
(Title 40 CFR Part 763, Subpart E)

Lillis Administration Building
New Milford, Connecticut

October 2019



56 Quarry Road
Trumbull, CT 06611

Introduction

Fuss & O'Neill, Inc. (Fuss & O'Neill) was retained by New Milford Public Schools (the "Client") to conduct six-month periodic surveillances of previously identified asbestos-containing building materials (ACBM) at the Lillis Administration Building. This periodic surveillance was conducted in accordance with the requirements of the State of Connecticut Department of Public Health (CTDPH) Asbestos-Containing Material in Schools regulation (Section 19a-333-1 through 19a-333-13) and the United States Environmental Protection Agency (EPA) Asbestos Hazard Emergency Response Act (AHERA) regulation (Title 40 CFR Part 763, Subpart E).

On October 8, 2019, Ben Silverman and Scott Criscuolo of Fuss & O'Neill performed the periodic surveillance. Mr. Silverman and Mr. Criscuolo are CTDPH-licensed Asbestos Inspectors (refer to Appendix A). This surveillance was based on available information in the existing Asbestos Management Plan (AMP) for this building provided to Fuss & O'Neill by the Client.

Scope of Work

Periodic surveillance involves the visual reassessment of any ACBM or assumed ACBM in the AMP for the Lillis Administration Building. The date of the periodic surveillance, as well as the location of each area, was noted along with any changes of the ACBM condition. The results of this surveillance are listed in the periodic surveillance form included in this report.

Discussion

During this surveillance, minor changes in the condition of the ACBM identified in the AMP were observed. Specific ACBM locations are listed in the attached periodic surveillance form.

AHERA regulations pertain to interior identified or assumed ACBM and limited exterior ACBM. AHERA regulations do include ACBM located on exterior porticos, covered walkways, and mechanical equipment used to condition interior building air. Suspect ACBM has not previously identified in these areas at the Lillis Administration Building; however, suspect asbestos-containing asphaltic roofing materials (built-up roofing, base flashing, sealants, waterproofing, etc.) were noted on the building exterior. In accordance with EPA National Emission Standards for Hazardous Air Pollutants (NESHAP), prior to disturbance, samples of these suspect ACBM must be collected and analyzed for asbestos content.

Conclusion

The majority of the previously identified ACBM were observed to be in similar condition to the most recent 6-month periodic surveillance with the exception of damaged window glazing observed in the basement and vapor barrier associated with the wood floor that was covered in the basement. Additionally, a small abatement project occurred in October 2019 where pipe and pipe fitting insulation was removed from a wall chase in the basement.

If renovation or demolition activities are scheduled that will impact identified or suspect (assumed) ACM, the ACM or assumed ACM must be removed by a CTDPH-licensed Asbestos Abatement Contractor, or sampled to determine asbestos content prior to disturbance. This is a CTDPH Standards for Asbestos Abatement requirement, as well as an EPA NESHAP requirement.

Report prepared by Environmental Technicians Scott Criscuolo and Ben Silverman.

Reviewed by:



Eduardo Miguel Marques
Senior Environmental Analyst



Jared D. Smith, CSP
Senior Project Manager

6-Month Periodic Surveillance Form

Local Education Agency (LEA): New Milford Public Schools
 Facility Address: Lillis Administration Building, 50 East Street, New Milford, CT 06776
 Date of Surveillance: October 8, 2019

ACBM 6-Month Surveillance Report

Asbestos-Containing Building Material	Location	Previous Condition	Present Condition	Change in Condition (Yes/No)	Estimated Damaged Quantity	Comments
Pipe Insulation	Vertical wall pipe chases and bathrooms, traffic coordinator's closet, Room 3 closet	G	G	No	NA	10 LF of pipe insulation abated from pipe chase in basement kitchen storage room in October 2019. Material in Room 3 closet is water damaged; leak repaired. Material in Room 3 (special education offices) determined to be ACBM in April 2019 – sample IDs: 04-18-19-SMM-01A-C.
Pipe Fitting Insulation	Vertical wall pipe chases and bathrooms, traffic coordinator's closet	G	G	No	NA	4 mudded pipe insulation fittings abated from pipe chase in basement kitchen storage room in October 2019. Material assumed to be ACBM; recommend sampling prior to disturbance.
Interior Boiler Components	Boiler Room	IA	IA	No	NA	Material assumed to be ACBM; recommend sampling prior to disturbance.
Duct Insulation Wrap	Bathrooms and 2 nd floor offices/rooms	G	G	No	NA	Material assumed to be ACBM; recommend sampling prior to disturbance.

Asbestos-Containing Building Material	Location	Previous Condition	Present Condition	Change in Condition (Yes/No)	Estimated Damaged Quantity	Comments
Silver Wall Paint	Throughout Basement	SD	SD	No	150 SF	Material Determined to be ACBM in October 2017 Sample IDs: 092017JB-01A, 092017JB-01B, 092017JB-01C
White Foundation Wall Skim Coat	Throughout Basement at exterior walls primarily covered by silver paint	D	D	No	50 SF	Material assumed to be ACBM; recommend sampling prior to disturbance.
Red Fire Caulking Compounds	Throughout building	G	G	No	NA	Material assumed to be ACBM; recommend sampling prior to disturbance
Fire Door Insulation	Throughout the building, potentially in fire doors	IA	IA	No	NA	Not Regulated by AHERA; for Informational Purposes Only. Material must be Managed/Disposed of as ACM. Maintain under O & M Plan. Material assumed to be ACBM; recommend sampling prior to disturbance
Adhesive associated with Wood Paneling	1 st floor town offices: Rooms 4 (Special Education Office), 5 (Financial Services Office), 6 (Asst. Superintendent's Office), 7 (Personnel/HR File Room), 8 (Board Room), 9 (Superintendent's Office), 10 (Payroll/Accounting Office)	IA	IA	No	NA	Additional location identified April 2019. Material assumed to be ACBM; recommend sampling prior to disturbance

Asbestos-Containing Building Material	Location	Previous Condition	Present Condition	Change in Condition (Yes/No)	Estimated Damaged Quantity	Comments
Glue Daubs associated with 1'x1' Ceiling Tile	Rooms 3 & 4 (special education offices) & adjoining restroom, gymnasium restrooms/shower rooms, storage rooms 3 and 5, basement storage room	D	D	No	300 SF	Glue daubs exposed and ceiling tiles with glue daubs debris on floor in two rooms by the boiler room (North and South end). Rooms 3 & 4 have water-damaged tiles at the exterior window walls. Material assumed to be ACBM; recommend sampling prior to disturbance
Cementitious Paneling	Gym kitchen by Water Spigot	D	N/A	N/A	N/A	Material abated October 2019.
Vibration Isolation Cloth	Attic	G	G	No	NA	Material assumed to be ACBM; recommend sampling prior to disturbance
Red Ceramic Floor Tile, Associated Grout & Adhesive	Bathrooms and showers	G	G	No	NA	Material assumed to be ACBM; recommend sampling prior to disturbance
White Ceramic Wall Tile, Associated Grout & Adhesive	Bathrooms and showers	G	G	No	NA	Material assumed to be ACBM; recommend sampling prior to disturbance (3 rd Floor Men's Room tiles starting to buckle at the wall, 1 tile was observed missing.)

Asbestos-Containing Building Material	Location	Previous Condition	Present Condition	Change in Condition (Yes/No)	Estimated Damaged Quantity	Comments
White Sink Undercoating	2 nd floor Rooms 5 (Financial Services Office), 10 (Payroll/Accounting Office), 3 rd floor Rooms 14, 12, 16, 18	G	G	No	NA	Additional locations identified April 2019. Room 18 added to list October 2019. Not Regulated by AHERA; for Informational Purposes Only. Material must be Managed/Disposed of as ACM. Maintain under O & M Plan. Material assumed to be ACBM; recommend sampling prior to disturbance
Black Sink Undercoating	Lunch Room	G	G	No	NA	Not Regulated by AHERA; for Informational Purposes Only. Material must be Managed/Disposed of as ACM. Maintain under O & M Plan. Material assumed to be ACBM; recommend sampling prior to disturbance
Red Terracotta Block & Associated Mortar	Throughout building	G	G	No	NA	Material assumed to be ACBM; recommend sampling prior to disturbance
Tan glazed Block Walls & Associated Mortar	2 nd and 3 rd floor corridors and stairwells	G	G	No	NA	Material assumed to be ACBM; recommend sampling prior to disturbance
Blackboards and Green Boards & Associated Adhesive	Throughout building	G	G	No	NA	Material assumed to be ACBM; recommend sampling prior to disturbance

Asbestos-Containing Building Material	Location	Previous Condition	Present Condition	Change in Condition (Yes/No)	Estimated Damaged Quantity	Comments
Tackboards & Associate Adhesive	Throughout building	G	G	No	NA	Material assumed to be ACBM; recommend sampling prior to disturbance
Brown Particle Board Paneling	Lower level storage room	G	G	No	NA	Material assumed to be ACBM; recommend sampling prior to disturbance
Gypsum Board & Associated Joint/Taping Compound	Throughout building, office partition walls	G	G	No	NA	Material assumed to be ACBM; recommend sampling prior to disturbance
White Interior Window Caulking Compounds	Throughout building	G	G	No	NA	Material assumed to be ACBM; recommend sampling prior to disturbance
Gray Interior Window Glazing Compounds	Basement	G	D	Yes	3 LF	Material assumed to be ACBM; recommend sampling prior to disturbance (Material damaged at the boiler room window, cracked throughout and falling off window.)
Brown 4" Cove Base & Associated Adhesive	Room 2 (meeting room 2) 2 nd Floor Ladies Bathroom	G	G	No	NA	2 nd Floor Ladies Bathroom added to list October 2019 Material assumed to be ACBM; recommend sampling prior to disturbance
White 4" Cove Base & Associated Adhesive	Gymnasium Shower Rooms	G	G	No	NA	Material assumed to be ACBM; recommend sampling prior to disturbance
Red 4" Cove Base & Associated Adhesive	Room 4 (Special Education Office)	G	G	No	NA	Material assumed to be ACBM; recommend sampling prior to disturbance

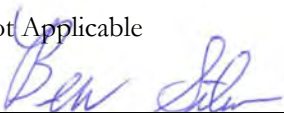
Asbestos-Containing Building Material	Location	Previous Condition	Present Condition	Change in Condition (Yes/No)	Estimated Damaged Quantity	Comments
Yellow Carpet Glue	2 nd floor Rooms 5 (Financial Services Office), 8 (Board Room), 9 (Superintendent's Office), 10 (Payroll/Accounting Office), 3 rd floor Rooms 13, 16, 17	IA	IA	No	NA	Carpet not present in Room 16. Evaluate during next triennial re-inspection Additional location identified April 2019. Material assumed to be ACBM; recommend sampling prior to disturbance
Tan with Brown Streak 12" x 12" Floor Tile & Associated Adhesive	3 rd floor Room 11, 12, 14 and 17	G	G	No	NA	Rooms 11, 12, and 17 added to list October 2019 Material assumed to be ACBM; recommend sampling prior to disturbance
White with Tan Specks 12" x 12" Floor Tile & Associated Adhesive	2 nd floor Room 1 (Technology Office) Break Room Bathroom Vestibule, 3 rd floor Room 18	G	G	No	NA	Break Room Bathroom Vestibule added to list October 2019 Material assumed to be ACBM; recommend sampling prior to disturbance
Gray 12" x 12" Floor Tile & Associated Mastic	Rooms 5 (Financial Services Office; carpet over 9" floor tiles), 6 (Asst. Superintendent's Office, carpet over 9" floor tiles), 10 (Payroll/Accounting Office, carpet over ?), lunch room	G	G	No	NA	Material assumed to be ACBM; recommend sampling prior to disturbance
Blue 12" x 12" Floor Tile & Associated Adhesive	Lunch room	G	G	No	NA	Material assumed to be ACBM; recommend sampling prior to disturbance

Asbestos-Containing Building Material	Location	Previous Condition	Present Condition	Change in Condition (Yes/No)	Estimated Damaged Quantity	Comments
Green 9" x 9" Floor Tile & Associated Mastic	2 nd Floor copy room (under carpet)	G	G	No	NA	Floor tile description revised to note correct size (9"x9" instead of 12"x12"). Material assumed to be ACM; recommend sampling prior to disturbance
Light-blue 12" x 12" Floor Tile & Associated Adhesive	2 nd floor Rooms 1 (Technology Office), 3 (Special Education Office), and 4 (under cabinet)	G	G	No	NA	Room 4 added to list October 2019. Material sampled & found to be non-ACM – April 2019. Sample IDs: 04-18-19-SMM-02A-C. The AMP will be updated to reflect this during the next triennial inspection. Material is adhered to ACM floor tile beneath. Material to be treated as ACM.
Bright-blue 12" x 12" Floor Tile & Associated Adhesive	2 nd floor Rooms 2 (meeting room 2) and 4 (Special Education office; partial carpet)	G	G	No	NA	Material assumed to be ACM; recommend sampling prior to disturbance
Black 9"x9" Floor Tile & Associated Mastic	2 nd and 3 rd floor corridors	G	G	No	NA	Material assumed to be ACM; recommend sampling prior to disturbance
Gray 9"x9" Floor Tile & Associated Mastic	Throughout former classrooms and offices (Located under carpet, 12" x 12" Floor Tile, or plywood in some locations)	G	G	No	NA	Visible Material in good condition. Material assumed to be ACM; recommend sampling prior to disturbance


Asbestos-Containing Building Material	Location	Previous Condition	Present Condition	Change in Condition (Yes/No)	Estimated Damaged Quantity	Comments
Brown 9"x9" Floor Tile & Associated Mastic	Throughout former classrooms and offices, Basement bathrooms by boiler room (Located under carpet, 12" x 12" Floor Tile, or plywood in some locations)	D	D	No	13 SF	Damaged floor tile observed in storage/bathroom south of boiler room (10 SF) and Room 3 (3 SF) Material in Rooms 3 & 4 (special education offices; under 12" floor tile and on stair landings) determined to be ACBM in April 2019. Sample IDs: 04-18-19-SMM-06A-C.
Vapor Barrier/Tar Under Wood Floor	2 nd floor Room 8 (Board Room), 3 rd floor Rooms 15 and 16, gymnasium, and lower level storage.	D	G	Yes	NA	Material covered in Basement. Inaccessible in Other Areas Material assumed to be ACBM; recommend sampling prior to disturbance
Brown Terrazzo Flooring	2 nd and 3 rd floor corridors and Room 9 (Superintendent's Office)	G	G	No	NA	Material assumed to be ACBM; recommend sampling prior to disturbance

Conditions: D = Damaged; G = Good; IA = Inaccessible; NA = Not Applicable

Surveillance conducted by: Ben Silverman



Scott Criscuolo
(Print name)


(Signature)

I, the LEA's Designated Person, have read and understood the findings noted above: _____ Date: _____

Section 4

Northville Elementary School

Six-Month AHERA Asbestos Periodic Surveillance

For Compliance With:
State of Connecticut Department of Public Health (CTDPH)
Asbestos-Containing Material in Schools Regulation
(Sections 19a-333-1 through 19a-333-13)
and
United States Environmental Protection Agency (EPA)
Asbestos Hazard Emergency Response Act (AHERA)
(Title 40 CFR Part 763, Subpart E)

Northville Elementary School
New Milford, Connecticut

October 2019



56 Quarry Road
Trumbull, CT 06611

Introduction

Fuss & O'Neill, Inc. (Fuss & O'Neill) was retained by New Milford Public Schools (the "Client") to conduct six-month periodic surveillances of previously identified asbestos-containing building materials (ACBM) at Northville Elementary School. This periodic surveillance was conducted in accordance with the requirements of the State of Connecticut Department of Public Health (CTDPH) Asbestos-Containing Material in Schools regulation (Section 19a-333-1 through 19a-333-13) and the United States Environmental Protection Agency (EPA) Asbestos Hazard Emergency Response Act (AHERA) regulation (Title 40 CFR Part 763, Subpart E).

On October 8, 2019, Ben Silverman and Scott Criscuolo of Fuss & O'Neill performed the periodic surveillance. Mr. Silverman and Mr. Criscuolo are CTDPH-licensed Asbestos Inspectors (refer to Appendix A). This surveillance was based on available information in the existing Asbestos Management Plan (AMP) for this building provided to Fuss & O'Neill by the Client.

Scope of Work

Periodic surveillance involves the visual reassessment of any ACBM or assumed ACBM in the AMP for Northville Elementary School. The date of the periodic surveillance, as well as the location of each area, was noted along with any changes of the ACBM condition. The results of this surveillance are listed in the periodic surveillance form included in this report.

Discussion

During this surveillance, no changes in the condition of the ACBM identified in the AMP were observed. Specific ACBM locations are listed in the attached periodic surveillance form.

AHERA regulations pertain to interior identified or assumed ACBM and limited exterior ACBM. AHERA regulations do include ACBM located on exterior porticos, covered walkways, and mechanical equipment used to condition interior building air. Suspect ACBM has not been previously identified in these areas at the Northville Elementary School; however, suspect asbestos-containing asphaltic roofing materials (built-up roofing, base flashing, sealants, waterproofing, etc.) were noted on the building exterior. In accordance with EPA National Emission Standards for Hazardous Air Pollutants (NESHAP), prior to disturbance, samples of these suspect ACBM must be collected and analyzed for asbestos content.

Conclusion

The previously identified ACBM were observed to be in similar condition to the most recent 6-month periodic surveillance.

If renovation or demolition activities are scheduled that will impact identified or suspect (assumed) ACBM, the ACBM or assumed ACBM must be removed by a CTDPH-licensed Asbestos Abatement

Contractor, or sampled to determine asbestos content prior to disturbance. This is a CTDPH Standards for Asbestos Abatement requirement, as well as an EPA NESHAP requirement.

Report prepared by Environmental Technicians Scott Criscuolo and Ben Silverman.

Reviewed by:



Eduardo Miguel Marques
Senior Environmental Analyst



Jared D. Smith, CSP
Senior Project Manager

6-Month Periodic Surveillance Form

Local Education Agency (LEA): New Milford Public Schools.
 Facility Address: Northville Elementary School, 22 Hipp Road, New Milford, CT 06776
 Date of Surveillance: October 8, 2019

ACBM 6-Month Surveillance Report

Asbestos-Containing Building Material	Location	Previous Condition	Present Condition	Change in Condition (Yes/No)	Estimated Damaged Quantity	Comments
Pipe Insulation & Associated Pipe Fitting Insulation	Within walls and pipe chases, boiler room	IA	IA/G	Yes	NA	Boiler Room added to list October 2019 Material assumed to be ACBM; recommend sampling prior to disturbance
Interior Boiler Components	Boiler room	IA	IA	No	NA	Material assumed to be ACBM; recommend sampling prior to disturbance
Red Fire Caulking Compounds	In boiler room on boiler	G	G	No	NA	Material assumed to be ACBM; recommend sampling prior to disturbance
White Textured Ceiling Paint	Front entrance corridor and exterior door overhangs 1, 5, 6, 7, 15, 16 & 17	G	G	No	NA	Material assumed to be ACBM; recommend sampling prior to disturbance
Cementitious Panels	Throughout at window systems (interior below windows) – especially at interior courtyard	G	G	No	NA	Material assumed to be ACBM; recommend sampling prior to disturbance Material appears to be a combination of metal panels or of a carbon fiber-like composition. Recommend further investigation during next triannual re-inspection
Brown Interior Window Caulking	Throughout exterior window systems	G	G	No	NA	Material assumed to be ACBM; recommend sampling prior to disturbance
Black 4" Angle Cove Base & Associated Adhesive	Gymnasium	G	G	No	NA	Material assumed to be ACBM; recommend sampling prior to disturbance

Asbestos-Containing Building Material	Location	Previous Condition	Present Condition	Change in Condition (Yes/No)	Estimated Damaged Quantity	Comments
Brown/Orange 4" Cove Base & Associated Adhesive	Throughout building – corridors, classrooms, offices, storage rooms, toilet rooms, library, main office, principal's office, teacher's room, storage rooms, kitchen, and cafeteria	G	G	No	NA	Material assumed to be ACM; recommend sampling prior to disturbance. Approximately two LF of cove base missing in classroom 3 coat rack area. Material less than three LF and falls under O&M Plan
Fire Door Insulation	Throughout building, potentially in fire door cores	G	G	No	NA	Not Regulated by AHERA; for Informational Purposes Only. Material must be Managed/Disposed of as ACM. Maintain under O & M Plan
Gypsum Board & Associated Joint/Taping Compound	Throughout building – corridors, classrooms, offices, storage rooms, toilet rooms, library, main office, principal's office, teacher's room, storage rooms, kitchen, boiler room, and cafeteria	G	G	No	NA	Material assumed to be ACM; recommend sampling prior to disturbance
Blackboards & Associated Adhesive	Throughout building – corridors, classrooms, offices, toilet rooms, library, main office, principal's office, teacher's room, kitchen, and cafeteria	G	G	No	NA	Material assumed to be ACM; recommend sampling prior to disturbance
Tackboards & Associated Adhesive	Throughout building – corridors, classrooms, offices, toilet rooms, library, main office, principal's office, teacher's room, kitchen, and cafeteria	G	G	No	NA	Material assumed to be ACM; recommend sampling prior to disturbance
Adhesive associated with Mirrors	Bathrooms	IA	IA	No	NA	Material assumed to be ACM; recommend sampling prior to disturbance

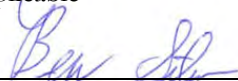
Asbestos-Containing Building Material	Location	Previous Condition	Present Condition	Change in Condition (Yes/No)	Estimated Damaged Quantity	Comments
Tan Ceramic Floor Tile, Associated Grout & Adhesive	Bathrooms	G	G	No	NA	Material assumed to be ACBM; recommend sampling prior to disturbance
Yellow Glue associated with 12" x 12" Floor Tile	Throughout building – corridors, classrooms, offices, storage rooms, toilet rooms, library, main office, principal's office, teacher's room, storage rooms, kitchen, and cafeteria	IA	IA	No	NA	Material assumed to be ACBM; recommend sampling prior to disturbance Associated Floor Tile should be considered contaminated with ACBM if disturbed
Black Mastic associated with 12" x 12" Floor Tile	Throughout building – corridors, classrooms, offices, storage rooms, toilet rooms, library, main office, principal's office, teacher's room, storage rooms, kitchen, and cafeteria	IA	IA	No	NA	Material assumed to be ACBM; recommend sampling prior to disturbance Associated Floor Tile should be considered contaminated with ACBM if disturbed
Orange 4" x 4" Quarry Tile & Associated Grout & Adhesive	Kitchen	G	G	No	NA	Material assumed to be ACBM; recommend sampling prior to disturbance
Stage Light Electrical Wiring	Cafeteria	G	G	No	NA	Not Regulated by AHERA; for Informational Purposes Only. Material must be Managed/Disposed of as ACM. Maintain under O & M Plan Material assumed to be ACBM; recommend sampling prior to disturbance

Asbestos-Containing Building Material	Location	Previous Condition	Present Condition	Change in Condition (Yes/No)	Estimated Damaged Quantity	Comments
Black Sink Undercoating	Throughout classrooms, teacher's room	G	G	No	NA	Not Regulated by AHERA; for Informational Purposes Only. Material must be Managed/Disposed of as ACM. Maintain under O & M Plan. Material assumed to be ACBM; recommend sampling prior to disturbance.
Grey Sink Undercoating	Main Office Copy/Staff Room	G	G	No	NA	Material newly identified during April 2019 surveillance. Not Regulated by AHERA; for Informational Purposes Only. Material must be Managed/Disposed of as ACM. Maintain under O & M Plan. Material assumed to be ACBM; recommend sampling prior to disturbance.
White Sink Undercoating	Nurse's Room	G	G	No	NA	Material identified during April 2019 surveillance. Material previously identified as Black Sink Undercoating. Not Regulated by AHERA; for Informational Purposes Only. Material must be Managed/Disposed of as ACM. Maintain under O & M Plan. Material assumed to be ACBM; recommend sampling prior to disturbance.
Vapor Barrier/Tar Under Wood Flooring	Gymnasium, Stage in Cafeteria	IA	IA	No	NA	Additional location identified April 2019. Material assumed to be ACBM; recommend sampling prior to disturbance.

Asbestos-Containing Building Material	Location	Previous Condition	Present Condition	Change in Condition (Yes/No)	Estimated Damaged Quantity	Comments
Carpet Glue	Throughout carpeted areas of building – library, classrooms, offices, and conference rooms	G	G	No	NA	Samples collected from Main Office and Main Lobby. Sample materials were determined to be Non-ACBM. Sample IDs: 2-20-PB-08A, 2-20-PB-08B, 2-20-PB-09A, and 2-20-PB-09B. Materials to be confirmed homogenous during subsequent surveillances

Conditions: D = Damaged; G = Good; IA = Inaccessible; NA = Not Applicable

Surveillance conducted by: Ben Silverman



Scott Criscuolo



(Print name)

(Signature)

I, the LEA's Designated Person, have read and understood the findings noted above: _____ Date: _____

Section 5

Sarah Noble Intermediate School

Six-Month AHERA Asbestos Periodic Surveillance

For Compliance With:
State of Connecticut Department of Public Health (CTDPH)
Asbestos-Containing Material in Schools Regulation
(Sections 19a-333-1 through 19a-333-13)
and
United States Environmental Protection Agency (EPA)
Asbestos Hazard Emergency Response Act (AHERA)
(Title 40 CFR Part 763, Subpart E)

Sarah Noble Intermediate School
New Milford, Connecticut

October 2019



56 Quarry Road
Trumbull, CT 06611

Introduction

Fuss & O'Neill, Inc. (Fuss & O'Neill) was retained by New Milford Public Schools (the "Client") to conduct six-month periodic surveillances of previously identified asbestos-containing building materials (ACBM) at Sarah Noble Intermediate School. This periodic surveillance was conducted in accordance with the requirements of the State of Connecticut Department of Public Health (CTDPH) Asbestos-Containing Material in Schools regulation (Section 19a-333-1 through 19a-333-13) and the United States Environmental Protection Agency (EPA) Asbestos Hazard Emergency Response Act (AHERA) regulation (Title 40 CFR Part 763, Subpart E).

On October 9, 2019, James Blum and Scott Criscuolo of Fuss & O'Neill performed the periodic surveillance. Mr. Silverman and Mr. Criscuolo are CTDPH-licensed Asbestos Inspectors (refer to *Appendix A*). This surveillance was based on available information in the existing Asbestos Management Plan (AMP) for this building provided to Fuss & O'Neill by the Client.

Scope of Work

Periodic surveillance involves the visual reassessment of any ACBM or assumed ACBM in the AMP for Sarah Noble Intermediate School. The date of the periodic surveillance, as well as the location of each area, was noted along with any changes of the ACBM condition. The results of this surveillance are listed in the periodic surveillance form included in this report.

Discussion

During this surveillance, minor changes in the condition of the ACBM identified in the AMP were observed. Specific ACBM locations are listed in the attached periodic surveillance form.

AHERA regulations pertain to interior identified or assumed ACBM and limited exterior ACBM. AHERA regulations do include ACBM located on exterior porticos, covered walkways, and mechanical equipment used to condition interior building air. Suspect ACBM has not been previously identified in these areas at the Sarah Noble Intermediate School; however, suspect asbestos-containing asphaltic roofing materials (built-up roofing, base flashing, sealants, waterproofing, etc.) were noted on the building exterior. In accordance with EPA National Emission Standards for Hazardous Air Pollutants (NESHAP), prior to disturbance, samples of these suspect ACBM must be collected and analyzed for asbestos content.

Conclusion

The majority of the previously identified ACBM were observed to be in similar condition to the most recent 6-month periodic surveillance with the exception of pipe fitting insulation observed to be damaged in the mechanical room.

If renovation or demolition activities are scheduled that will impact identified or suspect (assumed) ACBM, the ACBM or assumed ACBM must be removed by a CTDPH-licensed Asbestos Abatement

Contractor, or sampled to determine asbestos content prior to disturbance. This is a CTDPH Standards for Asbestos Abatement requirement, as well as an EPA NESHAP requirement.

Report prepared by Environmental Technicians Scott Criscuolo and Ben Silverman.

Reviewed by:



Eduardo Miguel Marques
Senior Environmental Analyst



Jared D. Smith, CSP
Senior Project Manager

6-Month Periodic Surveillance Form

Local Education Agency (LEA): New Milford Public Schools.

Facility Address: Sarah Noble Intermediate School, 25 Sunny Valley Road, New Milford, CT 06776

Date of Surveillance: October 9, 2019

ACBM 6-Month Surveillance Report

Asbestos-Containing Building Material	Location	Previous Condition	Present Condition	Change in Condition (Yes/No)	Estimated Damaged Quantity	Comments
Brown Mastic Associated with Blackboards and Tackboards – (material enclosed within sheetrock walls)	Classrooms and Corridors	IA	IA	No	NA	Material assumed to be ACBM; recommend sampling prior to disturbance
Adhesive Associated with Blackboards & Tackboards	Classrooms	IA	IA	No	NA	Material assumed to be ACBM; recommend sampling prior to disturbance
White Fire Door Insulation	Throughout Building	IA	IA	No	NA	Not Regulated by AHERA; for Informational Purposes Only. Material must be Managed/Disposed of as ACM. Maintain under O & M Plan Material assumed to be ACBM; recommend sampling prior to disturbance. Door identified at Gym by Stairwell 7 was determined to contain 5% Vermiculite (Sample IDs: 0124BH-01A, 0124BH-01B, 0124BH-01C.)

Asbestos-Containing Building Material	Location	Previous Condition	Present Condition	Change in Condition (Yes/No)	Estimated Damaged Quantity	Comments
White Pipe Insulation	Tunnels and Wall Cavities	IA	IA	No	NA	Material assumed to be ACBM; recommend sampling prior to disturbance
White Mudded Pipe Fitting Insulation	Boiler Room (Mech. Room 197) – on boilers, 2 fittings on each	G	D	Yes	1 EA	There is damage on 1 of the elbows. Material assumed to be ACBM; recommend sampling prior to disturbance
White Roping associated with Old Water Tank 1' Diameter Pipe Connector	Boiler Room (Mech. Room 197; located to left of stairs coming down from door)	D	D	No	4 LF	Material Damaged at the Boiler Room Old Water Tank Material assumed to be ACBM; recommend sampling to determine ACBM content
White Insulation Associated with Old Water Tank	Boiler Room (Mech. Room 197; located to left of stairs coming down from door)	SD	SD	No	20 SF	Material Damaged at the Boiler Room Old Water Tank Material assumed to be ACBM; recommend sampling to determine ACBM content
Cloth Wrap on Ducts	Boiler Room (Mech. Room 197), Throughout Building Within Walls and Plenum Space	G	G	No	NA	Material assumed to be ACBM; recommend sampling prior to disturbance
Duct Insulation Glue	Boiler Room (Mech. Room 197), Throughout Building Within Walls and Plenum Space	IA	IA	No	NA	Material assumed to be ACBM; recommend sampling prior to disturbance
Gray Duct Sealant	Throughout Building Within Walls and Plenum Space	IA	IA	No	NA	Material assumed to be ACBM; recommend sampling prior to disturbance

Asbestos-Containing Building Material	Location	Previous Condition	Present Condition	Change in Condition (Yes/No)	Estimated Damaged Quantity	Comments
Interior Boiler Components	Boiler Room (Mech. Room 197)	IA	IA	No	NA	Material assumed to be ACBM; recommend sampling prior to disturbance
White 12" x 12" Floor Tiles (Multicolor Pattern) & Associated Adhesive	Classrooms and Corridors	G	G	No	NA	Floor Tile is starting to come loose in Classroom 233. Material assumed to be ACBM; recommend sampling prior to disturbance
Blue 12" x 12" Floor Tiles (Multicolor Pattern) & Associated Adhesive	Classrooms and Corridors	G	G	No	NA	Material assumed to be ACBM; recommend sampling prior to disturbance
Multicolor Pattern 12" x 12" Floor Tiles (Blue-Yellow- Red-Green- Black) & Associated Adhesive	Classrooms and Corridors	G	G	No	NA	Material assumed to be ACBM; recommend sampling prior to disturbance
White with Blue Specks 12" x 12" Floor Tiles & Associated Adhesive	Cafeteria	G	G	No	NA	Material assumed to be ACBM; recommend sampling prior to disturbance
Tan with Tan and Black/Dark Brown Streaks 12" x 12" Floor Tiles & Associated Adhesive	Ramp Loading at Cafeteria	G	G	No	NA	Material assumed to be ACBM; recommend sampling prior to disturbance
Yellow Carpet Glue	Room 136,159, 161,163, 163A, 173, 205, 205A, 205C, 205D, 206, 206A, Media Center and Main Offices. Newly identified carpeted areas	IA	IA	No	NA	Carpeting removed from rooms 160 A, 160B, 160C, and 160D and replaced with white & blue 12" x 12" Floor Tile. Observed and assumed to contain yellow carpet glue – inventory updated. Material assumed to be ACBM; recommend sampling prior to disturbance

Asbestos-Containing Building Material	Location	Previous Condition	Present Condition	Change in Condition (Yes/No)	Estimated Damaged Quantity	Comments
Black Paper/Mastic	Gymnasiums underneath Hardwood Floors (Gymnasium 112 & Multi-purpose Room 200)	IA	IA	No	NA	Material assumed to be ACBM; recommend sampling prior to disturbance
Textured Blue Floor Coating	Kitchen, Custodial Closet 101A	G	G	No	NA	Material assumed to be ACBM; recommend sampling prior to disturbance
Gray Ceramic Floor Tiles & Associated Grout & Adhesive	Bathrooms and Custodial Closets	G	G	No	NA	Material assumed to be ACBM; recommend sampling prior to disturbance
Adhesive associated with Gray Rubber Stair treads	Stairwells, interior corridor stair at elevator	IA	IA	No	NA	Material assumed to be ACBM; recommend sampling prior to disturbance
Blue Cove Base & Associated Adhesive	Classrooms and Corridors	G	G	No	NA	Samples collected from Corridor outside Room 234 and Room 231 by Door. Sampled materials were determined to be Non-ACBM. Sample IDs: 2-20-PB-06A, 2-20-PB-06B, 2-20-PB-07A, and 2-20-PB-07B. Materials to be confirmed homogenous during subsequent surveillances
Gray Ceramic Cove Base & Associated Grout & Adhesive	Bathrooms and Custodial Rooms	G	G	No	NA	Material assumed to be ACBM; recommend sampling prior to disturbance
Wall Paper (Tan Canvas Wall Cover and associated Adhesive)	Rooms 136, 136A, 206, 206A, and Media Center	G	G	No	NA	Additional locations identified April 2019. Material assumed to be ACBM; recommend sampling prior to disturbance

Asbestos-Containing Building Material	Location	Previous Condition	Present Condition	Change in Condition (Yes/No)	Estimated Damaged Quantity	Comments
White Gypsum Board & Joint/Taping Compound	Throughout Building	G	G	No	NA	Material assumed to be ACBM; recommend sampling prior to disturbance
Gray Plaster Wall	Boiler Room & Records	D	D	No	20 SF	Material Damaged at the Boiler Room & Records Material assumed to be ACBM; recommend sampling to determine ACBM content
White 2" x 2" Suspended Ceiling Tiles	Staff 127, 131A, 136, 136A, 160, 160A, 160C, 160D, 163, 163A, Bathrooms, Media Center, Kitchen and Cafeteria	G	G	No	NA	Additional locations identified April 2019. Material assumed to be ACBM; recommend sampling prior to disturbance
White 2" x 4" Suspended Ceiling Tiles	Throughout Building	G	G	No	NA	Material assumed to be ACBM; recommend sampling prior to disturbance
White Sink Undercoating	Throughout Classrooms	G	G	No	NA	Not Required by AHERA; for informational purposes only Material must be Managed and Disposed of as ACM Prior to Disturbance. Material assumed to be ACBM; recommend sampling prior to disturbance

Asbestos-Containing Building Material	Location	Previous Condition	Present Condition	Change in Condition (Yes/No)	Estimated Damaged Quantity	Comments
Grey Sink Undercoating	Art Rooms 194, 195 & 196 (double sinks); Rooms 140, 173 & 208 (single sinks)	G	G	No	NA	Material newly identified April 2019. Not Required by AHERA; for informational purposes only Material must be Managed and Disposed of as ACM Prior to Disturbance. Material assumed to be ACBM; recommend sampling prior to disturbance
Red Firestop Caulk	Throughout Building	G	G	No	NA	Material assumed to be ACBM; recommend sampling prior to disturbance
Tan Backsplash Glue Daubs	Grade 3 Classrooms (Formerly Science Rooms)	IA	IA	No	NA	Material assumed to be ACBM; recommend sampling prior to disturbance
Gray Interior Column Caulking	Throughout Building	G	G	No	NA	Material assumed to be ACBM; recommend sampling prior to disturbance
Gray Floor Leveling Material	Throughout Building	IA	IA	No	NA	Material assumed to be ACBM; recommend sampling prior to disturbance
White with Yellow, Brown, Black Ceramic Wall Tile & Associated Grout & Adhesive	Kitchen	G	G	No	NA	Material assumed to be ACBM; recommend sampling prior to disturbance
Stage Curtain	Stage	G	G	No	NA	Not Required by AHERA; for informational purposes only Material must be Managed and Disposed of as ACM Prior to Disturbance. Material assumed to be ACBM; recommend sampling prior to disturbance



Conditions: D = Damaged; G = Good; IA = Inaccessible; NA = Not Applicable; SD = Significant Damage

Surveillance conducted by: James Blum

James Blum

Scott Criscuolo

Scott Criscuolo

(Print name)

(Signature)

I, the LEA's Designated Person, have read and understood the findings noted above: _____ Date: _____

Section 6

Schaghticoke Middle School

Six-Month AHERA Asbestos Periodic Surveillance

For Compliance With:
State of Connecticut Department of Public Health (CTDPH)
Asbestos-Containing Material in Schools Regulation
(Sections 19a-333-1 through 19a-333-13)
and
United States Environmental Protection Agency (EPA)
Asbestos Hazard Emergency Response Act (AHERA)
(Title 40 CFR Part 763, Subpart E)

Schaghticoke Middle School
New Milford, Connecticut

October 2019



56 Quarry Road
Trumbull, CT 06611

Introduction

Fuss & O'Neill, Inc. (Fuss & O'Neill) was retained by New Milford Public Schools (the "Client") to conduct six-month periodic surveillances of previously identified asbestos-containing building materials (ACBM) at Schaghticoke Middle School. This periodic surveillance was conducted in accordance with the requirements of the State of Connecticut Department of Public Health (CTDPH) Asbestos-Containing Material in Schools regulation (Section 19a-333-1 through 19a-333-13) and the United States Environmental Protection Agency (EPA) Asbestos Hazard Emergency Response Act (AHERA) regulation (Title 40 CFR Part 763, Subpart E).

On October 8, 2019, Ben Silverman and Scott Criscuolo of Fuss & O'Neill performed the periodic surveillance. Mr. Silverman and Mr. Criscuolo are CTDPH-licensed Asbestos Inspectors (refer to *Appendix A*). This surveillance was based on available information in the existing Asbestos Management Plan (AMP) for this building provided to Fuss & O'Neill by the Client.

Scope of Work

Periodic surveillance involves the visual reassessment of any ACBM or assumed ACBM in the AMP for Schaghticoke Middle School. The date of the periodic surveillance, as well as the location of each area, was noted along with any changes of the ACBM condition. The results of this surveillance are listed in the periodic surveillance form included in this report.

Discussion

During this surveillance, minor changes in the condition of the ACBM identified in the AMP were observed. Specific ACBM locations are listed in the attached periodic surveillance form.

Black Composite Laboratory Countertops, Desktops, and Test Tube Racks were observed in several locations not listed. This information should be updated during the next triennial re-inspection.

Materials observed during this surveillance that are not present on the list and are to be evaluated during the next triennial re-inspection are:

- Cemetitious boards in fume hoods, observed in Rooms 244 – 251
- Brown Mottled 12" x 12" Floor Tile & Associated Adhesive observed in Rooms 209 and 210

Green 12" x 12" Floor Tile & Associated Mastic does not exist and should be removed from the list during the next triennial re-inspection

AHERA regulations pertain to interior identified or assumed ACBM and limited exterior ACBM. AHERA regulations do include ACBM located on exterior porticos, covered walkways, and mechanical equipment used to condition interior building air. Suspect ACBM has not been previously identified in these areas at the Schaghticoke Middle School; however, suspect asbestos-containing asphaltic roofing

materials (built-up roofing, base flashing, sealants, waterproofing, etc.) were noted on the building exterior. In accordance with EPA National Emission Standards for Hazardous Air Pollutants (NESHAP), prior to disturbance, samples of these suspect ACM must be collected and analyzed for asbestos content.

Conclusion

The majority of the previously identified ACM were observed to be in similar condition to the most recent 6-month periodic surveillance with the exception of damaged cove base/adhesive as well as damaged vinyl and ceramic floor tile identified in multiple locations.

If renovation or demolition activities are scheduled that will impact identified or suspect (assumed) ACM, the ACM or assumed ACM must be removed by a CTDPH-licensed Asbestos Abatement Contractor, or sampled to determine asbestos content prior to disturbance. This is a CTDPH Standards for Asbestos Abatement requirement, as well as an EPA NESHAP requirement.

Report prepared by Environmental Technicians Scott Criscuolo and Ben Silverman.

Reviewed by:



Eduardo Miguel Marques
Senior Environmental Analyst



Jared D. Smith, CSP
Senior Project Manager

6-Month Periodic Surveillance Form

Local Education Agency (LEA): New Milford Public Schools
 Facility Address: Schaghticoke Middle School, 23 Hipp Road, New Milford, CT 06776
 Date of Surveillance: October 8, 2019

ACBM 6-Month Surveillance Report

Asbestos-Containing Building Material	Location	Previous Condition	Present Condition	Change in Condition (Yes/No)	Estimated Damaged Quantity	Comments
Pipe Fitting Insulation	Boiler Room, Air handler Rooms 11 & 12 (across from room 207), 13 & 14 (behind room 201), 15 & 16/chiller pump room (near room 222, behind copy room), and corridor by media center	G	G	No	NA	Material was not observed in Boiler Room (Material may exist within plastic fitting covers)
12" x 12" Older Tan Floor Tile & Associated Mastic	Men's Faculty Bathroom by 106, Rooms 107, 109, 112/114, Unisex Bathroom by 114, 117, Staff Lounge 122, 188, 189, 192, Custodial Closet by 192, Custodial Office, Cafeteria Storage Room, Gymnasium 123/125, Nurse's Office 197 exam room	D	D	No	12 LF	Newly identified in Men's Faculty Bathroom by 106, Room 107, Unisex Bathroom by 114, Staff Lounge 122, Custodial Closet by 192, and Custodial Office in October 2019. Additional location identified April 2019. Approximately 6 LF of tile broken and loose at threshold of two doorways to Gymnasium Storage Room. Observed pieces of broken tile along wall and underneath gymnasium equipment. Recommend cleanup and or abatement of damaged material. Maintain under O&M Plan to reduce further damage

Asbestos-Containing Building Material	Location	Previous Condition	Present Condition	Change in Condition (Yes/No)	Estimated Damaged Quantity	Comments
Pump Insulation	Air handler room 15 & 16 (behind room 201)	G	G	No	NA	Material assumed to be ACBM; recommend sampling prior to disturbance.
Black Window Sills	Throughout building	G	G	No	NA	Material assumed to be ACBM; recommend sampling prior to disturbance.
Tackboard/Blackboard Adhesives	Throughout building	IA	IA	No	NA	Material assumed to be ACBM; recommend sampling prior to disturbance.
Vapor Barriers/Tar Paper Located Below Wood Flooring	Gymnasium and multi-purpose room	IA	IA	No	NA	Material assumed to be ACBM; recommend sampling prior to disturbance.
Gypsum Board & Joint/Taping Compound	Throughout building	G	G	No	NA	Samples collected from Room 209 and Room 210 in May 2018. Sampled materials were determined to be Non-ACBM. Sample IDs: 20180531GI-05A, 20180531GI-05B, 20180531GI-05C, 20180531GI-06A, 20180531GI-06B, and 20180531GI-06C. Materials to be confirmed homogenous during subsequent surveillances

Asbestos-Containing Building Material	Location	Previous Condition	Present Condition	Change in Condition (Yes/No)	Estimated Damaged Quantity	Comments
Cove Base (Black, Blue, Brown, Dark Gray, Gray) & Associated Adhesive	Throughout building	F	D	Yes	10 SF 91 LF	<p>Cove base missing with exposed adhesive: (11) LF in Room 104, (10) LF in Room 102, (12) LF in Room 100, (3) LF in Room 106, (12) LF in Gymnasium, (7) LF in Media Equipment Room, (6) LF in Room 123, (7) LF in Room 150, (9) LF in Room 211, (3) LF in Room 225, (2) LF in Room 227, (1) LF in Room 250, (1) LF in Room 251</p> <p>Band Room 112/114 – damaged/missing cove base on risers; adhesive exposed (10 SF). Rooms 224 & 226 – missing cove base under counters; adhesive exposed (7 LF).</p> <p>Previous damage in 2nd Floor Custodial Office by Elevator not observed. Samples of Gray Cove Base and Adhesive collected from Room 209 and Room 210 in May 2018.</p> <p>Sampled materials were determined to be Non-ACBM.</p> <p>Sample IDs: 20180531GI-03A, 20180531GI-03B, 20180531GI-04A, and 20180531GI-04B,</p> <p>Materials to be confirmed homogenous during subsequent surveillances</p>
Interior Boiler Components	Boiler Room	IA	IA	No	NA	Material assumed to be ACBM; recommend sampling prior to disturbance.

Asbestos-Containing Building Material	Location	Previous Condition	Present Condition	Change in Condition (Yes/No)	Estimated Damaged Quantity	Comments
Blue 12" x 12" Floor Tile & Associated Adhesive	2 nd Floor Copy Room, Rooms 100, 103, 105, 110, 110A, 141, 143 – 155, 175, 176, 177, 196, 198, 201, 202, 204A, 204B, 204 – 208, 209A - B, 211 – 213, 217 – 232, Men's Restroom opposite 205	G	D	Yes	16 LF	Tile in Room 142 and 230 re-identified during October 2019 surveillance Rooms 202, 204, 204A, 204B and 2 nd Floor Copy Room added to list October 2019. (16) LF Cracked in Room 105 Additional locations identified April 2019. Material assumed to be ACBM; recommend sampling prior to disturbance.
Bright Blue 12" x 12" Floor Tile & Associated Adhesive	Room 108	G	G	No	NA	Material assumed to be ACBM; recommend sampling prior to disturbance.
Dark Blue 12" x 12" Floor Tile & Associated Adhesive	Media Office	G	G	No	NA	Material assumed to be ACBM; recommend sampling prior to disturbance.
Light Blue 12" x 12" Floor Tile & Associated Adhesive	Rooms 100, 102, 104, 116, 118, 142, 198, 216, 241, 244, 247, 250, 1 st Floor Corridor, Media & Copy Room, Boys' Restroom by 208, Women's Restroom by 208, Stage	G	D	Yes	10 LF	Tile in Rooms 246 and 249 re-identified during October 2019 surveillance Room 142 added to list October 2019 (10) LF cracked in 1 st Floor Corridor by Room 149 Evaluate tile in Women's Restroom by 208 during next triennial re-inspection. Tile at that location appears different. Additional locations identified April 2019. Material assumed to be ACBM; recommend sampling prior to disturbance.
Green 12" x 12" Floor Tile & Associated Mastic	2 nd Floor Corridor	G	G	No	NA	Material does not exist. Delete from list during next triennial re-inspection. Material assumed to be ACBM; recommend sampling prior to disturbance.

Asbestos-Containing Building Material	Location	Previous Condition	Present Condition	Change in Condition (Yes/No)	Estimated Damaged Quantity	Comments
Light Blue/Green 12" x 12" Floor Tile & Associated Mastic	Rooms 214, 242, 230, 243, 246, 249, Cafeteria, Kitchen, Stairwells, 2 nd Floor Corridor, Custodial Closet by 109, Music 114 Practice Room, Media Equipment Room	G	D	Yes	3 SF	Damaged in Kitchen, missing tile, exposed mastic. Rooms 242, 246, 249, Media Equipment Room added to list October 2019 Additional locations identified April 2019. Material assumed to be ACBM; recommend sampling prior to disturbance.
Pink 12" x 12" Floor Tile & Associated Adhesive	Rooms 215, 245, 248, 251	G	G	No	NA	Material assumed to be ACBM; recommend sampling prior to disturbance.
Carpet Adhesive	Rooms 101, 106, 120, 174, 181, 183, 203, 204, 204A-B, 209, 210, Media & Media Computer Room	IA	IA	No	NA	Samples of Carpet Adhesive collected from Room 209 and Room 210 in May 2018. Sampled materials were determined to be Non-ACBM. Sample IDs: 20180531GI-02A, and 20180531GI-02B Materials to be confirmed homogenous during subsequent surveillances
Adhesive associated with Rubber Flooring	Multi-Purpose Room	IA	IA	No	NA	Material assumed to be ACBM; recommend sampling prior to disturbance.
Blue Ceramic Tile & Associated Grout & Thin Set	Boys' Restroom by 241, Girls' Restroom by 243	G	G	No	NA	Material assumed to be ACBM; recommend sampling prior to disturbance.
1" Yellow Ceramic Floor Tile & Associated Grout & Thin set	Boys' Restroom by 205, Girls' Restroom by Room 207, Boys' Locker Room, Girls' Locker Room, Boys' Restroom by 108, Girls' Restroom by 110A, Boys' Restroom by 114, Girls' Restroom by 195	D	G	Yes	< 1 SF	Additional locations identified April 2019. Damaged/missing tiles in Boys' Locker Room <3 SF. Material assumed to be ACBM; recommend sampling prior to disturbance.

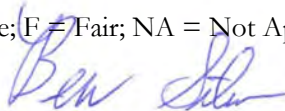
Asbestos-Containing Building Material	Location	Previous Condition	Present Condition	Change in Condition (Yes/No)	Estimated Damaged Quantity	Comments
2' x 4' Suspended Ceiling Tile	Rooms 100, 101, 103, 105, 106, 108 – 110, 110A, 112, 116 -118, 120, 141 – 155, 174 – 176, 181, 183, 188, 189, 192, 196, 198, 201, 203 – 232, 241, 243 – 251, 2 nd Floor Corridor, 1 st Floor Corridor, Boys Restroom by 208, Boys Restroom by 241, Girls' Restroom by 207, Girls' Restroom by 243, Custodian Closet, HVAC Room	G	G	No	NA	Broken tile in Room 112 Material assumed to be ACBM; recommend sampling prior to disturbance.
2' x 2' Suspended Ceiling Tile	Room 183	G	G	No	NA	Material assumed to be ACBM; recommend sampling prior to disturbance.
Gray Sink Undercoating	Rooms 101, 142, 181, 207, 212-217	G	G	No	NA	Additional location identified April 2019. Not Regulated by AHERA; for Informational Purposes Only. Material must be Managed/Disposed of as ACM. Maintain under O & M Plan. Material assumed to be ACBM; recommend sampling prior to disturbance.
Black Sink Undercoating	Room 110, Main Office kitchenette, Nurse's Office 197	G	G	No	NA	Material newly identified April 2019. Not Regulated by AHERA; for Informational Purposes Only. Material must be Managed/Disposed of as ACM. Maintain under O & M Plan. Material assumed to be ACBM; recommend sampling prior to disturbance.

Asbestos-Containing Building Material	Location	Previous Condition	Present Condition	Change in Condition (Yes/No)	Estimated Damaged Quantity	Comments
Black Composite Laboratory Countertops	Rooms 214, 215, 216, 244-249	G	G	No	NA	Additional locations identified April 2019. Not Regulated by AHERA; for Informational Purposes Only. Material must be Managed/Disposed of as ACM. Maintain under O & M Plan. Material assumed to be ACBM; recommend sampling prior to disturbance.
Black Composite Laboratory Desktops	Rooms 214, 215 & 216	G	G	No	NA	Additional location identified April 2019. Not Regulated by AHERA; for Informational Purposes Only. Material must be Managed/Disposed of as ACM. Maintain under O & M Plan. Material assumed to be ACBM; recommend sampling prior to disturbance.
Black Composite Laboratory Test Tube Rack	Rooms 215 & 216	G	G	No	NA	Not Regulated by AHERA; for Informational Purposes Only. Material must be Managed/Disposed of as ACM. Maintain under O & M Plan. Material assumed to be ACBM; recommend sampling prior to disturbance.
Interior & Exterior Cementitious Paneling (under windows)	Cafeteria	G	G	No	NA	Exterior Panels are Not Regulated by AHERA; for Informational Purposes Only. Material must be Managed/Disposed of as ACM. Maintain under O & M Plan. Material assumed to be ACBM; recommend sampling prior to disturbance.
White Interior Window Glazing Compounds	Room 154, 208 – 211, 212 – 217, 224 231, 241 – 251, Cafeteria	G	G	No	NA	Material assumed to be ACBM; recommend sampling prior to disturbance.

Asbestos-Containing Building Material	Location	Previous Condition	Present Condition	Change in Condition (Yes/No)	Estimated Damaged Quantity	Comments
White Interior Column Caulking Compounds	Throughout building	G	G	No	NA	Material assumed to be ACBM; recommend sampling prior to disturbance.

Conditions: D = Damaged; G = Good; IA = Inaccessible; F = Fair; NA = Not Applicable

Surveillance conducted by: Ben Silverman



Scott Criscuolo



(Print name)

(Signature)

I, the LEA's Designated Person, have read and understood the findings noted above: _____ Date: _____

Appendix A

Fuss & O'Neill CTDPH Asbestos Inspector Licenses and EPA Accreditations

Dear BENJAMIN L SILVERMAN,

Attached you will find your validated certificate for the coming year. Should you have any questions about your certificate renewal, please do not hesitate to write or call:

Department of Public Health
P.O. Box 340308
M.S.#12MQA
Hartford, CT 06134-0308

(860) 509-7603
opl.c.dph@ct.gov
www.ct.gov/dph/license

Sincerely,

RENÉE D. COLEMAN-MITCHELL, MPH, COMMISSIONER
DEPARTMENT OF PUBLIC HEALTH

EMPLOYER'S COPY

STATE OF CONNECTICUT
DEPARTMENT OF PUBLIC HEALTH

NAME
BENJAMIN L SILVERMAN

VALIDATION NO. 03-768866	CERTIFICATE NO. 000349	CURRENT THROUGH 08/31/20
------------------------------------	----------------------------------	------------------------------------

PROFESSION
ASBESTOS CONSULTANT-INSP/MGMT PLANNER

SIGNATURE _____
COMMISSIONER _____

STATE OF CONNECTICUT
DEPARTMENT OF PUBLIC HEALTH

PURSUANT TO THE PROVISIONS OF THE GENERAL STATUTES OF CONNECTICUT

THE INDIVIDUAL NAMED BELOW IS CERTIFIED
BY THIS DEPARTMENT AS A

ASBESTOS CONSULTANT-INSP/MGMT PLANNER

BENJAMIN L SILVERMAN

CERTIFICATE NO.
000349

CURRENT THROUGH
08/31/20

VALIDATION NO.
03-768866

SIGNATURE _____

COMMISSIONER _____

INSTRUCTIONS:

1. Detach and sign each of the cards on this form
2. Display the large card in a prominent place in your office or place of business.
3. The wallet card is for you to carry on your person. If you do not wish to carry the wallet card, place it in a secure place.
4. The employer's copy is for persons who must demonstrate current licensure/certification in order to retain employment or privileges. The employer's card is to be presented to the employer and kept by them as a part of your personnel file. Only one copy of this card can be supplied to you.

WALLET CARD

STATE OF CONNECTICUT
DEPARTMENT OF PUBLIC HEALTH

NAME
BENJAMIN L SILVERMAN

VALIDATION NO. 03-768866	CERTIFICATE NO. 000349	CURRENT THROUGH 08/31/20
------------------------------------	----------------------------------	------------------------------------

PROFESSION
ASBESTOS CONSULTANT-INSP/MGMT PLANNER

SIGNATURE _____
COMMISSIONER _____

1000997-0001002-0000001 of 0000001-C01-at1d00101-1264-00999

Certificate of Training

This program was presented at
Fuss & O'Neill Incorporated in
Manchester, CT with the prior
approval of the CT DPH.

Awarded to

BEN SILVERMAN

*For successful completion of a 4 Hour, 1/2 Day
Asbestos Building Inspector
Annual Refresher Training
JANUARY 8, 2019*

This training was approved and given in accordance with the
Regulations for Connecticut State Agencies
RCSA 20 - 440 - 1-9 and RCSA 20 - 441 and meets the
requirements of the EPA Revised MAP under TSCA Title II of 4/4/94.

Presented by

Mystic Air Quality Consultants, Inc.

1204 North Road, Groton, CT 06340 (800) 247-7746


Certificate Number: ABIRF27243

Exam Grade: 100

Expiration Date: 01/08/2020



Christopher J. Eident, CIH, CSP, RS



George Williamson, Training Director

Richard Haffey, Training Director

1000520 01 AB 0.409 **AUTO T2 0 1064 06040 599246 C01 P00322 I



SCOTT J CRISCUOLO
FUSS & O'NEILL, INC
146 HARTFORD RD
MANCHESTER CT 06040-5992



Dear SCOTT J CRISCUOLO,

Attached you will find your validated certificate for the coming year. Should you have any questions about your certificate renewal, please do not hesitate to write or call:

Department of Public Health
P.O. Box 340308
M.S.#12MQA
Hartford, CT 06134-0308

(860) 509-7603
oplc.dph@ct.gov
www.ct.gov/dph/license

Sincerely,

RENÉE D. COLEMAN-MITCHELL, MPH, COMMISSIONER
DEPARTMENT OF PUBLIC HEALTH

EMPLOYER'S COPY
STATE OF CONNECTICUT
DEPARTMENT OF PUBLIC HEALTH

NAME
SCOTT J CRISCUOLO

VALIDATION NO. 03-755555	CERTIFICATE NO. 001040	CURRENT THROUGH 03/31/20
-----------------------------	---------------------------	-----------------------------

PROFESSION
ASBESTOS CONSULTANT-INSPECTOR

SIGNATURE
 COMMISSIONER

STATE OF CONNECTICUT
DEPARTMENT OF PUBLIC HEALTH

PURSUANT TO THE PROVISIONS OF THE GENERAL STATUTES OF CONNECTICUT

THE INDIVIDUAL NAMED BELOW IS CERTIFIED
BY THIS DEPARTMENT AS A
ASBESTOS CONSULTANT-INSPECTOR

SCOTT J CRISCUOLO

CERTIFICATE NO. 001040
CURRENT THROUGH 03/31/20
VALIDATION NO. 03-755555

SIGNATURE
 COMMISSIONER

INSTRUCTIONS:

1. Detach and sign each of the cards on this form
2. Display the large card in a prominent place in your office or place of business.
3. The wallet card is for you to carry on your person. If you do not wish to carry the wallet card, place it in a secure place.
4. The employer's copy is for persons who must demonstrate current licensure/certification in order to retain employment or privileges. The employer's card is to be presented to the employer and kept by them as a part of your personnel file. Only one copy of this card can be supplied to you.

WALLET CARD
STATE OF CONNECTICUT
DEPARTMENT OF PUBLIC HEALTH

NAME
SCOTT J CRISCUOLO

VALIDATION NO. 03-755555	CERTIFICATE NO. 001040	CURRENT THROUGH 03/31/20
-----------------------------	---------------------------	-----------------------------

PROFESSION
ASBESTOS CONSULTANT-INSPECTOR

SIGNATURE
 COMMISSIONER

1000520-0000525-0000001 of 0000001-C01-a1d00101-1064-00522

CERTIFICATE OF ACHIEVEMENT

This certifies that

Scott Criscuolo

has successfully completed the

**24 Hour Asbestos Site Inspector Initial Training
Asbestos Accreditation Under TSCA Title II
40 CFR Part 763**

conducted by

**ATC Group Services LLC
73 William Franks Drive
West Springfield, MA 01089
(413) 781-0070**

Principal Instructor: Gregory Morsch

Date of Course

April 15-17, 2019

Expiration Date

April 17, 2020

Regional Manager: Gregory Morsch

Certificate Number

SI-1958

Examination Date

April 17, 2019

1000583 01 AB 0.403 **ALJIC 17 0 1564 06040 599246 C01 P005831



JAMES B BLUM
FUSS & O'NEILL LLC
146 HARTFORD RD
MANCHESTER CT 06040-5992



Dear JAMES B BLUM,

Attached you will find your validated certificate for the coming year. Should you have any questions about your certificate renewal, please do not hesitate to write or call:

Department of Public Health
P.O. Box 340308
M.S.#12MQA
Hartford, CT 06134-0308

(860) 509-7603
oplc.dph@ct.gov
www.ct.gov/dph/license

Sincerely,

RAUL PINO, MD, MPH, COMMISSIONER
DEPARTMENT OF PUBLIC HEALTH

EMPLOYER'S COPY
STATE OF CONNECTICUT
DEPARTMENT OF PUBLIC HEALTH

NAME
JAMES B BLUM

VALIDATION NO: 03-715992 CERTIFICATE NO: 000841 CURRENT THROUGH: 11/30/19

PROFESSION
ASBESTOS CONSULTANT-INSPECTOR

SIGNATURE COMMISSIONER

STATE OF CONNECTICUT
DEPARTMENT OF PUBLIC HEALTH
PURSUANT TO THE PROVISIONS OF THE GENERAL STATUTES OF CONNECTICUT

THE INDIVIDUAL NAMED BELOW IS CERTIFIED
BY THIS DEPARTMENT AS A
ASBESTOS CONSULTANT-INSPECTOR

JAMES B BLUM

CERTIFICATE NO:
000841

CURRENT THROUGH:
11/30/19

VALIDATION NO:
03-715992

SIGNATURE COMMISSIONER

INSTRUCTIONS:

1. Detach and sign each of the cards on this form.
2. Display the large card in a prominent place in your office or place of business.
3. The wallet card is for you to carry on your person. If you do not wish to carry the wallet card, place it in a secure place.
4. The employer's copy is for persons who must demonstrate current licensure/certification in order to retain employment or privileges. The employer's card is to be presented to the employer and kept by them as a part of your personnel file. Only one copy of this card can be supplied to you.

WALLET CARD
STATE OF CONNECTICUT
DEPARTMENT OF PUBLIC HEALTH

NAME
JAMES B BLUM

VALIDATION NO: 03-715992 CERTIFICATE NO: 000841 CURRENT THROUGH: 11/30/19

PROFESSION
ASBESTOS CONSULTANT-INSPECTOR

SIGNATURE COMMISSIONER

1000583-0000588-0000001 of 0000001-C01-a1d00101-1564-00585

Certificate of Training

Awarded to

JAMES BLUM

*For successful completion of a 4 Hour, 1/2 Day
Asbestos Building Inspector
Annual Refresher Training
SEPTEMBER 4, 2019*

This training was approved and given in accordance with the
Regulations for Connecticut State Agencies
RCSA 20 - 440 - 1-9 and RCSA 20 - 441 and meets the
requirements of the EPA Revised MAP under TSCA Title II of 4/4/94.

Presented by

**Mystic Air Quality Consultants, Inc.
1204 North Road, Groton, CT 06340 (800) 247-7746**

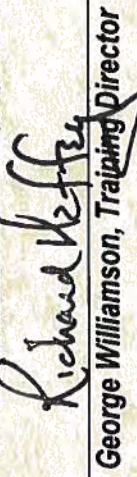
Certificate Number: ABIRF27778

Exam Grade: 100



Christopher J. Eident, CIH, CSP, RS

Expiration Date: 09/04/2020



George Williamson, Training Director

Richard Haffey, Training Director

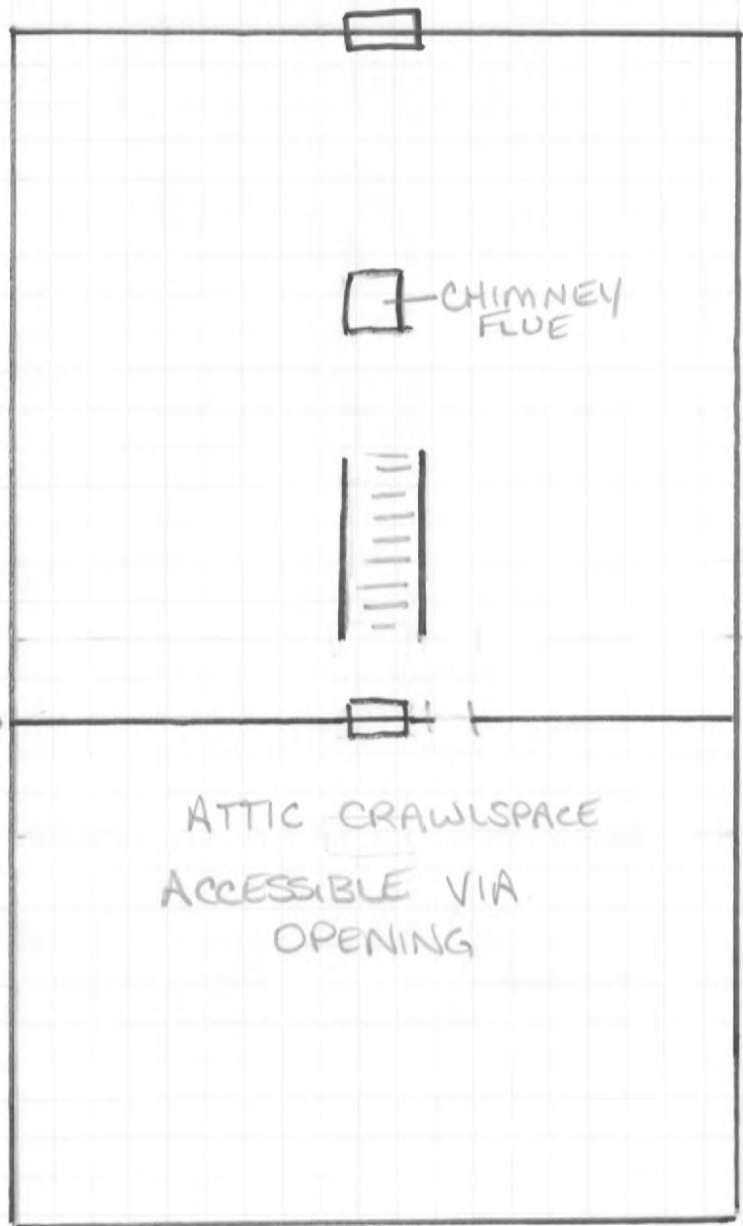
Appendix B

Floor Plans

FACILITIES ADMIN BLDG - ATTIC

NOT TO SCALE

LARSON RD

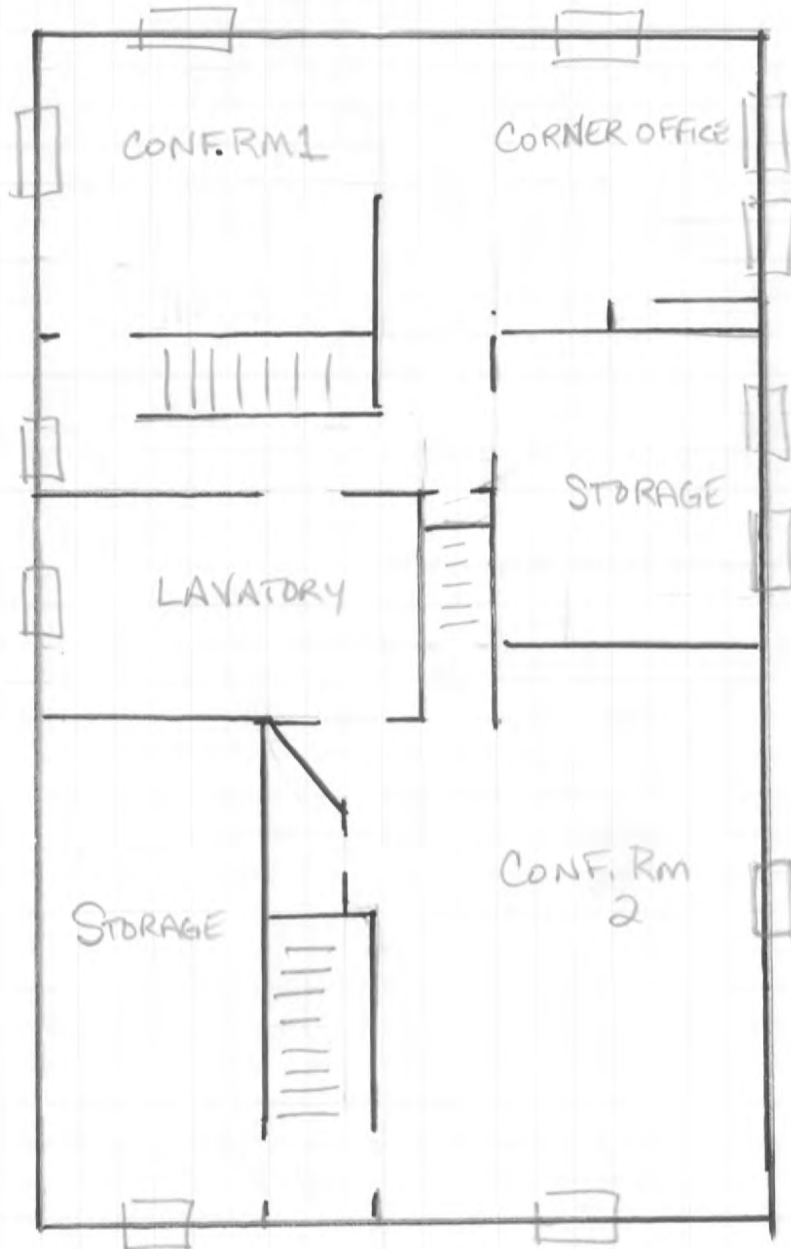


ROOF LEVEL CHANGE →

DANBURY RD

FACILITIES ADMIN BLDG - 2nd FLOOR

Not to Scale
Larson Rd



Danbury Rd

TO HIGH SCHOOL
←

FACILITIES ADMIN BLDG - 1ST FL

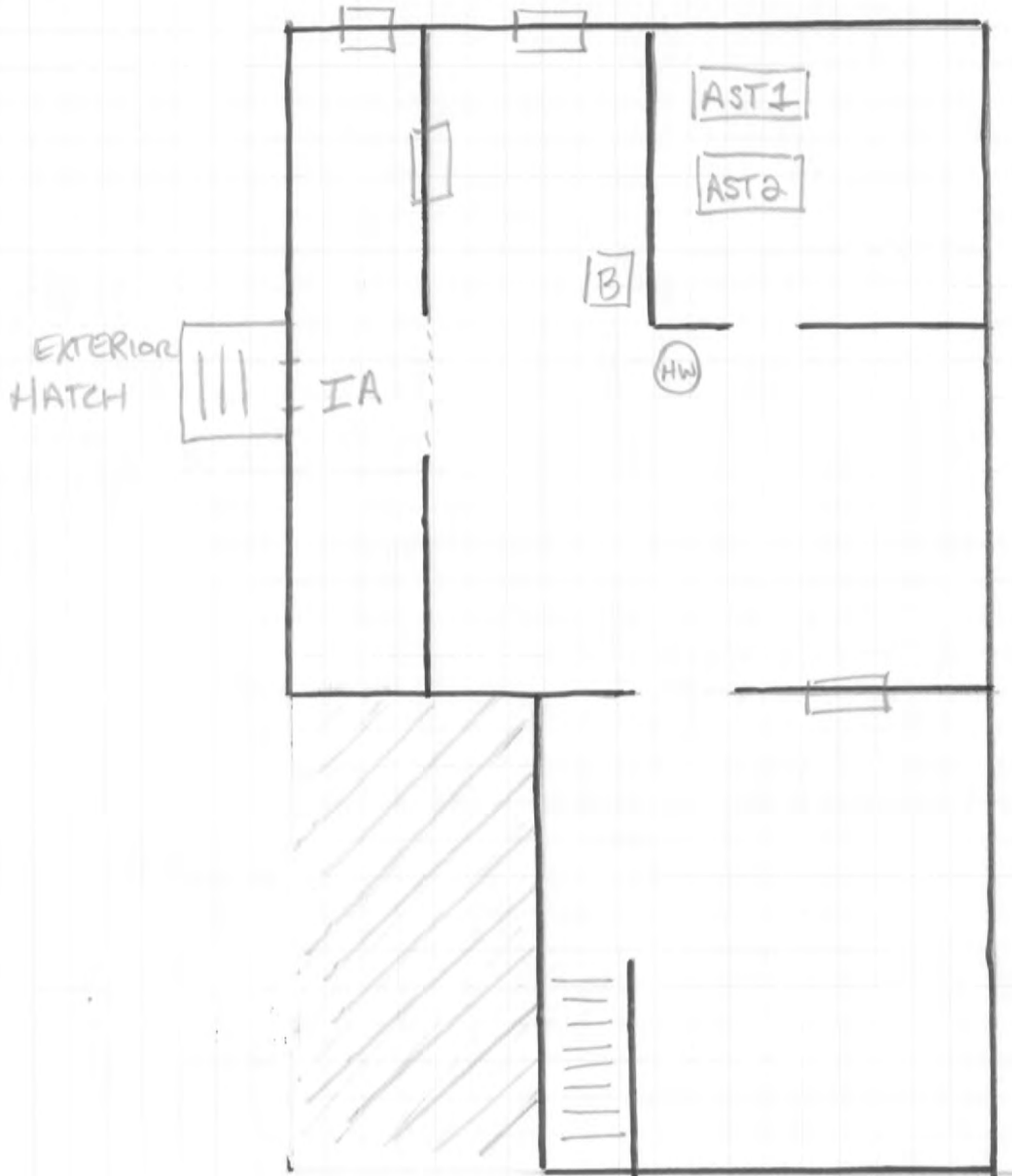
NOT TO SCALE



FACILITIES ADMIN BLDG - BASEMENT

not to Scale
Larson Rd

1/2



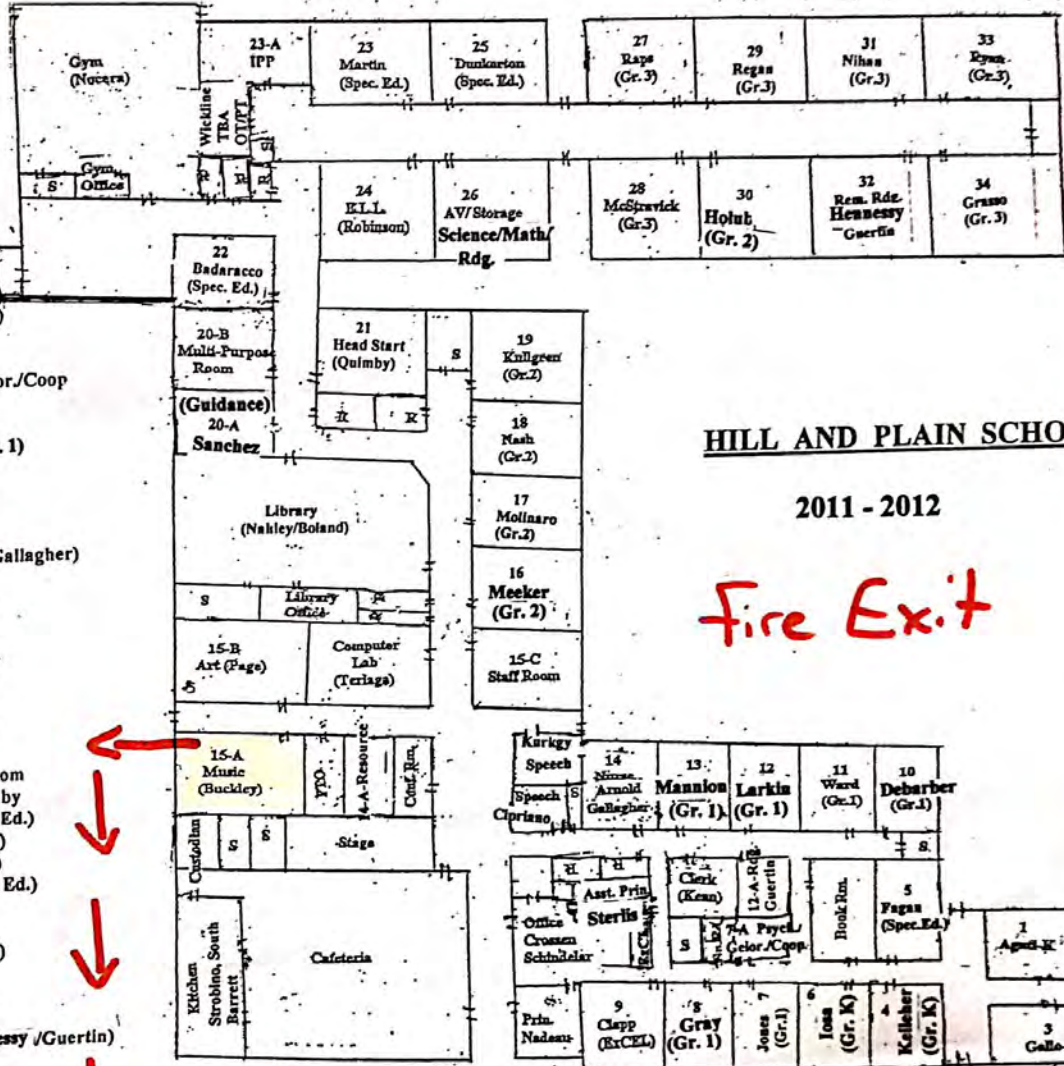
Danbury Rd

TO HIGH SCHOOL
←

MAP KEY:

- T - Teacher Clerk
 - P - Psychologist
 - R - Rest Room
 - S - Storage
 - ! - Exit - Classroom
 - !! - Exit - Building
- ROOM # - USAGE**

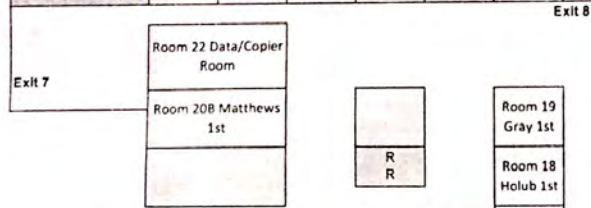
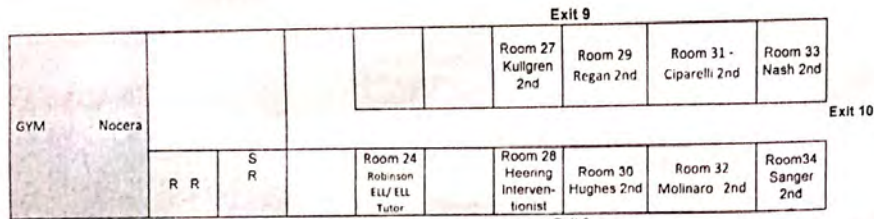
- 1 Agati (Gr. K)
- 2 Hahn (Gr. K)
- 3 Gallo (Gr. K)
- 4 Kelleher (Gr. K)
- 5 Fagan (Spec. Ed.)
- 6 Iosa (Gr. K)
- 7 Jones (Gr. 1)
- 7-A Psych./TAG-Gelor/Coop
- 8 Kewms (Gr. 1)
- 9 Clapp (ExCEL)
- 10 Debarber (Gr. 1)
- 11 Ward (Gr. 1)
- 12 Larkin (Gr. 1)
- 12-A Guertin (Rdg.)
- 13 Mannion (Gr. 1)
- 14 Nurses (Arnold/Gallagher)
- 14-A Resource
- 15-A Buckley (Music)
- 15-B Page (Art)
- 15-C Staff Room
- 16 Meeker (Gr. 2)
- 17 Molinaro (Gr. 2)
- 18 Nash (Gr. 2)
- 19 Kullgren (Gr. 2)
- 20-A Resource
- 20-B Multi-Purpose Room
- 21 Head Start -Quimby
- 22 Badaracco (Spec. Ed.)
- 23 Martin (Spec. Ed.)
- 24 Robinson (E.L.L.)
- 25 Dunkerton (Spec. Ed.)
- 26 Storage / A.V.
- 27 Raps (Gr. 3)
- 28 McStravick (Gr. 3)
- 29 Regan (Gr. 3)
- 30 Holub (Gr. 2)
- 31 Nihan (Gr. 3)
- 32 Rem. Rdg. (Hennessy /Guertin)
- 33 Ryan (Gr. 3)
- 34 Grasso (Gr. 3)



HILL AND PLAIN SCHOOL

2011 - 2012

Fire Exit

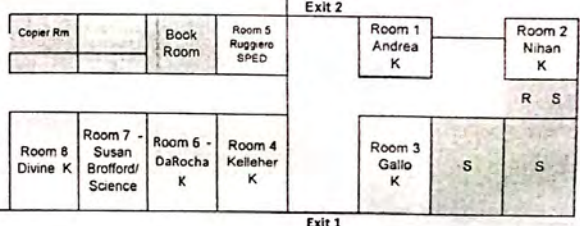
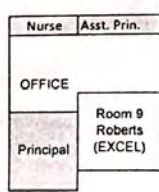
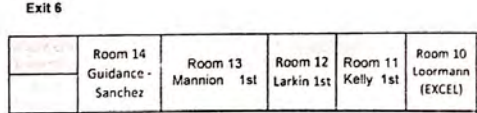
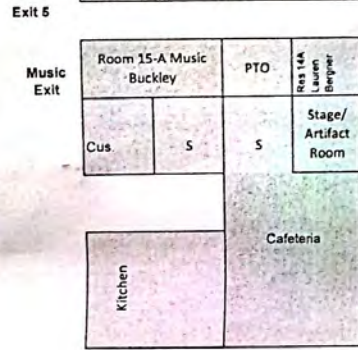
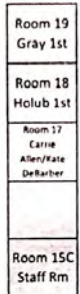
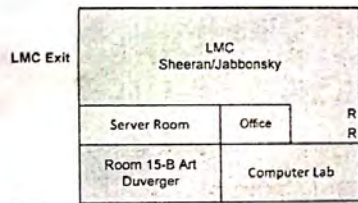


**Hill and Plain School
2018 - 2019**

MAP KEY

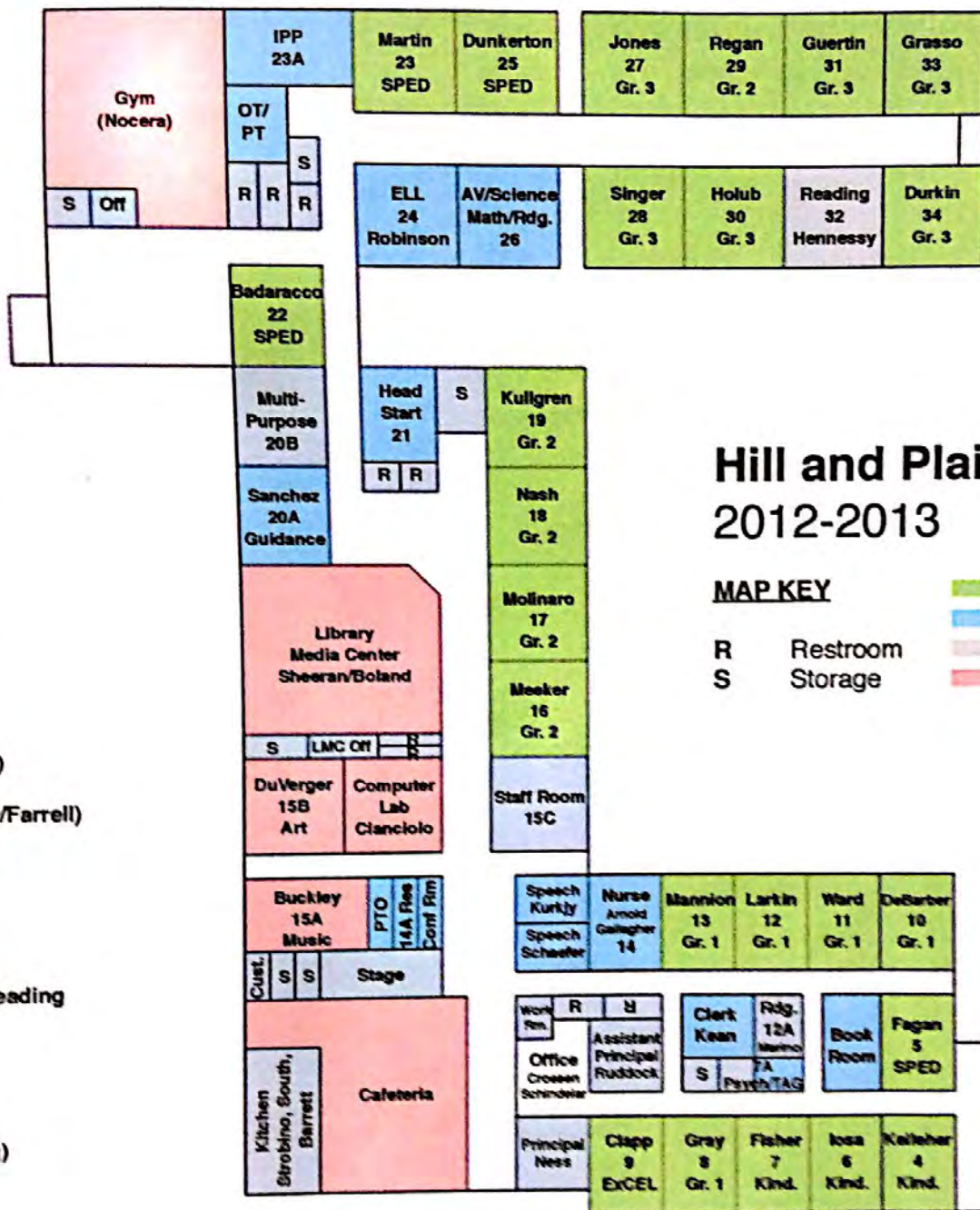
- Classroom
- Support Services
- Offices, Misc.
- Special Areas

R Restrooms
S Storage

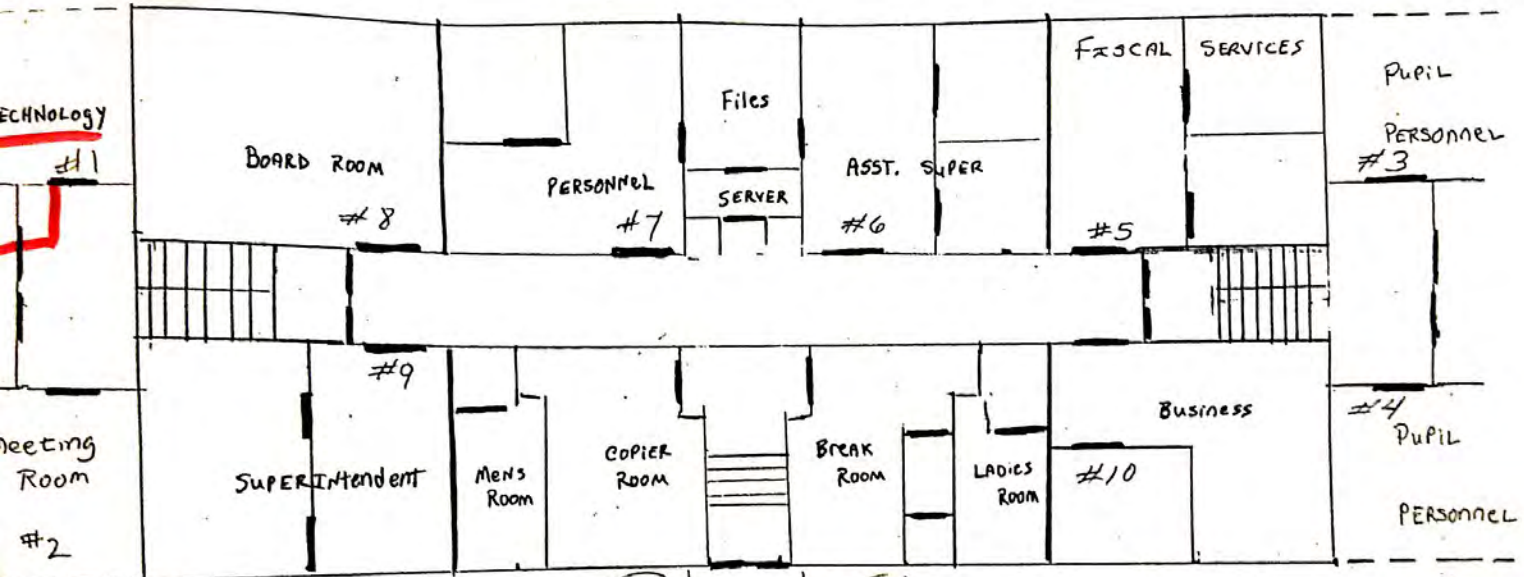


Exit 3

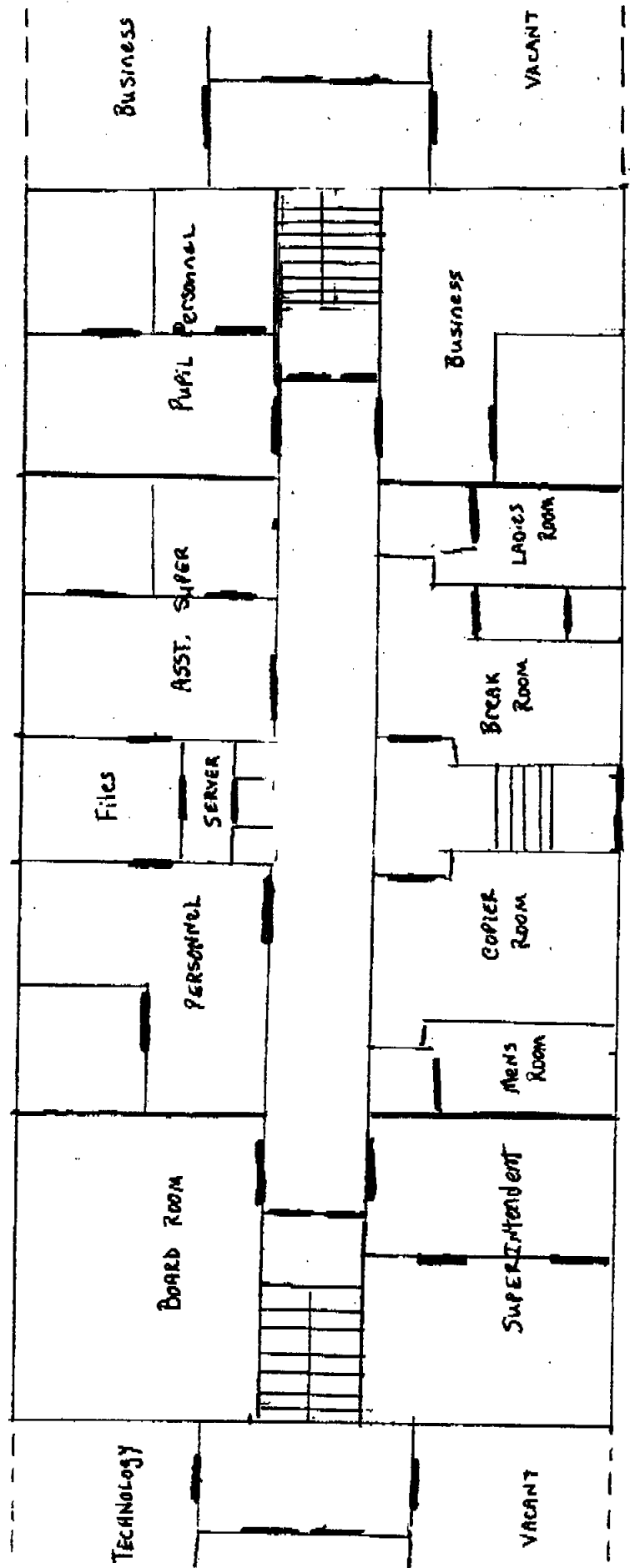
Exit 1



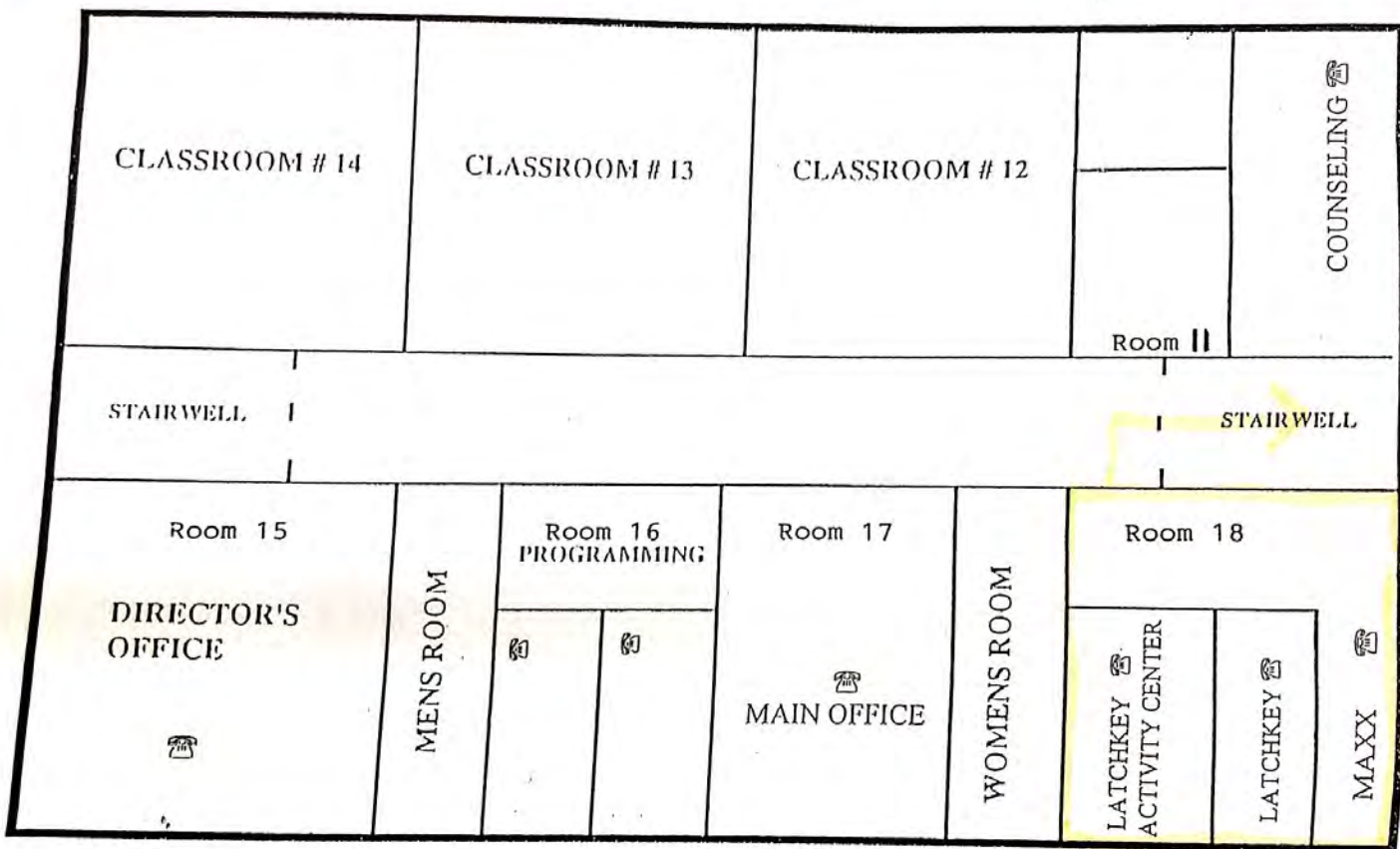
CENTRAL OFFICE EVACUATION PLAN



CENTRAL OFFICE SO EAST STREET
 EVACUATION PLAN
 2nd Floor

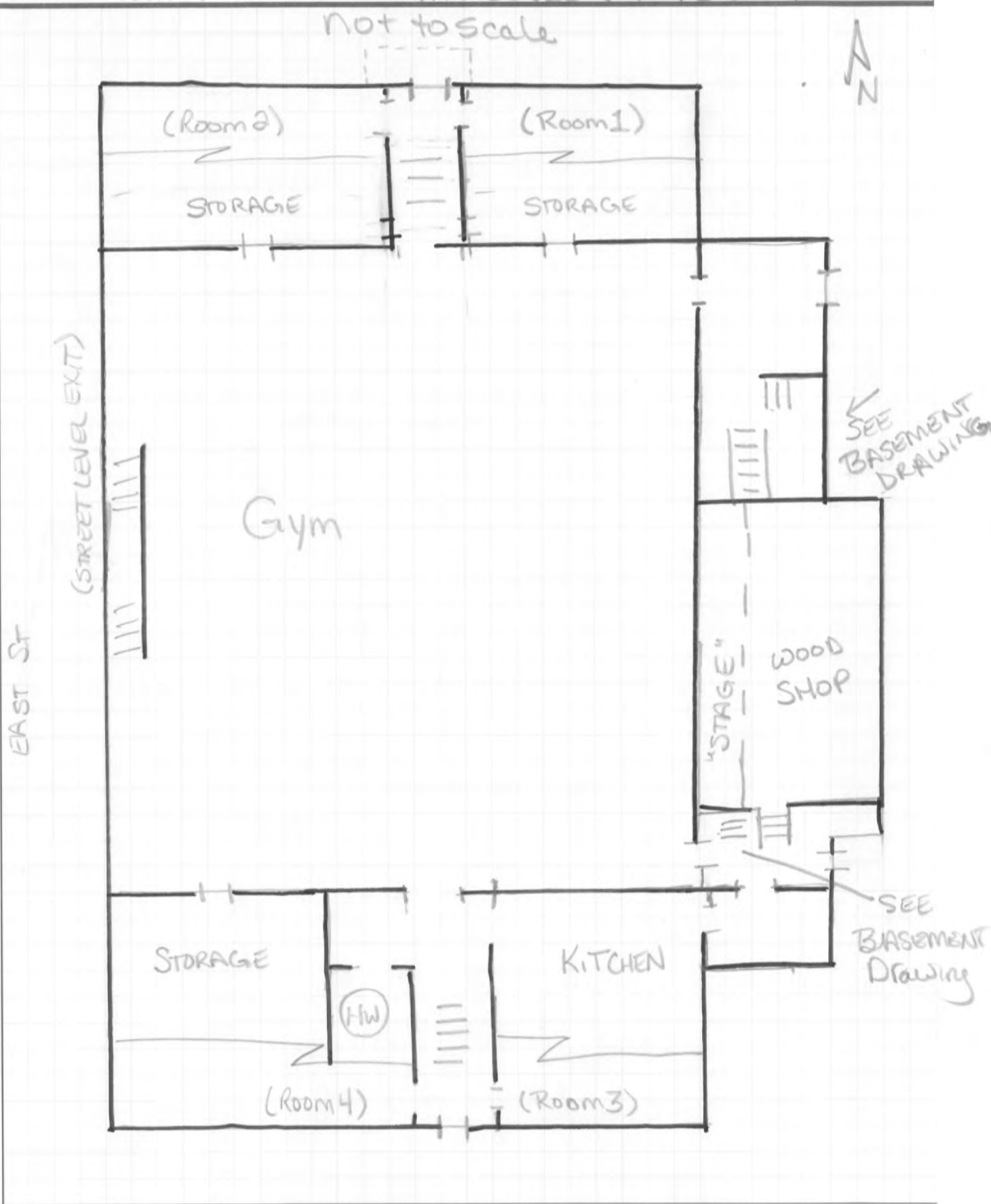


- 3. Take attendance before leaving your room and at assembly point.
- 4. Your assembly point is: **FRONT LAWN AWAY FROM BUILDING.**



LILUS ADMIN BLDG - GYM LEVEL ("1st FL")

Not to Scale



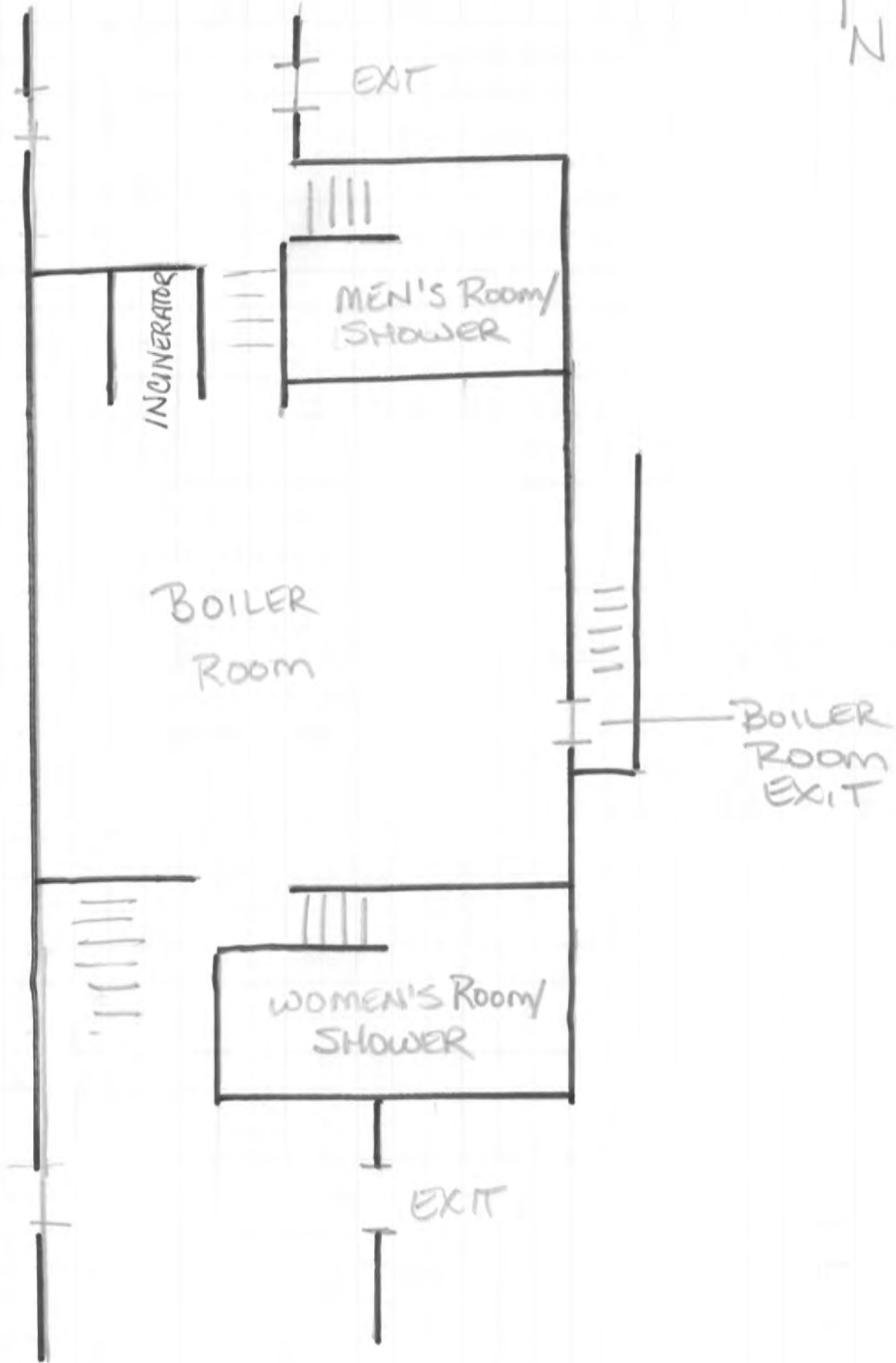
Lillis Admin Bldg - BASEMENT LEVEL (Boiler Room)

not to scale



EAST STREET ↗

(Gym)





FUSS & O'NEILL

Prepared By

Date

Checked By

Date

Project No

20071230.B50

Lillis Admin Cross-section

Sheet No
of

N →

3rd FL (Rms 11-18)

2nd FL (Rms 5-10)

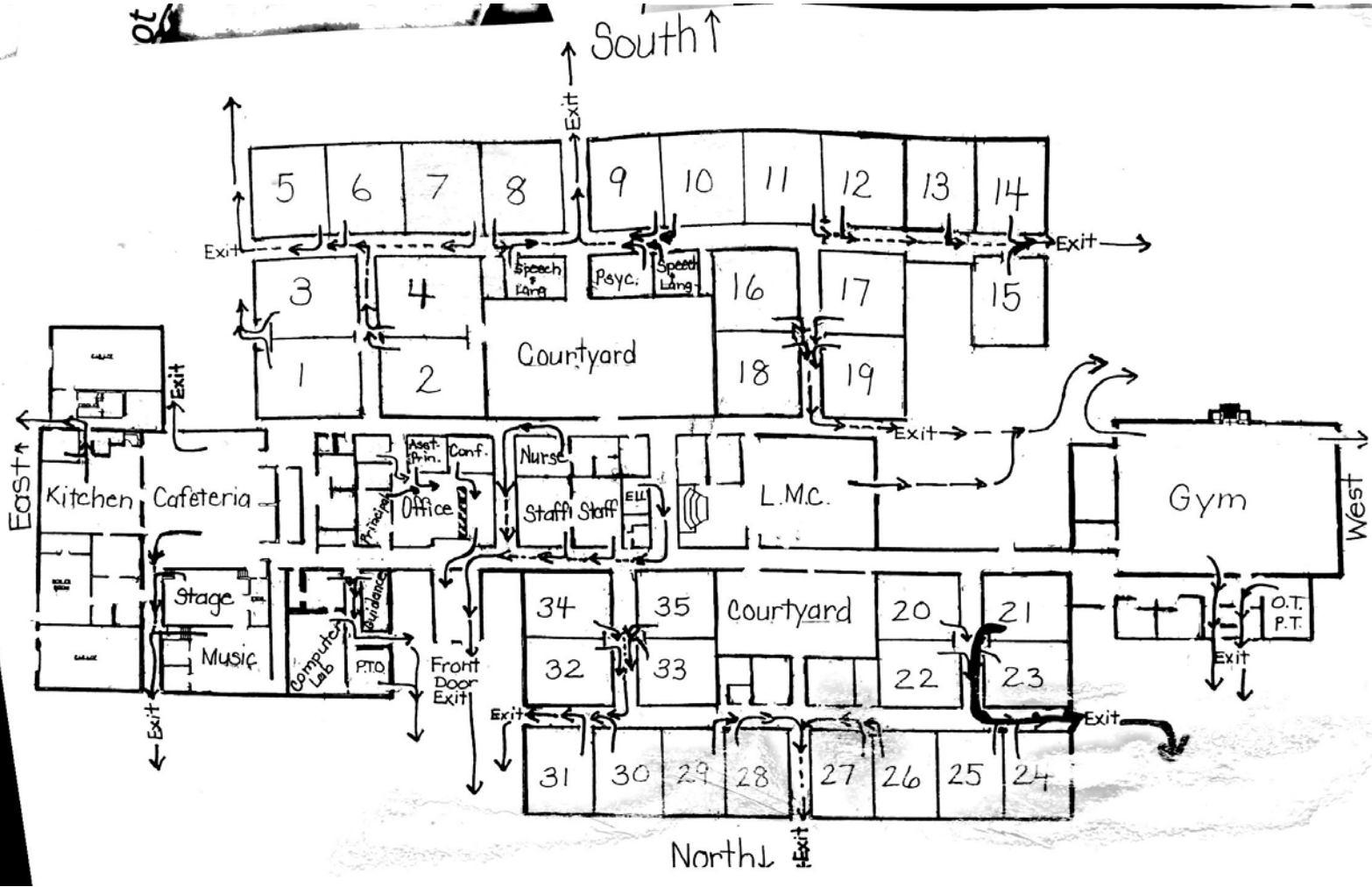
Rms 3+4
ENTRANCE

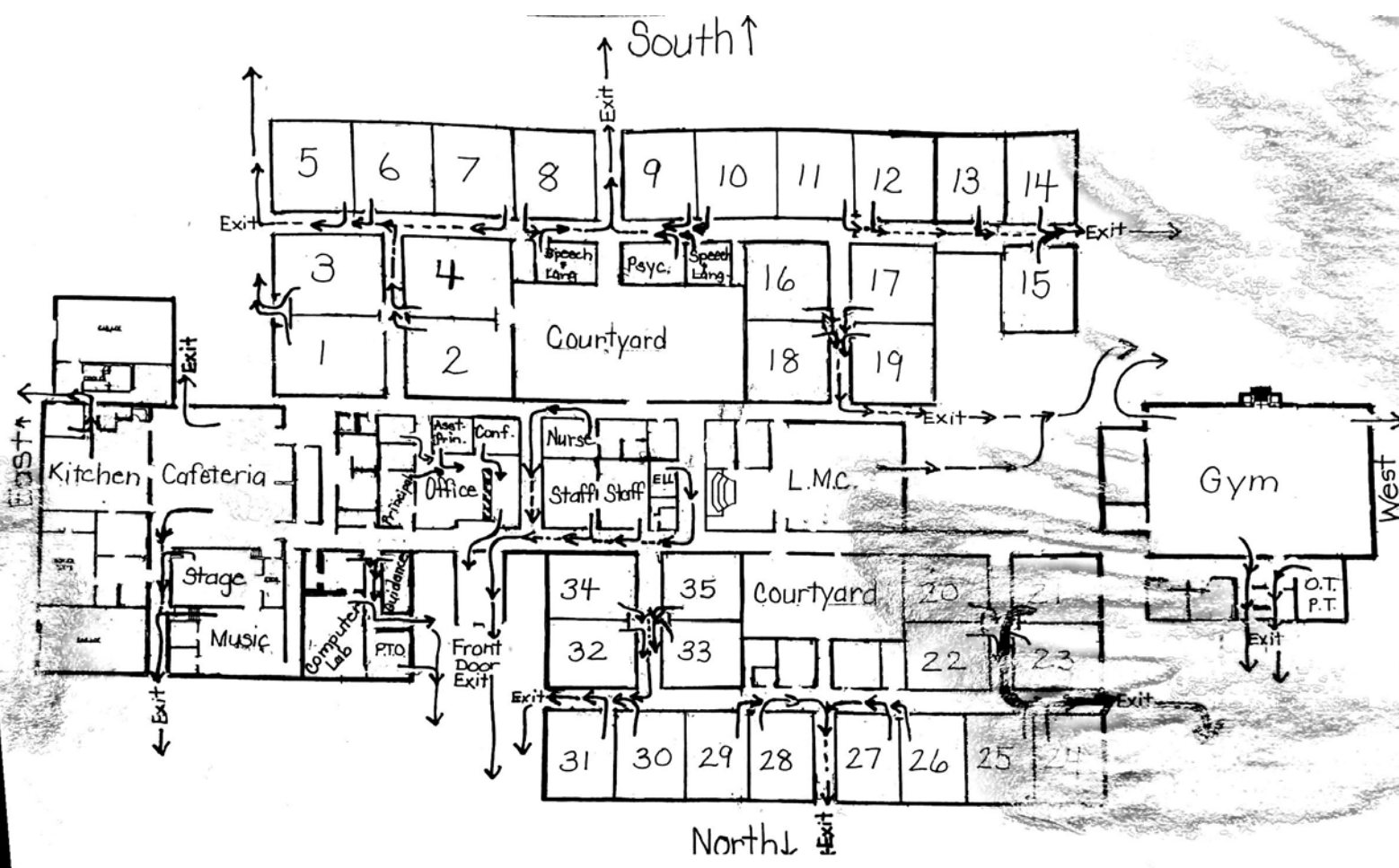
Rms 1+2, Entrance

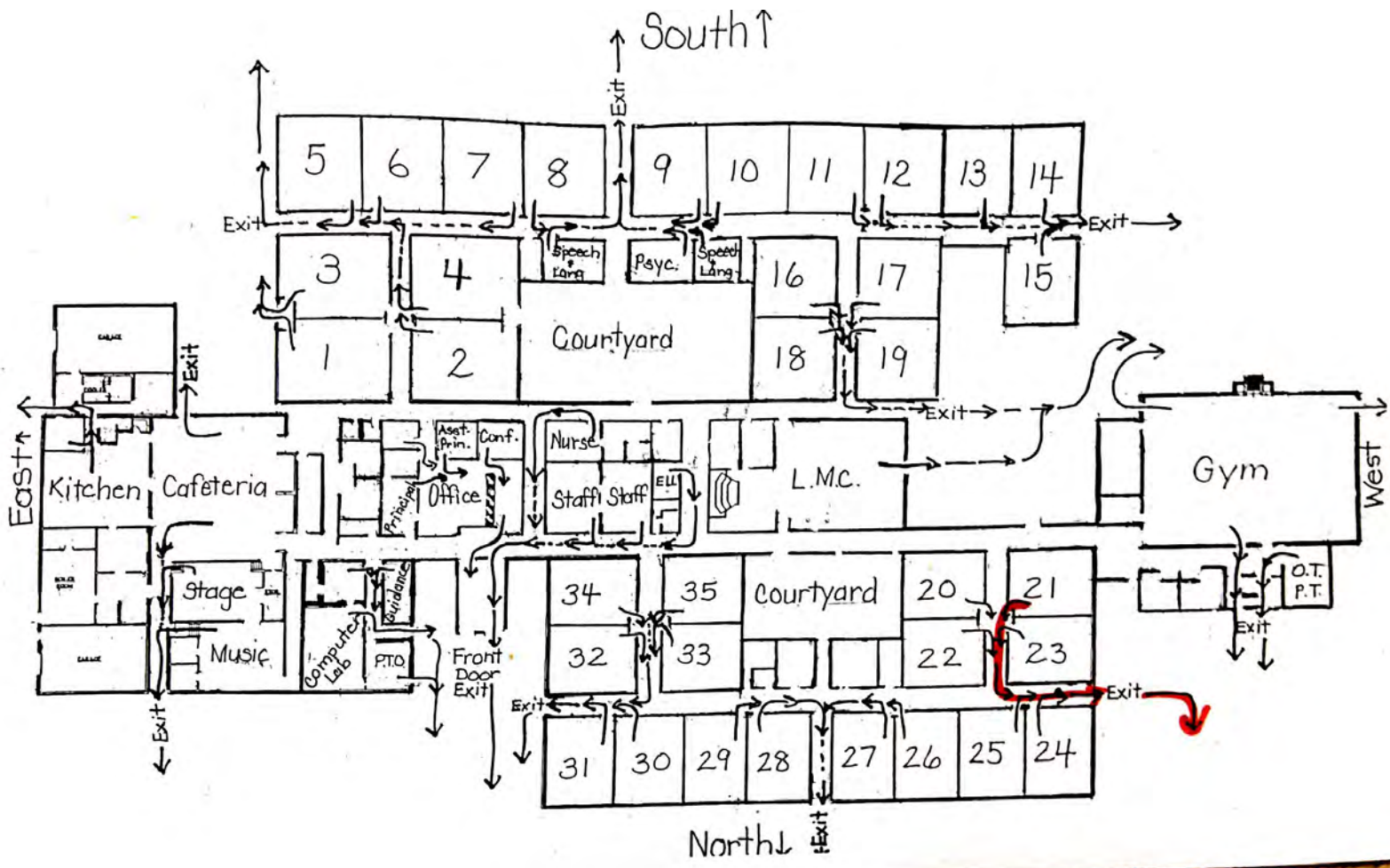
1st FL (Gym Level)

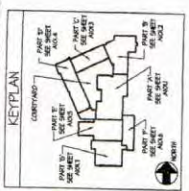
Partial
Basement (Boiler Rm, Bathrooms/Showers)

ot









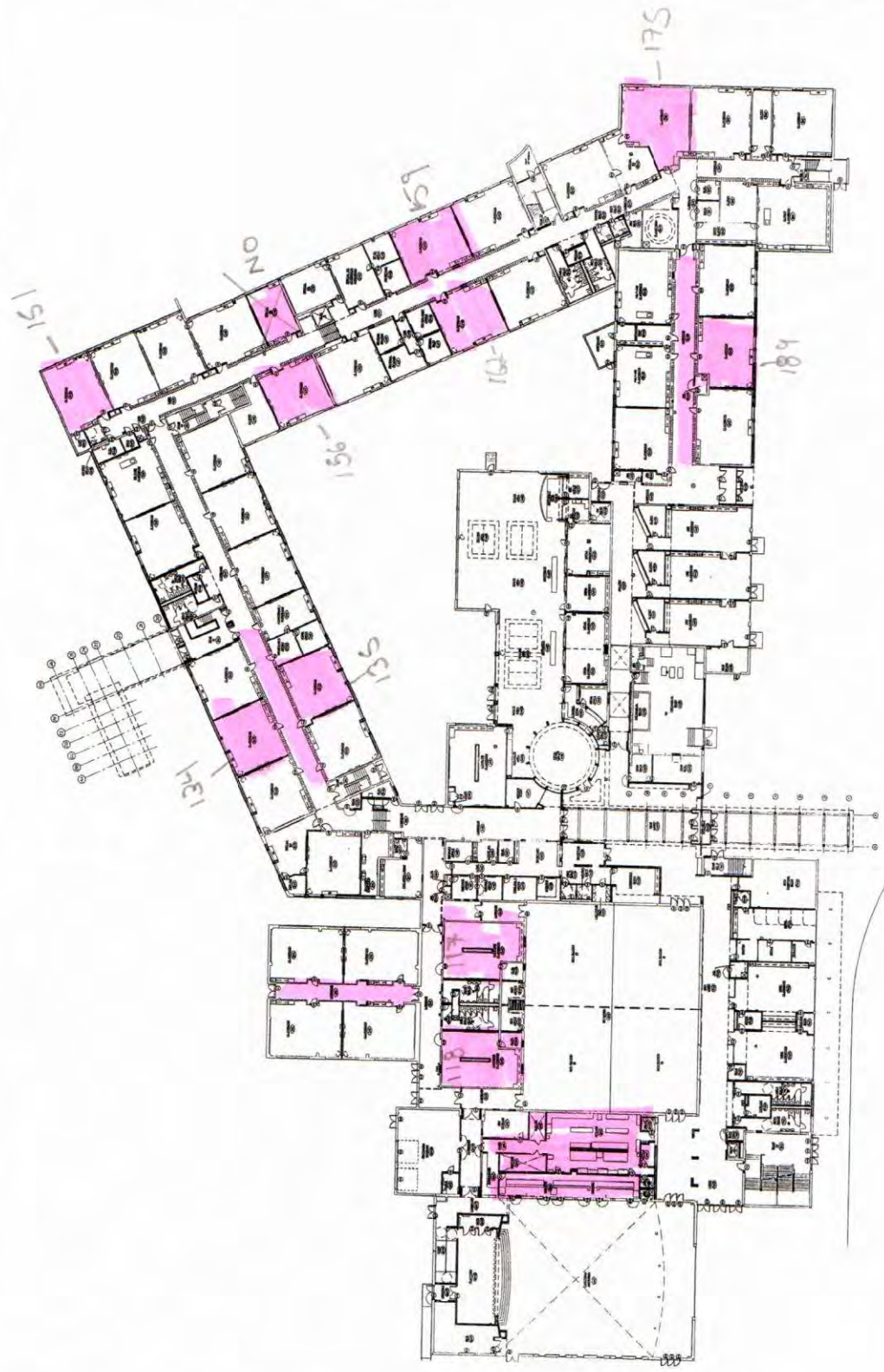
PROJECT NUMBER: 100101
PROJECT NAME: MILFORD INTERMEDIATE SCHOOL
ARCHITECT: FLETCHER THOMPSON
OWNER: STATE OF CONNECTICUT
DATE: 08/20/99
DRAWN BY: D. CONNOLLY



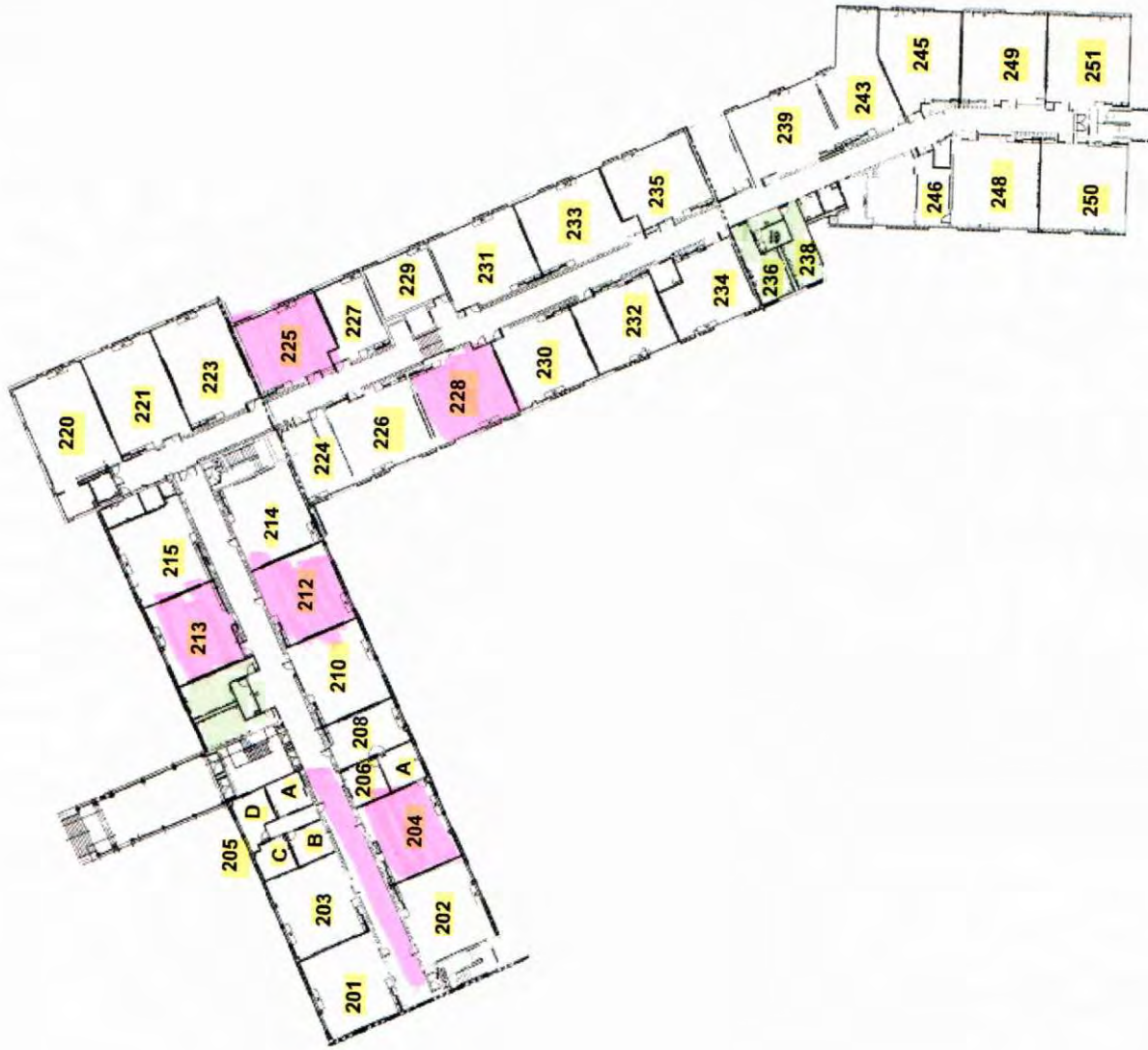
ADDITIONS AND RENOVATIONS TO NEW MILFORD INTERMEDIATE SCHOOL
345 DIXON AVENUE, SUITE 200
MILFORD, CONNECTICUT 06455-4001

OVERALL FIRST FLOOR PLAN

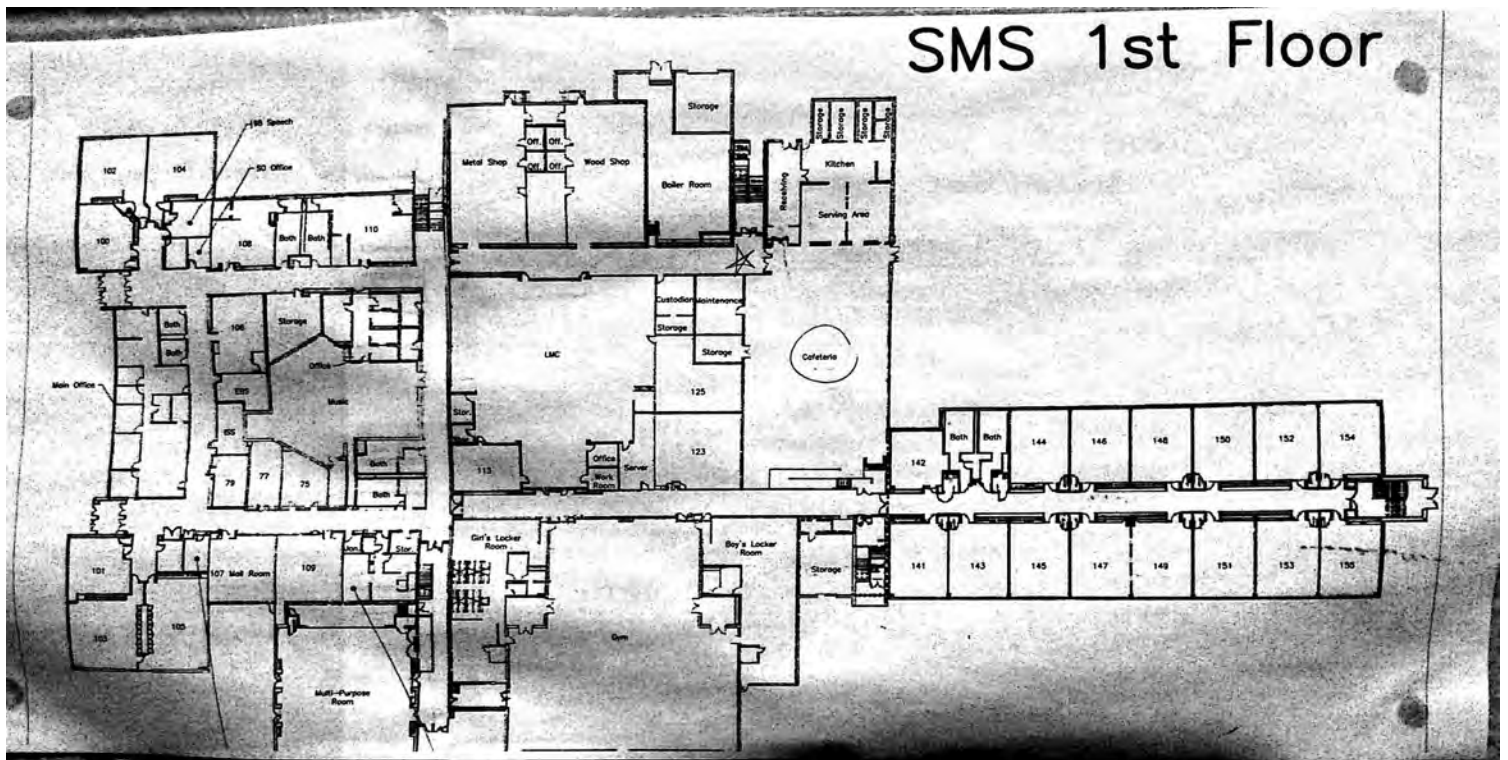
DATE PLOTTED: 08/20/99
SCALE: 1" = 20'-0"
PROJECT: 49802.06
SHEET: A101.0

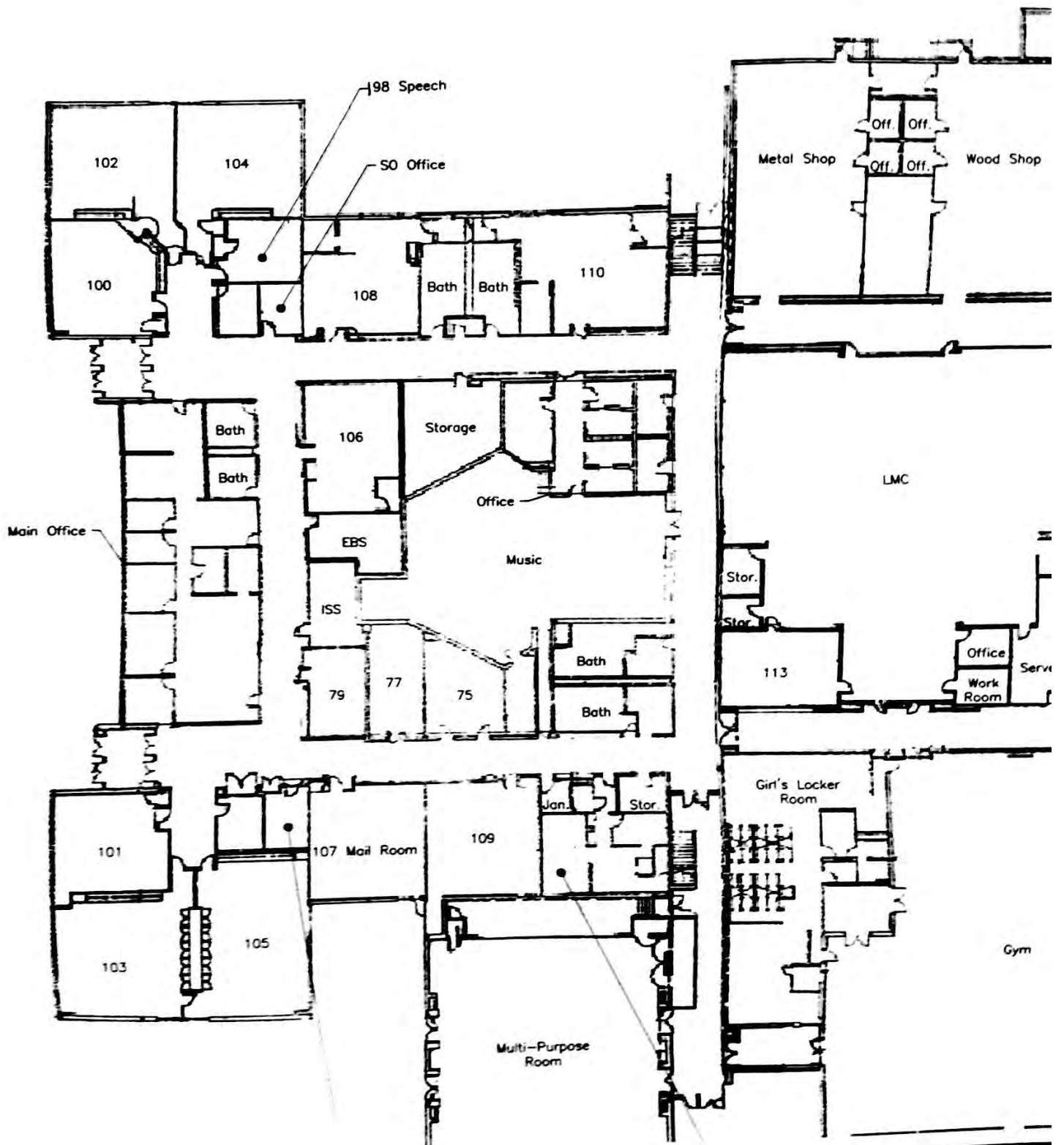


SNIS 2nd FL.

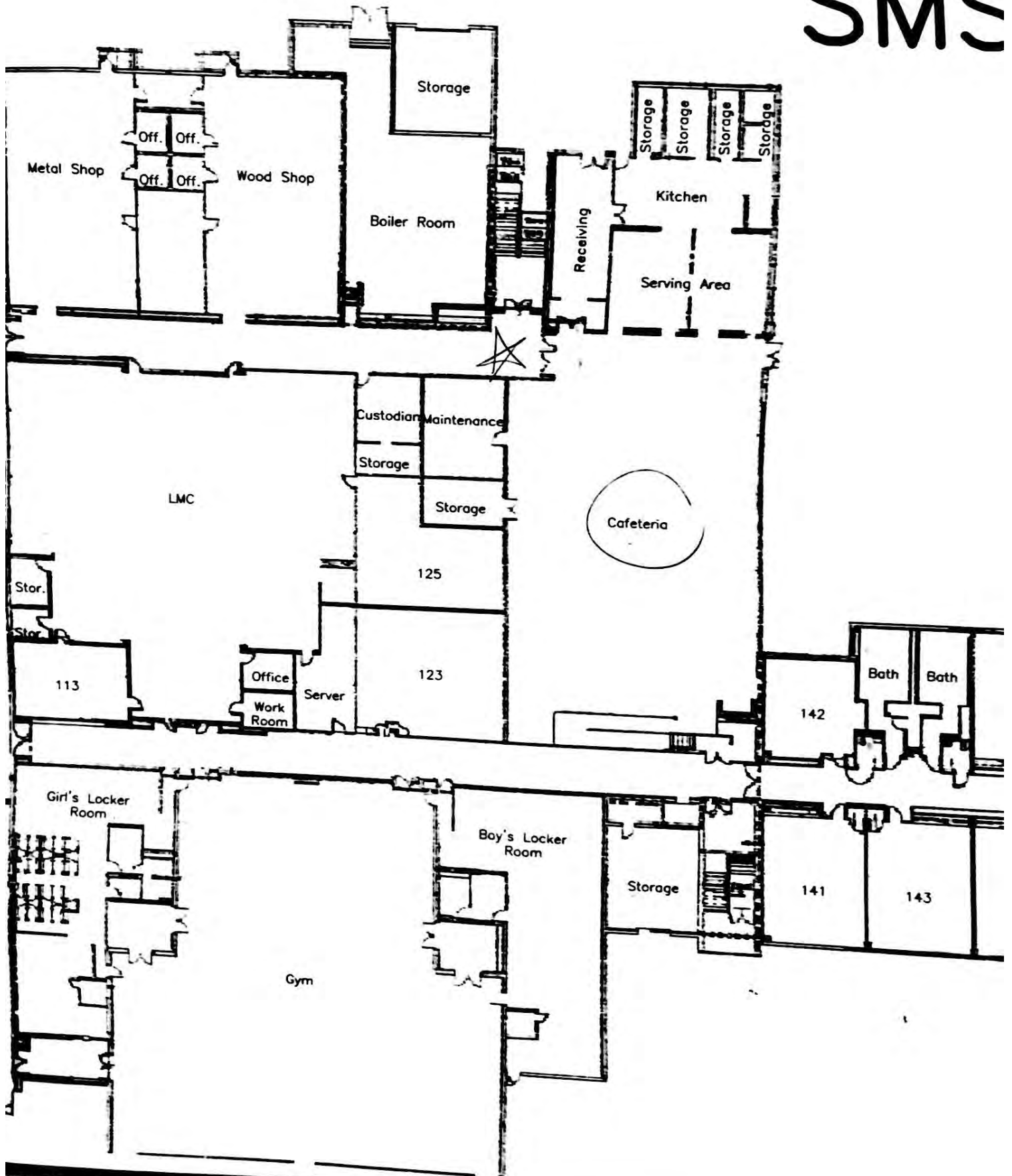


SMS 1st Floor

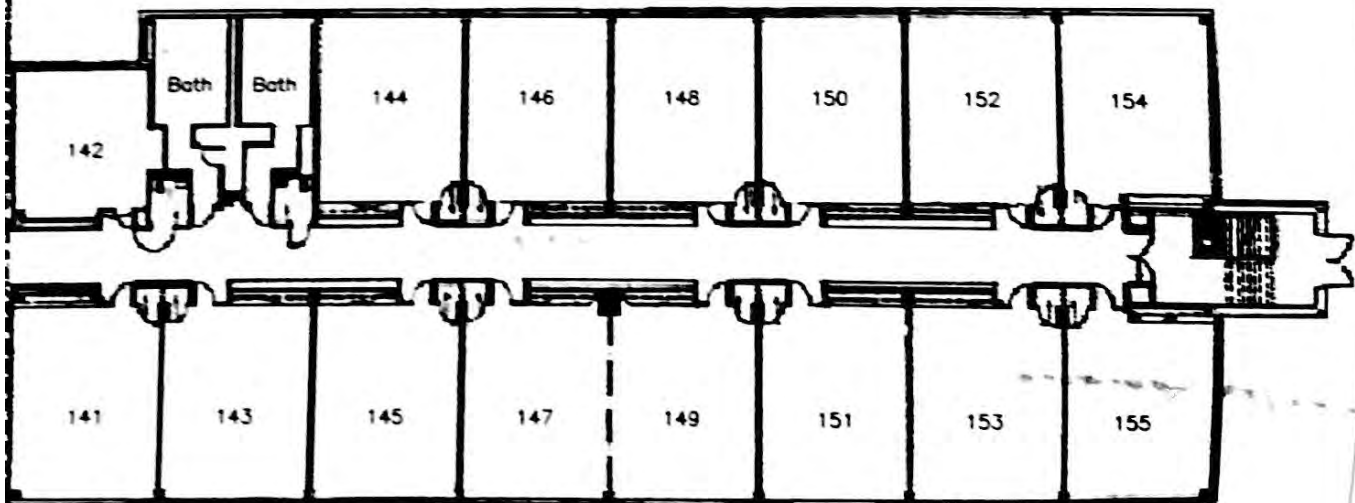




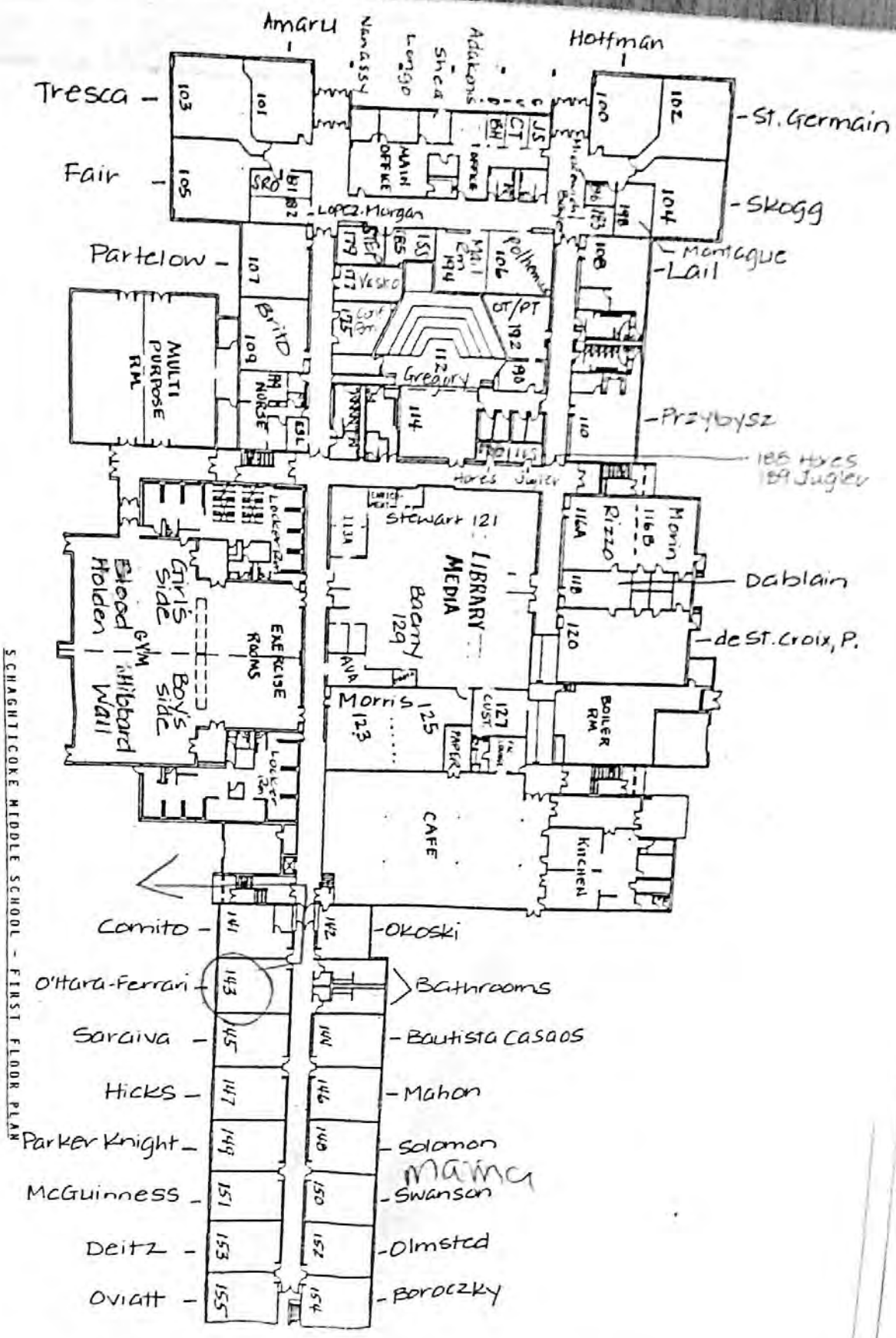
SMS

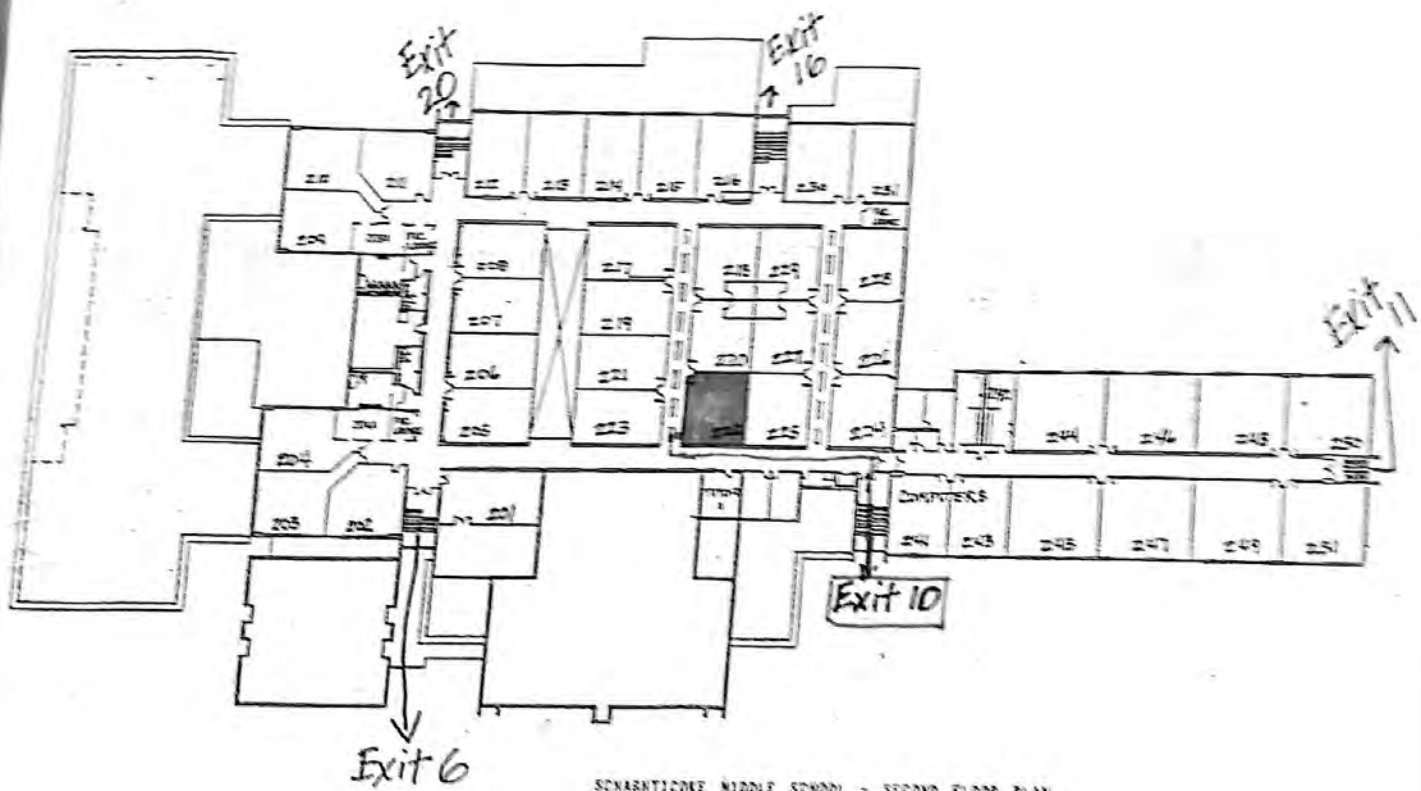


SMS 1st Floor



7.98c

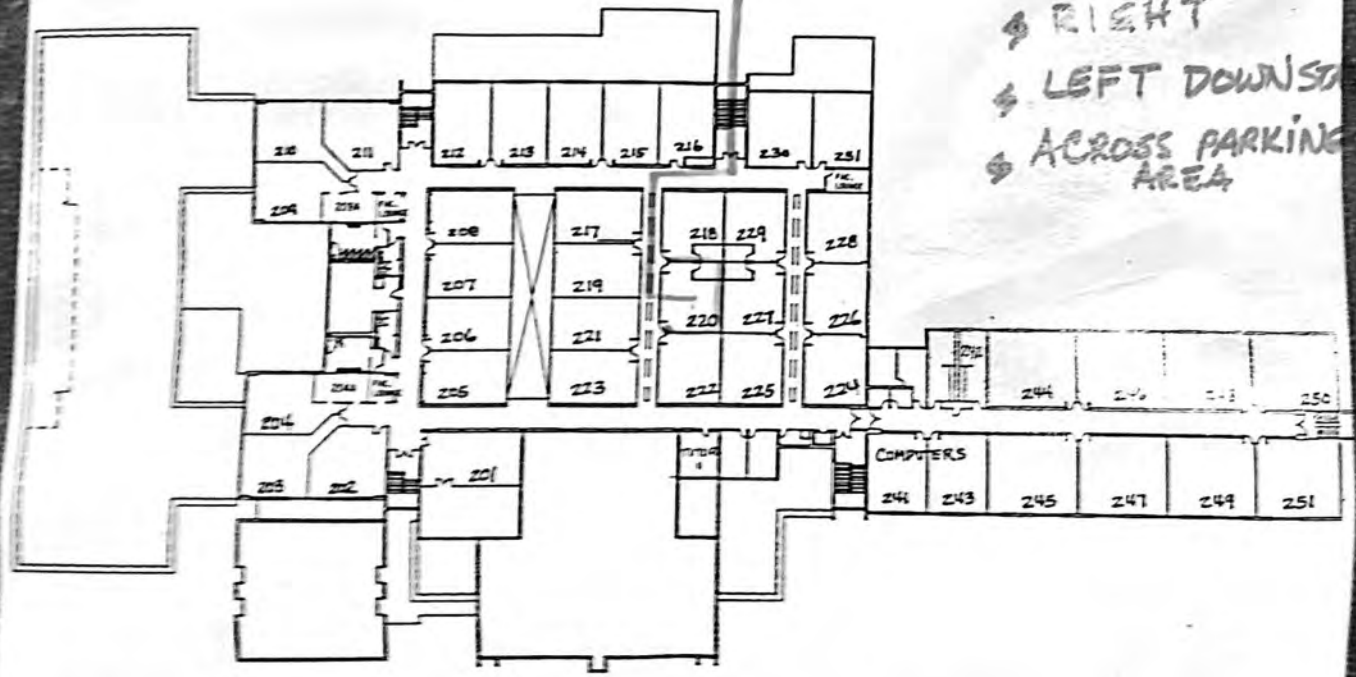


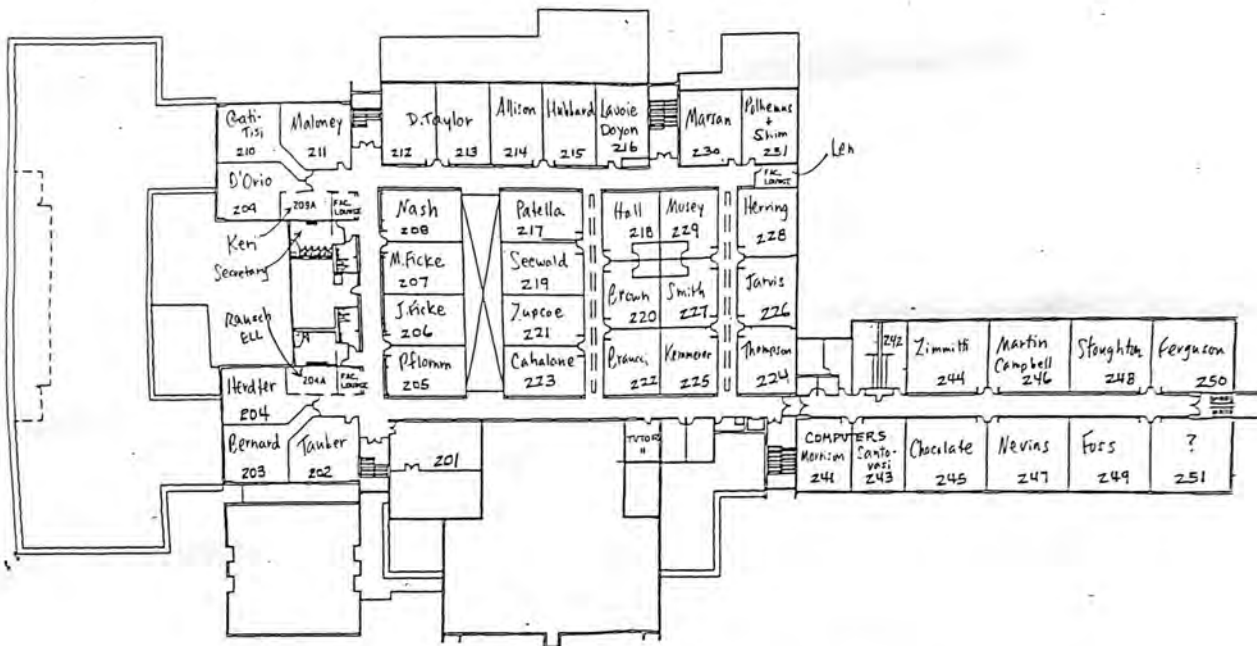


SCHARLOTZKE MIDDLE SCHOOL - SECOND FLOOR PLAN
EVACUATION MAP

18 17

220;
\$ RIGHT
\$ RIGHT
\$ LEFT DOWN
\$ ACROSS PARKING
AREA





SCHAGHTICOKE MIDDLE SCHOOL - SECOND FLOOR PLAN

EVACUATION MAP