

THINGS TO KNOW FOR YOUR PERMIT TEST

DRIVERS MANUAL TEST

1. What is an example of a primary document?



CERTIFIED BIRTH CERTIFICATE – ISSUED BY A GOVERNMENT BUREAU OF VITAL STATISTICS

STATE OF MINNESOTA
CERTIFICATION OF VITAL RECORD

CERTIFICATE OF BIRTH

STATE FILE NUMBER 1949-MN-020810

FULL NAME JOHN ARTHUR MCEACHRAN

DATE OF BIRTH SEPTEMBER 18, 1949

SEX MALE

PLACE OF BIRTH MINNEAPOLIS HENNEPIN MINNESOTA

PARENT ELAINE

NAME AT BIRTH HAUGEN

PARENT DONALD J MCEACHRAN

ANY AMENDMENT MADE PRIOR TO 01/01/2001 FOR THIS RECORD IS NOT NOTED ON THIS CERTIFICATE.

THE GREAT SEAL OF THE STATE OF MINNESOTA

THIS IS A TRUE AND CORRECT RECORD OF BIRTH REGISTERED IN THE MINNESOTA OFFICE OF THE STATE REGISTRAR.

MR&C Certificate ID 7278400

FILED OCTOBER 03, 1949

Steve Elkins
STEVE ELKINS
STATE REGISTRAR

ISSUED SEPTEMBER 18, 2011 OTTER TAIL COUNTY RECORDER

THIS CERTIFICATE IS VALID ONLY WHEN REPRODUCED ON WATERMARKED SECURITY PAPER WITH RAISED BORDER AND DAISED STATE SEAL OF MINN. 1910.

**HOW MANY TEENAGE PASSENGERS CAN BE IN THE
CAR DURING THE FIRST 6 MONTH OF A
PROVISIONAL LICENSE?**



1 Under 20



WHAT IS THE NIGHT TIME CURFEW THE FIRST 6 MONTH OF A PROVISIONAL LICENSE.



No driving from midnight to 5 AM



Vanessa's Law: If an unlicensed teen driver has a crash related moving violation or alcohol - controlled substance violation the cannot be licensed until_____.



18 years old



diverging diamond interchange

Eliminates left turns across traffic

Lanes



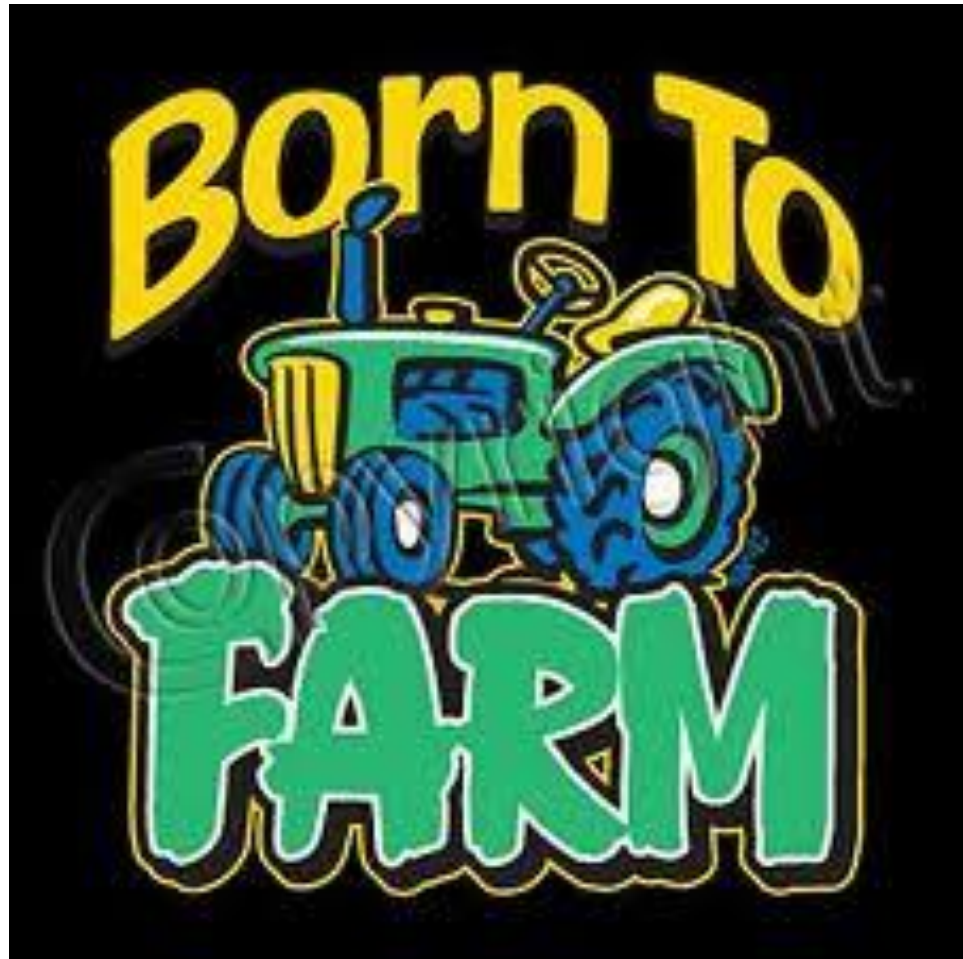
Crossing a rural divided highway using a Reduced Conflict Intersection



**HOW OLD DO YOU HAVE TO BE TO GET A
RESTRICTED WORK FARM LICENSE?**



15 years old



KEEPING YOU VEHICLE PROPERLY TUNED CAN IMPROVE GAS MILEAGE?

True or False



True



**A TIRE IS ILLEGAL IF THE TREAD IS LESS
THAN ____.**



1/16TH INCH

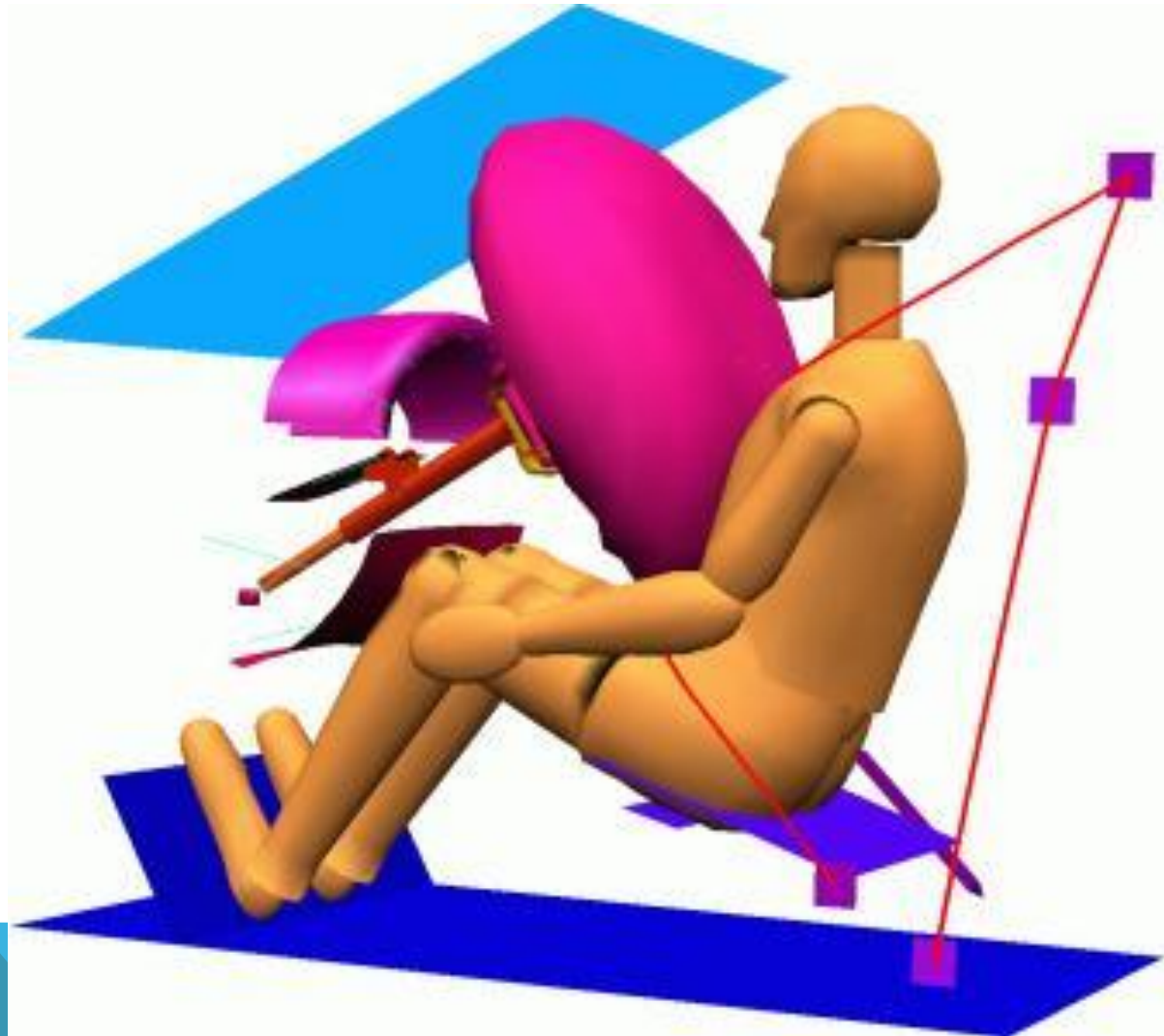


Airbags are intended to work with seat belts to prevent injuries.

True or false



TRUE



You need a motorcycle endorsement to drive an autocycle. True or False



False



Basic speed law: Never drive faster than reasonable for existing conditions.

If the speed limit is 55 mph you may drive 55 at all times.

True or false



FALSE



**TRUE OR FALSE
YOU MAY DRIVE 55 WHERE THIS
SIGN IS POSTED.**



False

It is a MN state route marker



TRUE OR FALSE

It is illegal to drive slower than the minimum speed under ideal conditions.



TRUE



**Fines are doubles in work zones when
workers are present.**

True or False



FALSE



**Signal at least 100 feet before
you turn.**

True or False



TRUE



1. Vehicles on the roundabout have the right-of-way.

2. At a roundabout, the vehicles on must yield the right-of-way to the vehicle approaching.

True or False



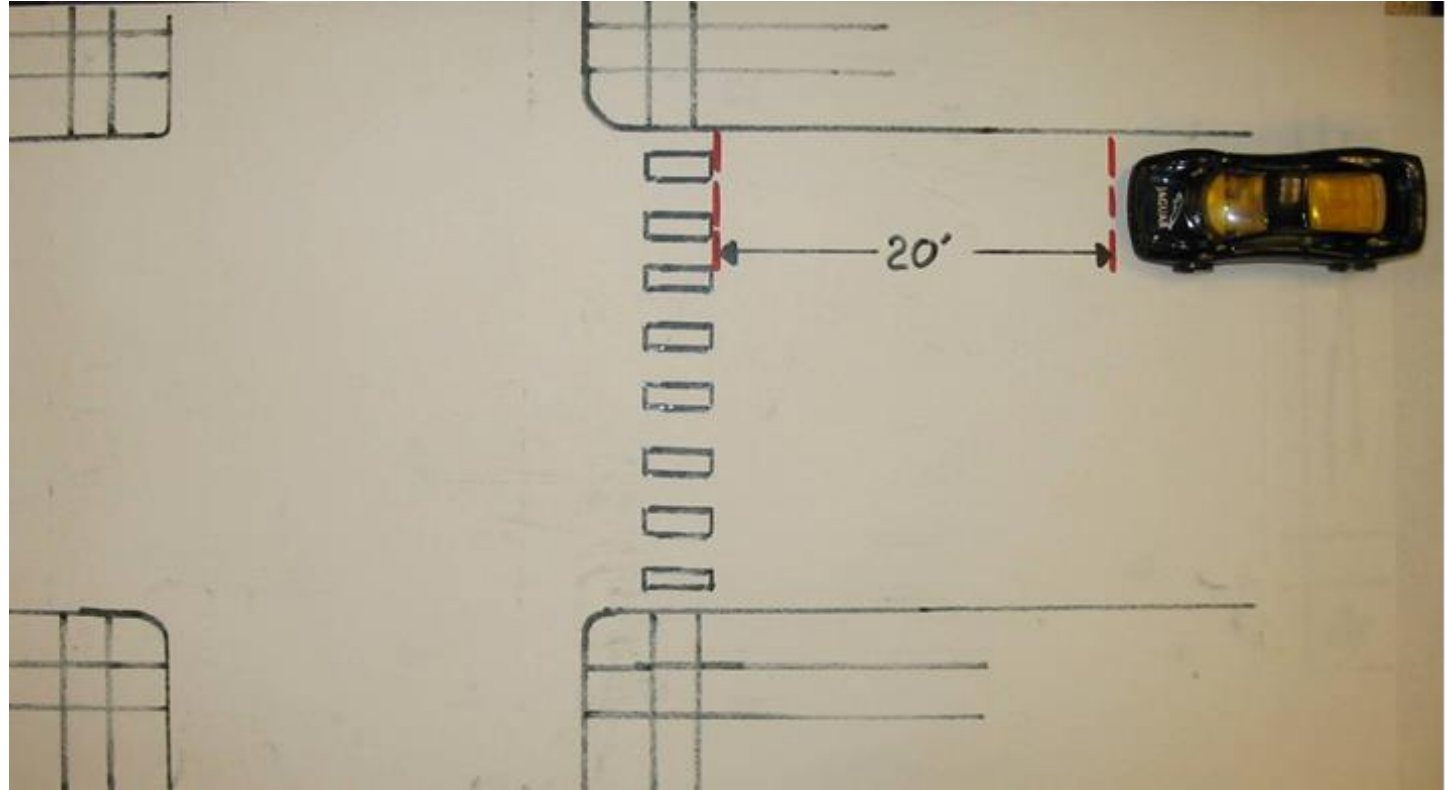
1. TRUE
2. FALSE



**You may park your car _____ feet
from a cross walk**



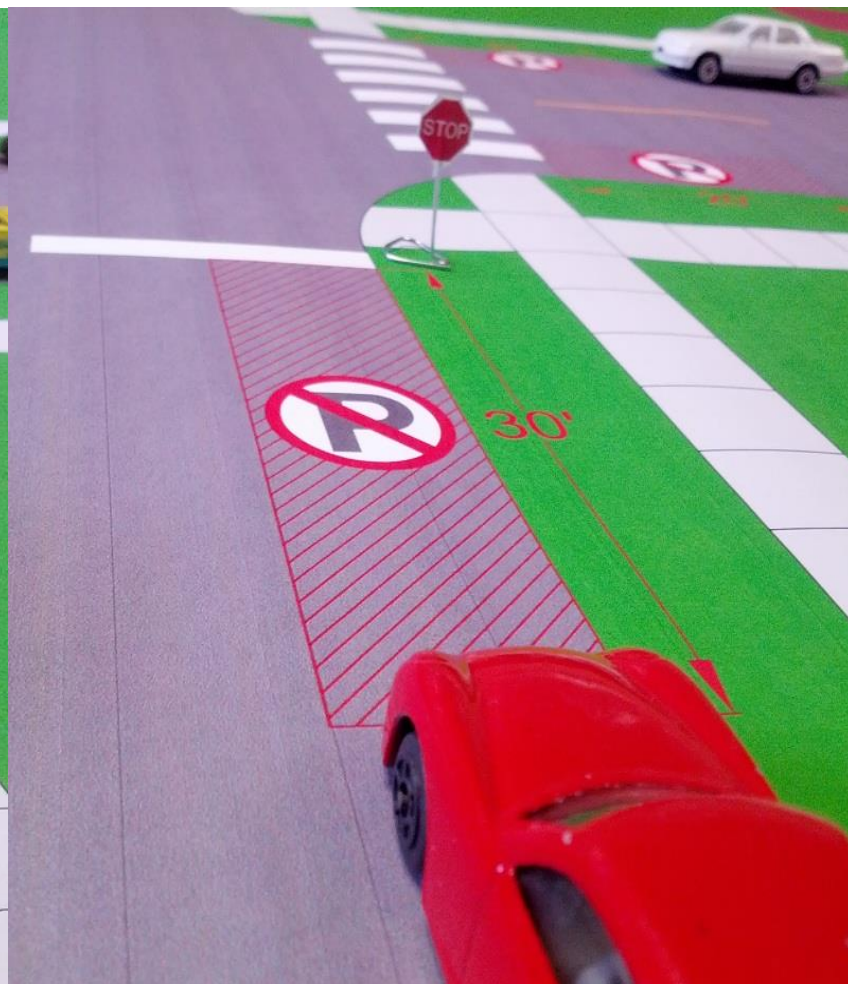
20 FEET



**You may park your car _____ feet
from a signal light.**



30 FEET



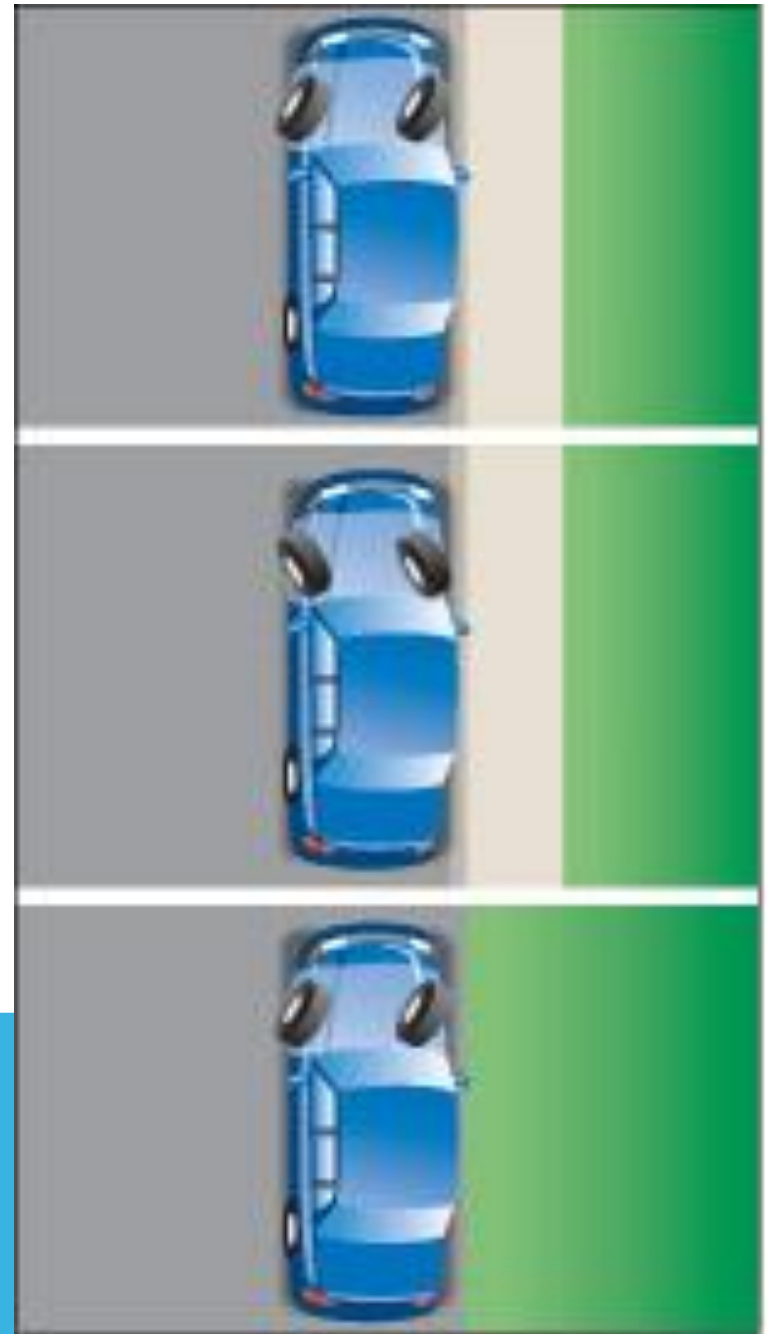
**Which way do you turn your wheels
when parking on a hill?**



Down hill with a curb

Up hill with a curb

**UP AND DOWN HILL
WITHOUT A CURB**



If you do not wear your seat belt your chance of being killed or injured are ___ time greater than if you were buckled in?



4 TIMES GREATER



**You could be killed at speed as slow as
_____ mph if you are not buckled in.**




12 MPH

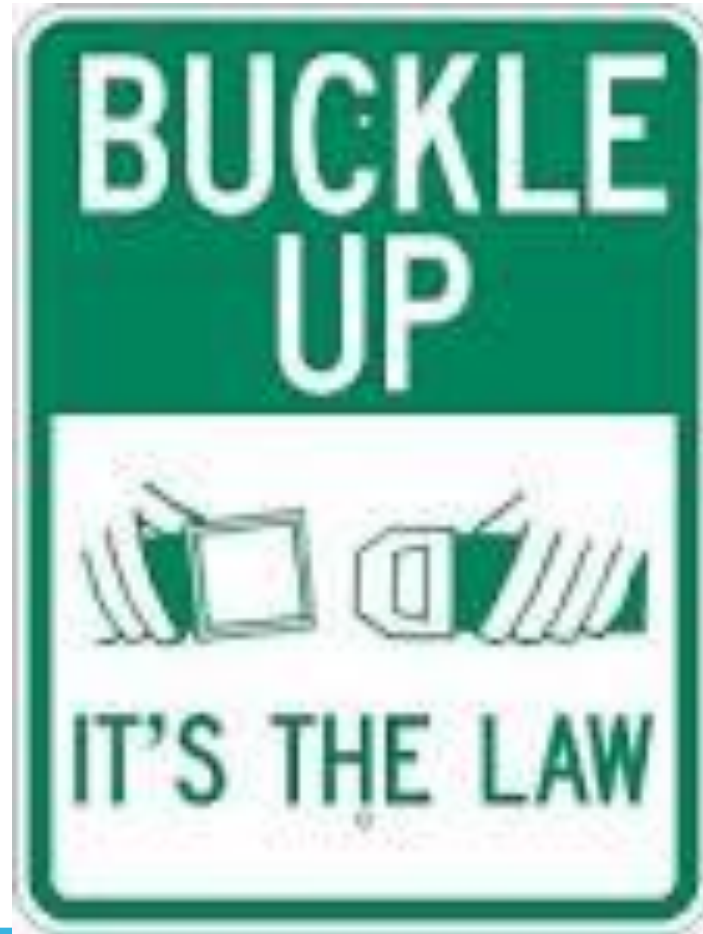


Minnesota has a mandatory seat belt law.

Primary seat belt laws allow law enforcement officers to ticket a driver or passenger for not wearing a seat belt, without any other traffic offense taking place.



TRUE



TRUE OR FALSE


When parking up hill with a curb, the rear portion of your front tire should be near the curb.



TRUE



It is illegal to park

- A. In front of a fire hydrant
 - B. Next to a yellow curb
 - C. In front of a bank
 - D. Both A & B
- 

BOTH A & B



Treat a flashing red light like a



STOP SIGN



**HOW FAR MUST YOU STOP FROM A SCHOOL BUS
WHEN RED LIGHTS ARE FLASHING AND STOP
ARM IS OUT?**



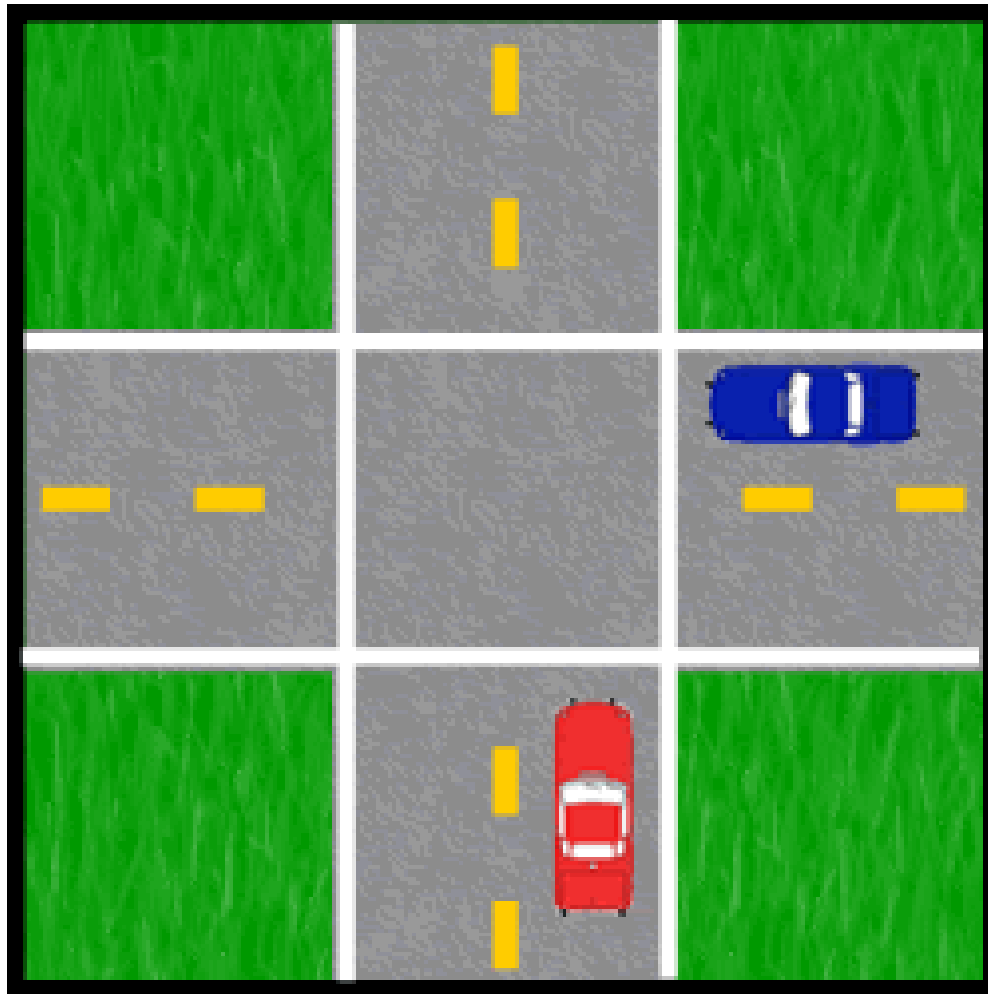
20 FEET



Right of way: If two cars approach an intersection at the same time the driver on the right must yield to the vehicle on the left.



FALSE



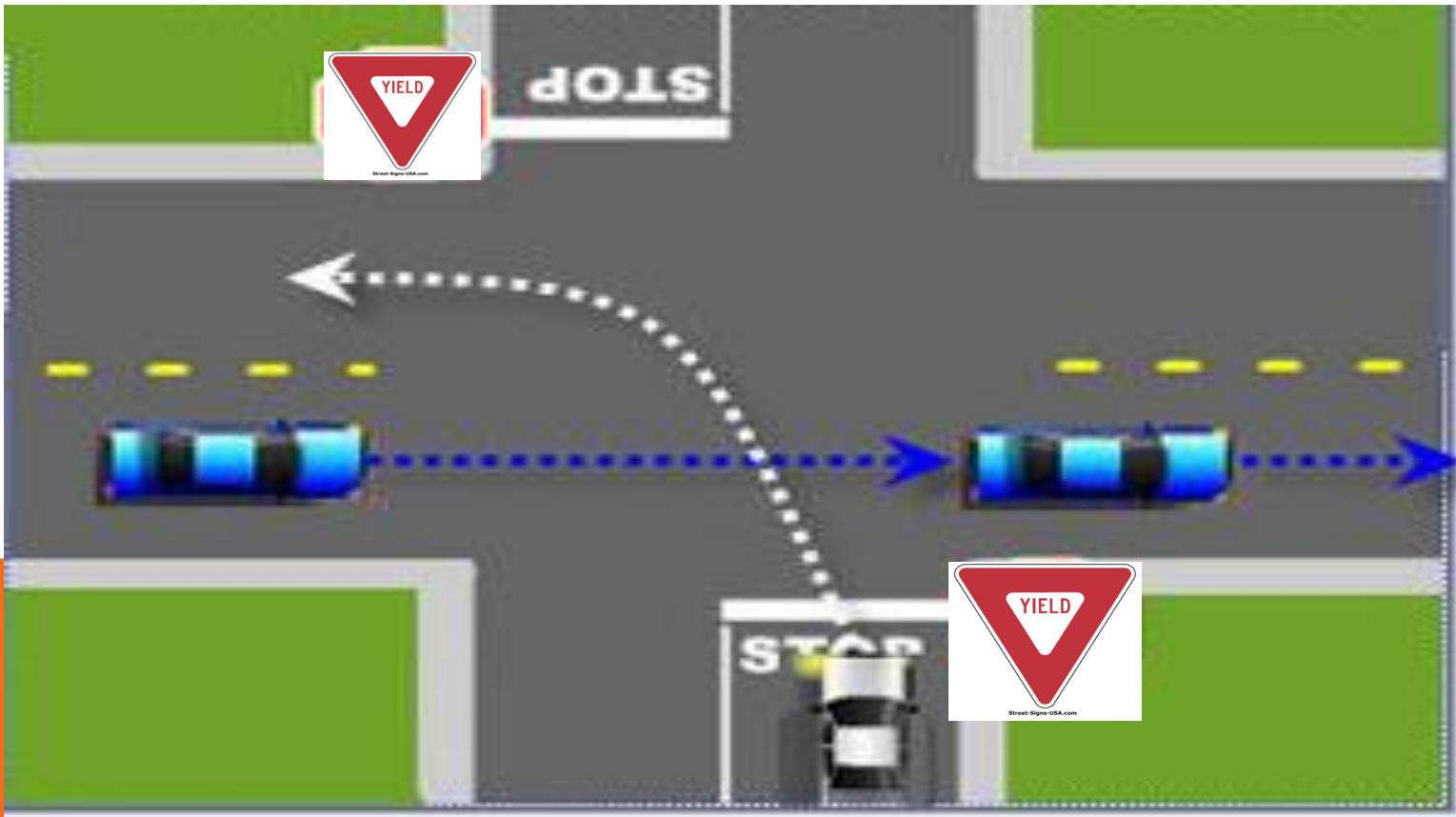
Red car yields
to the blue car

The driver of the car on the left
must yield to the car on the
right.

**You are approaching a yield sign
and a vehicle is approaching on
your left. Who has the right-of-
away?**



**THE VEHICLE ON THE LEFT HAS THE RIGHT-OF-WAY
BECAUSE YOU ARE FACING A YIELD SIGN.**



**Always stop for pedestrians in
marked or unmarked crosswalks.**



TRUE



What is the “Move Over Law”



Minnesota Move over law



How far should you position yourself from the steering wheel if your car is equipped with an airbag?



10 INCHES



**When passing a bike stay at
least _____ feet away.**



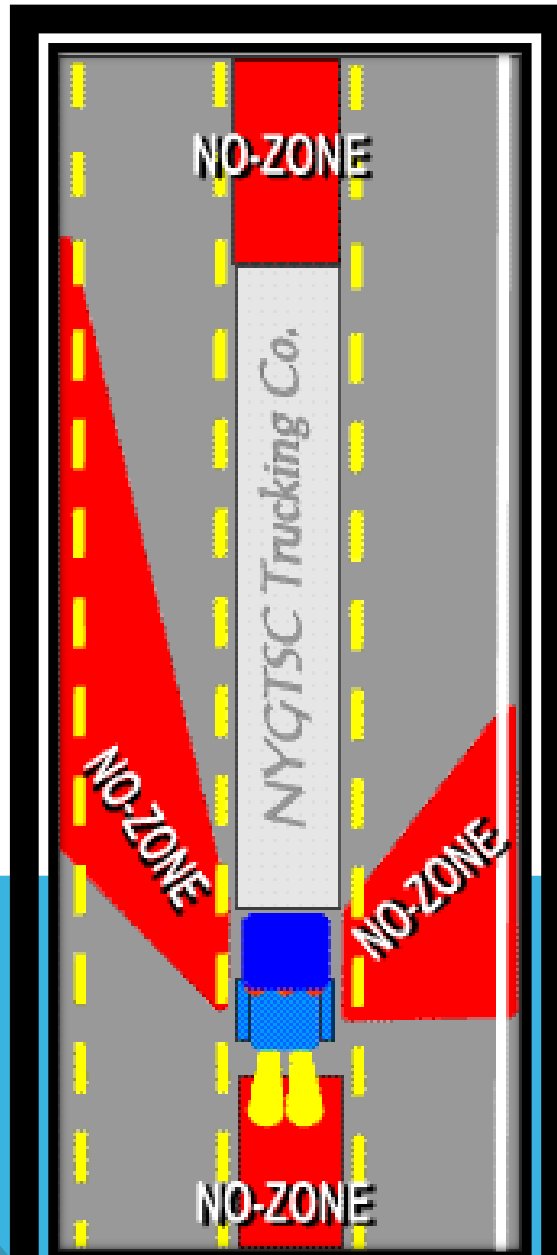
3 FEET



What is the no-zone?



BLIND SPOTS ON A COMMERCIAL VEHICLE



**Stop your vehicle at least ____
feet from the nearest rail at a
railroad crossing.**



10 FEET



**Stop at least 10 feet from
the nearest rail or gate.**

**Know the colors and shapes.
Know what the divided highway
signs look like and means.**





A horse drawn vehicle must have a slow-moving vehicle emblem on when using public roads.



TRUE



Orange signs mean road work.



TRUE



**The color red is commonly
found on warning signs.**



FALSE

RED IS FOUND ON REGULATORY SIGNS



Street-Signs-USA.com



Where do you find “one car on green” signs?



FREEWAY RAMP METERS



**Know what the solid yellow
lines mean**



NO PASSING



**When an officer is present,
obey any hand signal you are
given rather than signs and
signals.**



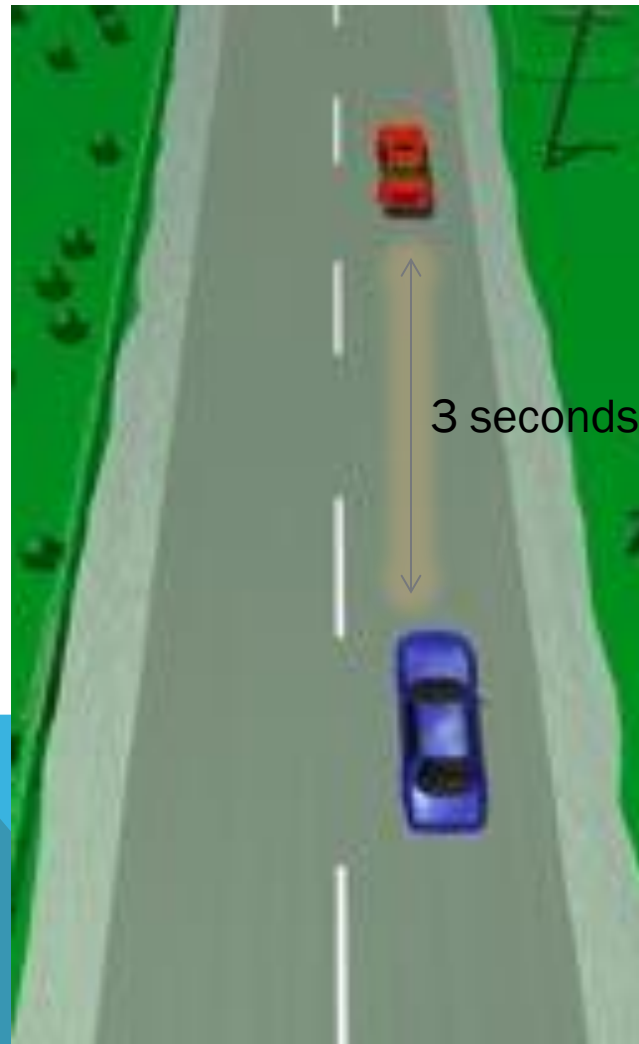
TRUE



What is the 3 second rule?



SAFE FOLLOWING DISTANCE IN IDEAL CONDITIONS



The length of time from perception of danger to using the brakes happens in ____ second.

Reaction time



$\frac{3}{4}$ SECOND



**When should high beams be
turned off?**

When following :

Oncoming vehicle:



200 WHEN FOLLOWING
1000 WHEN ONCOMING



What is the AMBER ALERT



CHILD ABDUCTION

CALL 911 IF YOU HAVE INFORMATION

A digital sign with a black background and a grid pattern, displaying the words "AMBER" and "ALERT" in bright orange, pixelated capital letters. The sign is centered in the lower half of the slide. The slide also features a white background at the top and bottom, with a blue triangle in the bottom-left corner and an orange triangle in the bottom-right corner.

**AMBER
ALERT**

Who can use HOV lanes?

**Remember a motorcycle can use
the HOV lane**





Distracted driving page 74.
Certain driver behaviors are
illegal.

Using the cell phone to text is
illegal.



TRUE - EVEN WHEN STOPPED IN TRAFFIC



To reduce glare from behind you should:


- A. Look to the right side of the road**
- B. look to the left side of the road.**
- C. Adjust the day-night mirror**
- D. Keep you eyes and head up**



Adjust the day-night mirror



The best place for a child to ride in a vehicle is:

- A. Front seat**
 - B. In the cargo area**
 - C. On an adult passengers lap**
 - D. Back seat**
- 

BACK SEAT



**When should you avoid using
cruise control?**



ON ICY ROADS



If you feel tired while driving, the best thing you can do is:

A. Drink some coffee

B. Open the window and get some fresh air.

C. Listen to the radio and sing along.

D. Stop and get some rest



D. Stop and get some rest



At what speed could your vehicle begin to hydroplane?



Any speed if the water depth is greater than the tread on your tires.



**Carbon monoxide can render
you unconscious in just a few
minutes.**



TRUE



A teenage boy was overcome by carbon monoxide while sitting in a running car

TRUE OR FALSE

**Motorcycles are not allowed in
HOV lanes.**



FALSE



**If you violate the school bus law
your license will be**

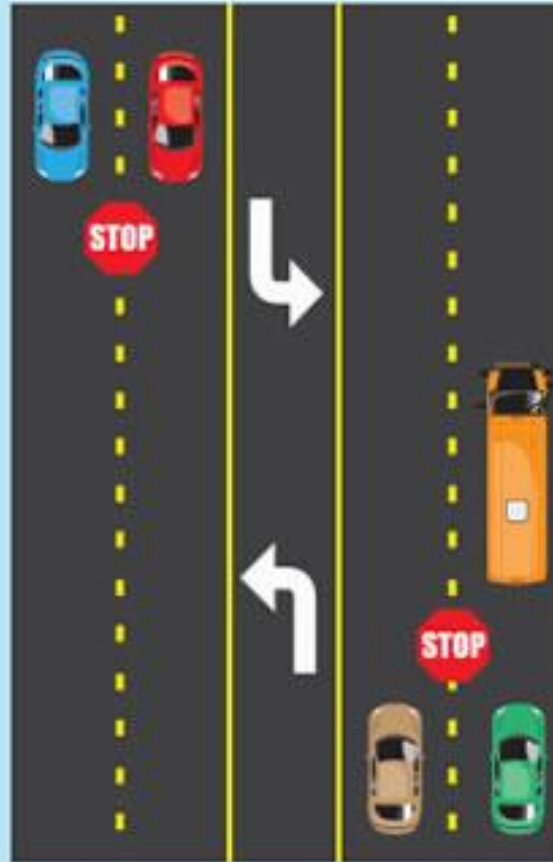
_____.



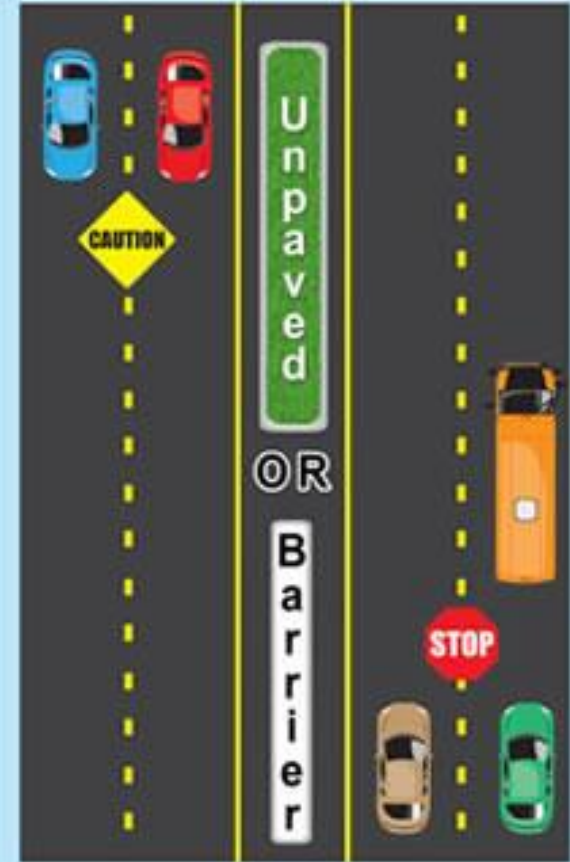
SUSPENDED



TWO-LANE:
Vehicles traveling
in both directions
MUST stop



MULTI-LANE Paved Across:
Vehicles traveling in both
directions **MUST stop**



DIVIDED HIGHWAY
Unpaved space (Min 5ft) OR any raised median/physical barrier.
Vehicles behind bus **MUST stop**.
Vehicles traveling in the opposite
direction proceed with caution.

**If you are convicted of Under
age drinking your license will be**

Venessa's law



SUSPENDED



**If you are convicted of DWI
your license will be**



REVOCATION



If you are convicted of driving in excess of 100 mph your license will be _____.



6 MONTH REVOCATION



**Alcohol acts on the
central nervous system
as a stimulant.**

T or F



FALSE



Alcohol is a depressant

One of the first things effected by alcohol is judgment.



TRUE



The second offense for underage drinking is lose of license for 180 day.



TRUE

The first offense is 30 days



**You can designate DONOR
on you license**



TRUE



**If you are under 18 you must
have parental approval to
become a donor.**



TRUE



Give thanks. Give life.

**The donor on your license
serves as your consent.**



TRUE



**When you approach a T-intersection
what must you prepare to do?**



A diagram of a T-intersection. A horizontal road with a double yellow center line meets a vertical road. The vertical road has a yellow-paved section at the intersection labeled "Suggested Mountable Curb". Four red octagonal "STOP" signs are placed at the corners of the intersection. Four yellow diamond-shaped "T" signs are also placed at the corners, with arrows pointing towards the intersection. A yellow rectangular sign with a black double-headed arrow is positioned above the horizontal road. Two yellow diamond-shaped signs with a black arrow pointing up and a red circle are positioned below the vertical road. The labels "FIRST ST" are placed vertically on the left and right sides of the horizontal road.

**Who has the right of way
at a T intersection?**



THE CARS AT THE TOP OF THE (T)

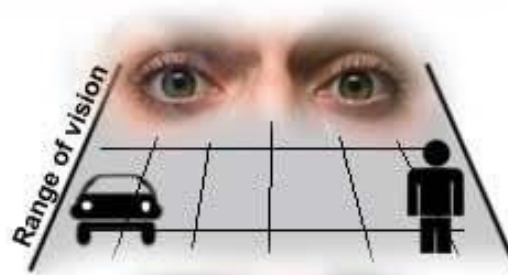


How is your vision effected by alcohol



DECREASE PERIPHERAL VISION AT HIGH CONCENTRATIONS YOU MAY GET BLURRED VISION.

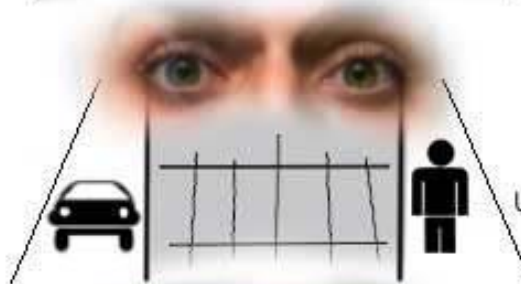
Effects of alcohol on vision



No alcohol

Good peripheral vision

This is very important for driving and seeing passing and parked cars and pedestrians



After 5 - 6 units

Impaired peripheral vision

Blurred vision

Unable to see cars or pedestrians



After 8-10 units

Tunnel vision

Night vision

Night blindness

**A bottle of 80 proof whiskey
contains _____ % alcohol**



40%

One mixed drink with
• 1.5 fl oz (44 mL)
of 80-proof liquor
(such as vodka,
gin, scotch, bourbon,
brandy, or rum)



5 fl oz (148 mL)
of wine



12 fl oz (355 mL) of
beer or wine cooler

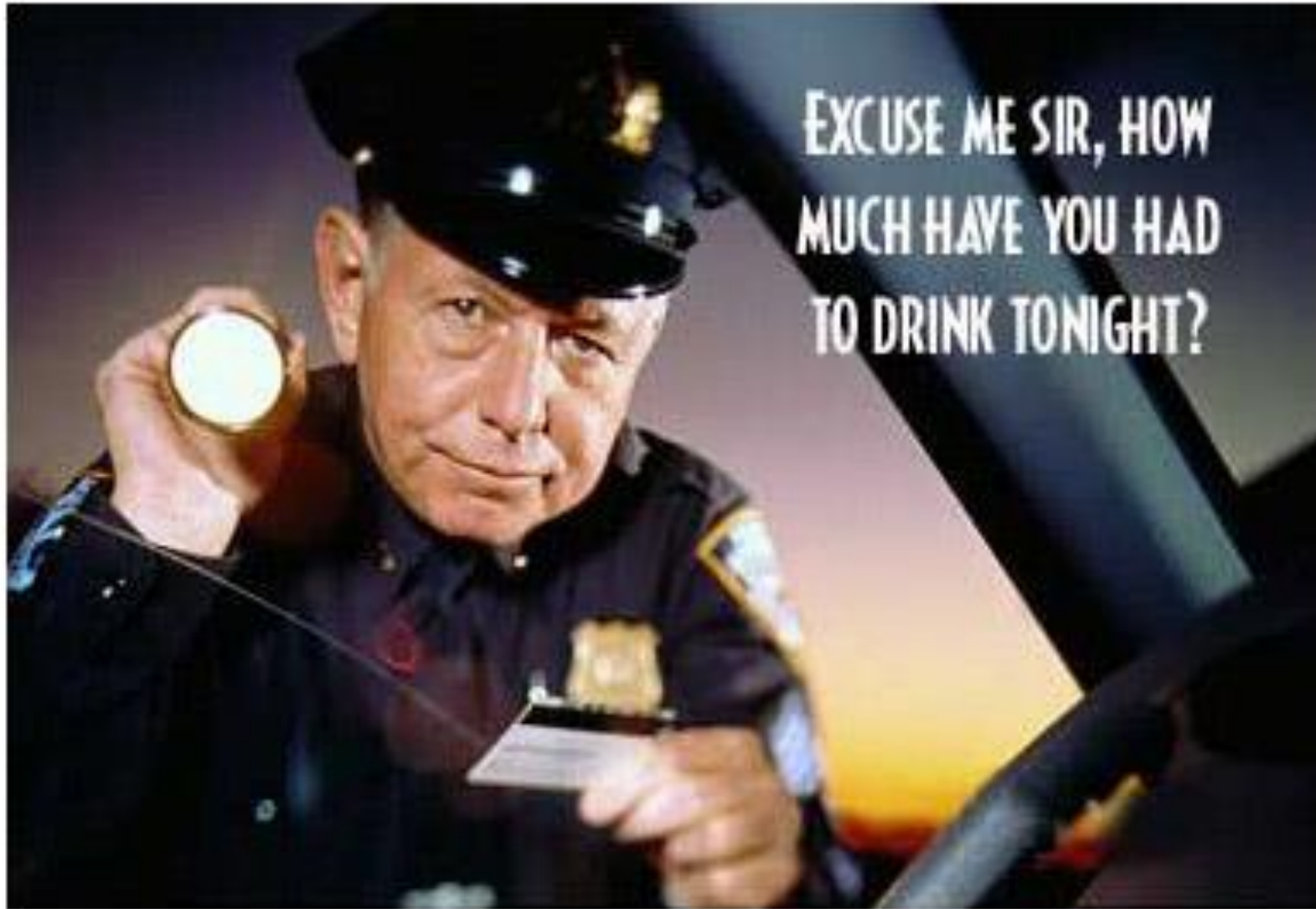


© Healthwise, Incorporated

If alcohol has caused the driver to make driving errors he could be convicted of DWI at an alcohol concentration as low as ____.



.04%



It is unlawful to have an open bottle inside a motor vehicle when it is on the public roads and highways.



TRUE



When walking stay on the left side facing traffic.



TRUE



**It is illegal bicycles to ride a
bicycle at night.**



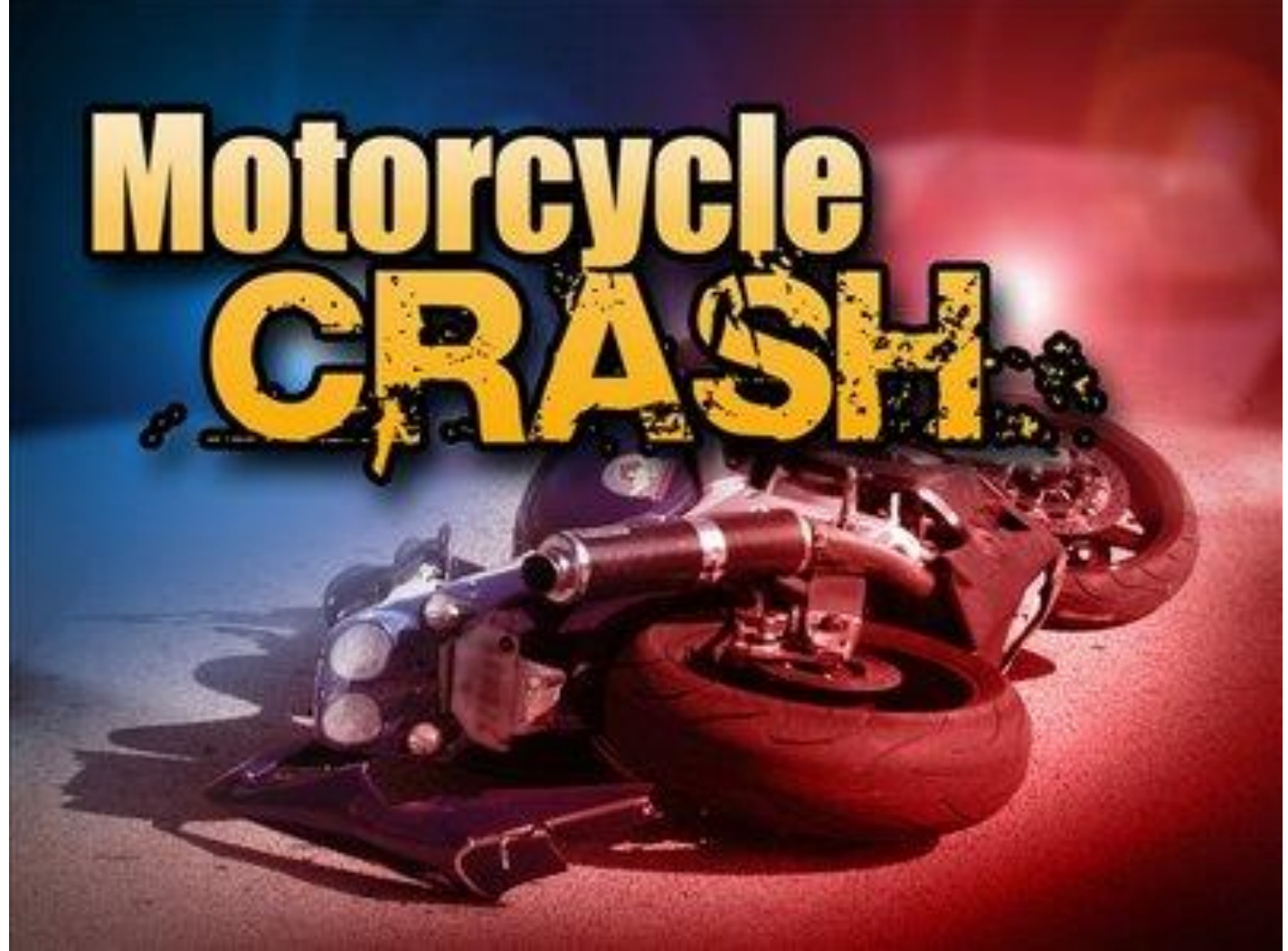
FALSE



Many motorcycle - vehicle crashes are caused when the driver fails to yield to the motorcycle and turn left in front of them.



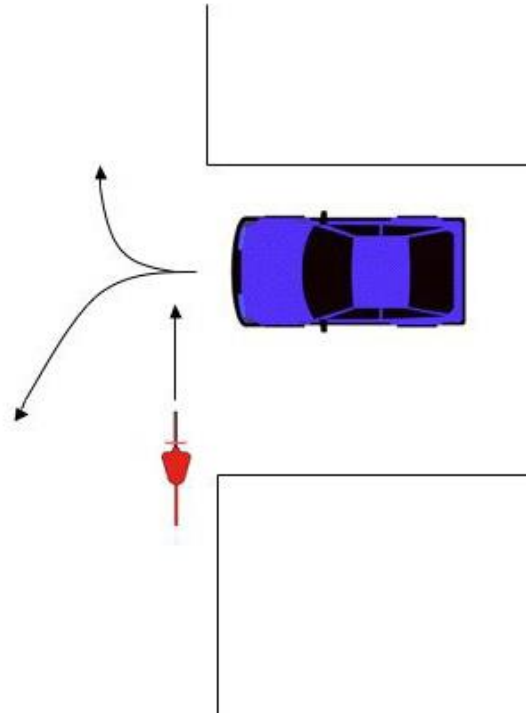
TRUE



**When coming out of a driveway
or ally you must come to a
complete stop.**



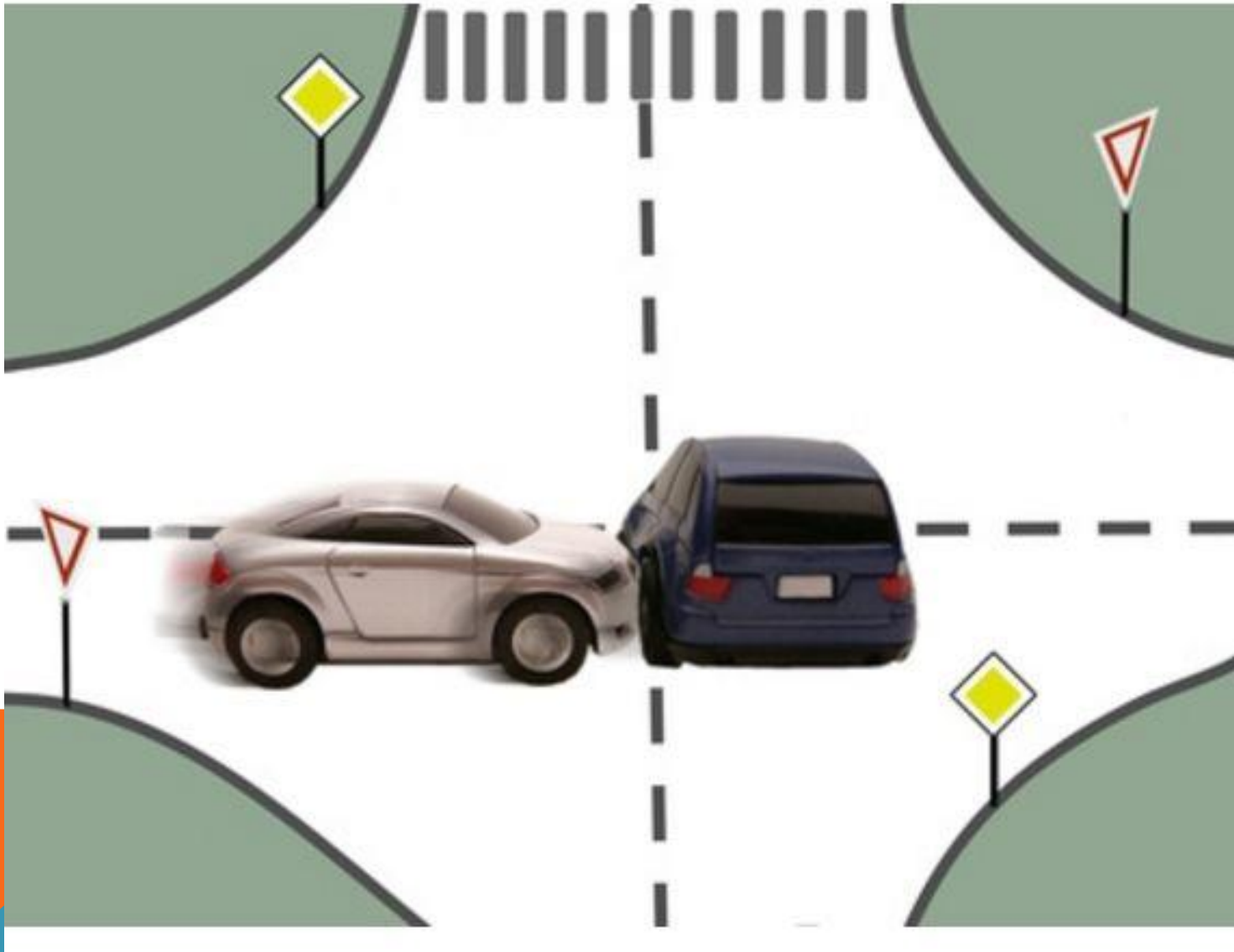
TRUE



**Owners of motor vehicles driven
on public roads must carry
_____ and
_____ insurance.**



NO-FAULT AND LIABILITY

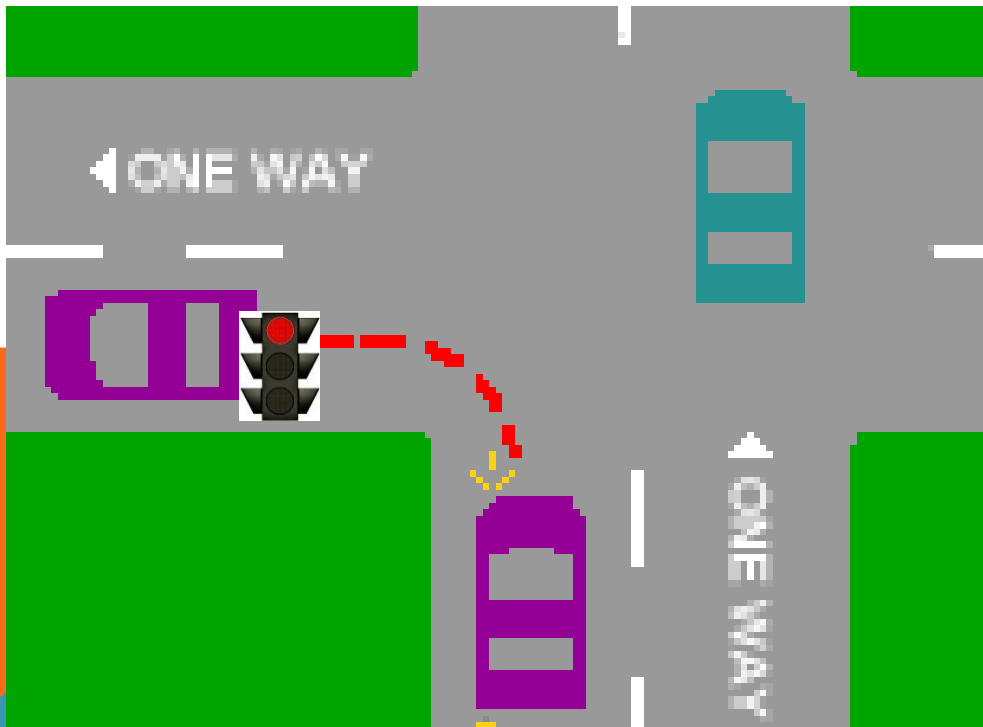


When can you turn on red?



You can turn right on red as long as there is no sign prohibiting the turn

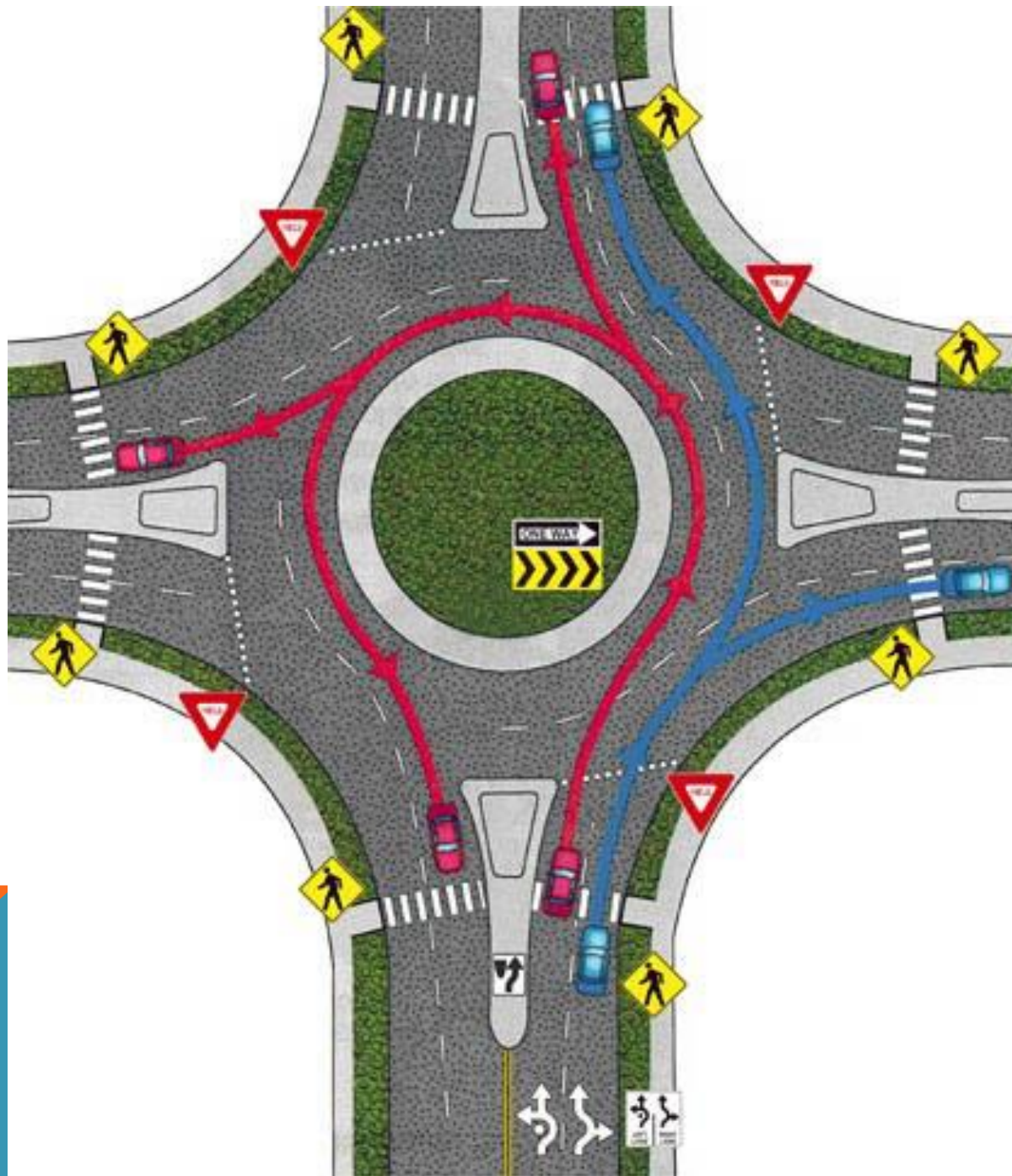
Remember you may turn left on a red light if you are on a one-way street turning on to another one way street.



**Do not pass or change lanes in
a roundabout.**



TRUE



**You must provide you SSN
on the application forms.**



TRUE



Ignition interlock device program

**Optional on 1st offense with a BAC of
.16 or higher or the second offense.**

**It is mandatory on the third offense
(when your license is cancelled)**



TRUE




**YOU MUST YIELD TO A TRANSIT BUS
PULLING AWAY FROM THE CURB.
T OR F**



True

Remember transit busses can drive on the shoulder

Drivers of buses being operated on the shoulder may not exceed the speed of main-line traffic by more than 15 miles per hour and may never exceed 35 miles per hour.



**If you are convicted of fleeing a
police officer, your license will be**


_____.



Revoked (revocation)



When is it permissible to make a left turn on a red light?

- A. When there is a “no turn on red” sign**
 - B. When ever traffic is light and it can be done safely.**
 - C. When turning from a one way onto a one way**
 - D. You cannot turn left on a red light**
- 

You can turn left if you are on a one way turning onto another one way



What is the proper hand position on the steering wheel?

- a. 10 & 2 o'clock**
- b. 8 & 4 o'clock**
- c. 9 & 3 o'clock**
- d. Both b & c are correct**



a. Both b & c are correct



Hand Position for Steering

- Image steering wheel as a clock
- Place hands at 9 and 3 o'clock or 8 and 4
 - Avoid injury if air bag deploys
- Keep knuckles and thumbs on the outside of the rim
 - Reduce injury in collision



GOOD LUCK ON YOUR TEST!!

STUDY HARD