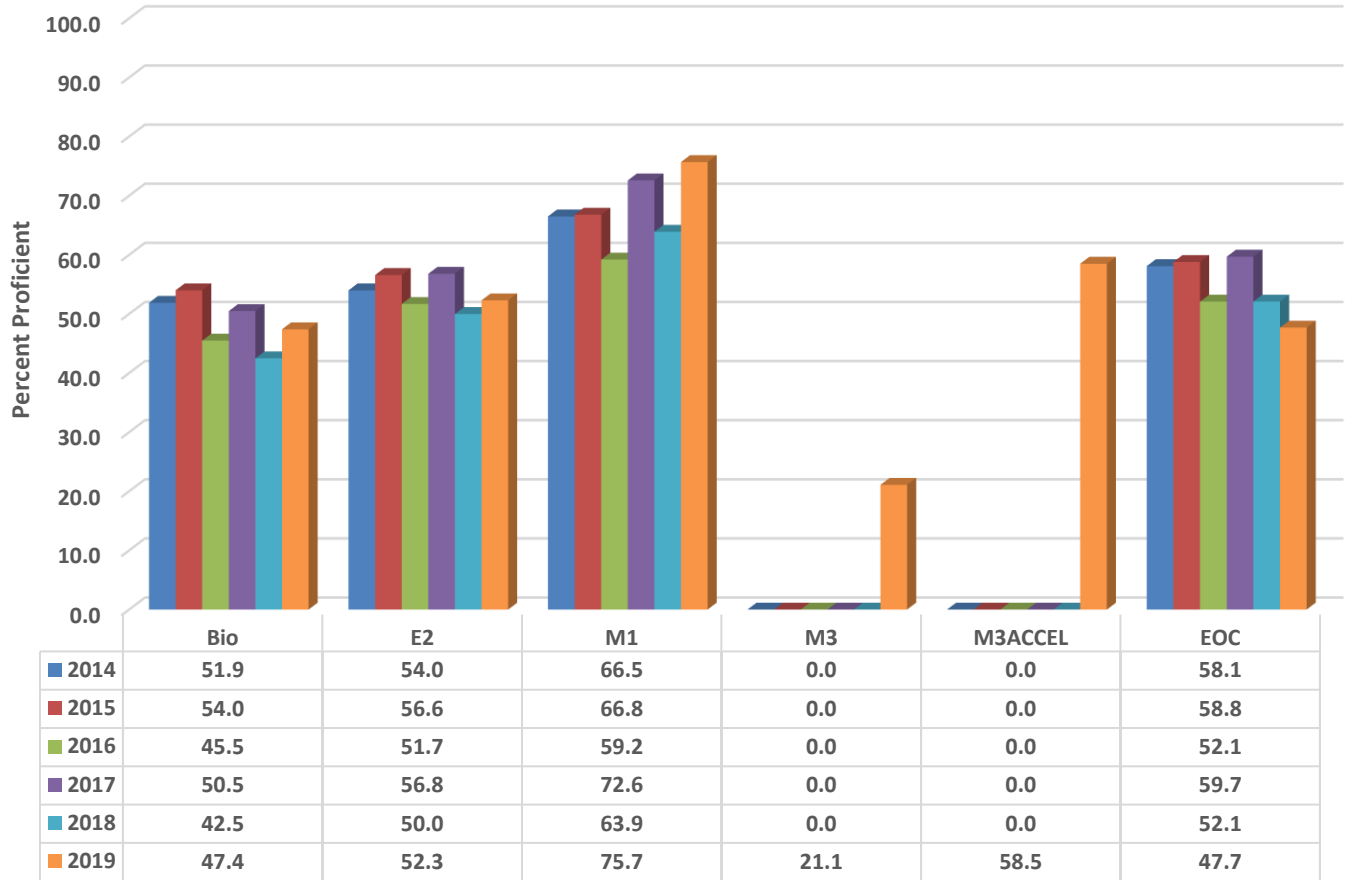


Trinity High Six Year Comparison Using GLP



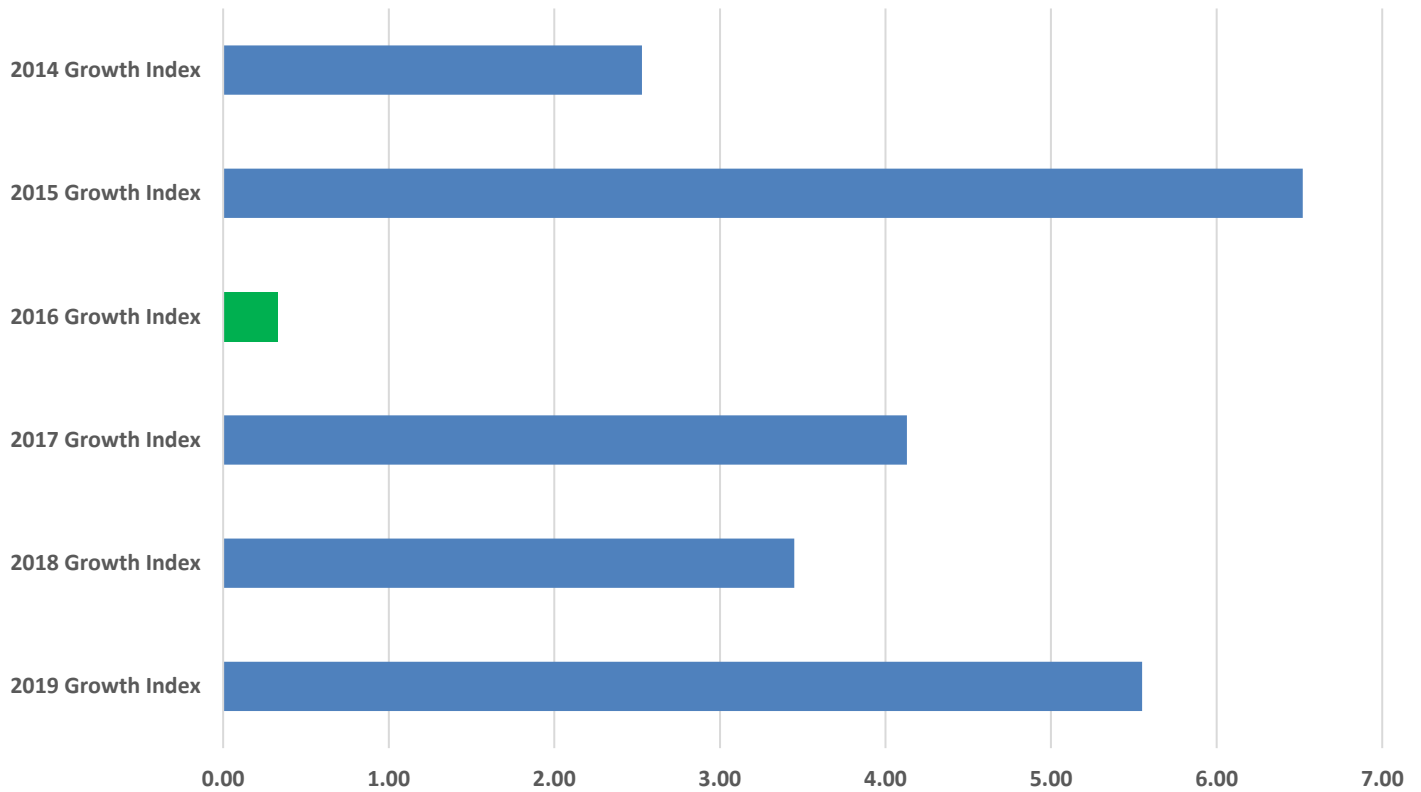
READY Accountability Model

	CCR Denominator	CCR Percent	GLP Denominator	GLP Percent
2014	582	44.7	582	58.2
2015	677	47.3	677	58.8
2016	599	42.6	599	52.1
2017	561	47.1	561	59.7
2018	553	41.0	553	52.1
2019	654	30.1	654	47.7

Growth and Participation Targets

	Growth Status	Total Targets	Targets Met	Target Percent
2014	Exceeded Expected Growth	40	34	85.0
2015	Exceeded Expected Growth	40	31	77.5
2016	Met Expected Growth	21	21	100.0
2017	Exceeded Expected Growth	21	21	100.0
2018	Exceeded Expected Growth	15	15	100.0
2019	Exceeded Expected Growth	14	14	100.0

Trinity High Six Year Growth Trend



	2019 Growth Index	2018 Growth Index	2017 Growth Index	2016 Growth Index	2015 Growth Index	2014 Growth Index
■ THS	5.55	3.45	4.13	0.33	6.52	2.53

Growth Index

	School Accountability Type	Index	Level
2014	Math I, Biology, and English II	2.53	Exceeded Expected Growth
2015	Math I, Biology, and English II	6.52	Exceeded Expected Growth
2016	Math I, Biology, and English II	0.33	Met Expected Growth
2017	Math I, Biology, and English II	4.13	Exceeded Expected Growth
2018	NC Math I, Biology, and English II	3.45	Exceeded Expected Growth
2019	NC Math I, NC Math III, Biology, and English II	5.55	Exceeded Expected Growth