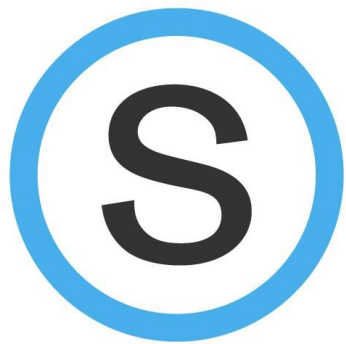


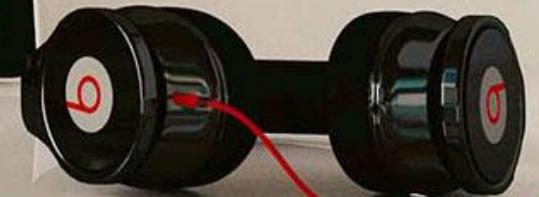
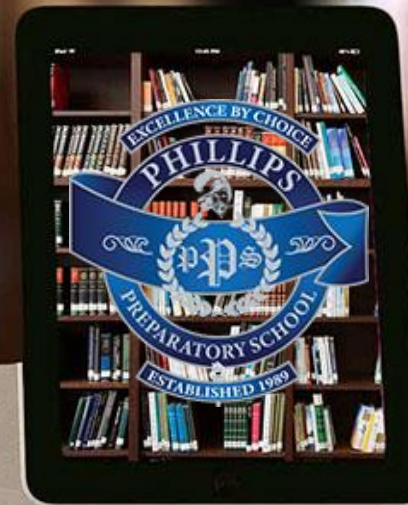
WELCOME TO PHILLIPS!

PARENT MEETING AND MEET THE TEACHER

AUGUST 25, 2020



schoolology®



The Winds of Change

“I can't change the direction of the wind, but I can adjust my sails to always reach my destination.” -Jimmy Dean

Principal A. Dennis



Asst. Principal J. Dudley-Lewis



Asst. Principal R. Raulerson



Learner Expectations



- Meet Magnet Requirements
- Follow IB Learner Profile
- Actively Participate
(Remotely and On-Campus)
- Prepare Materials
- Promote Academic Honesty
- Request Help When Needed

Remote Learning — Schoology

**Teachers Instruct
From Their
Classrooms**

**Live Instruction On
Google Meet for First
30 Minutes of Class**

**Course Material,
Assignments, And
Assessments All
Through Schoology**

**Parent-Teacher
Conferences Via Google
Meet and Weekly
Progress Emails Through
Schoology**



Daily Schedule



If students have questions or need additional help, they can stay in the live instruction session with their teacher or email the teacher your questions. Your teacher may schedule an appointment to assist you.

Prepare to login 7:20- 7:25

- Gather materials, go to mcpss.schoolology.com
- Login to Schoology with school email & password.
- Sign in to your 1st period class by 7:30 and wait for instructions.

Period 1: 7:31 - 8:23 (52)
Live instruction 7:31 -8:01
Online Assignments 8:02-8:23

Period 2: 8:26 - 9:18 (52)
Live instruction 8:28 -8:58
Online Assignments 8:59-9:18

Period 3: 9:21 - 10:13 (52)
Live instruction 9:23 -9:53
Online Assignments 9:54-10:13

Restroom 10:13-10:17



6 th Grade	1st Lunch Wave 10:20-10:45 (25)	Period 4 10:48-11:40 (52) Live Instr. 10:50-11:20 Online Lesson 11:21-11:40	Period 5 11:43-12:35 (52) Live Instr. 11:45-12:15 Online Lesson 12:16-12:35
7 th Grade	Period 4 10:20 -11:12 (52) Live Instr. 10:22-10:52 Online Lesson 10:53-11:12	2nd Lunch Wave 11:15-11:40 (25)	Period 5 11:43-12:35 (52) Live Instr. 11:45-12:15 Online Lesson 12:15-12:35
8 th Grade	Period 4 10:20 -11:12 (52) Live Instr. 10:22-10:52 Online Lesson 10:53-11:12	Period 5 11:15-12:07 (52) Live Instr. 11:17-11:47 Online Lesson 11:48-12:07	3rd Lunch Wave 12:10-12:35 (25)
		Period 6: 12:38-1:32 (54) Live instruction 12:40 -1:10 Online Assignments 1:12-1:32 Period 7: 1:35-2:30 (55) Live instruction 1:35 -2:05 Online Assignments 2:06-2:30	

Dismissal 2:30



Student Schedules

- Homeroom
- Seven Periods
- Counseling Course

Identifying Class Periods

The last digit of the numbers listed after the course name is the scheduled period.

A screenshot of a student dashboard interface. At the top, there is a dark blue navigation bar with a school logo and four tabs: "COURSES", "GROUPS", "RESOURCES", and "GRADES". Below this, there are two tabs: "RECENT ACTIVITY" and "COURSE DASHBOARD", with the latter being selected. The main area displays two course cards. The first card, titled "Accelerated Mathematics 7: 007", features an icon of a book and a pencil. The second card, titled "Civics 7 Adv: 013", features an image of the US Capitol dome and the text "We the People". In both cards, the last digit of the course number (7 and 3 respectively) is circled in red.

Period 7

Period 3

Attendance

- MCPSS Attendance Policy remains in effect.
- Students should follow their class schedule. **Attendance will be recorded by teachers in Schoology.** Attendance will be posted on the following school day.
- Daily log-in to Schoology will be required for all students during remote learning.
- Recordings will be available for students who are not able to follow the regular school schedule due to absence.



Remote Learning Support Help Line

Parents should call the school first for help with Remote Learning. Contact your school **first** for issues with Schoology during school hours, Monday – Friday.

Technical Support Hours will be from
8AM – 8 PM Monday – Friday
221-7777, option 1 for technical
assistance.



Electives and Athletics



- **Electives will be offered through Schoology for the first nine weeks.**
- **Middle school athletic programs are postponed until further notice.**
- **CDC and ALSDE guidelines will be followed.**
- **Measures to promote health and safety will be implemented.**

Academic Tutoring and Homework Help for students

FREE K-12
Academic Tutoring
& Homework
10:00 a.m. to 11:00 p.m



HOMework
ALABAMA

CAREER
ALABAMA

APLS LIBRARY
CATALOG

FIND YOUR
LOCAL LIBRARY

TUTOR.COM
STATS

HomeworkAlabama.org™



***Free Homework Help,
Tutoring and Test Prep
for Alabamians!***

Devices and Learning Resources Pick-Up



Schedule for Pick-up of Student Resources

Parents/Guardians may check out laptops and Wi-Fi hotspots for students if needed. Some courses will assign math textbooks. Students will receive math workbooks, planners, and schedules. Parents will drive to the front of the school (afternoon carpool lanes). Parents and students will remain in their vehicles. Pick up times are 8 a.m. - 11 a.m. and 12 p.m. - 3 p.m. on the date assigned.

6th Grade

**AUG
25**

-Phillips Carpool Lanes-

7th Grade

**AUG
27**

-Phillips Carpool Lanes-

8th Grade

**AUG
28**

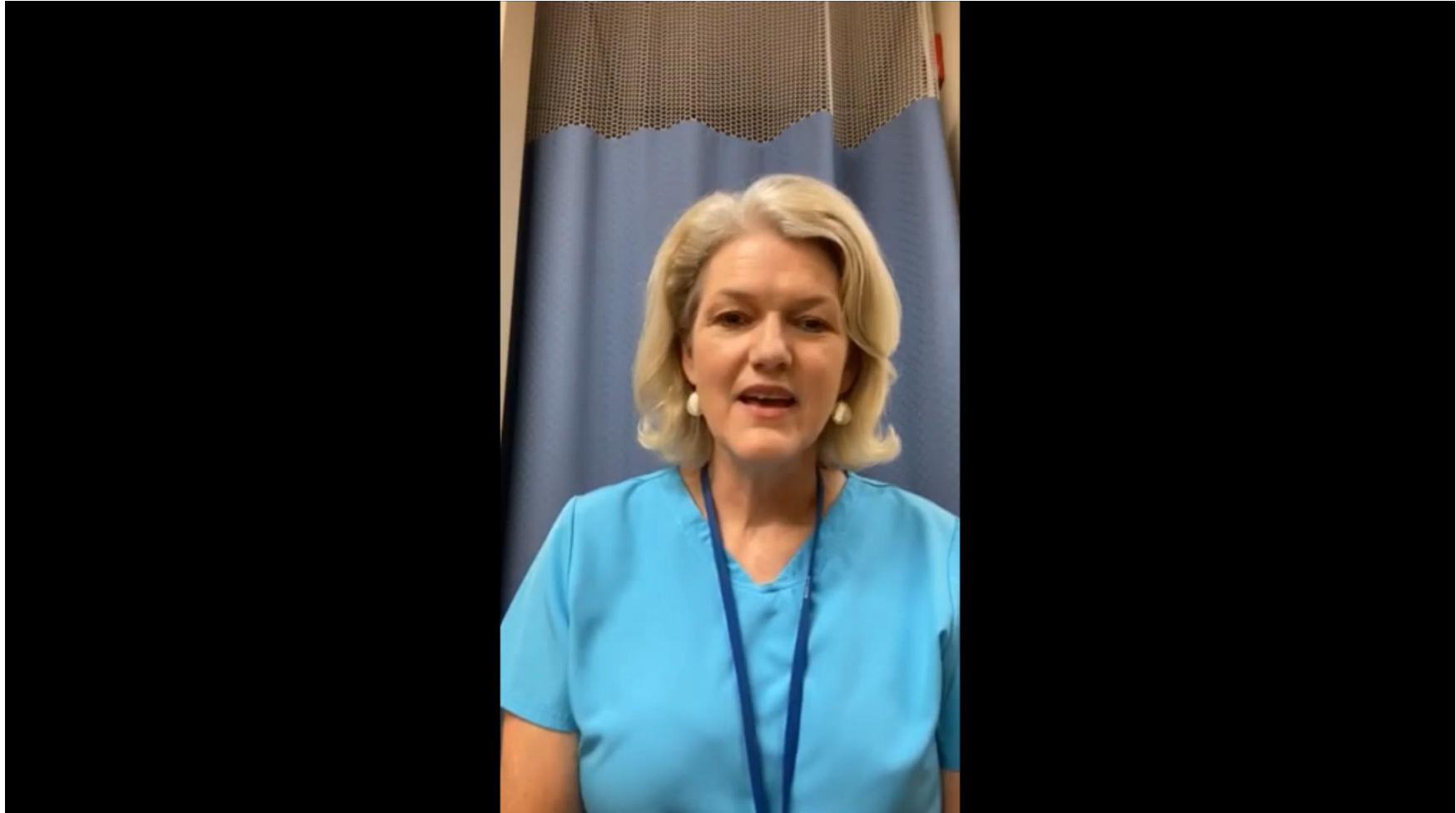
-Phillips Carpool Lanes-

- Face Masks
- Social Distancing
- Regular Hand Washing
- Sanitizing and Disinfecting Commonly Touched Surfaces



Health and Safety

Welcome Message from Nurse Campbell



BREAKFAST AND LUNCH



Mobile County
PUBLIC SCHOOLS

WE ARE PARTICIPATING
IN THE MCPSS FEEDING
PROGRAM, BEGINNING
ON **MONDAY, AUGUST 17.**

Breakfasts and lunches
may be picked up
curbside on Mondays for
MCPSS students for the
full week.



Phillips Preparatory will be giving out meals free-of-charge as part of the MCPSS Summer Feeding Program on Mondays from 9:30-12:30. Parents will pull-up behind the cafeteria and pick up 1 ready to eat breakfast and lunch. The other 4 meals that are being provided will need to be refrigerated immediately. Parents must stay in their cars at all times. Beginning September 1st, you must have your students' lunch numbers to pick up the meals. We look forward to serving our children.

Counseling and Support Services

GOALS PLANNING SUCCESS

Our comprehensive middle school guidance program includes the following student services:

- Individual counseling
- Group counseling
- Educational and career information
- School orientation to include crisis, facilitative, preventive, and developmental counseling

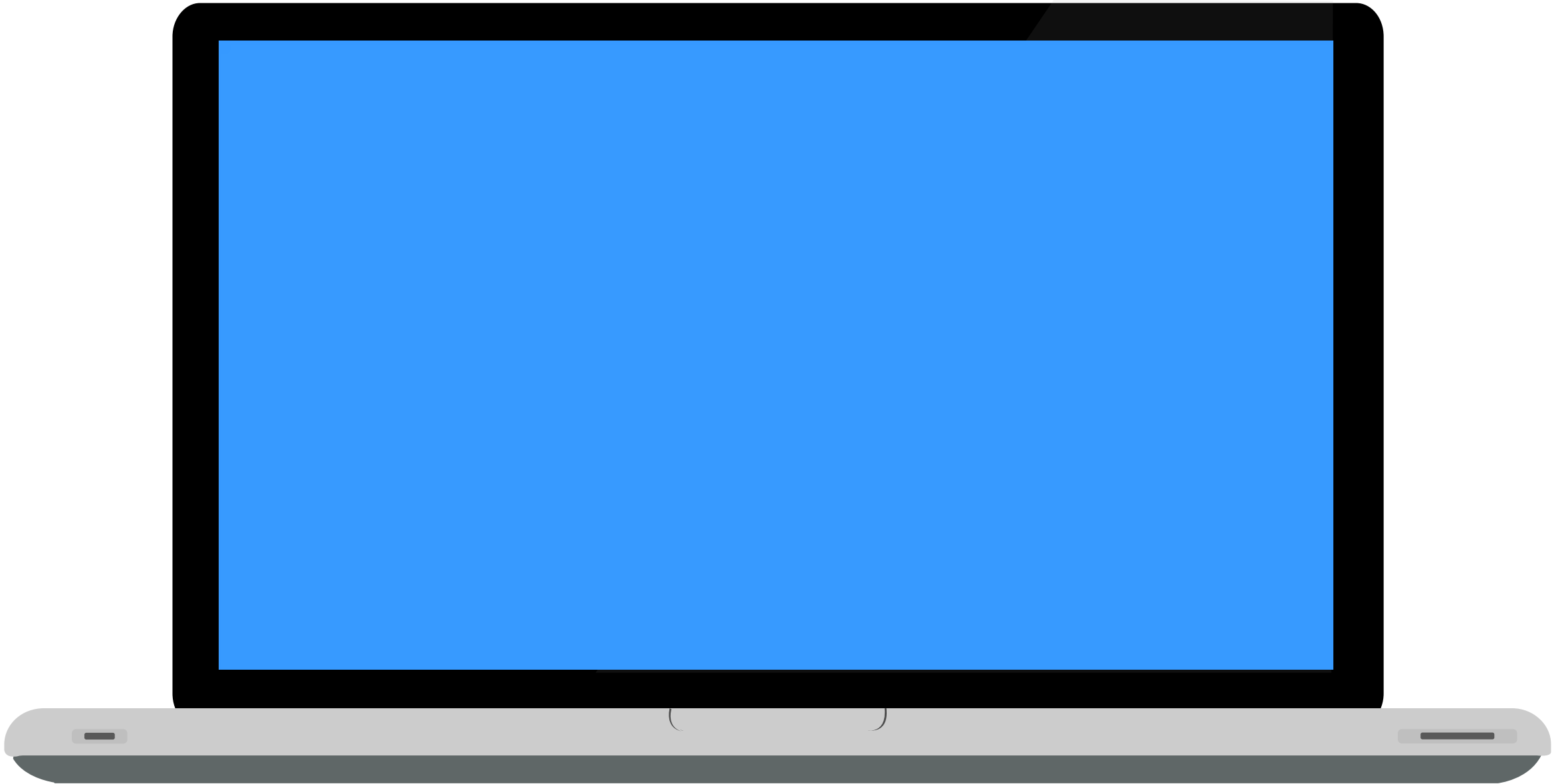


Ms. Burden (6th and 7th)



Ms. S. Eiland (7th and 8th)

Welcome Messages from the Teachers



Recipe for Success

Communication and Connections Are Key



Relationships

We must establish and cultivate positive relationships between school and home. Though physically isolated, stay connected!