



New Milford Public Schools  
50 East Street  
New Milford, CT 06776  
860-355-8406



**New Milford High School**  
Mr. Greg Shugrue, Principal

Mrs. Elizabeth Curtis,  
Ass't. Principal

Mrs. Susan Greene,  
Ass't. Principal

Mrs. Donna Luzi,  
Ass't. Principal



**Schaghticoke Middle School**

Mrs. Dana Ford, Principal

Mr. Gerald Robinson,  
Ass't. Principal



**Sarah Noble School**  
Dr. Len Tomasello, Principal

Mrs. Kristine Golden,  
Ass't. Principal

Dr. Don Naiman,  
Ass't. Principal

Mrs. Anne Bilko  
Admin. Intern



**Hill & Plain Elementary**  
Dr. Sandra Nadeau, Principal

Mrs. Anne Bilko,  
Assistant Principal



**John Pettibone Elementary**  
Mrs. Paula Kelleher, Principal

Mrs. Joan Kick, Ass't. Principal



**Northville Elementary**  
Mrs. Susan Murray, Principal

Mrs. Joan Kick, Ass't. Principal

# Spotlight on New Milford Schools

Volume 2, Issue 6

April 2012

## Spring Cleaning



It's hard to believe there are only thirty-something days of school left. Where has the year gone? Even though it seems like the school year is winding down, it's actually a very busy time. This newsletter highlights the many talents of NMPS students, provides you with a plethora of calendar dates, and an update of what is happening at each school.

We love to hear your thoughts on the newsletter, how we can improve it and feature your ideas for articles and photos. You can send your ideas to: [schoolnews@newmilfordps.org](mailto:schoolnews@newmilfordps.org)

Just as you may have begun your "spring cleaning" there are a few "housekeeping loose-ends" we'd like to take the opportunity to go over.

First, a correction from our last issue. Melissa Khalatbari was incorrectly identified as the K-12 Health Coach. Her official title is K-12 Health *Educator*. Melissa's position was added

to meet the state requirements for the delivery of health instruction in grades K-6. Also, not mentioned in the article was Cheryl Morosko. She serves as the Literacy Coach for grades 7-12. Cheryl works with Schaghticoke and New Milford High School students and staff. As with the other coaches, her position was originally created and funded through the Education Jobs Grant.

Finally, a question that has come up recently—What is the District's position on "pink slime?" According to Sandra Sullivan, Director of Food Services, "New Milford Public Schools Food Service does not use meat with pink slime, nor do they have any plans to do so in the future."

For more information on the Food Services and Nutrition Department, see page 4.

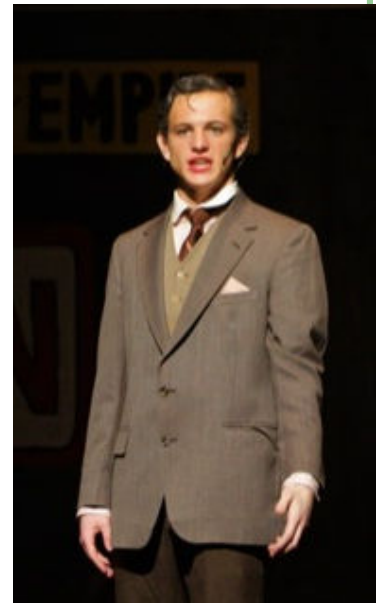
### Contents:

Spring Cleaning	1
NMPS Talent	2-3
School Lunch	4
Calendars	5
Athletics	6
School Updates	7

# N M P S H A S



**42ND  
STREET**



The New Milford High School Musical cast and crew had a wonderful run of 42nd Street! The students acted, sang and danced; the sets were wonderful and the costumes top-notch. It's hard to believe they're high school students when you're watching it. Kudos to the students for a fine production and for their many, many hours of hard work. They should all be proud! And, if you've never been to one of NMHS' musicals mark your calendar for next year!



Photos courtesy of Sarah Weaver





Several Sarah Noble Intermediate School students participated in the original production **Tell Me Why, Tell Me How**. The students, under the direction of SNIS reading specialist Susan Hackel, put on an amazing performance last week.



Students worked with several SNIS staff members and “partner classes” to not only write the play, but also create original lyrics and melodies, animate digital scenery and research animals.

The play was based on “pour quoi” stories made famous by Rudyard Kipling.



# T A L E N T

# S C H O O L L U N C H

## Healthy Initiatives in the Cafeteria



According to USDA Dietary Guidelines increased intakes of fruits, vegetables, whole grains and fat free or low fat milk and milk products are likely to have important health benefits. These foods are encouraged for a healthy diet and are sources of nutrients that many people are not getting enough of such as calcium, potassium, fiber, magnesium and vitamins A, C and E.

New Milford's Food and Nutrition Services Department uses the dietary guidelines as the foundation of our menu planning. Here are some examples of what the breakfast and lunch program provides:

- Only skim or 1% milk
- Low fat and part skim cheeses
- Whole grain bread, rolls, tortillas, cereals, pizza crust and brown rice
- Fresh vegetables such as butternut squash, zucchini, yellow squash, baby spinach, carrots, cauliflower, broccoli, peppers, cucumbers and green beans
- Fresh fruits such as apples, strawberries, pears, oranges, tangerines, golden pineapple, cantaloupe, grapes and honeydew melon

Remember, whether your child enjoys a school provided breakfast/lunch or packs a lunch, the goal is a nutrient rich meal to fuel their brains and bodies for the day.

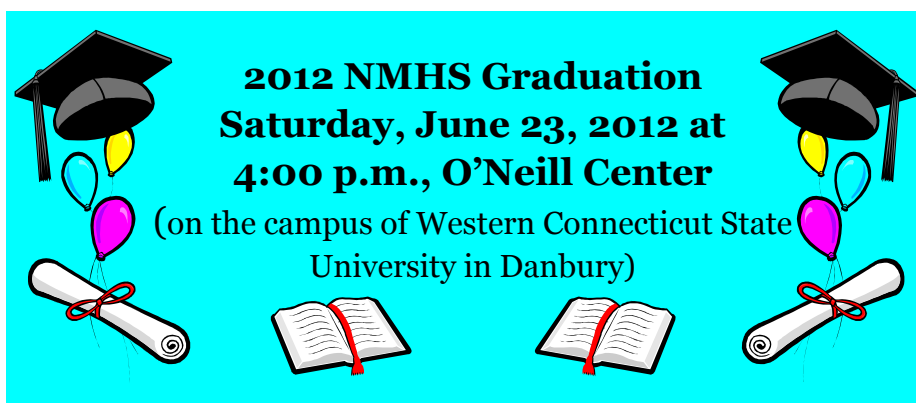
Don't forget, school lunch menus are available on the District website under Food and Nutrition Services or by clicking [here](#).

## New Milford Schools Calendar

# C A L E N D A R

### May

- May 2—**SMS/NMHS**—Early Dismissal—12:00 p.m.—Professional Development
- May 3—**NES PTO**—9:00 a.m.
- May 5—**NMHS** Junior Prom
- May 7—**SNIS** 5th grade beginner band and chorus concert—7:00 p.m.
- May 8—**BOE**—Board of Education Meeting—SNIS Media Room—7:30 p.m.
- May 9—**Elementary/SNIS**—Early Dismissal—1:00 p.m.—Professional Development
- May 10 - **SMS** Open House for 6th graders 5:30 - 7:00 p.m.  
                   **SMS** Voices and Jazz Concert—7:00 p.m.
- May 14—**NMHS** Freshman/Sophomore Awards  
                   **SMS** PTO Coffee with the Principal—9:00 a.m.  
                   **SNIS** Intermediate & Advanced band and 6th grade chorus concert—7:00 p.m.
- May 15—**Budget Referendum Vote**  
                   **BOE** Policy Committee Meeting—Lillis Bldg, Room 2—6:30 p.m.  
                   **BOE** Committee on Learning—Lillis Bldg., Room 2—7:30 p.m.
- May 16—**SMS/NMHS**—Early Dismissal—12:00 p.m.—Professional Development  
                   **SNIS** 4th Grade beginner band and chorus concert—7:00 p.m.
- May 18—**JPS** Volunteer Appreciation Breakfast
- May 19—**NMHS** Senior Prom
- May 21—**SMS** Awards and Recognition Night—7:00 p.m.  
                   **SNIS** Orchestra and Jazz Band Concert
- May 23—**NMHS** Junior/Senior Awards
- May 24—**H&P** Art Show and Science Fair—5:30 p.m.
- May 25—**JPS** Poetry in Motion 9:30 a.m.-2:45 p.m.  
                   **JPS** BMX Bike Show—6:00 p.m.
- May 28—**Memorial Day—NO SCHOOL**
- May 30—**NMHS** Scholarship Night
- May 31—**NMHS** Senior Banquet  
                   **SMS** Chorus and Orchestra Concert—7:00 p.m.



## Upcoming Home Athletic Events

Date	Sport	Opponent	Time	Date	Sport	Opponent	Time
Tue., 5/1	JV Baseball	Weston	4:15 p.m.	Wed., 5/9	V Baseball	Bunnell	4:15 p.m.
Tue., 5/1	V Boys Golf	Stratford	3:00 p.m.	Wed., 5/9	FR Baseball	New Fairfield	3:45 p.m.
Tue., 5/1	V Boys Lacrosse	Newtown	7:30 p.m.	Wed., 5/9	V Boys Lacrosse	Notre Dame-	6:00 p.m.
Tue., 5/1	JV Boys Lacrosse	Newtown	5:00 p.m.	Wed., 5/9	JV Boys La-	Notre Dame-	4:00 p.m.
Tue., 5/1	V Boys Track	Oxford, Immaculate	4:00 p.m.	Wed., 5/9	V Softball	Bunnell	4:15 p.m.
Tue., 5/1	JV Softball	Weston	4:15 p.m.	Wed., 5/9	V Girls Tennis	Stratford	3:45 p.m.
Wed., 5/2	<b>V Baseball</b>	New Fairfield	4:00 p.m.	Thu., 5/10	V Boys Golf	Joel Barlow	3:00 p.m.
Wed., 5/2	FR Baseball	Bethel	3:45 p.m.	Fri., 5/11	JV Baseball	Masuk	3:45 p.m.
Wed., 5/2	V Boys Golf	Masuk	3:00 p.m.	Fri., 5/11	FR Boys La-	Brookfield	4:00 p.m.
Wed., 5/2	V Softball	New Fairfield	4:15 p.m.	Sat., 5/12	JV Softball	Masuk	Cancelled
Wed., 5/2	FR Softball	Newtown	3:45 p.m.	Mon., 5/14	FR Baseball	Weston	4:15 p.m.
Wed., 5/2	V Girls Tennis	Pomperaug	3:45 p.m.	Mon., 5/14	V Boys Lacrosse	Pomperaug	6:00 p.m.
Thu., 5/3	V Boys Lacrosse	Weston	6:00 p.m.	Mon., 5/14	JV Boys La-	Pomperaug	4:00 p.m.
Thu., 5/3	JV Boys Lacrosse	Weston	4:00 p.m.	Mon., 5/14	V Girls Lacrosse	Ridgefield	6:00 p.m.
Thu., 5/3	FR Softball	Woodland	3:45 p.m.	Mon., 5/14	JV Girls Lacrosse	Ridgefield	4:15 p.m.
Fri., 5/4	JV Baseball	Joel Barlow	3:45 p.m.	Mon., 5/14	FR Softball	Holy Cross	3:30 p.m.
Fri., 5/4	FR Baseball	Brookfield	3:45 p.m.	Mon., 5/14	V Girls Tennis	New Fairfield	3:45 p.m.
Fri., 5/4	JV Softball	Joel Barlow	4:00 p.m.	Tue., 5/15	V Boys Golf	Notre Dame-	3:00 p.m.
Sat., 5/5	FR Boys Lacrosse	New Fairfield	10:00 a.m.	Tue., 5/15	V Boys Outdoor	Bethel,	4:00 p.m.
Mon., 5/7	JV Baseball	Kolbe Cathedral	3:45 p.m.	Tue., 5/15	V Girls Lacrosse	Stratford	4:00 p.m.
Mon., 5/7	V Boys Lacrosse	Glastonbury	5:00 p.m.	Tue., 5/15	JV Softball	Lauralton Hall	4:00 p.m.
Mon., 5/7	JV Boys Lacrosse	Glastonbury	5:00 p.m.	Wed., 5/16	V Baseball	Newtown	3:45 p.m.
Mon., 5/7	V Boys Tennis	Bunnell	3:45 p.m.	Wed., 5/16	V Boys Tennis	Masuk	3:45 p.m.
Tue., 5/8	JV Boys Basketball	Notre Dame-Fairfield	4:00 p.m.	Wed., 5/16	V Softball	Newtown	4:15 p.m.
Tue., 5/8	V Boys Golf	Shepaug Valley	3:15 p.m.	Wed., 5/16	FR Softball	Woodland	3:30 p.m.
Tue., 5/8	V Girls Lacrosse	Masuk	5:15 p.m.	Wed., 5/16	V Girls Tennis	Bethel	3:45 p.m.
Tue., 5/8	JV Girls Lacrosse	Masuk	3:30 p.m.	Thu., 5/17	V Boys Golf	Bethel	3:00 p.m.
Tue., 5/8	JV Softball	Pomperaug	3:45 p.m.	Fri., 5/18	JV Baseball	Bunnell	4:15 p.m.
				Fri., 5/18	V Boys Tennis	Shepaug Valley	3:45 p.m.
				Fri., 5/18	JV Softball	Bunnell	4:15 p.m.
				Mon., 5/21	V Baseball	Wamogo	3:45 p.m.
				Mon., 5/21	JV Softball	Masuk	3:45 p.m.

A  
T  
H  
L  
E  
T  
I  
C  
S



**New Milford Public Schools**  
50 East Street  
New Milford, CT 06776  
860-355-8406

Dr. JeanAnn C. Paddyfote  
Superintendent

Dr. Maureen E. McLaughlin  
Assistant Superintendent

Ms. Ellamae Baldelli  
Director, Human Resources

Mr. John Calhoun  
Facilities Manager

Mr. Dan DiVito  
Director, Technology

Mrs. Adele Johnson  
Director, Pupil Personnel and  
Special Services

Mr. Gregg Miller  
Director, Fiscal Services

Mrs. Sandra Sullivan  
Director, Food Services

## Board of Education

Wendy Faulenbach, Chairperson  
Daniel Nichols, Vice Chairperson  
Daniele Shook, Secretary  
Lynette Celli Rigdon, Assistant Secretary  
Tom Brant  
David Lawson  
Thomas McSherry  
David Shaffer  
William Wellman

## Around the District

Here are some various events and activities happening in the local schools:

- Both John Pettibone Elementary and Schaghticoke Middle School recently held Wellness Fairs for their students.
- Schaghticoke Middle School hosted a Rachel's Challenge presentation and began a Rachel's Challenge club. (<http://www.rachelschallenge.org/>)
- Northville Elementary School students planted seeds with Diana Swanson from the Pratt Center. The seedlings will be planted in the community garden located at Northville Elementary later this spring.
- Hill and Plain Elementary sponsored its annual Read-a-Thon recently. The Read-a-Thon helps sponsor visiting authors in April and May—Ryan San Angelo, Helen Lester and David Adler.
- John Pettibone Elementary, Northville Elementary and Sarah Noble Intermediate School also hosted visiting authors in conjunction with their literature curriculum. The author visits consisted of:
  - John Pettibone—Jerry Pallotta, Ryan SanAngelo, and Illustrator Bill Thomson
  - Northville—Rafe Martin, Suzy Kline, and Wendell Minor
  - Sarah Noble—Lisa Capone, Joseph Bruchac, and Shakesperience Productions
- NMHS student, Annie M., was the Regional Grand Prize Winner of the 2012 Earth Day Recycling Poster Contest. Her design, along with several other New Milford grade level winners and honorable mentions, can be viewed [here](#) beginning on page 35.

The mission of the New Milford Public Schools, a collaborative partnership of students, educators, family and community, is to prepare each and every student to compete and excel in an ever-changing world, embrace challenges with vigor, respect and appreciate the worth of every human being, and contribute to society by providing effective instruction and dynamic curriculum, offering a wide range of valuable experiences, and inspiring students to pursue their dreams and aspirations.