

# Annual Title I Meeting

May Elementary:

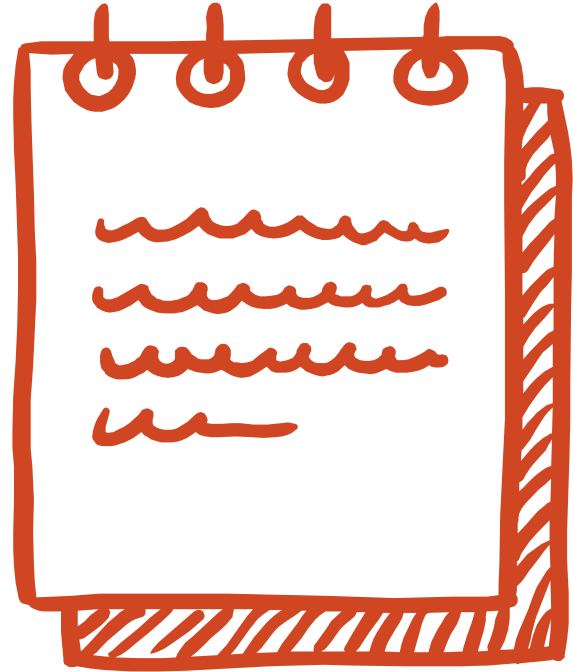
**Zoom:** Nov 4, 2020 @ 10am

**Face to Face:** Nov 19, 2020  
@ 6:30 pm in library



# Agenda

- Welcome and introductions
- What is Title I?
- How is Title I benefitting my child?
- School-Parent Compact
- Parent Policy
- District & Campus Plans
  - Curriculum
  - Assessment
- Parents Rights
- How can I be involved?



# What is Title I?

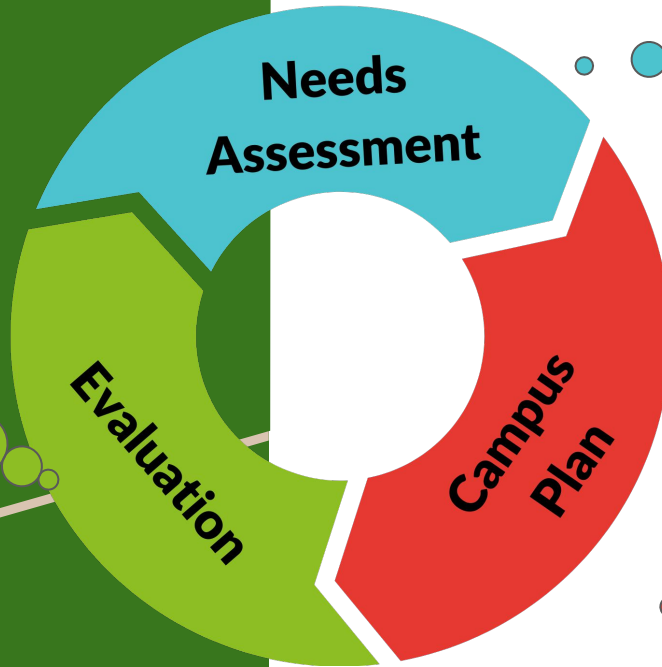


Federal funding to “improve basic programs”

*To provide **all children**  
a significant  
opportunity to receive a  
**fair, equitable, and**  
**high-quality education,**  
and to **close**  
**educational**  
**achievement gaps.***

# Campus Improvement Plan

Were we successful? Do we need to change direction?



**Needs Assessment**

What's the need?  
Where's our focus?

**Campus Plan**

What Activities will meet our needs?

**Evaluation**

# What is our Title I Program?



**Schoolwide Program** = All children may participate

Campus Allocation: \$ 72,441

67% eligibility: # of students on free/reduced lunch

Our primary Title I program is built around our RTI program. All elementary students in grades K-6th receive additional support in RTI via small groups and one-on-one to close their individual learning gaps. Those grade levels have an RTI period scheduled in their day!

## Campus Title I Program:

- 2 Interventionists (% of RTI), 1 paraprofessional
- Professional Development
- Instructional supplies: iStation (Online reading program)
- Parent involvement activities (Girls' Tea/Building Boys)

# Curriculum



May ISD uses TEKS Resource System to ensure our teachers planning is vertically aligned with other grade levels and meets all TEKS requirements.

## Primary Resources:

- English/Reading: MyPerspective (Pearson)
- Math: goMath! (Houghton Mifflin)
- Science: Nancy Larson (K-3)  
McGraw-Hill (6-8)
- Social Studies: Studies Weekly

# Assessment



## Local Assessments:

- Eduphoria (Creating Tests and Data Gathering)
  - Unit Tests & Benchmarks
- TEKS Resource System (Creating Tests)

## State Assessments:

- STAAR (Grades 3-6)
- TELPAS (English Language Learners)

# State Assessment

<http://texasassessment.com/families/>

The screenshot shows the Texas Assessment website's 'FOR FAMILIES' section. At the top, the 'TEXAS ASSESSMENT' logo is on the left, and navigation links for 'FOR FAMILIES', 'FOR ADMINISTRATORS & EDUCATORS', and 'EN ESPAÑOL' are on the right. Below this is a horizontal menu with icons and labels: 'UNDERSTANDING YOUR CHILD'S SCORE' (question mark icon), 'ALL ABOUT THE STAAR TEST' (A+ icon), 'HOW TO HELP MY CHILD PREPARE' (pencil icon), 'LITERACY AND LEXILE MEASURES' (book icon), 'QUANTILE MEASURES' (plus-minus icon), and 'FAQs' (question mark icon). The main content area features a large heading 'LEARN MORE ABOUT YOUR CHILD'S SCORE' over a blurred background of students. On the left, a cartoon boy with dark hair and a smile holds two books; the top one is green with 'THE NAMESAKE' and 'LAYER 1200L' written on it. On the right, a purple login box contains the text 'Log in to the secure student portal to learn more about your child's score and how to help improve it.' Below this text are input fields for 'Unique Student Access Code' and 'Student's Date of Birth' (with dropdowns for Month, Day, and Year). An orange button with a lock icon says 'LOG IN TO STUDENT PORTAL'. At the bottom of the purple box is a white button with a right arrow and the text 'Find My Access Code'.

TEXAS ASSESSMENT

FOR FAMILIES | FOR ADMINISTRATORS & EDUCATORS | EN ESPAÑOL

UNDERSTANDING YOUR CHILD'S SCORE | ALL ABOUT THE STAAR TEST | HOW TO HELP MY CHILD PREPARE | LITERACY AND LEXILE MEASURES | QUANTILE MEASURES | FAQs

## LEARN MORE ABOUT YOUR CHILD'S SCORE

Log in to the secure student portal to learn more about your child's score and how to help improve it.

Unique Student Access Code

Student's Date of Birth

LOG IN TO STUDENT PORTAL

→ Find My Access Code



# Parent Policy



## Our district has:

1 - District Parent Policy

1 - Elem. Parent Policy for each Title I campus

Elementary is the only Title I campus in our district.

## Policy describes how campus will:

- Convene annual meeting
- Provide flexible number of meetings
- Involve parents meaningfully in planning, review, & evaluation of parent policy and program
- Provide timely info about parent activities
- Provide info about curriculum & assessment
- Offer opportunities upon request to discuss child's progress

Parents may access parent policy online, or request a hard copy by contacting our Federal

Program Director:

Natalie Steele @ 254-259-2131.

# School-Parent Compact



Written agreement outlining the partnership between school and home:

- How responsibility for student academic achievement is shared between families, school and students
- Addresses high-quality curriculum and instruction
- Ways parents will support child's learning
- Importance of two-way communication
- Shared decision-making related to child's education

Our School-Parent Compact is included in our registration packet every year. You can also request a hard copy by contacting our Federal

Program Director:

Natalie Steele @ 254-259-2131.

# Parents Rights: Teacher & Para Qualifications



## Teacher & Paraprofessional Qualifications:

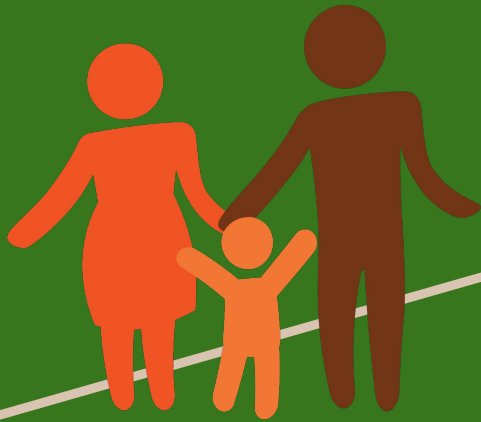
- Teacher's qualifications (state licensing) for grade & subject area assigned
- Teacher's qualifications - emergency or provisional status?
- Paraprofessional - credentials, if applicable

## Teachers Not Appropriately Certified:

- If taught 4+ weeks by teacher without appropriate credentials

To request more information,  
contact  
Natalie Steele @ 254-259-2131

# How can YOU get involved?



- Join our parent organizations {PTO}
  - Contact PTO at [mayptoinc@gmail.com](mailto:mayptoinc@gmail.com)
- “Like” us on Facebook {May ISD}
- Be part of the Title I planning team
  - Contact Mrs. Williams at 254-259-3711
- Help develop the Parent Policy and School-Parent Compact
  - Contact Mrs. Williams at 254-259-3711
- Share your thoughts via surveys
- Volunteer
- Attend band concerts
- Attend athletic events

# Resources Discussed in this presentation:

Please click on the live links to access the following documents:

[CIP \(Campus Improvement Plan\) with CNA \(Campus Needs Assessment\)](#)

[Parent Family Engagement Policy](#)

[Parent-School Compact](#)

# School Improvement Grant



**Targeted Improvement Plan:** Campus identifies short-term, intermediate, and long term goals towards increased student achievement and not having an IR (Improvement Required) rating.

- Leadership Training by ESC
- Objective Driven Lesson Plans (teacher training every 6-weeks lesson planning sessions, Fundamental 5)
- Data Driven Instruction (planning, reteaching, data sheets)
- RTI Interventionists (1 and ½ paid with SIG money)

\*\*If we remain in IR, we will begin implementing the Campus Turnaround Plan below.

\*\* Due to Covid, May Elementary will continue to use our Targeted Improvement Plan instead of implementing the Campus Turnaround Plan.

**Campus Turnaround Plan:** The District's commitment to support the Campus Turnaround Plan based on a 3 year plan.

- Daily RTI program for grades K-6th to receive additional academic support to close their individual learning gaps.
- Focus: School Improvement-foundational practices
- Daily lesson plans (clear objectives, differentiation,
- Formative Assessments (unit tests, benchmarks)
- Data Meetings (data sheets, goal setting)
- Roles of Instructional Leaders (Principal, Teacher Facilitator, Supt)

# Contact Us



- Elem Principal: Allison Williams; 254-259-3711;  
[allison.williams@mayisd.com](mailto:allison.williams@mayisd.com)
- Counselor: Kay Ribble; 254-259-2131;  
[kay.ribble@mayisd.com](mailto:kay.ribble@mayisd.com)
- Federal Program Director & Teacher Facilitator:  
Natalie Steele; 254-259-2131;  
[natalie.steele@mayisd.com](mailto:natalie.steele@mayisd.com)
- HS Principal: Nick Heupel; 254-259-2131;  
[nick.heupel@mayisd.com](mailto:nick.heupel@mayisd.com)