



WIDDLE SCHOOL NEWS

BAMBERG-EHRHARDT MIDDLE SCHOOL • 897 North Street • Bamberg, SC 29003 • 803-245-3058

BEMS Web Address: <https://bems.bamberg1.net/>

Tuesday, July 21, 2020

Dear Bamberg-Ehrhardt Middle School Families:

On behalf of the faculty and staff of Bamberg-Ehrhardt Middle School (BEMS), welcome to the 2020 - 2021 school year. This school year will be different from any school year we have ever experienced before due to the challenges presented by the COVID-19; however, Bamberg School District One (BSD1) and the staff of BEMS have spent months planning to reopen school as SAFELY as possible this fall. **All BSD1 schools will offer two options for instruction this school year: Option 1 - Traditional Face-to-Face Instruction or Option 2 - Virtual Learning from Home.** You will receive more information regarding these two options later in this document and in the BEMS School Reopening Guide located on our school website. **The district intends to offer a face-to-face option to students not enrolled in virtual learning to begin on September 8th; however, this is contingent upon COVID conditions at that time.** Parents and students will be notified of decisions about returning face-to-face prior to that date. Virtual students will continue online from home regardless of the face-to-face date for the remainder of the semester. *All schools will be following guidelines from the South Carolina Department of Health and Environmental Control (DHEC) and the South Carolina Department of Education to ensure safety and health protocols are implemented to the fullest extent possible.* Our website and social media will be updated frequently to ensure that you receive the most current information available. **Please contact the school if you need Wi-Fi access. We will be issuing devices.**

Special funding has been designated by our South Carolina General Assembly through the CARES Act to add 5 additional school days to our academic calendar. These days are known as LEAP (Learn, Evaluate, Analyze, Prepare). Also, our General Assembly pass legislation requiring districts to pre-access all students in grades Kindergarten through nine within the first ten days of school. **All BEMS students (traditional & virtual) will have to physically attend 2 LEAP days of school to be pre-assessed in reading and math through MAP testing.** Only one grade level will attend school per day. Group sizes will be less than 10. Students will remain with one teacher in their cohort the entire time. We will be following all safety and health protocols mention above. Please see the LEAP schedule located later in this document to determine when your student should attend.

We have missed the smiling faces of our students! We hope that all of our students are healthy and ready to start school soon. **Please carefully read this newsletter.** It is packed with important information that you will need to make decisions for your student. If you have any questions or concerns about the reopening of school or anything else pertaining to the schooling of your student, please contact me. It is my great privilege to serve this community.

Sincerely,

Denise L. Miller

Denise L. Miller,
Principal

BEMS LEAP SCHEDULE

All Students (Traditional Face-to-Face & Virtual Must Attend)

Mon, Aug. 17	Tues, Aug. 18	Wed, Aug. 19	Thurs, Aug. 20
MAP Testing	MAP Testing	MAP Testing	MAP Testing
Reading	Math	Reading	Math

Chromebooks will be issued to students on their assigned LEAP days.

IMPORTANT BACK-TO-SCHOOL DATES

- ⇒ **Tuesday, August 11th** - 7th Grade Orientation @ 5:00pm (via YouTube on website & Facebook)
- ⇒ **August 17th - 20th**- BEMS LEAP Days (please see schedule above)
- ⇒ **Monday, August 24th** - 1st Day of School—All students will begin virtually for the 1st 2 weeks of school
- ⇒ **Tuesday, September 8th** - Traditional Face-to-Face Instruction begins for those students who have selected this option.



Student Scheduling Options

Option 1: Traditional Face-to-Face Instruction

- Must attend assigned LEAP days
- First 2 weeks of school will be virtual learning from home
- BEMS will issue a student Chromebook
- Face-to-Face instruction begins September 8th
- Will follow traditional BEMS bell schedule
- DHEC safety & health protocols implemented

Option 2: Virtual Learning From Home

- Must attend assigned LEAP days
- Must preregister BEFORE school begins
- BEMS will issue a student Chromebook
- Must adhere to the policies of the teacher of record
- Please see the BEMS Virtual Learning Plan

*Parents and students must select and commit to either option 1 or option 2 for 1 grading period. Parents and students will have the opportunity to reconsider their scheduling at the end of each grading period.

BAMBERG-EHRHARDT MIDDLE SCHOOL VIRTUAL LEARNING PLAN

GOOGLE CLASSROOM

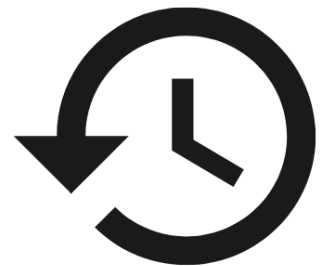
Students enrolled in virtual learning at BEMS will access their assignments through the Google Classroom Online platform.



Google Classroom

ASYNCHRONOUS SCHEDULE

Virtual instruction will be uploaded to the Google Classroom daily by 10:00 am. Attendance will be taken daily.



TEACHER OFFICE HOURS

Each teacher will set Office Hours to assist students by email, chat, and phone.



STUDENT RESPONSIBILITY

Virtual students will be responsible for completing classwork & assessments by the assigned due date.



GRADES

Virtual assignments & assessments will be graded according to the class syllabus. Grades will be assigned according to the SC Uniform Grading Policy.



SOCIAL & EMOTIONAL LEARNING

All virtual students must check-in online with the guidance counselor or other designated staff weekly to discuss social & emotional well-being.



IMPORTANT INFORMATION

BEMS REOPENING PLANS

[HTTPS://BEMS.BAMBERG
1.NET/COVID19](https://bems.bamberg1.net/covid19)



MEALS FOR VIRTUAL STUDENTS

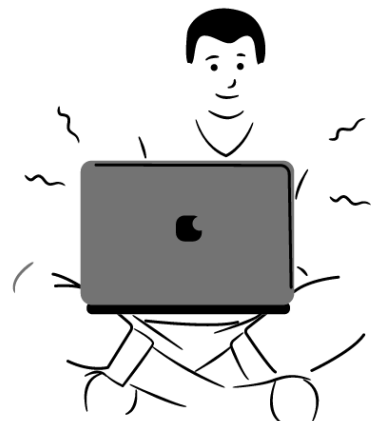
Breakfast & lunch will
be delivered daily via
school bus for virtual
students.



FINDUS@

Website:
bems.bamberg1.net

Facebook:
[@BEMSRedRaiders](https://www.facebook.com/BEMSRedRaiders)



Please Register for the virtual learning at www.bamberg1.net.