



BARTON
ACADEMY

ADVANCED WORLD STUDIES

Back-to-School Bulletin

Take-In and Dismissal Procedures

Summer Enrichment Activities

School Supply Information

Uniform Information



@BartonAcademy



@BartonAcademyExplorers



@barton_academyaws

Barton Academy for Advanced World Studies

Take-In and Dismissal Procedures

Barton's beautiful Downtown location within the heart of the City of Mobile will create many wonderful opportunities for our students including business and community connections and walking field trips. Our location also requires deep consideration of traffic flow and parking to maintain positive community relationships.

Carpool Procedures:

Routes were reviewed by Barton administration, City of Mobile traffic engineers, and the City of Mobile Downtown Police Precinct to determine the most efficient route for Barton carpool that would cause the least disruption to routine traffic. **Barton's take-in and dismissal routines for carpool and before and after school care will utilize St. Louis and Cedar streets ONLY.** The carpool route will be monitored and enforced. Follow the directions below to avoid concerns and to assist us in maintaining a positive relationship with our Downtown community. ***Please do not begin lining up for carpool until at least 7:15 a.m. and 2:15 p.m. to avoid unnecessary traffic back-up.***

Directions from I-165 to Water Street: Turn RIGHT from Water Street onto St. Louis. Travel St. Lewis Street to Cedar. Turn LEFT onto CEDAR. The Barton carpool line will BEGIN at the CEDAR and CONTI Stop sign. PARK your car along the LEFT SIDE of the street in a single line being extremely careful to AVOID BLOCKING businesses, parking lots, and housing entrances. Also, AVOID BLOCKING INTERSECTIONS at St. Michael, St. Francis, and Dauphin Street.

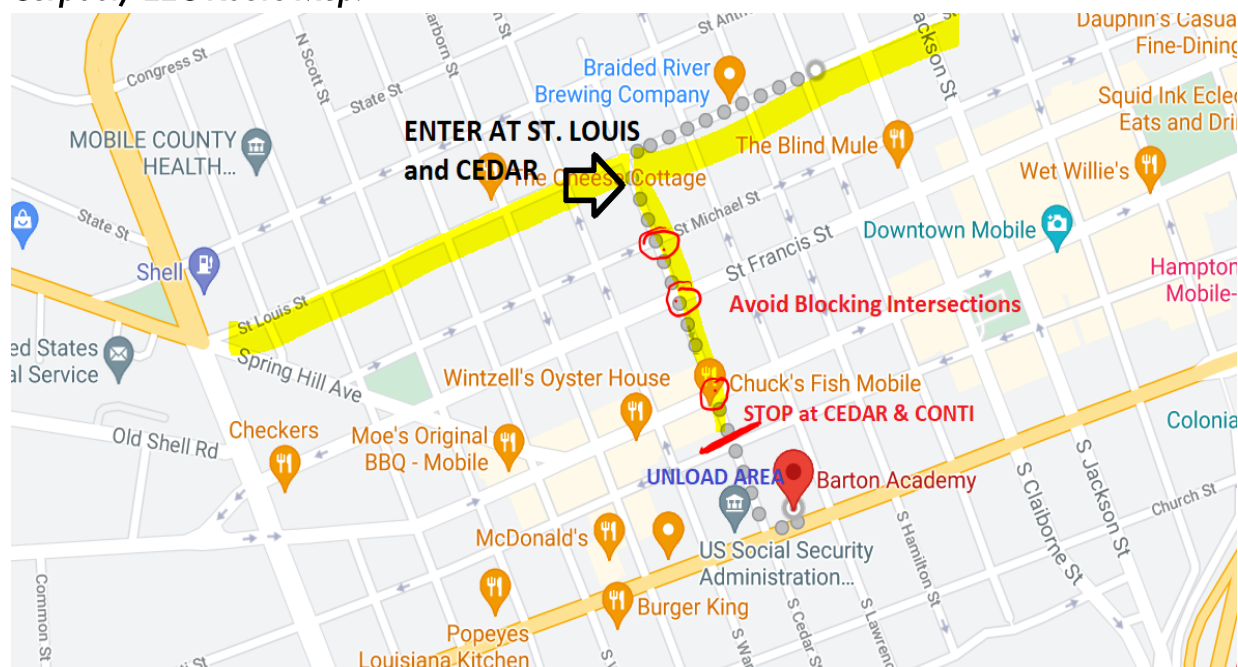
Directions from Spring Hill Avenue: At Spring Hill and Broad, merge left onto St. Louis Street. Travel along St. Louis until you reach Cedar. Turn RIGHT onto CEDAR. The Barton carpool line will BEGIN at the CEDAR and CONTI stop sign. PARK your car along the LEFT SIDE of the street in a single line being extremely careful to AVOID BLOCKING businesses, parking lots, and housing entrances. Also, AVOID BLOCKING INTERSECTIONS at St. Michael, St. Francis, and Dauphin Street.

****At approximately 7:25 and 2:35, Barton faculty and/or traffic guards will move the carpool lanes forward along Cedar beside Barton. Once traffic is pulled into the carpool "unload" /load area, you will be notified by faculty to unload vehicles. Students will unload and load their cars ONLY in the unload area (along the Barton gate on Cedar) and enter the Cedar side gate. DO NOT UNLOAD VEHICLES BEYOND CONTI. Afternoon dismissal students will receive carpool tags that should remain in your vehicle for pick-up.**

Reminders: St. Louis at Cedar is the **ENTRANCE** to the Barton carpool line. DO NOT attempt entering the carpool line at another through street (i.e. St. Michael, St. Francis, or Dauphin). Doing so may result in ticketing due to obstructing traffic flow. We cannot cause traffic back-ups on through streets, and "line cutting" will not be permitted or tolerated.

**Morning Explorer Extended Care students must be dropped by no later than 7:15 a.m. to avoid interfering with bus and carpool. Afternoon EEC should not be picked up earlier than 3:15 to avoid interfering with bus and carpool.*

Carpool/ EEC Route Map:



Bus Procedures:

Bus students will be picked-up from their ZONED middle school according to the magnet bus routes posted on [mcpss.com](https://www.mcpss.com). These will be updated by the MCPSS Transportation Division over the summer. To locate magnet bus routes, visit <https://www.mcpss.com/busroutes>

Your child will be transported from his or her zoned school to the magnet bus hub located at Clark-Shaw. From there, your child will catch their bus to Barton. Barton buses will unload at approximately 7:15 a.m. on Conti street and enter the Cedar Street gate.

Explorer Extended Care Procedures:

Parents will park along the left curb of CEDAR STREET beside the Barton gate and enter the Cedar Street gate to drop and pick-up their students from EEC. Students must be dropped between the hours of 6:30 a.m. – 7:15 a.m. and picked up between 3:15 p.m. – 5:45 p.m.

Walkers:

There will be a special permission form for students designated as "walkers". For safety, we prefer students be monitored by an adult, but the permission form will allow parents to make that final decision with the understanding that Barton faculty and staff are not held liable for students once they leave campus. Walkers must reside within a 1.5-mile radius to be granted permission to walk or bike home or to a parent place of employment.

***ANY student remaining on-campus beyond school hours without permission (late pick-up from carpool, missed bus, late pick-up from after school practice, etc.) will be taken to EEC and charged a \$15.00 daily fee which will be expected at pick-up.**

Barton Academy for Advanced World Studies

Summer Enrichment Activities

Reading Grades 6 – 9:

We encourage students to read for pleasure over the summer!

Required Reading: Barton Explorers are required to choose at least **ONE** award winning (i.e. Newbery, Coretta Scott King, Horn Book Award) middle-grades book to read over the summer. The following website provides examples of book awards and sample titles:

<https://writingmiddlegrade.com/middle-grade-book-awards/>

Teachers will provide an in-school assignment for students to create about their book *once school is back in-session*. They will create and share “book reviews”, summaries, and/or presentations to share their chosen award-winning summer reading book with their classmates.

Optional Reading Enrichment: The Mobile Public Library offers a “Summer Reading Celebration” throughout June and July which encourages reading and even awards prizes! Check out this amazing enrichment opportunity here: <https://src.mobilepubliclibrary.org/>

Math Grades 6 – 9:

Encouraged Math Preparation and Enrichment: The following Khan Academy “Get Ready For...” tools can provide mathematics prep for students. We encourage students to work on the course appropriate for their incoming grade-level or to accelerate if they have mastered grade-level content.

<https://www.khanacademy.org/math/get-ready-for-6th-grade>

<https://www.khanacademy.org/math/get-ready-for-7th-grade>

<https://www.khanacademy.org/math/get-ready-for-8th-grade>

<https://www.khanacademy.org/math/get-ready-for-geometry>

Barton Academy for Advanced World Studies Summer Enrichment Activities (*Continued*)

Language Exploration:

(Optional)- The Duolingo app is a great kid/teen friendly language exploration tool. Rosetta Stone is another quality computer program for those who are looking for more advanced language learning exploration.

Fine Arts, STEM, and History:

(Optional)- The Mobile Symphony is a great resource for Strings lessons.

Students with interest in band instruments are encouraged to visit Andy's Music on Hillcrest Road to explore various mouth pieces and learn about their instrument rental options, etc.

Mobile has many opportunities for exploration and enrichment such as The Mobile History Museum, Gulf Coast Exploreum, Mobile Museum of Art, Flight Works Alabama, and more!

Flight Works (STEM-related) "At-Home" Enrichment Activities:

<https://www.flightworksalabama.com/education/at-home-activities/>

Innovation Exploration:

(Optional)- Disney's "Imagineering in a Box" provides project-based exercises to design a theme park! The entire unit is accessible at the following link:

<https://www.khanacademy.org/humanities/hass-storytelling/imagineering-in-a-box>

*We encourage our students to spend time over the summer visiting with family and friends, exploring hobbies, creating, playing outdoors, volunteering and exploring! We look forward to welcoming our inaugural class of **Barton Explorers** in the fall! Happy Summer!*

"The things we have to learn before we do them, we learn by doing them." -
Aristotle

Explorer Extended Care

Barton Academy for Advanced World Studies will offer a before and after school "Explorer Extended Care" program to provide an alternative for parents who need drop-off and pick-up options more convenient to their work hours.

Our Explorer Extended Care (EEC) will be operated by Barton Academy employees and provide opportunities for tutoring and homework help (if needed) and additional after-school enrichment activities.

Weekly fees must be paid by Friday the week prior. Weekly fees can also be paid monthly or bi-weekly with preapproval.

EEC Registration Fee: \$25.00

EEC Morning Hours: 6:30 a.m. – 7:30 a.m.

Morning Only Rates: \$30.00 Weekly for one child

\$20 Weekly per child for 2+ siblings in same family.

EEC Afternoon Hours: 2:45 p.m. – 5:45 p.m.

*After care may occasionally need to close early to accommodate "high traffic" days such as during Mardi Gras season.

Afternoon Only Rates: \$50.00 Weekly

\$40.00 Weekly per child for 2+ siblings in same family.

EEC Morning and Afternoon Care Combo:

Before and After Care EEC Rates: \$70.00 Weekly

\$60.00 Weekly per child for 2+ siblings in same family.

*Students may not be dropped prior to 6:30 a.m. Students must be picked-up by 5:45 p.m.

A \$10 fee will be charged every five minutes a child is picked up at 5:46 or after.

****EEC registration information and additional details will be provided in late July 2021.***

Barton Academy for Advanced World Studies

School Supply List

6th – 9th Grade

Most convenient method: ORDER supplies and have them **shipped to Barton and labeled with your child's name!** Avoid the hassle by ordering online at <https://olenskybrothers.wixsite.com/backtoschool/barton-academy> or locate the attached mailable order form.

For those wishing to purchase the items yourself the list is below:

- 1 – 2-inch royal blue binder (preferred)
- 1 – 1.5-inch grey binder (preferred)
- 2 – 8-tab dividers
- 4– Journal composition books
- 2 - Packs of wooden pencils (pre-sharpened preferred)
- 1– Pack of highlighters
- 1- small pack of dry erase markers
- 1 - Pack of colored pencils
- 1 – Pack of markers
- 1 – Pack of blue pens
- 1 – Pack of black pens
- 1 – Pack of glue sticks
- 1 – Blunt scissors
- 4 – Prong/pocket folders (2 blue, 2 grey preferred)
- 1- Wide – ruled paper
- 1 – College -ruled paper
- 1 – Pack of graphing paper
- 1 – Box of tissue
- 1- Clorox wipes (**girls**)
- 1 – Paper Towels (**boys**)

**Other specialty items may be requested by individual teachers once school begins.*

BARTON ACADEMY

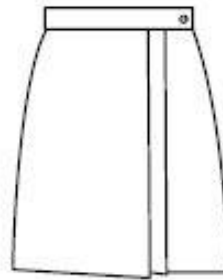
**Zoghby's is our official uniform provider. Uniform shoes may be purchased at any retailer.*

Girls, Grade 6 - 9

Shop In-Store or Online at
Zoghby's
<https://zoghbyuniforms.com/schools/barton-academy/>



Light Blue Oxford with
Barton Academy Logo
on Left Chest



907 Skort,
Plaid 1D



Outerwear must be solid black with no
outside logos or wording.
The Barton Academy logo is optional.



Black V-Neck Cardigan with
Barton Academy Logo
on Left Chest



Black & Grey
Leather or Suede
Saddle Shoes
OR
Black Loafer



**Shoes may be purchased from any retailer.
This is one sample style of the saddle shoe. Any solid
black loafer is also acceptable.*



Grey Flannel Pants

9th Grade Only

Blazers will be provided. Please size your student but do not purchase.



Black Blazer with Barton Academy
Logo on Left Chest



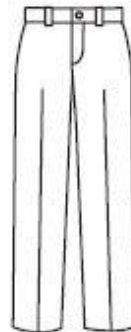
BARTON ACADEMY

Boys, Grade 6 - 9

**Shop In-Store or Online
at Zoghby's**



Light Blue Oxford with
Barton Academy Logo
on Left Chest



Lt. Grey Flannel
Pants

Outerwear must be solid black with no
outside logos or wording.
The Barton Academy logo is optional.



Black V-Neck Pullover with
Barton Academy Logo
on Left Chest



Black Loafer

***Shoes may be purchased from any retailer.**



This is one sample style. Any solid black loafer is acceptable.

9 th Grade Only

Blazers will be provided. Please size your student but do not purchase.



Black Blazer with Barton Academy
Logo on Left Chest



If you need uniform assistance, please email Dr. Jones at acjones@mcpss.com.