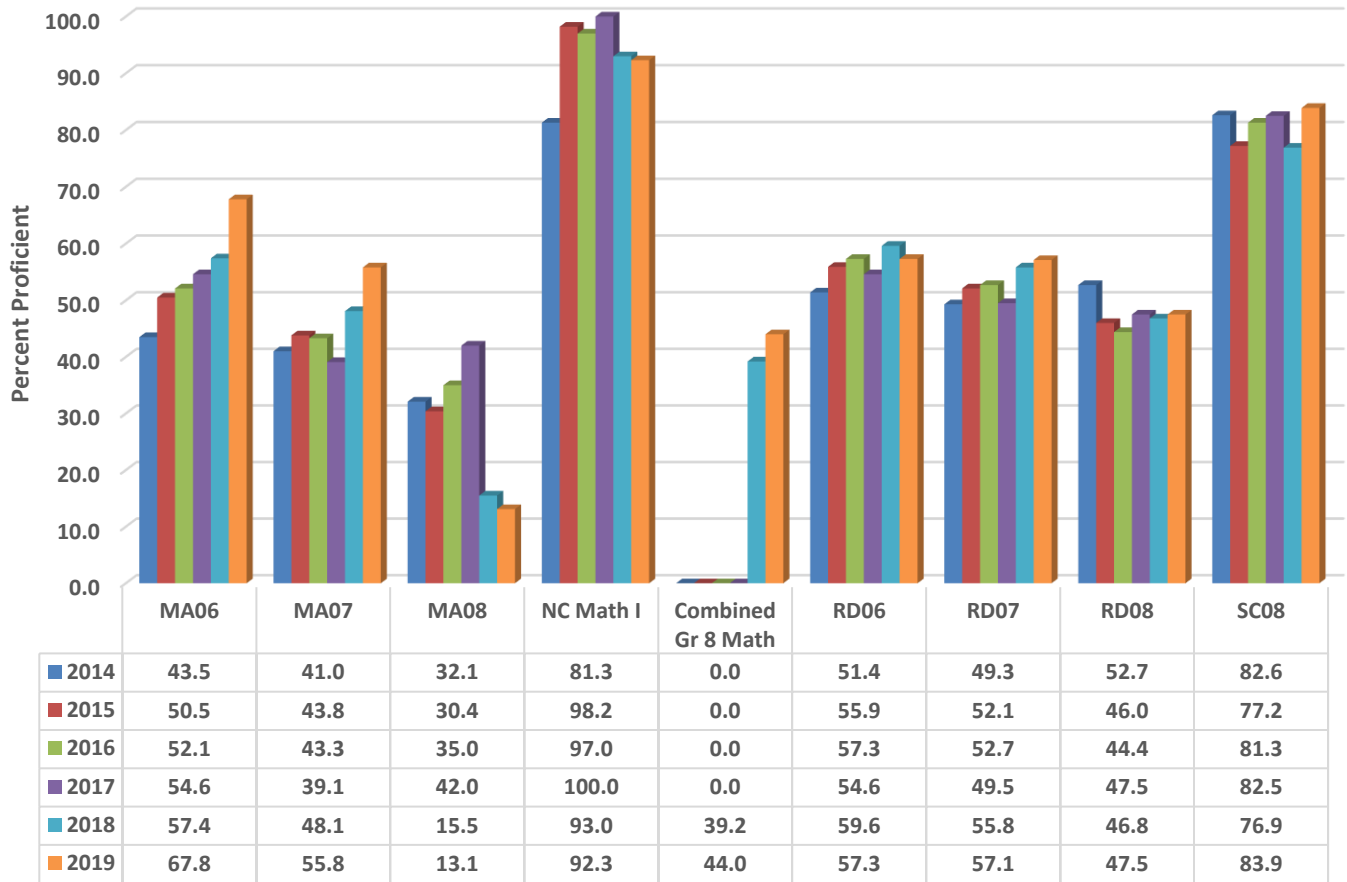


### Northeastern Randolph Middle Six Year Comparison Using GLP



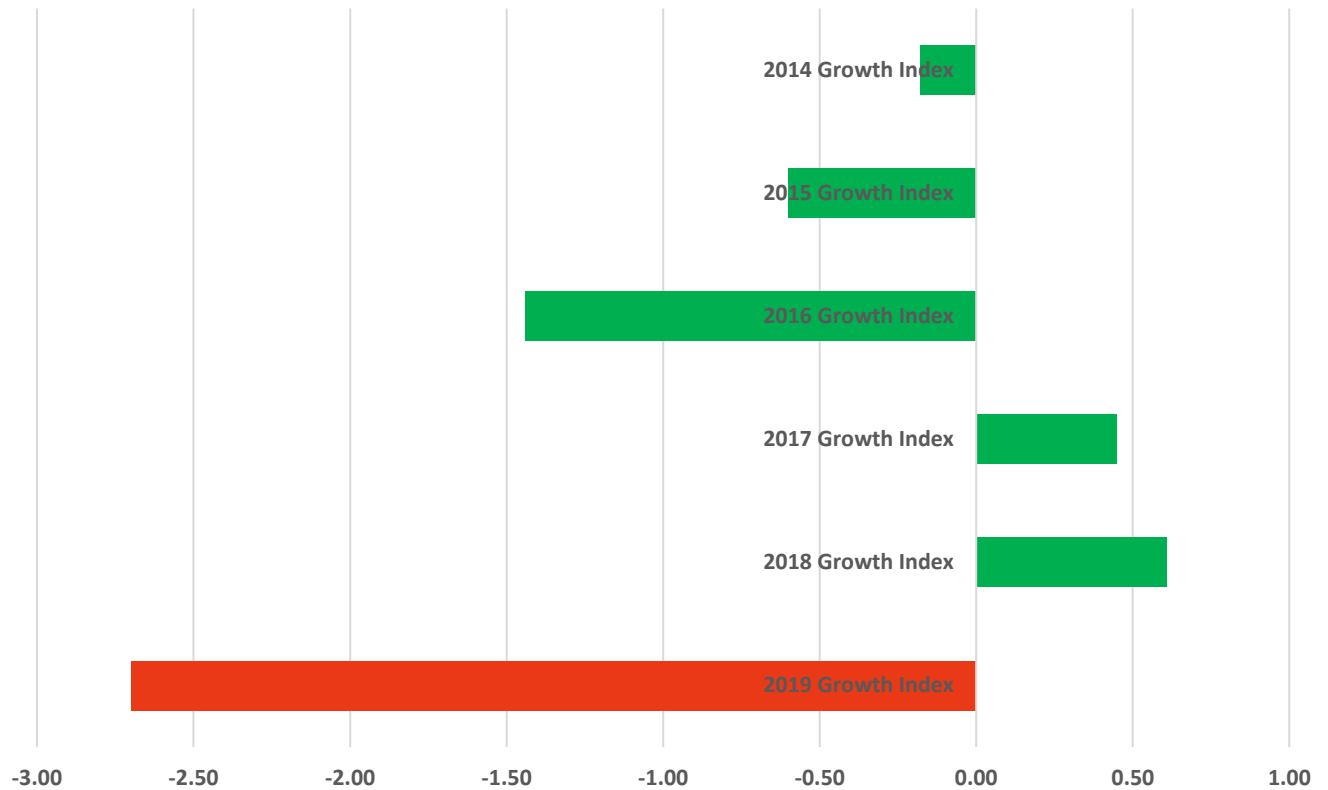
### READY Accountability Model

	CCR Denominator	CCR Percent	GLP Denominator	GLP Percent
2014	1634	42.7	1634	52.3
2015	1575	44.2	1575	52.5
2016	1499	45.2	1499	54.3
2017	1463	47.4	1463	55.0
2018	1350	47.0	1350	54.7
2019	1322	45.0	1322	58.9

### Growth and Participation Targets

	Growth Status	Total Targets	Targets Met	Target Percent
2014	Met Expected Growth	41	30	73.2
2015	Met Expected Growth	36	26	72.2
2016	Met Expected Growth	22	22	100.0
2017	Met Expected Growth	19	19	100.0
2018	Met Expected Growth	19	19	100.0
2019	Did Not Met Expected Growth	17	17	100.0

## Northeastern Randolph Middle Six Year Growth Index



	2019 Growth Index	2018 Growth Index	2017 Growth Index	2016 Growth Index	2015 Growth Index	2014 Growth Index
■ NERMS	-2.70	0.61	0.45	-1.44	-0.60	-0.18

### Growth Index

	School Accountability Type	Index	Level
<b>2014</b>	Math, Reading, Science, and Math I	-0.18	Met Expected Growth
<b>2015</b>	Math, Reading, Science, and Math I	-0.6	Met Expected Growth
<b>2016</b>	Math, Reading, Science, and Math I	-1.44	Met Expected Growth
<b>2017</b>	Math, Reading, Science, and Math I	0.45	Met Expected Growth
<b>2018</b>	Math, Reading, Science, and NC Math I	0.61	Met Expected Growth
<b>2019</b>	Math, Reading, Science, and NC Math I	-2.70	Did Not Met Expected Growth