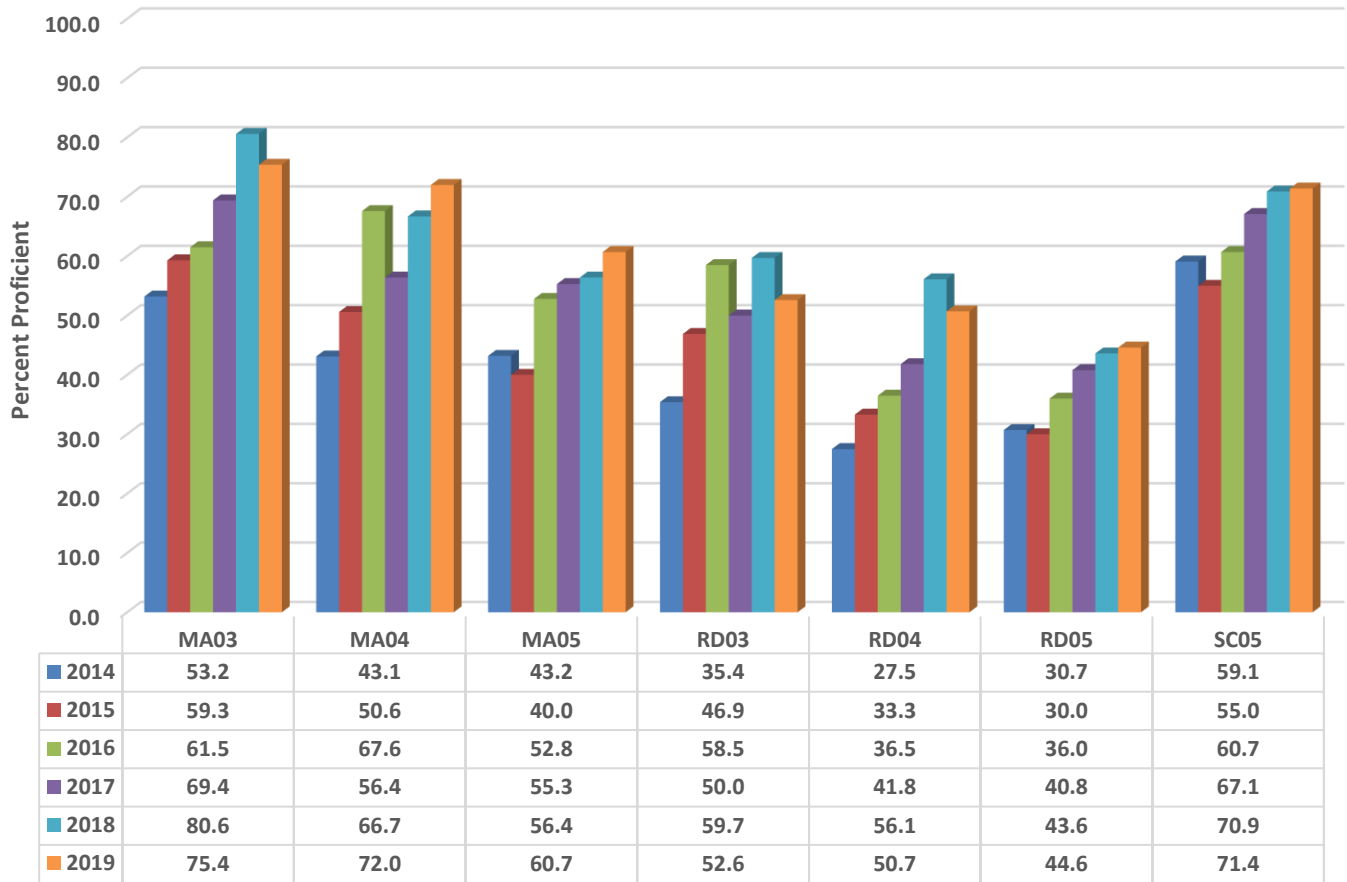


Ramseur Elementary Six Year Comparison Using GLP



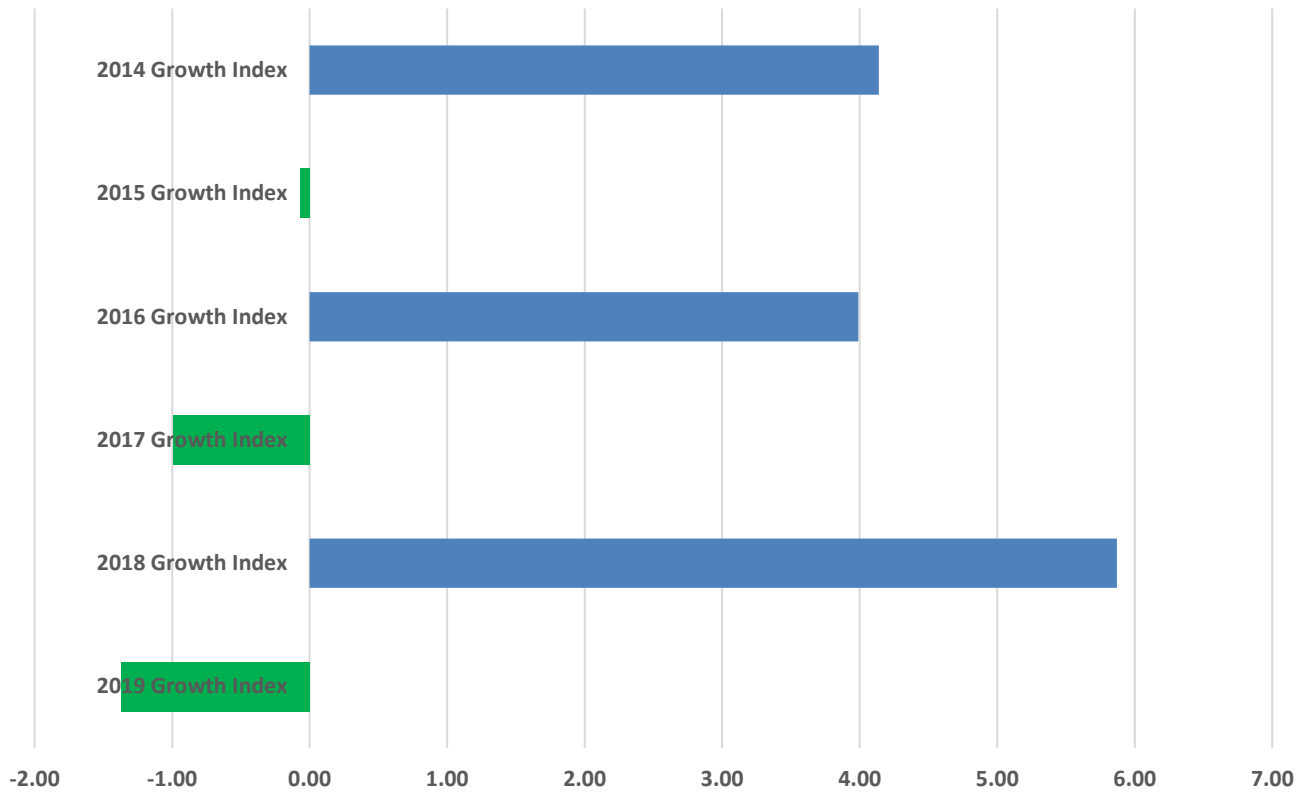
READY Accountability Model

	CCR Denominator	CCR Percent	GLP Denominator	GLP Percent
2014	524	31.7	524	42.6
2015	504	34.5	504	45.4
2016	545	45.1	545	52.8
2017	462	44.8	462	54.5
2018	431	54.1	431	62.4
2019	432	46.8	432	61.1

Growth and Participation Targets

	Growth Status	Total Targets	Targets Met	Percent Met
2014	Exceeded Expected Growth	31	24	77.4
2015	Met Expected Growth	27	19	70.4
2016	Exceeded Expected Growth	16	16	100.0
2017	Met Expected Growth	13	13	100.0
2018	Exceeded Expected Growth	12	12	100.0
2019	Met Expected Growth	13	13	100.0

Ramseur Elementary Six Year Growth Index



	2019 Growth Index	2018 Growth Index	2017 Growth Index	2016 Growth Index	2015 Growth Index	2014 Growth Index
■ Ramseur	-1.37	5.87	-0.99	3.99	-0.07	4.14

Growth Index

	School Accountability Type	Index	Level
2014	Math, Reading, and Science	4.14	Exceeded Expected Growth
2015	Math, Reading, and Science	-0.07	Met Expected Growth
2016	Math, Reading, and Science	3.99	Exceeded Expected Growth
2017	Math, Reading, and Science	-0.99	Met Expected Growth
2018	Math, Reading, and Science	5.87	Exceeded Expected Growth
2019	Math, Reading, and Science	-1.37	Met Expected Growth