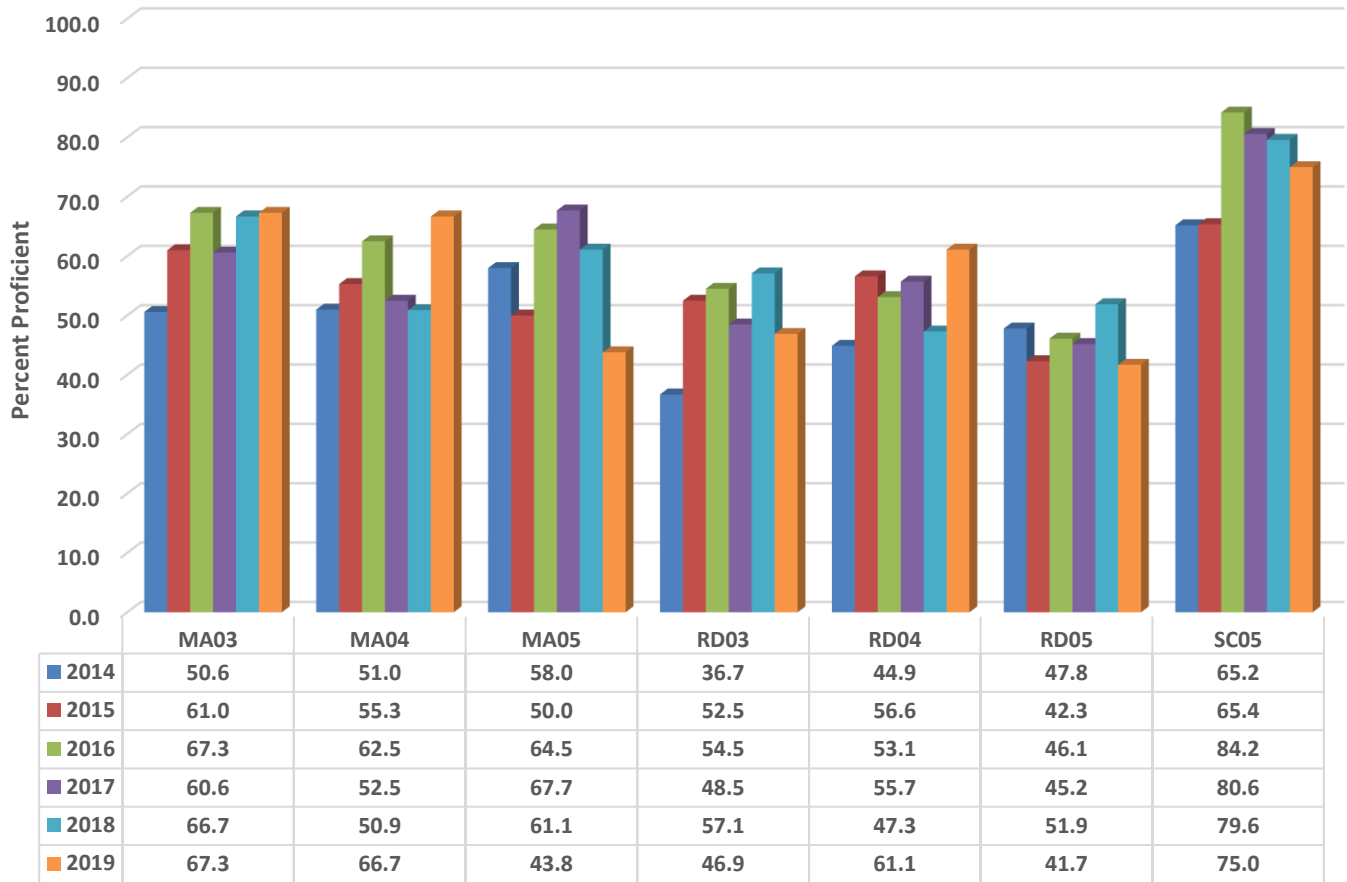


Coleridge Elementary Six Year Comparison Using GLP



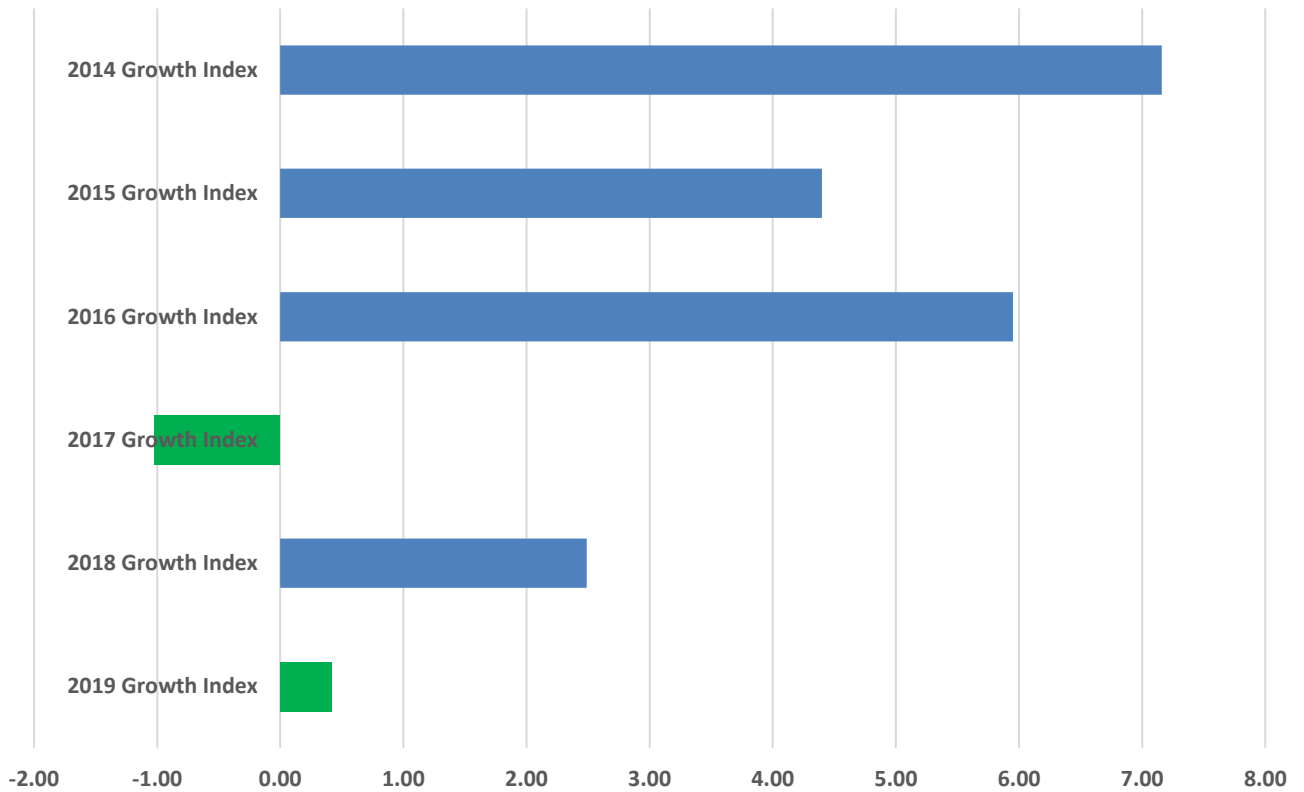
READY Accountability Model

| | CCR Denominator | CCR Percent | GLP Denominator | GLP Percent |
|------|-----------------|-------------|-----------------|-------------|
| 2014 | 463 | 40.8 | 463 | 50.5 |
| 2015 | 426 | 40.8 | 426 | 54.9 |
| 2016 | 466 | 52.6 | 466 | 62.0 |
| 2017 | 440 | 46.1 | 440 | 58.6 |
| 2018 | 356 | 49.2 | 356 | 59.0 |
| 2019 | 314 | 40.4 | 314 | 57.0 |

Growth and Participation Targets

| | Growth Status | Total Targets | Targets Met | Target Percent |
|------|--------------------------|---------------|-------------|----------------|
| 2014 | Exceeded Expected Growth | 23 | 19 | 82.6 |
| 2015 | Exceeded Expected Growth | 25 | 16 | 64.0 |
| 2016 | Exceeded Expected Growth | 13 | 13 | 100.0 |
| 2017 | Met Expected Growth | 13 | 13 | 100.0 |
| 2018 | Exceeded Expected Growth | 11 | 11 | 100.0 |
| 2019 | Met Expected Growth | 11 | 11 | 100.0 |

Coleridge Elementary Six Year Growth Index



| | 2019 Growth Index | 2018 Growth Index | 2017 Growth Index | 2016 Growth Index | 2015 Growth Index | 2014 Growth Index |
|-------------|-------------------|-------------------|-------------------|-------------------|-------------------|-------------------|
| ■ Coleridge | 0.42 | 2.49 | -1.02 | 5.95 | 4.40 | 7.16 |

Growth Index

| | School Accountability Type | Index | Level |
|-------------|----------------------------|-------|--------------------------|
| 2014 | Math, Reading, and Science | 7.16 | Exceeded Expected Growth |
| 2015 | Math, Reading, and Science | 4.4 | Exceeded Expected Growth |
| 2016 | Math, Reading, and Science | 5.95 | Exceeded Expected Growth |
| 2017 | Math, Reading, and Science | -1.02 | Met Expected Growth |
| 2018 | Math, Reading, and Science | 2.49 | Exceeded Expected Growth |
| 2019 | Math, Reading, and Science | 0.42 | Met Expected Growth |