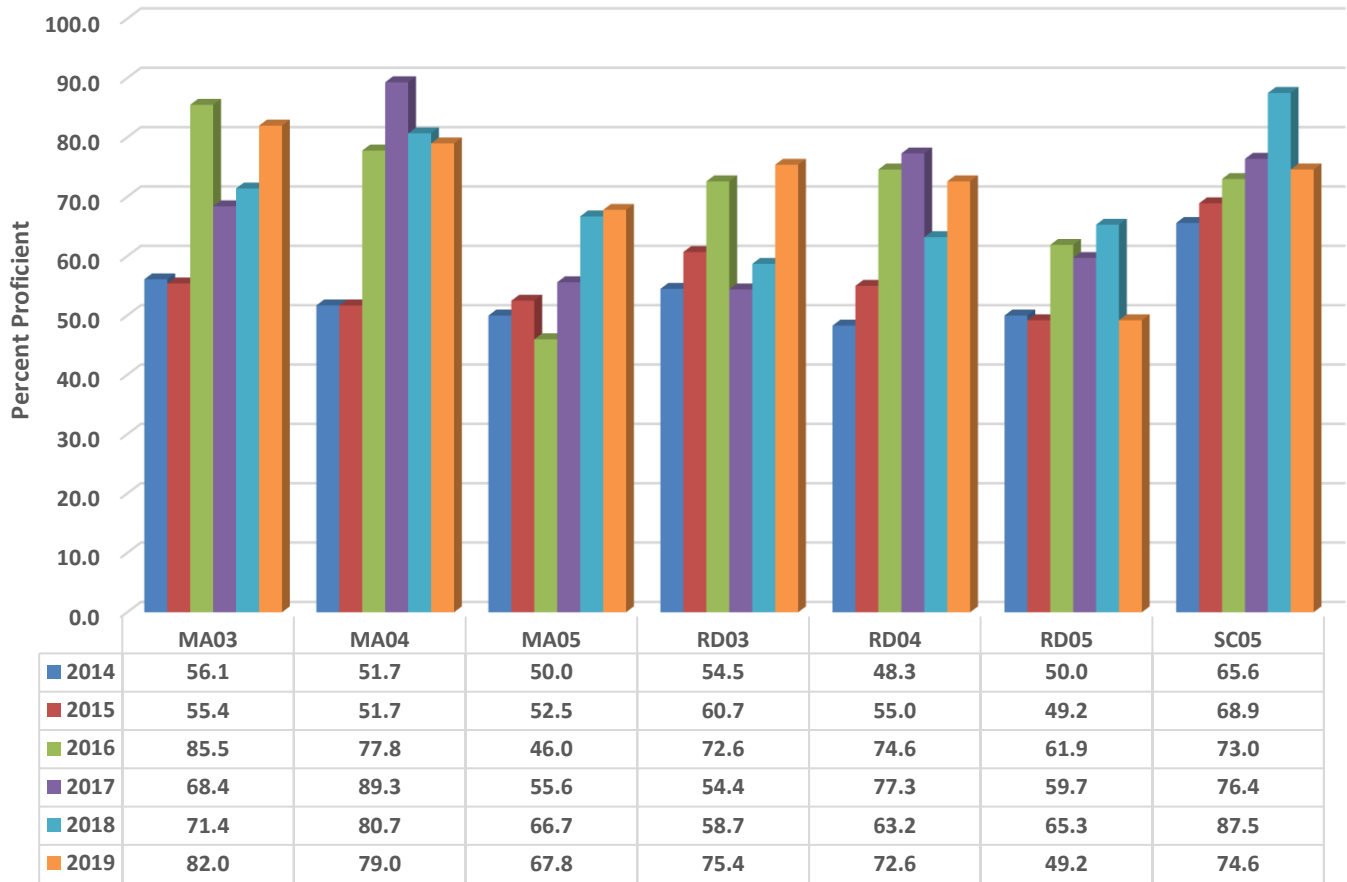


Archdale Elementary Six Year Comparison Using GLP



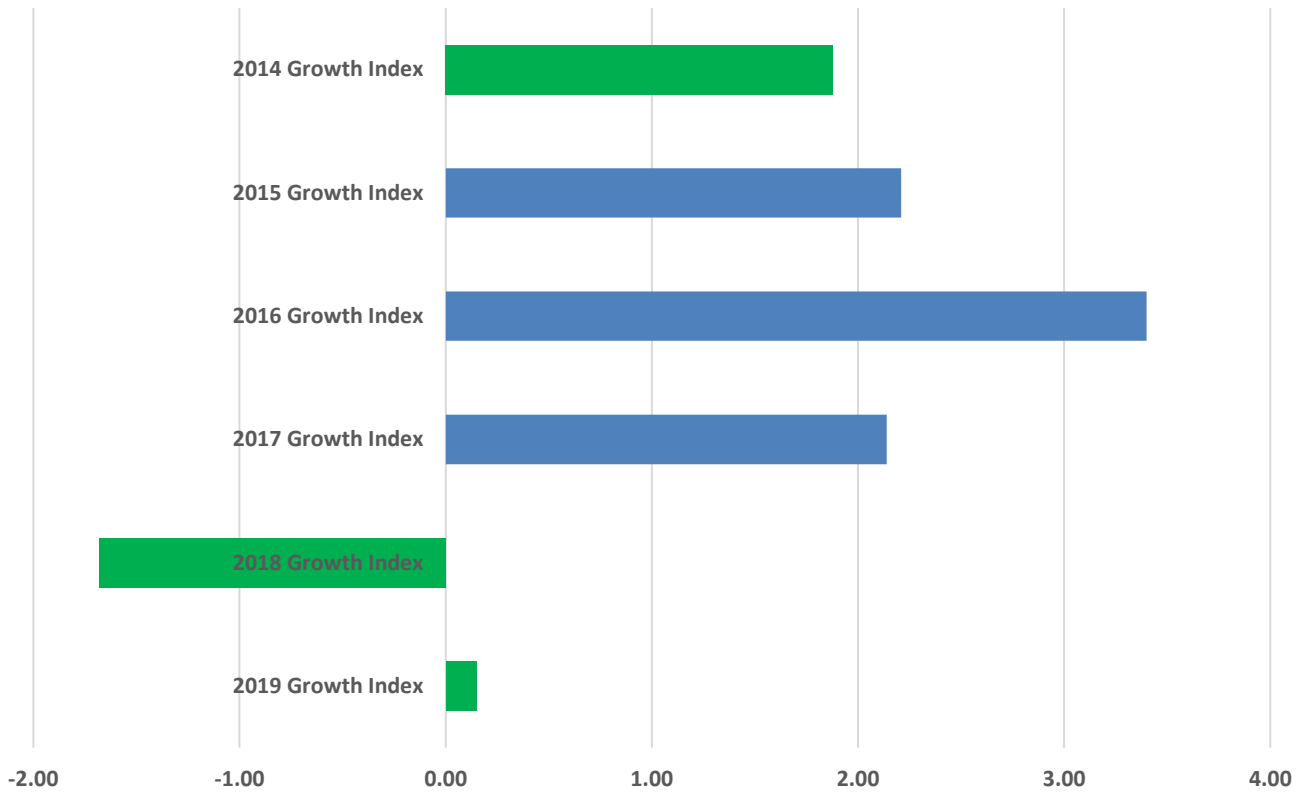
READY Accountability Model

	CCR Denominator	CCR Percent	GLP Denominator	GLP Percent
2014	444	40.3	444	53.8
2015	415	42.4	415	56.1
2016	439	58.8	439	70.2
2017	480	58.3	480	69.4
2018	456	61.6	456	70.6
2019	423	57.2	423	71.6

Growth and Participation Targets

	Growth Status	Total Targets	Targets Met	Target Percent
2014	Met Expected Growth	25	21	84.0
2015	Exceeded Expected Growth	23	16	69.6
2016	Exceeded Expected Growth	11	11	100.0
2017	Exceeded Expected Growth	11	11	100.0
2018	Met Expected Growth	13	13	100.0
2019	Met Expected Growth	11	11	100.0

Archdale Elementary Six Year Growth Index



	2019 Growth Index	2018 Growth Index	2017 Growth Index	2016 Growth Index	2015 Growth Index	2014 Growth Index
■ Archdale	0.15	-1.68	2.14	3.40	2.21	1.88

Growth Index

	School Accountability Type	Index	Level
2014	Math, Reading, and Science	1.88	Met Expected Growth
2015	Math, Reading, and Science	2.21	Exceeded Expected Growth
2016	Math, Reading, and Science	3.4	Exceeded Expected Growth
2017	Math, Reading, and Science	2.14	Exceeded Expected Growth
2018	Math, Reading, and Science	-1.68	Met Expected Growth
2019	Math, Reading, and Science	0.15	Met Expected Growth