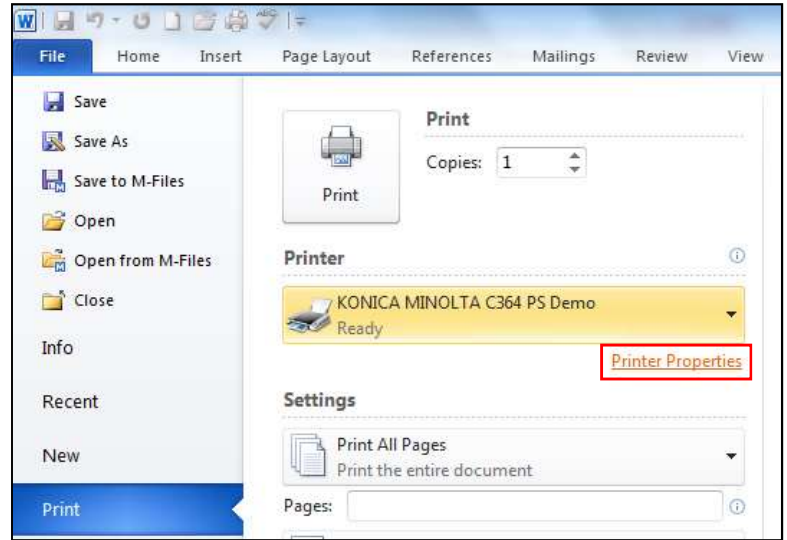
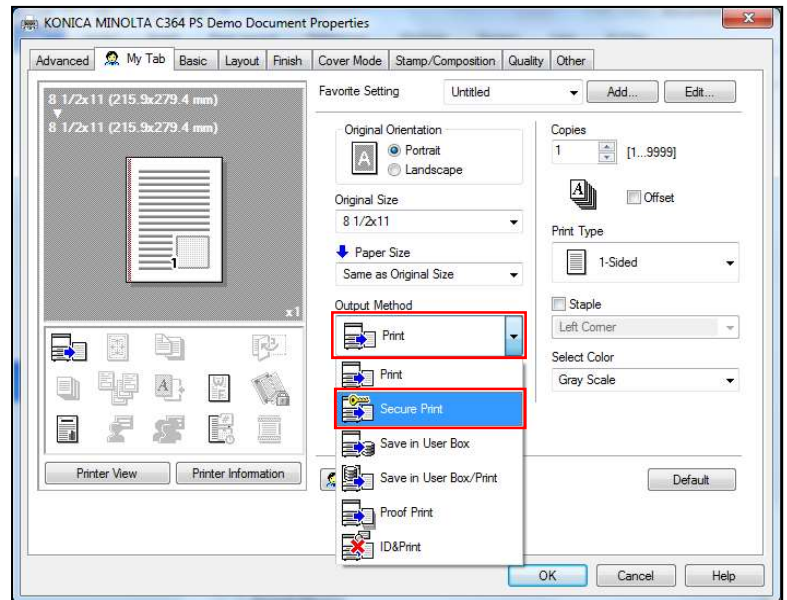


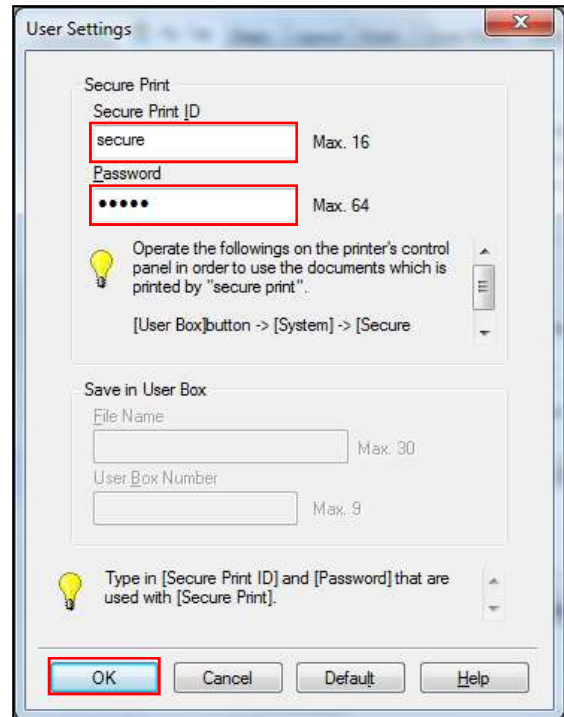
1. **Print** the document that you want to secure print
2. Click **Printer Properties (or Properties)**



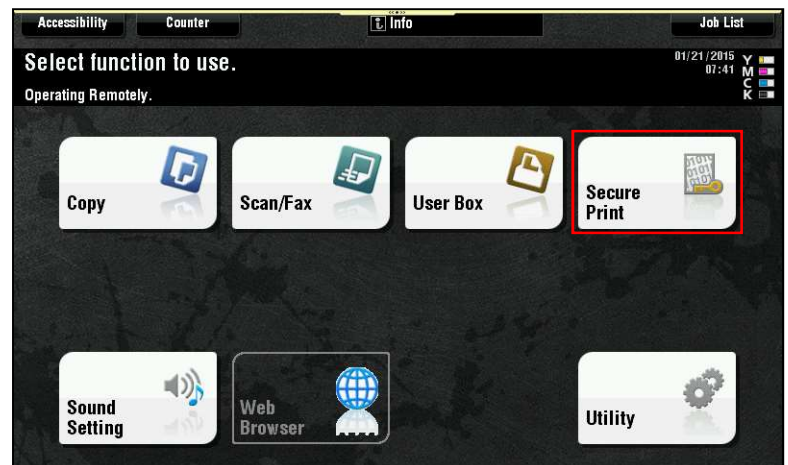
3. Click **Output Method**
4. Click **Secure Print**



5. In the new window type an **ID** of your choice in **Secure Print ID**
6. Type a password of your choice in **Password**
7. Click **OK**
8. Change the settings to match your print needs
9. Click **OK** when finished
10. Click **Print**



11. Go to the copier
12. Touch the **Menu** button (upper right corner)
13. Touch **Secure Print**



14. Type in the **Document ID** that you entered in the print driver – (in this case, Secure)
15. Touch **Password**
16. Type in the password for the ‘**Secure Print Document**’
17. Touch **OK**



18. Select the document by touching the **Thumbnail**
19. Touch **Print** (If necessary, the print conditions can be changed)
20. Touch the **Start** key in the control panel (To cancel printing the job, touch **Cancel**)

The document will print

