

Bells, Clocks, and Intercoms & Phones

Engaging each student with a focus on scholarship, character, and humanity



Bells, Clocks, and Intercoms

- Emergency paging not working at some sites (all calls, features to specific rooms inoperative)
- Phone to intercom paging not working (requires manual paging from main console)
- Bell scheduling requires repeated manual entry and may not hold/ save
- Majority of sites are in various states of component failure
- Parts are no longer available and not supported (over 20 years old)
- Classroom clock replacement will be analog



Intercom Console –
Frequent downtime and repairs needed or left in disrepair due to lack of parts



Engaging each student with a focus on scholarship, character, and humanity



Old Intercom Towers will be removed freeing up much needed space.



Engaging each student with a focus on scholarship, character, and humanity

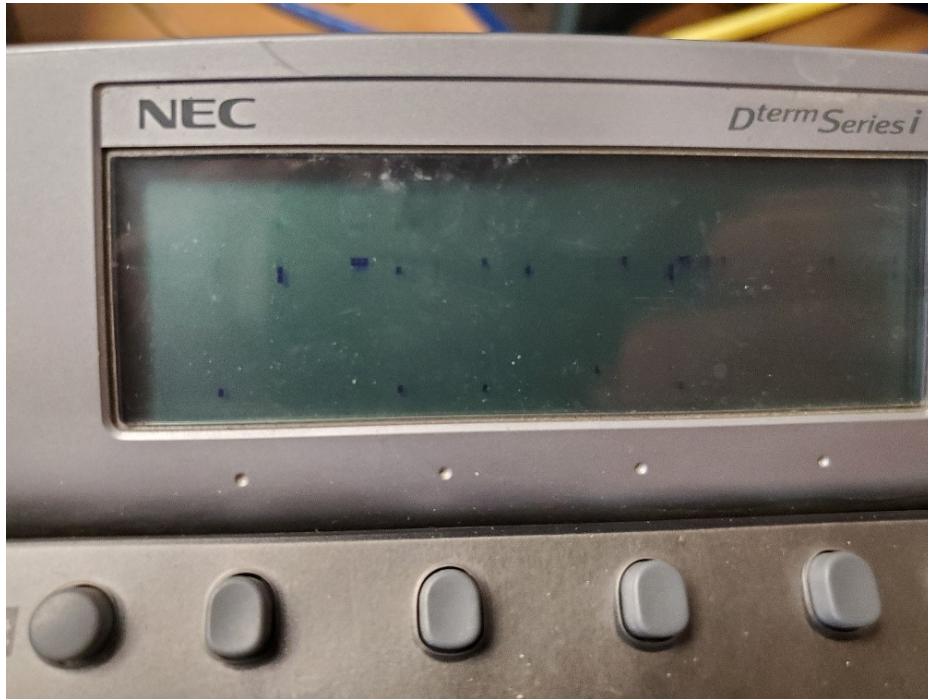


Phones

- Main phone servers require frequent manual resetting
- Limited or no expandability when new phone lines are needed
- Burnt out screens on 50% of the phones
- Internal circuitry failing or have failed (paging related)
- Hung by doors in most teachers' rooms
- Not compatible with newer intercom systems
- Parts are no longer available and not supported
(majority are 20 years old)



Bad Phone Screens



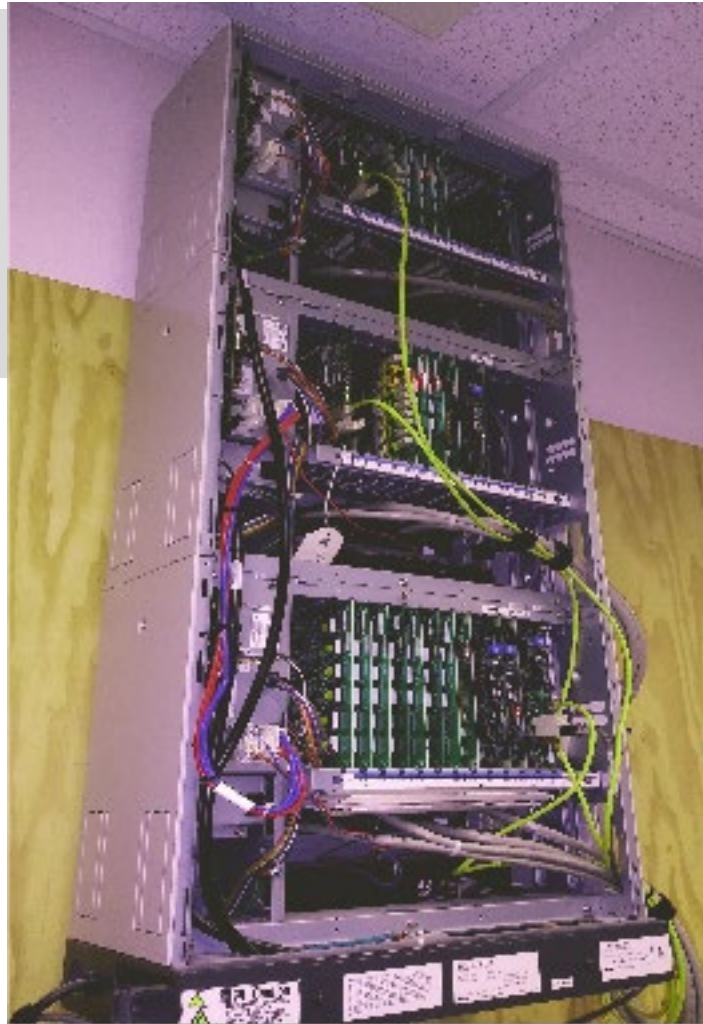
New Internet Protocol Phones-
Single connection for computer and
phone.



Engaging each student with a focus on scholarship, character, and humanity



Old large Telecom Servers (PBX), excessive heat, frequent emergency resets required during the day.



New phone servers – Space saving, low heat output, energy efficient, serviceable, manufacturer supported. (Datacenter Rack mountable)



Engaging each student with a focus on scholarship, character, and humanity

