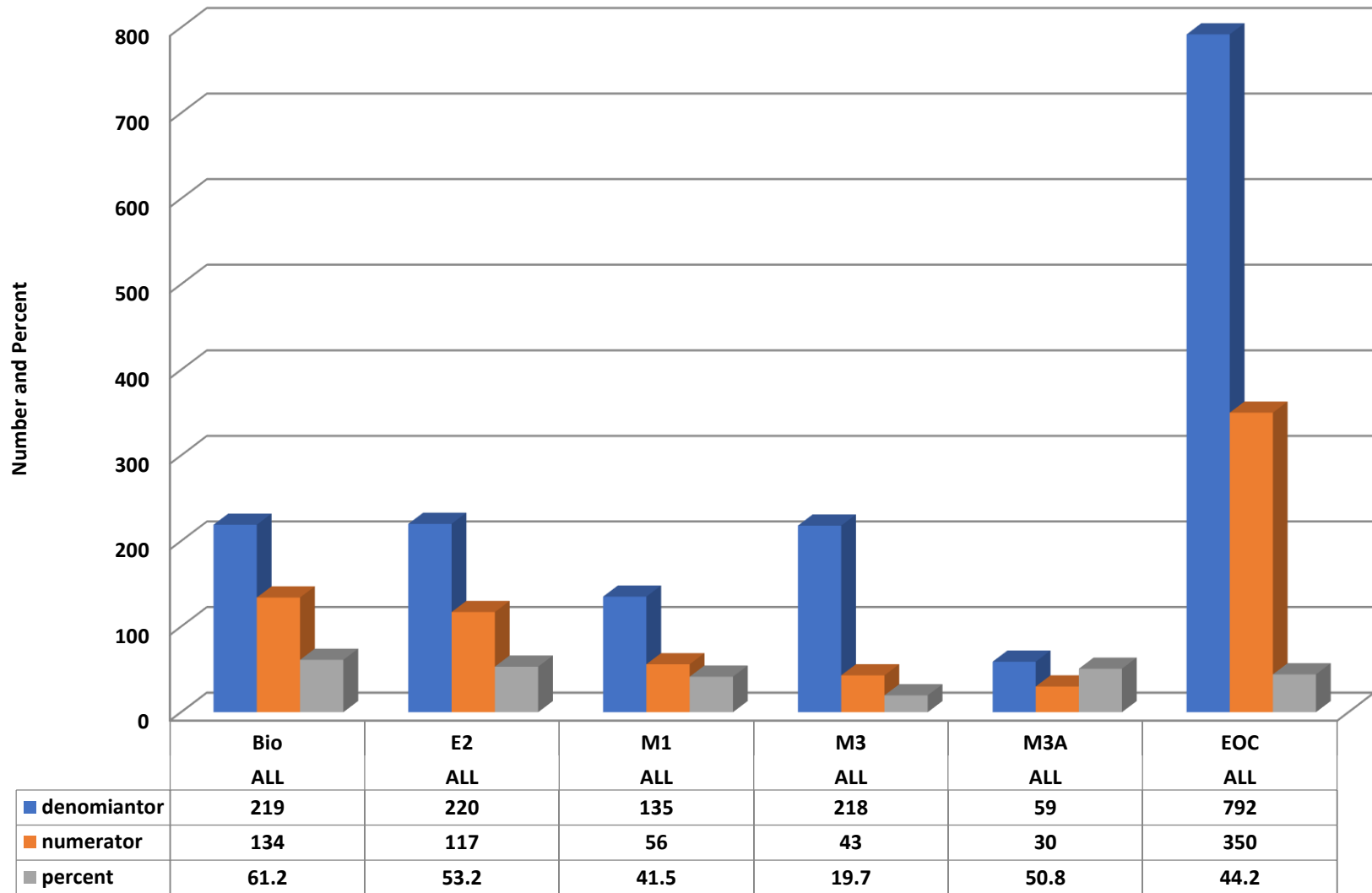
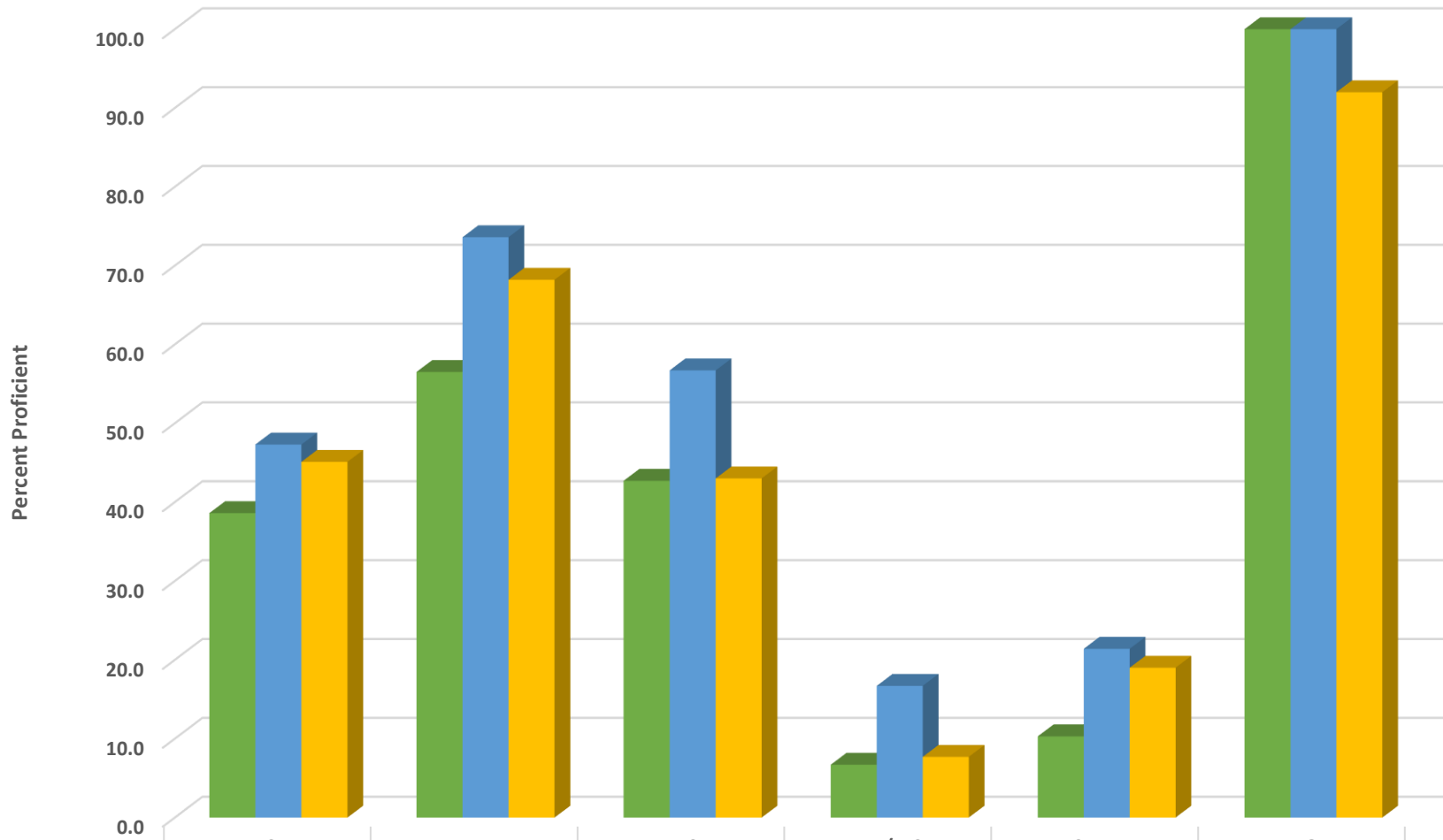


Southwestern Randolph High School 2018-2019 All EOC's GLP

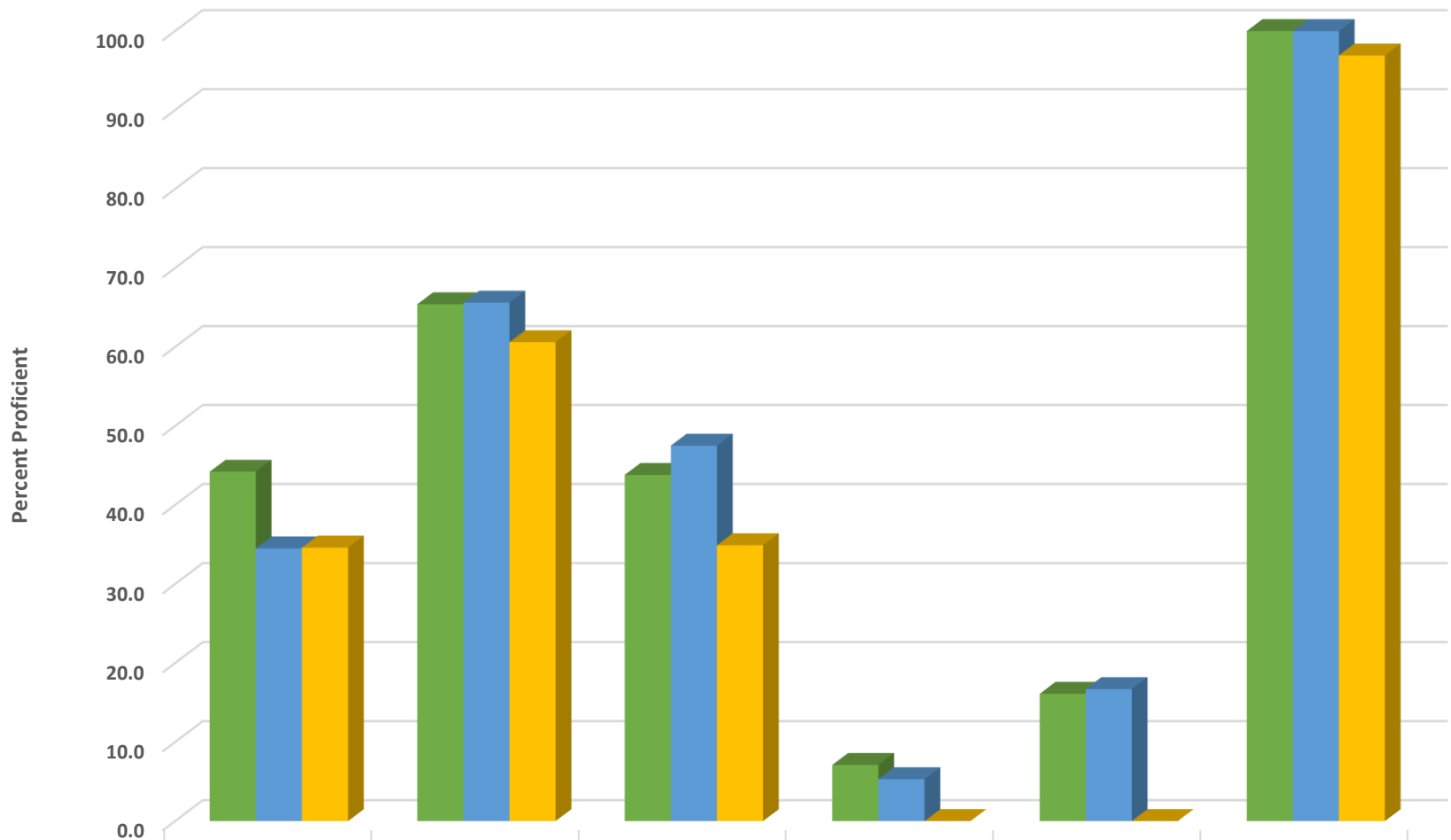


Southwestern Randolph High Biology Percent Proficient by Subgroups



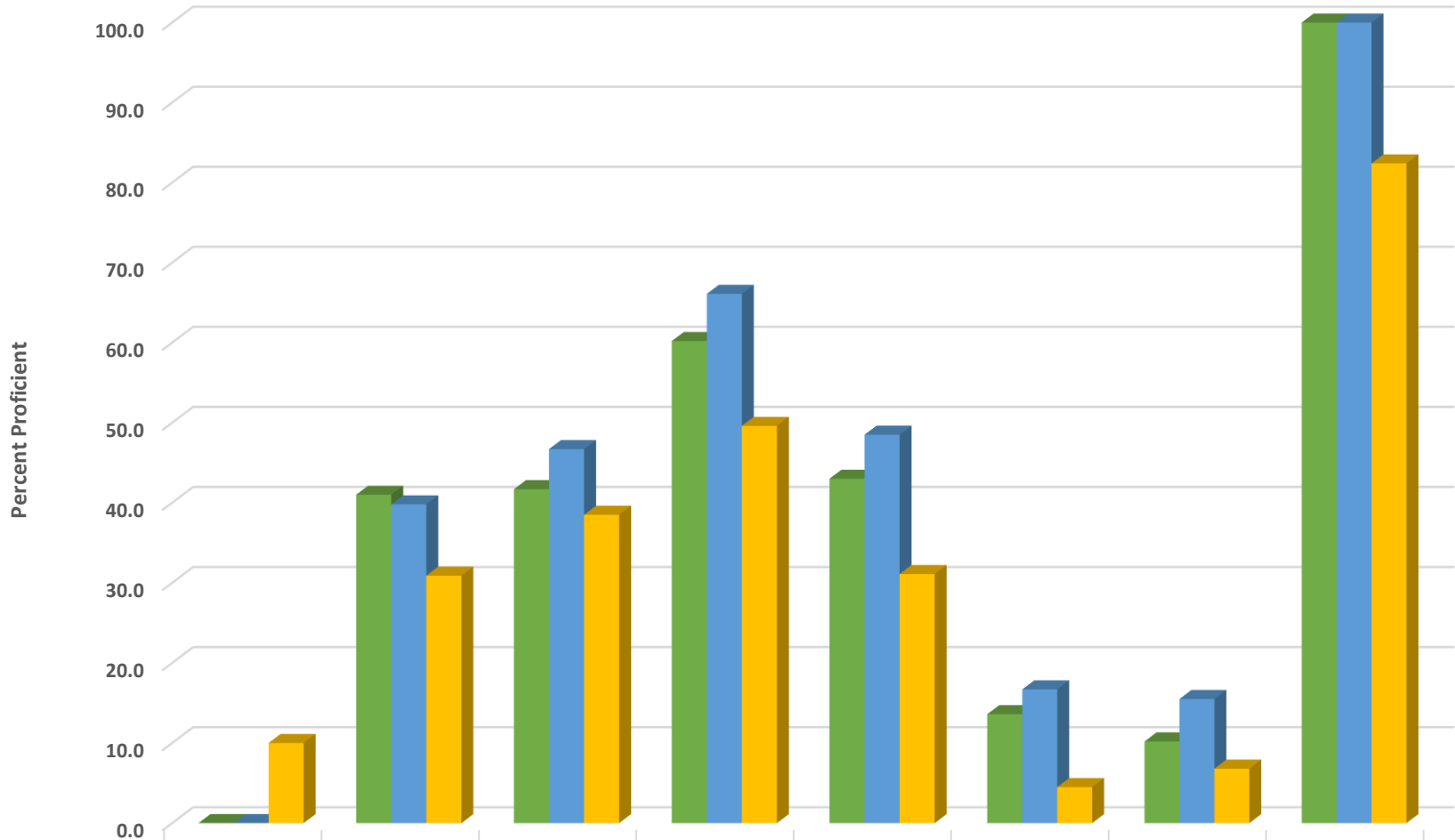
| | | | | | | |
|-----------------|------|------|------|------|------|-------|
| ■ 2017 prof pct | 38.6 | 56.5 | 42.7 | 6.7 | 10.3 | 100.0 |
| ■ 2018 prof pct | 47.3 | 73.6 | 56.7 | 16.7 | 21.4 | 100.0 |
| ■ 2019 prof pct | 45.1 | 68.2 | 43.0 | 7.7 | 19.0 | 92.0 |

Southwestern Randolph High English II Percent Proficient by Subgroups



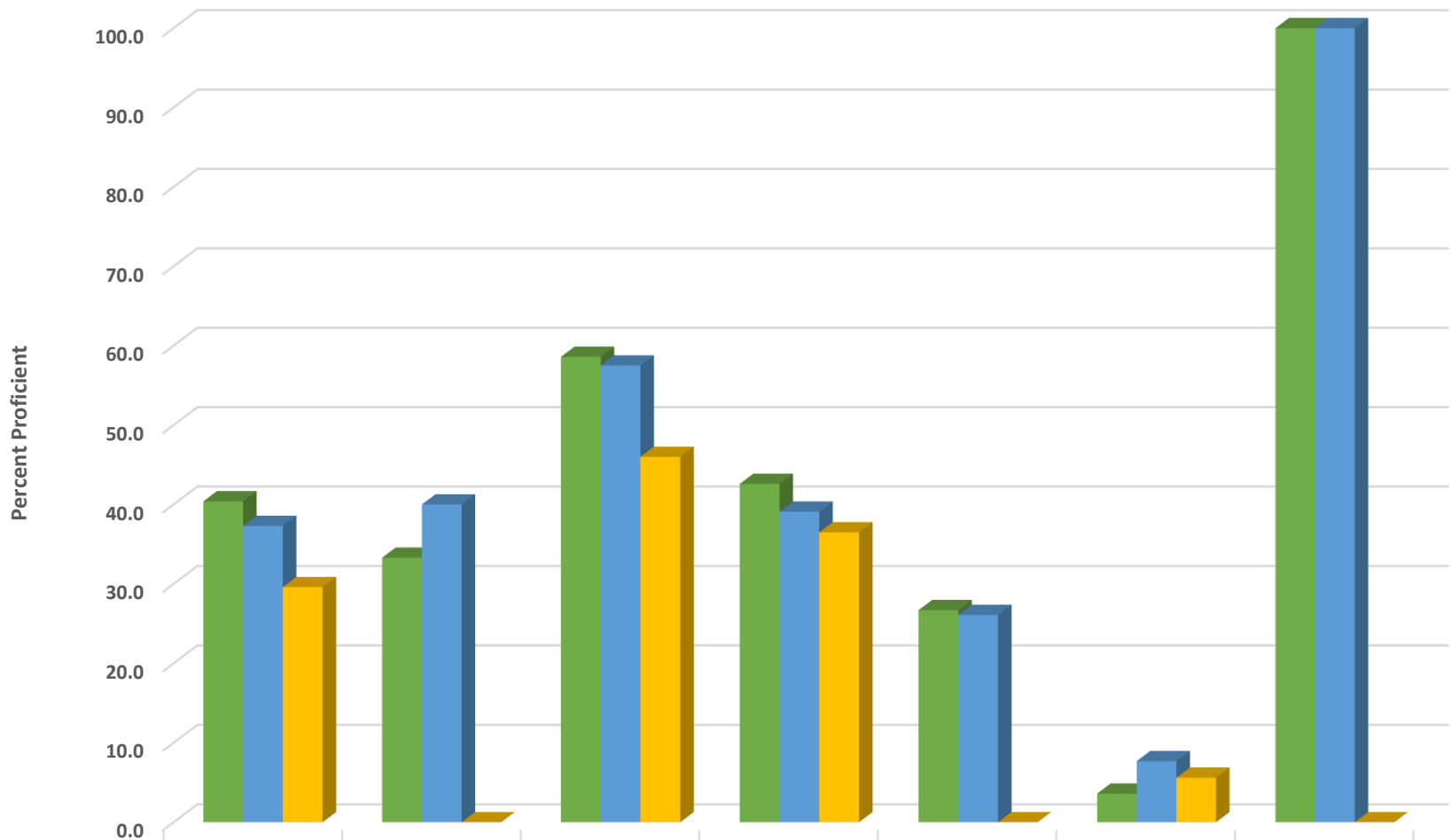
| | HISP | WHITE | EDS | LEP/ELS | SWD | AIG |
|---------------|------|-------|------|---------|------|-------|
| 2017 prof pct | 44.2 | 65.4 | 43.8 | 7.1 | 16.1 | 100.0 |
| 2018 prof pct | 34.5 | 65.6 | 47.5 | 5.3 | 16.7 | 100.0 |
| 2019 prof pct | 34.6 | 60.6 | 34.9 | 0.0 | 0.0 | 96.9 |

Southwestern Randolph High End-of-Course Percent Proficient by Subgroups



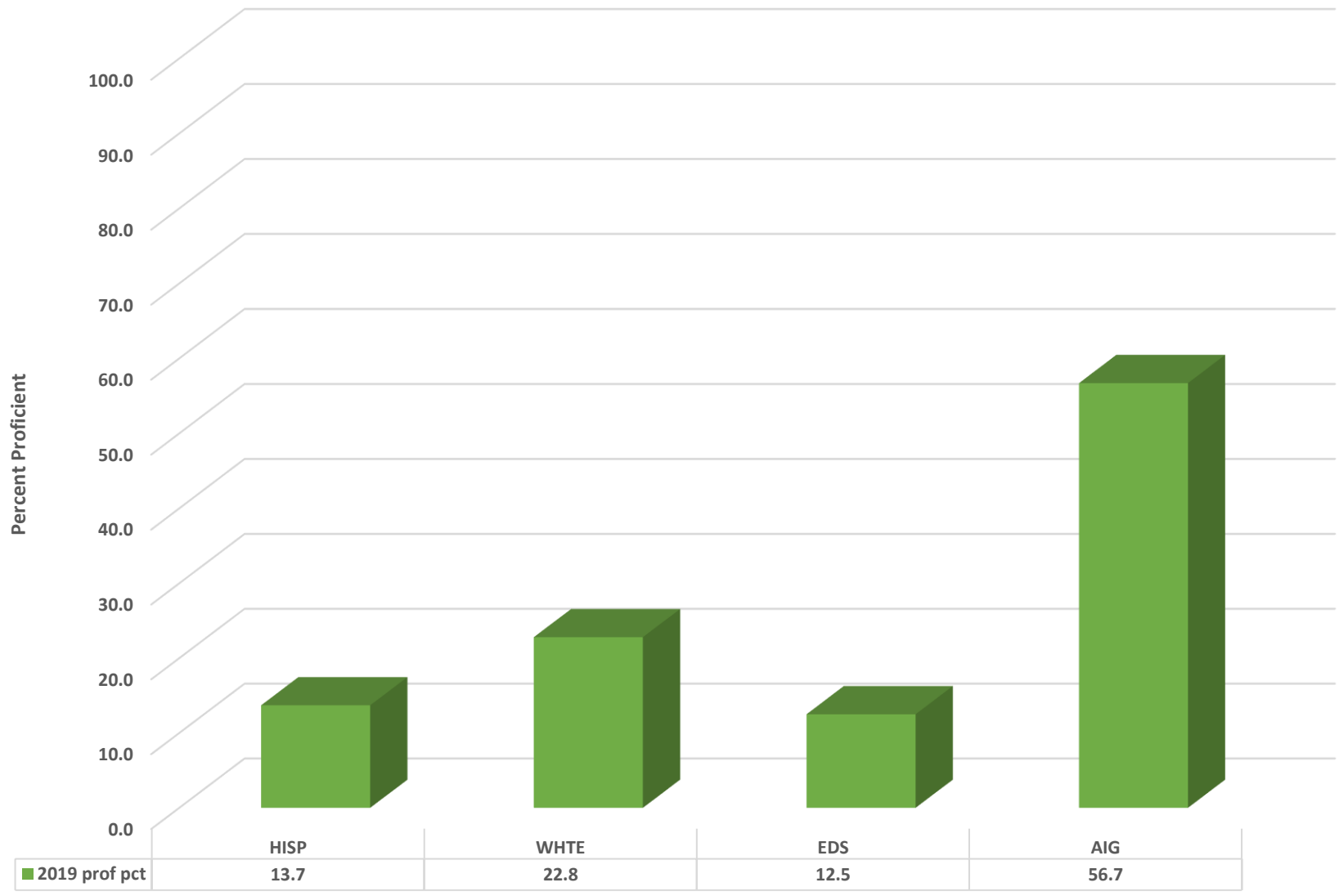
| | BLCK | HISP | MULT | WHITE | EDS | LEP/ELS | SWD | AIG |
|---------------|------|------|------|-------|------|---------|------|-------|
| 2017 prof pct | 0.0 | 41.0 | 41.7 | 60.2 | 43.0 | 13.6 | 10.2 | 100.0 |
| 2018 prof pct | 0.0 | 39.8 | 46.7 | 66.1 | 48.5 | 16.7 | 15.5 | 100.0 |
| 2019 prof pct | 10.0 | 30.9 | 38.5 | 49.6 | 31.1 | 4.5 | 6.8 | 82.4 |

Southwestern Randolph High NC Math I Percent Proficient by Subgroups



| | HISP | MULT | WHITE | EDS | LEP/ELS | SWD | AIG |
|---------------|------|------|-------|------|---------|-----|-------|
| 2017 prof pct | 40.4 | 33.3 | 58.6 | 42.6 | 26.7 | 3.6 | 100.0 |
| 2018 prof pct | 37.3 | 40.0 | 57.5 | 39.1 | 26.1 | 7.7 | 100.0 |
| 2019 prof pct | 29.6 | 0.0 | 46.0 | 36.5 | 0.0 | 5.6 | 0.0 |

Southwestern Randolph High NC Math III Overall Percent Proficient by Subgroups



Southwestern Randolph High NC Math III Accelerated Percent Proficient by Subgroups

