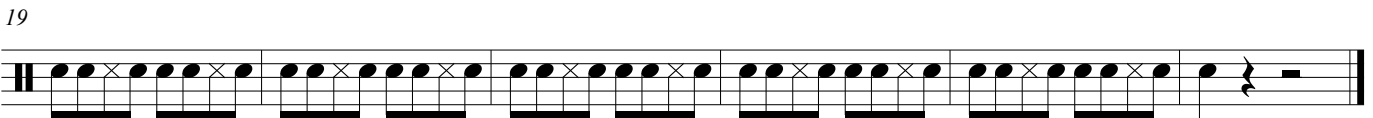
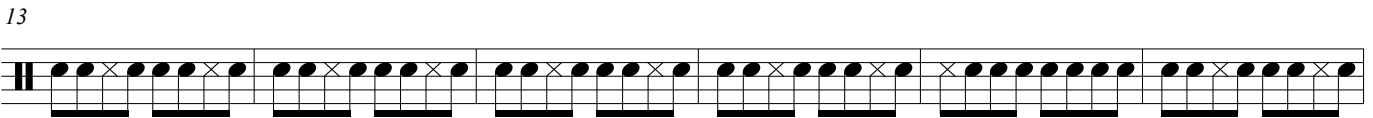
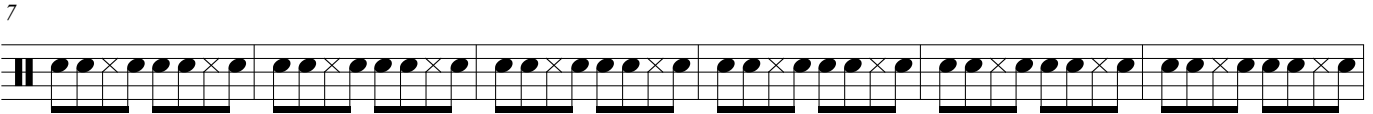
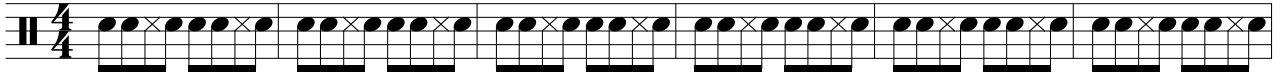


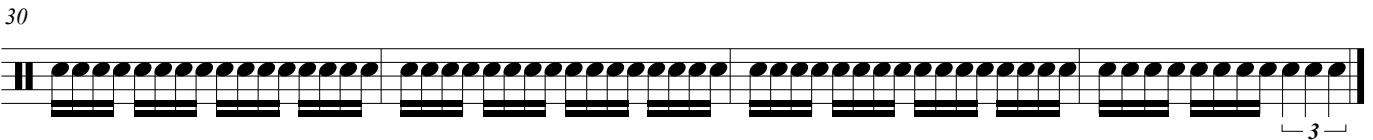
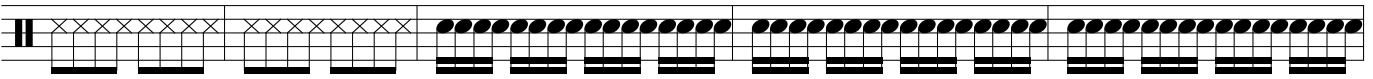
Percussion

Pep Band Tunes

arr. J. D. Frederick and Kacey Reynolds



25 #2 - Eye of the "Panther" (Tiger..)



34 Pompeii



Pep Band Tunes

2

Trumpets

43

Musical notation for Trumpets, measure 43. The staff is in 12/8 time. The melody consists of eighth notes with stems pointing down, alternating between quarter and eighth notes. The piece ends with a double bar line and a 4/4 time signature.

48

Fancy

Musical notation for Fancy, measure 48. The staff is in 4/4 time. The melody consists of quarter notes with stems pointing down, alternating between quarter and eighth notes. The piece ends with a double bar line.

54

Musical notation for Fancy, measure 54. The staff is in 4/4 time. The melody consists of quarter notes with stems pointing down, alternating between quarter and eighth notes. The piece ends with a double bar line.

61

Charge

Musical notation for Charge, measure 61. The staff is in 4/4 time. The melody consists of quarter notes with stems pointing down, alternating between quarter and eighth notes. The piece ends with a double bar line and a 6/8 time signature.

66

We Will Rock You

Musical notation for We Will Rock You, measure 66. The staff is in 4/4 time. The melody consists of quarter notes with stems pointing down, alternating between quarter and eighth notes. The piece ends with a double bar line.

70

Go Big Blue!

Musical notation for Go Big Blue!, measure 70. The staff is in 3/4 time. The melody consists of quarter notes with stems pointing down, alternating between quarter and eighth notes. The piece ends with a double bar line.

75

Musical notation for Go Big Blue!, measure 75. The staff is in 3/4 time. The melody consists of quarter notes with stems pointing down, alternating between quarter and eighth notes. The piece ends with a double bar line.

81

Musical notation for Go Big Blue!, measure 81. The staff is in 3/4 time. The melody consists of quarter notes with stems pointing down, alternating between quarter and eighth notes. The piece ends with a double bar line.