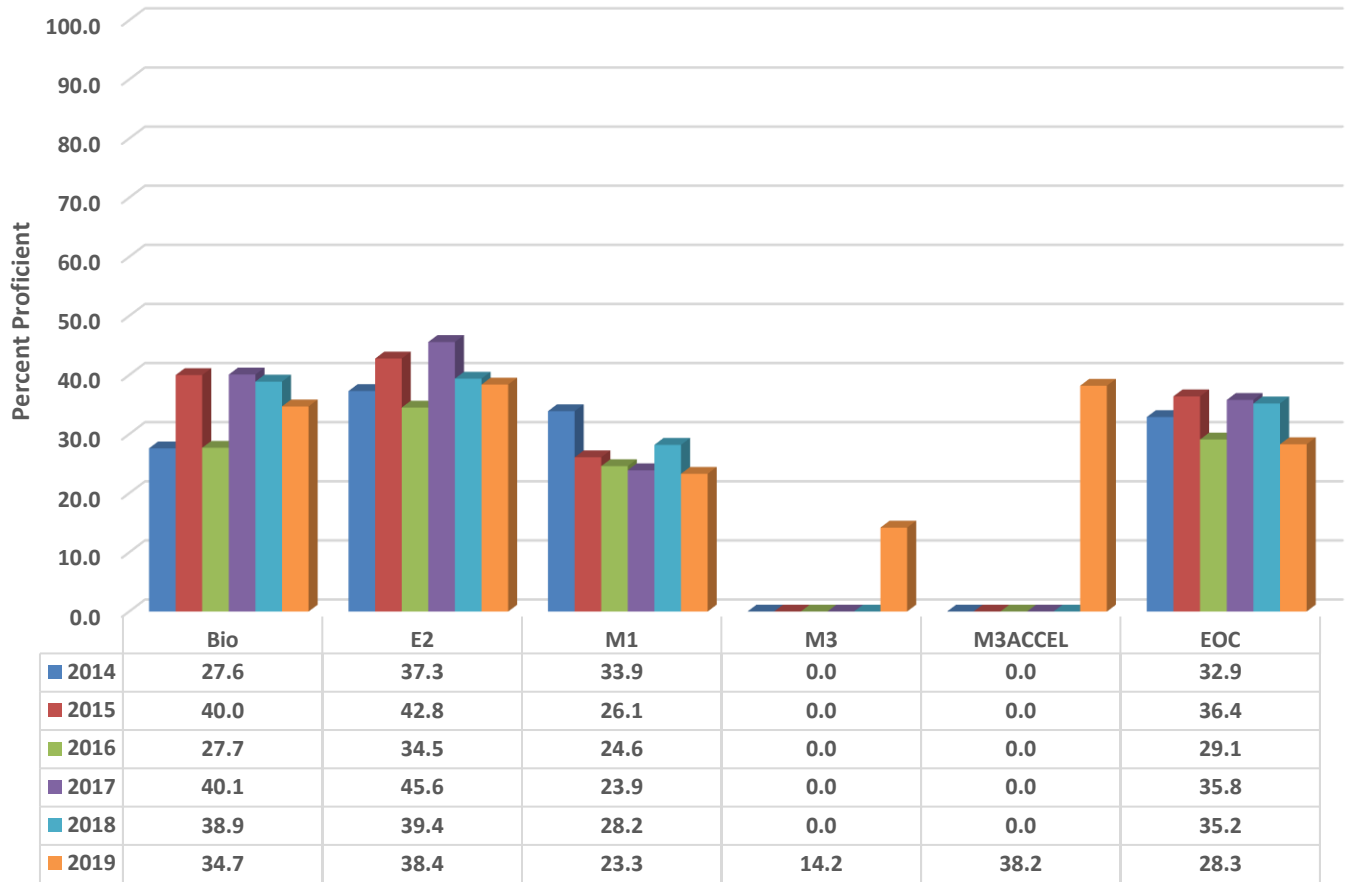


Eastern Randolph High Six Year Comparison Using GLP



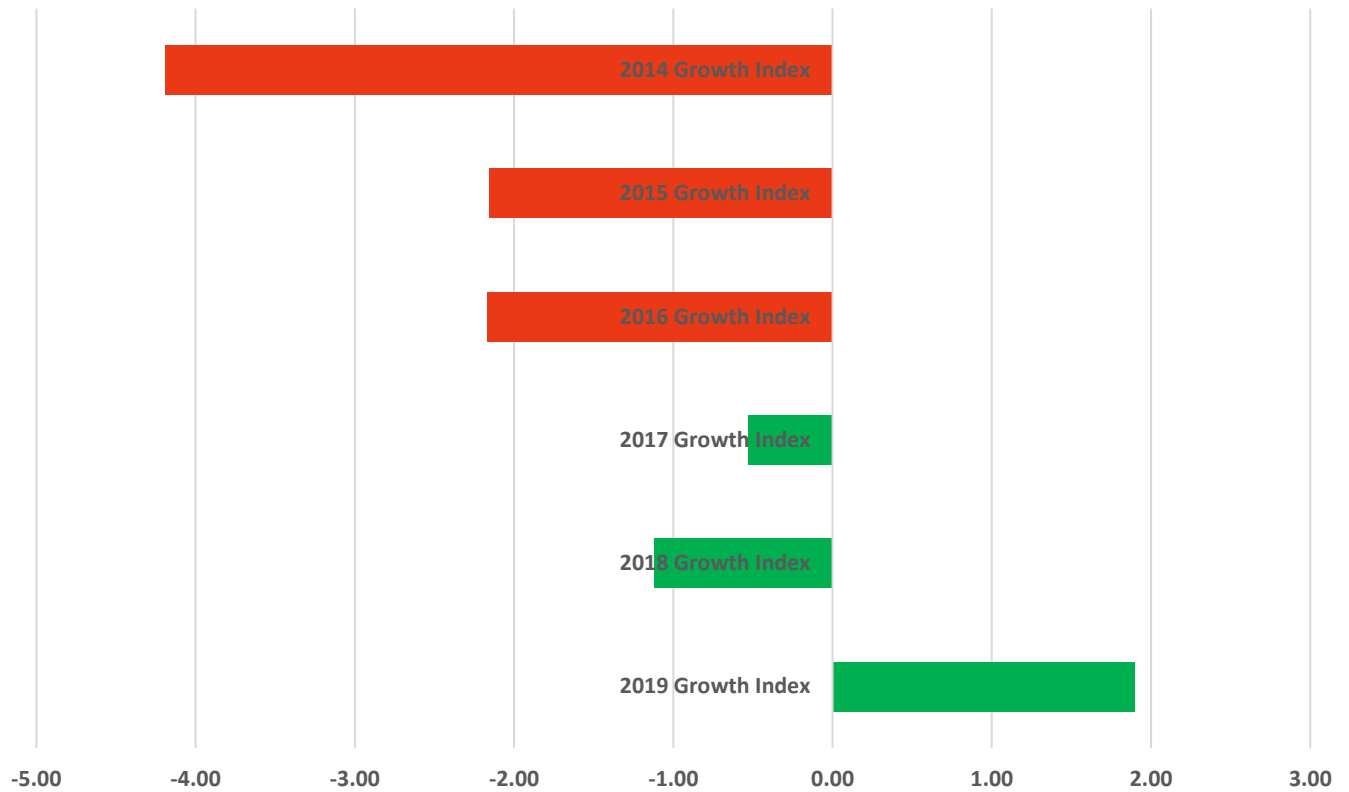
READY Accountability Model

	CCR Denominator	CCR Percent	GLP Denominator	GLP Percent
2014	696	23.7	696	32.9
2015	689	26.7	689	36.4
2016	632	21.0	632	29.1
2017	551	27.4	551	35.8
2018	566	23.7	566	35.2
2019	703	15.4	703	28.3

Growth and Participation Targets

	Growth Status	Total Targets	Targets Met	Target Percent
2014	Did Not Met Expected Growth	48	36	75.0
2015	Did Not Met Expected Growth	52	34	65.4
2016	Did Not Met Expected Growth	27	27	100.0
2017	Met Expected Growth	26	26	100.0
2018	Met Expected Growth	17	19	89.5
2019	Met Expected Growth	18	18	100.0

Eastern Randolph High Six Year Growth Index



	2019 Growth Index	2018 Growth Index	2017 Growth Index	2016 Growth Index	2015 Growth Index	2014 Growth Index
■ ERHS	1.90	-1.12	-0.53	-2.17	-2.16	-4.19

Growth Index

	School Accountability Type	Index	Level
2014	Math I, Biology, and English II	-4.19	Did Not Meet Expected Growth
2015	Math I, Biology, and English II	-2.16	Did Not Meet Expected Growth
2016	Math I, Biology, and English II	-2.17	Did Not Meet Expected Growth
2017	Math I, Biology, and English II	-0.53	Met Expected Growth
2018	NC Math I, Biology, and English II	-1.12	Met Expected Growth
2019	NC Math I, NC Math III, Biology, and English II	1.90	Met Expected Growth