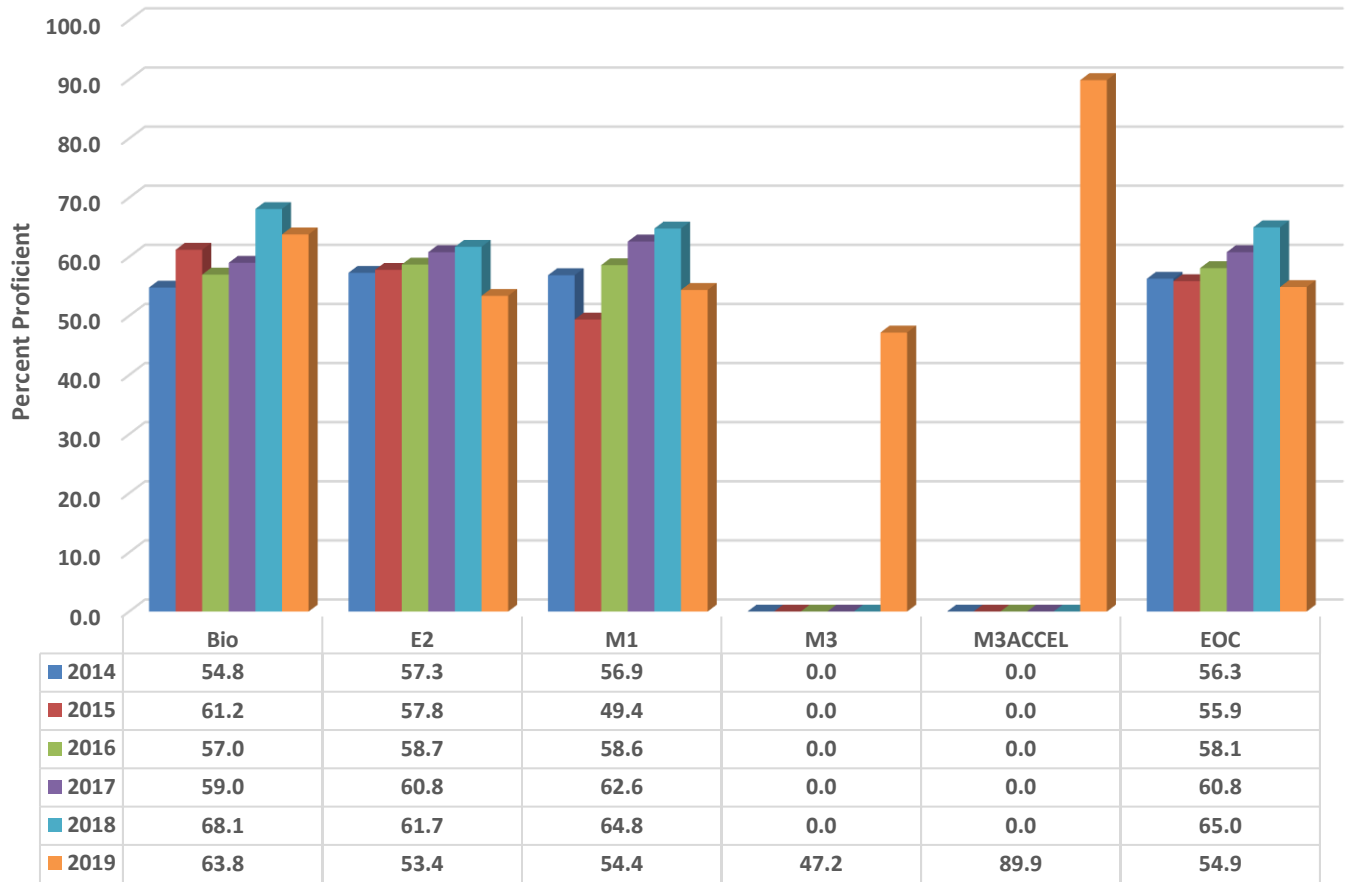


### Wheatmore High Six Year Comparison Using GLP



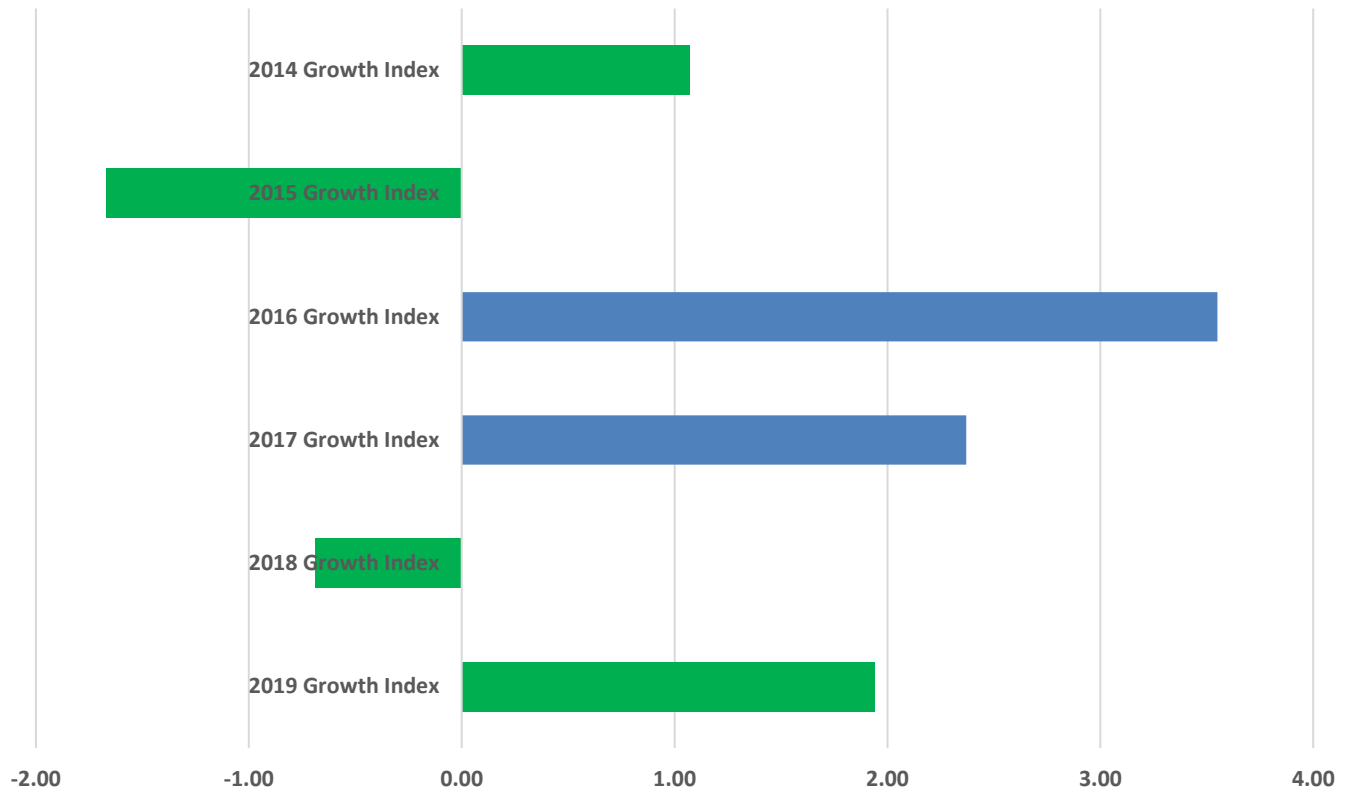
### READY Accountability Model

	CCR Denominator	CCR Percent	GLP Denominator	GLP Percent
<b>2014</b>	643	42.6	643	56.3
<b>2015</b>	644	43.8	644	55.9
<b>2016</b>	666	49.2	666	58.1
<b>2017</b>	653	49.2	653	60.8
<b>2018</b>	651	53.6	651	65.0
<b>2019</b>	773	38.0	773	54.9

### Growth and Participation Targets

	Growth Status	Total Targets	Targets Met	Target Percent
<b>2014</b>	Met Expected Growth	39	29	74.4
<b>2015</b>	Met Expected Growth	45	35	77.8
<b>2016</b>	Exceeded Expected Growth	23	23	100.0
<b>2017</b>	Exceeded Expected Growth	21	21	100.0
<b>2018</b>	Met Expected Growth	13	14	92.9
<b>2019</b>	Met Expected Growth	14	15	93.3

### Wheatmore High Six Year Growth Trend



	2019 Growth Index	2018 Growth Index	2017 Growth Index	2016 Growth Index	2015 Growth Index	2014 Growth Index
■ WHS	1.94	-0.69	2.37	3.55	-1.67	1.07

### Growth Index

	School Accountability Type	Index	Level
<b>2014</b>	Math I, Biology, and English II	1.07	Met Expected Growth
<b>2015</b>	Math I, Biology, and English II	-1.67	Met Expected Growth
<b>2016</b>	Math I, Biology, and English II	3.55	Exceeded Expected Growth
<b>2017</b>	Math I, Biology, and English II	2.37	Exceeded Expected Growth
<b>2018</b>	NC Math I, Biology, and English II	-0.69	Met Expected Growth
<b>2019</b>	NC Math I, NC Math III, Biology, and English II	1.94	Met Expected Growth